

Site Investigation Report

Auger Ref:



Job Information	
Client	Sedgwick
Client ref	[Redacted]
Visit date	15/10/2019
Report date	15/10/2019

Job Summary	
✓	1 trial hole undertaken. Read more.
✓	Requested soil samples taken. Read more.
✓	Requested root samples taken. Read more.



Job Information

Overview

Brief

Auger were commissioned by Sedgwick to undertake a site investigation within the area of concern at the property.

We first attended site and completed a deep excavation to attempt to locate the foundations to the property. We were unsuccessful in doing this due to the amount of services running through the hole and the suspected depth of the foundations.

We re attended site with 2 engineers and continued to excavate down. We then were able to locate the foundation and successfully probed the underside. Below is the trial hole log showing the foundation details for the property:

Photographs

Trial Hole 1

Fig 1.1: Trial Hole 1 Location

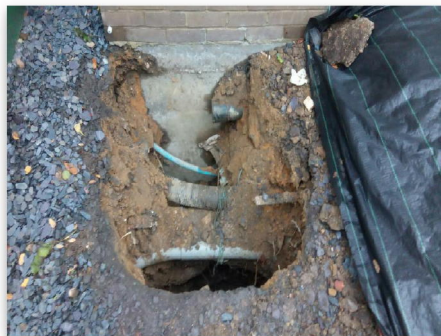


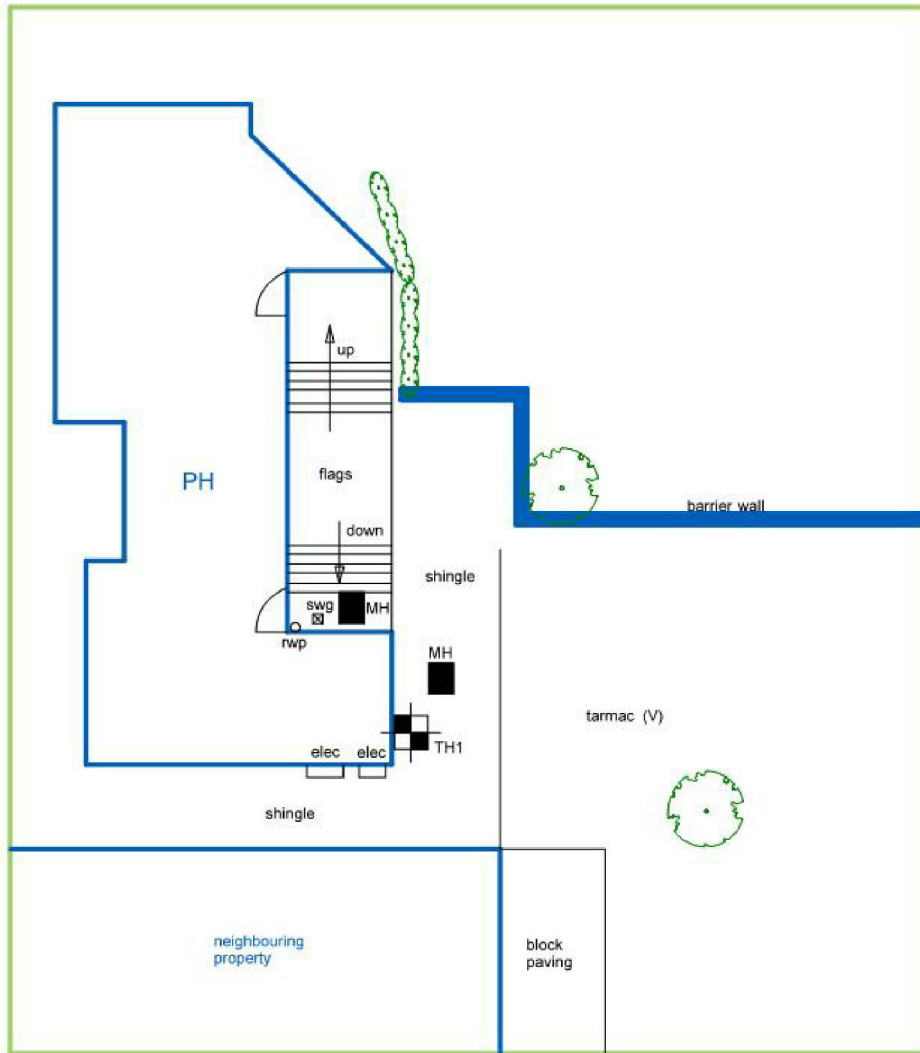
Fig 1.2: Trial Hole 1 Footing



Other Photos

Fig 7.1: Services running through hole





This drawing should be used for diagrammatic purposes only. Auger are not responsible or liable for any 3rd party works undertaken using the details outlined in this drawing. Continuation of the drainage configuration can only be confirmed by excavation or detailed technical survey.

LEGEND	
= Manhole	= Blockage
= Inspection Chamber	= svp/w/c
= Inspection Pot	= wg/fwg
= rwp	= rwp
= rwp	= Lines not camera surveyed
= Lines not camera surveyed	= Lines camera surveyed
= Lines not camera surveyed	= Assumed water mains feed
= Lines not camera surveyed	= Walls
= Lines not camera surveyed	= Fences
= Lines not camera surveyed	= Building Outline
= Lines not camera surveyed	= Steps
= Lines not camera surveyed	= Trial hole
= Lines not camera surveyed	= Borehole
= Lines not camera surveyed	= Direction of flow
= Lines not camera surveyed	= Shrubs/bush
= Lines not camera surveyed	= Hedge
= Lines not camera surveyed	= Tree



Trial Hole Log No.1

Location: Left side of front elevation

Depth (m)	Symbolic Log	Strata Description	Insitu Tests		Soil Sample	Root Sample
			SV(19)			
0.0	<p>300mm</p> <p>Ground Level</p> <p>Gravel</p> <p>Brickwork</p> <p>Concrete</p>					
1.5						
2.0		Moist Very Stiff Brown fine to medium gravelly silty CLAY	94kpa		Soil @ 1.8m	Root @ 1.8m
2.5			120kpa		Soil @ 2.3m	
3.0			120kpa		Soil @ 2.8m	
		TRIAL HOLE TERMINATED	120kpa			