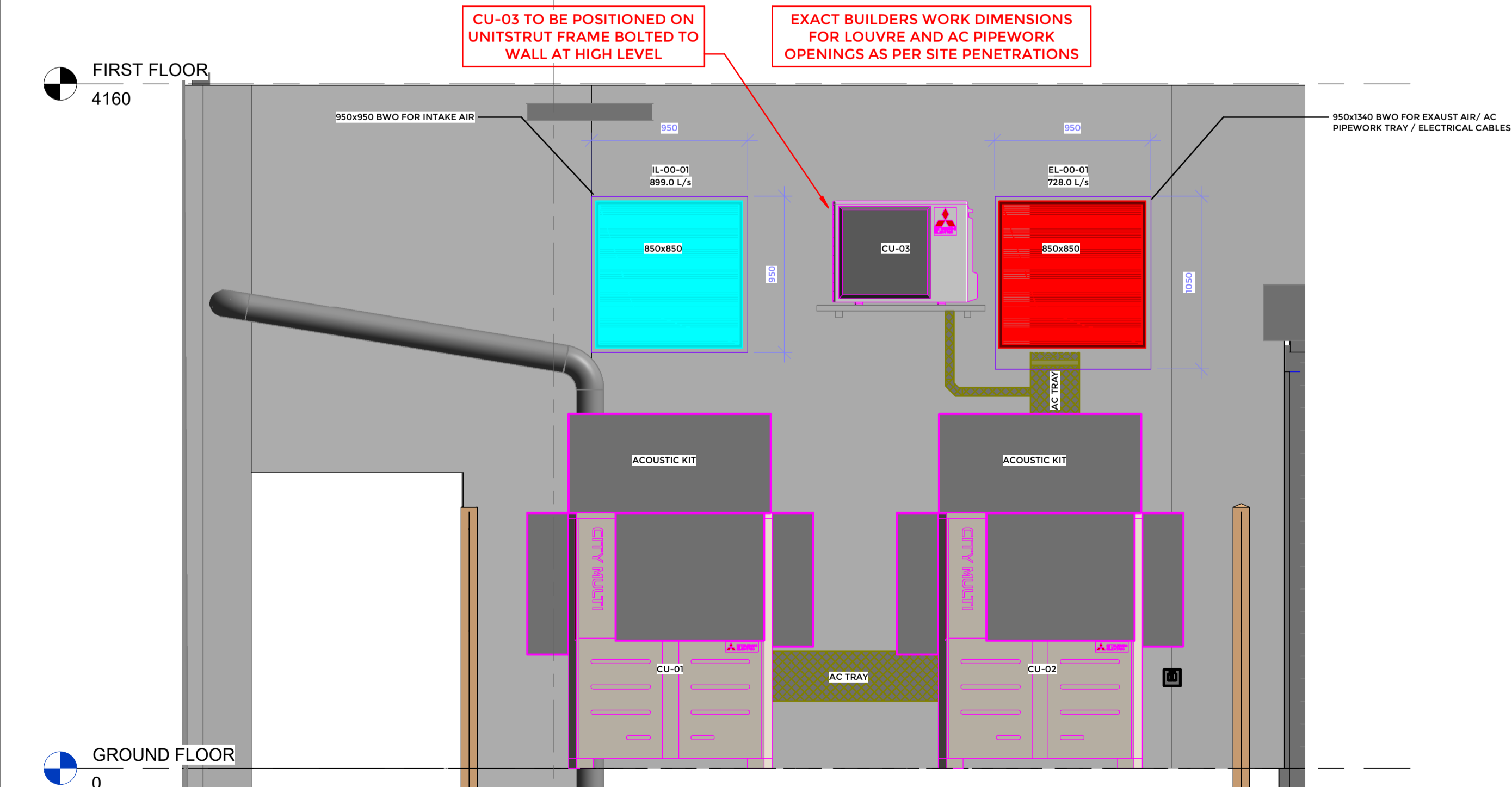


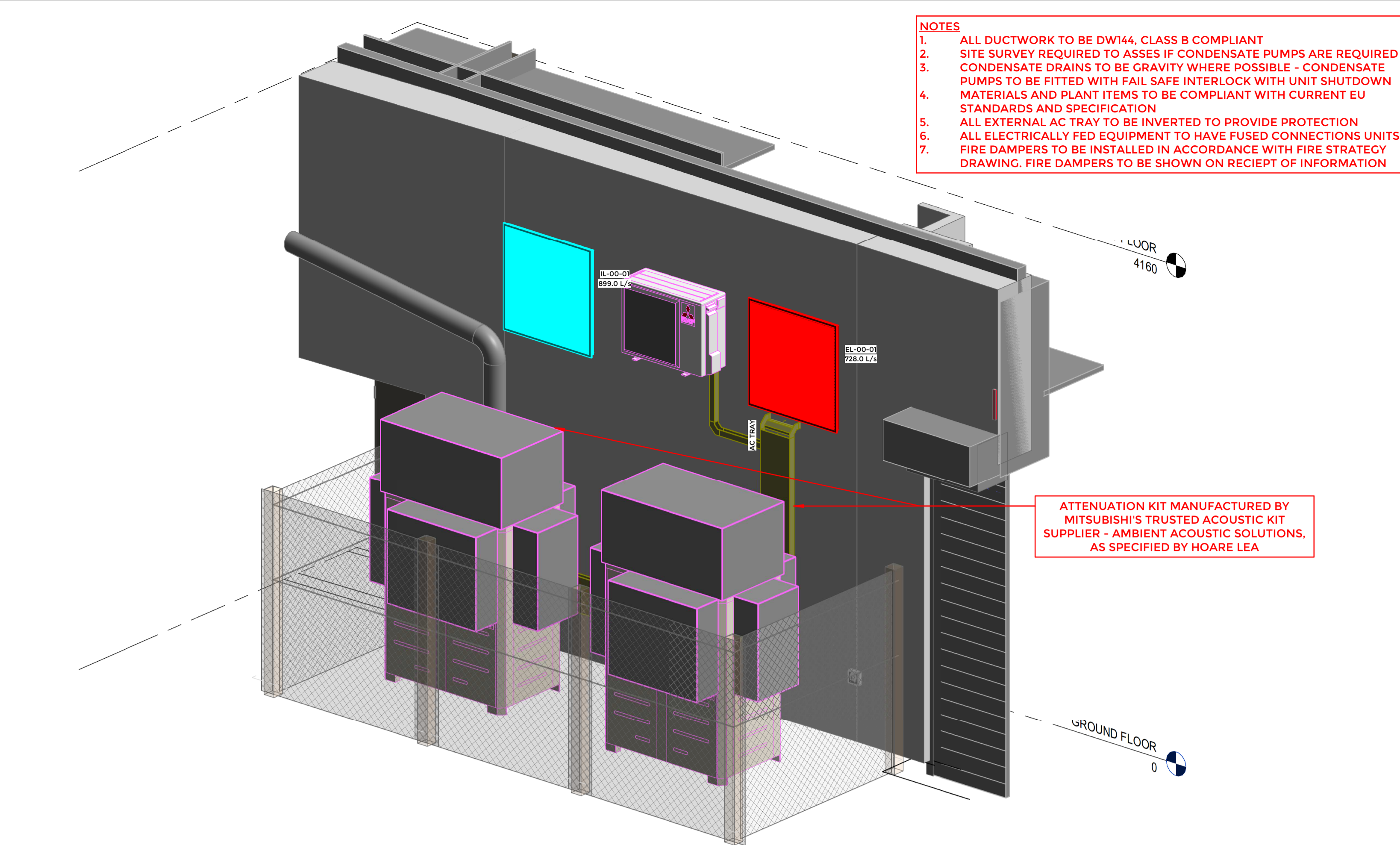
1 00_GROUND FLOOR_PLANNING_PLANT AREA
1: 50

REF.	INDOOR UNIT REF.	LOCATION	MODEL REFERENCE	VOLTAGE V/3PH/4W	POWER INPUT (KW)		STARTING CURRENT (A)	NOMINATING CURRENT H/C (A) (MAX)	FUSE HRC (A)	DIMENSIONS			WEIGHT (kg)	COP	EER	SCOP	SEER	SOUND PRESSURE	SOUND POWER	MAX PIPE		
					HEATING	COOLING				WIDTH	DEPTH	HEIGHT						LEVEL (HVC)	LEVEL (HVC)	RUN		
										(mm)	(mm)	(mm)						(dBA)	(dBA)	(m)		
CU-01 & CU-02	CU-01	EXT. PLANT AREA	PUHY-P350V5N/A	415/5/50	45	35.8	8	17.8 / 17.6 (27.6)	32	1240	740	1858	269	4.04	3.64	3.96	7.53	64.0 / 62.5	83.0 / 81.0	N/A		
	CU-02		PUZ-ZM35V6A	240/5/50	0.76	0.76	5	4.17/3.89 (A/B)	16	809	300	630	46	3.94	4.14	4	6.3	46/44	65	50		
	CU-03		AC-B1-08	EXT. PLANT AREA	PUZ-ZM35V6A	240/5/50	0.76	0.76	5	4.17/3.89 (A/B)	16	809	300	630	46	3.94	4.14	4	6.3	46/44	65	50
	CU-04		PUHY-P350V5N/A	415/5/50	45	35.8	8	17.8 / 17.6 (27.6)	32	1240	740	1858	269	4.04	3.64	3.96	7.53	64.0 / 62.5	83.0 / 81.0	N/A		
	CU-05		PUZ-ZM35V6A	240/5/50	0.76	0.76	5	4.17/3.89 (A/B)	16	809	300	630	46	3.94	4.14	4	6.3	46/44	65	50		
	CU-06		PUHY-P350V5N/A	415/5/50	45	35.8	8	17.8 / 17.6 (27.6)	32	1240	740	1858	269	4.04	3.64	3.96	7.53	64.0 / 62.5	83.0 / 81.0	N/A		
	CU-07		PUZ-ZM35V6A	240/5/50	0.76	0.76	5	4.17/3.89 (A/B)	16	809	300	630	46	3.94	4.14	4	6.3	46/44	65	50		
	CU-08		PUHY-P350V5N/A	415/5/50	45	35.8	8	17.8 / 17.6 (27.6)	32	1240	740	1858	269	4.04	3.64	3.96	7.53	64.0 / 62.5	83.0 / 81.0	N/A		
	CU-09		PUZ-ZM35V6A	240/5/50	0.76	0.76	5	4.17/3.89 (A/B)	16	809	300	630	46	3.94	4.14	4	6.3	46/44	65	50		
	CU-10		PUHY-P350V5N/A	415/5/50	45	35.8	8	17.8 / 17.6 (27.6)	32	1240	740	1858	269	4.04	3.64	3.96	7.53	64.0 / 62.5	83.0 / 81.0	N/A		

5 GROUND FLOOR VRF CONDENSER SCHEDULE
NTS



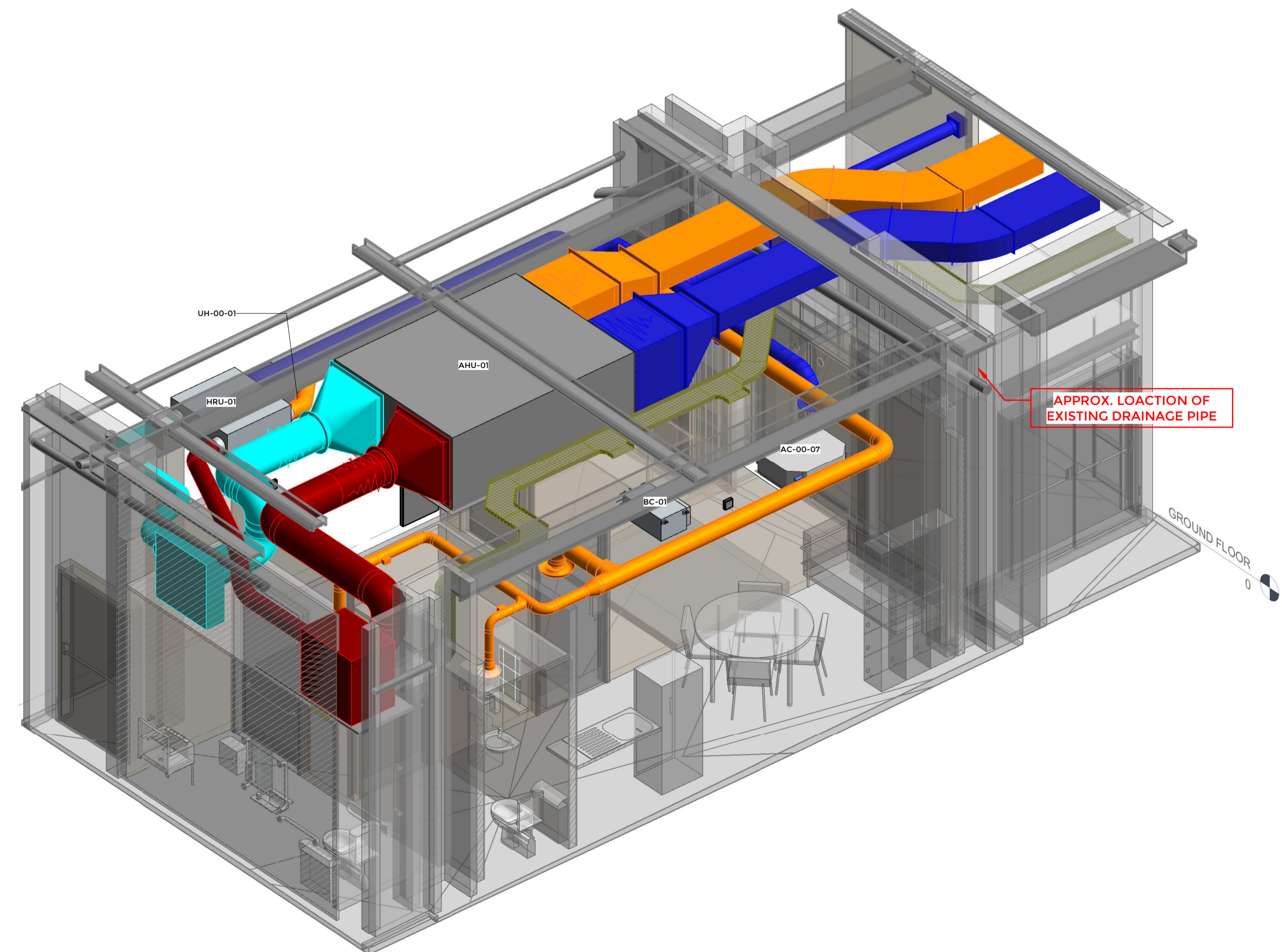
2 00_SECTION_PRJ_EAST_PLANNING_PLANT AREA
1: 25



3 00_ISOMETRIC VIEW PRJ. NORTH EAST_PLANNING_PLANT AREA

REF.	LOCATION	SYSTEM	MODEL	SERVICE TYPE	REQUIRED DUTY		CONNECTIONS				HEAT EXCHANGER	ELECTRICAL DETAILS			WIDTH (mm)	LENGTH (mm)	HEIGHT (mm)	WEIGHT (kg)
					FLOW (m³/s)	PD (Pa)	INLET (mm)	OUTLET (mm)	INLET (mm)	OUTLET (mm)		POWER (kW)	VOLTAGE (V/3PH/4W)	FLC (A)				
AHU-01	GF-03: STORAGE CEILING VOID	GROUND FLOOR SALES & BASEMENT SALES/CCTV	BESPOKE	SUPPLY EXHAUST	0.775 0.623	250	800	800	800	800	PLAT EHEAT EXCHANGER	2.5	400/3/50	3.2	2006	2596	1000	579

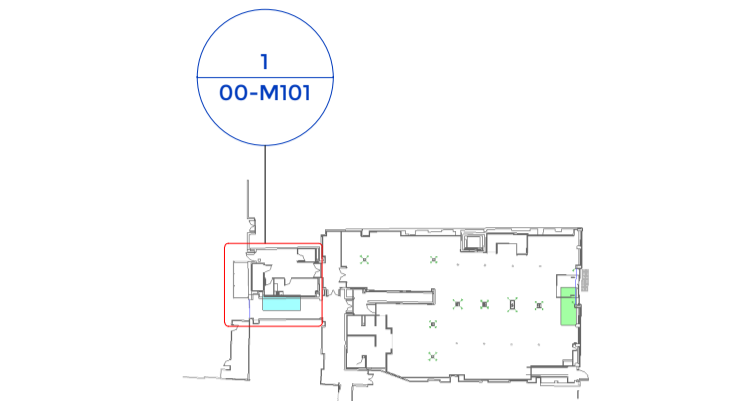
4 GROUND FLOOR AHU SCHEDULE
NTS



6 00_ISOMETRIC VIEW PRJ NORTH EAST_PLANNING_BoH AREA

- NOTES
1. ALL DUCTWORK TO BE DW144, CLASS B COMPLIANT
 2. SITE SURVEY REQUIRED TO ASSES IF CONDENSATE PUMPS ARE REQUIRED
 3. CONDENSATE DRAINS TO BE GRAVITY WHERE POSSIBLE - CONDENSATE PUMPS TO BE FITTED WITH FAIL SAFE INTERLOCK WITH UNIT SHUTDOWN MATERIALS AND PLANT ITEMS TO BE COMPLIANT WITH CURRENT EU STANDARDS AND SPECIFICATION
 4. ALL EXTERNAL AC TRAY TO BE INVERTED TO PROVIDE PROTECTION
 5. ALL ELECTRICALLY FED EQUIPMENT TO HAVE FUSED CONNECTIONS UNITS
 6. FIRE DAMPERS TO BE INSTALLED IN ACCORDANCE WITH FIRE STRATEGY DRAWING. FIRE DAMPERS TO BE SHOWN ON RECIEPT OF INFORMATION
 - 7.

- DO NOT SCALE FROM DRAWINGS - IF IN DOUBT, ASK.
- NOTES:
1. DO NOT SCALE FROM THIS DRAWING
 2. ALL DIMENSIONS ARE IN MILLIMETRES UNLESS OTHERWISE STATED
 3. THE DRAWING IS TO BE READ IN CONJUNCTION WITH ALL OTHER DRAWINGS AND SPECIFICATIONS
 4. ANY DISCREPANCY IS TO BE REFERRED TO THE ENGINEER
 5. THIS INSTALLATION IS TO BE CO-ORDINATED WITH ALL OTHER TRADES
 6. ALL DIMENSIONS TO BE CHECKED AND VERIFIED ON SITE PRIOR TO COMMENCEMENT OF THE WORKS
 7. ALL TRADES ARE TO INSTALL AS PER CO-ORDINATED SECTION DIMENSIONS
 8. IF ADDITIONAL INFORMATION IS REQUIRED REFERER TO THE ENGINEER
 9. ALL VOLUME CONTROL DAMPERS ON DUCTWORK IN CEILING VOIDS SHALL BE ACCESSIBLE
 10. ACCESS POINTS THROUGH CEILING TO SERVICES ABOVE SHALL BE KEPT TO A MINIMUM BY THE CAREFUL COORDINATION BY THE CONTRACTOR OF THE SERVICES THAT REQUIRE ACCESS VIA THE ACCESS HATCHES
 11. FIRE DAMPERS/COLLARS TO BE INSTALLED IN ALL AREAS WHERE ANY SERVICE PENETRATES FLOOR SLABS OR FIRE WALLS
 12. WHERE FC IS SHOWN, ALL PIPEWORK THROUGH WALL REQUIRES A FIRE COLLAR



- HVAC LEGEND
- SUPPLY DUCTWORK
 - INTAKE DUCTWORK
 - RETURN DUCTWORK
 - EXTRACT DUCTWORK
 - FLUE DUCTWORK
 - AC DUCTWORK/EQUIPMENT
 - AC RETURN DUCTWORK
 - AC TRAY
 - AC - AIR CONDITIONING
 - ACC - AIR CONDITIONING CONTROLLER
 - AHU - AIR HANDLING UNIT
 - ATT - ATTENUATOR
 - BDD - BACK DRAFT DAMPER
 - BC - BELOW GROUND
 - BM - BELLMOUTH
 - CAV - CONSTANT AIR VALVE
 - CU - CONDENSER UNIT
 - DCCL - DUCT CENTRE LINE
 - DJ - DRUMJET DIFFUSER
 - EF - EXTRACT FAN
 - EG - EXTRACT GRILLE
 - EQ - EQUAL (TAPER)
 - ESP - ELECTROSTATIC PRECIPITATION FILTER
 - FB - FLAT BOTTOM (TAPER)
 - FD - FIRE DAMPER
 - FIL - FILTER
 - FS - FLAT SIDE (TAPER)
 - FSC - FAN SPEED CONTROLLER
 - HLC - HIGH LEVEL
 - HRU - HEAT RECOVERY UNIT
 - ILO - INTERNAL LOUVER
 - KC - KITCHEN CANOPY
 - LL - LOW LEVEL
 - SF - SUPPLY FAN
 - SC - SUPPLY GRILLE
 - TYP - TYPICAL
 - UDC - DOOR TO BE UNDERCUT BY CONTRACTOR
 - UVO - ULTRAVIOLET FILTER
 - VCD - VOLUME CONTROL DAMPER
 - SPOT HEIGHT FROM BOTTOM OF DUCT TO FFL
 - FUSED SPUR

- BUILDERS WORK LEGEND
- BUILDERS WORK PENETRATION
 - CONSTRUCTION DIMENSIONS
 - BWO - BUILDERS WORK OPENING ABOVE SLAB LEVEL TO BOTTOM OF OPENING
 - ASL - ABOVE SLAB LEVEL TO BOTTOM OF OPENING

7	CONDENSERS SPLIT FOR ATTENUATION	25/11/20	SF	--
6	COORDINATED WITH ELECTRICAL	20/11/20	SF	--
5	SERVICES ADJUSTED TO STRUCTURAL MODEL	11/11/20	SF	--
4	NEW MURPHY MODEL INCLUDED	14/10/20	SF	--
3	NEW ARCH. MODEL LINKED	08/09/20	SF	--
2	BWO'S CHECKED AND ADJUSTED	26/08/20	SF	NB
1	HOARE LEA COMMENTS ACTIONED	19/03/20	SF	--
Rev	Description	Date	Rev By	Checked By
STATUS				

FOR APPROVAL			
CLIENT	TJX		
PROJECT	TKMaxx Camden		
TITLE	MECHANICAL SERVICES PLANT AREA LAYOUT GROUND FLOOR		

Scale	As indicated @ A1	Drawn by	SS
1 st Issue Date	09/03/20	Checked by	SF
Company Address:	Drawings Produced By:	Project Address:	
Roall Hall Roall Lane Eggborough North Yorkshire DN14 0NY	HENSALL MECHANICAL SERVICES LTD. www.hensall.com Tel : 01977 661318 Fax: 01977 662127	128 Camden High St. Camden Town, London, NW1 0LU	

HENSALL