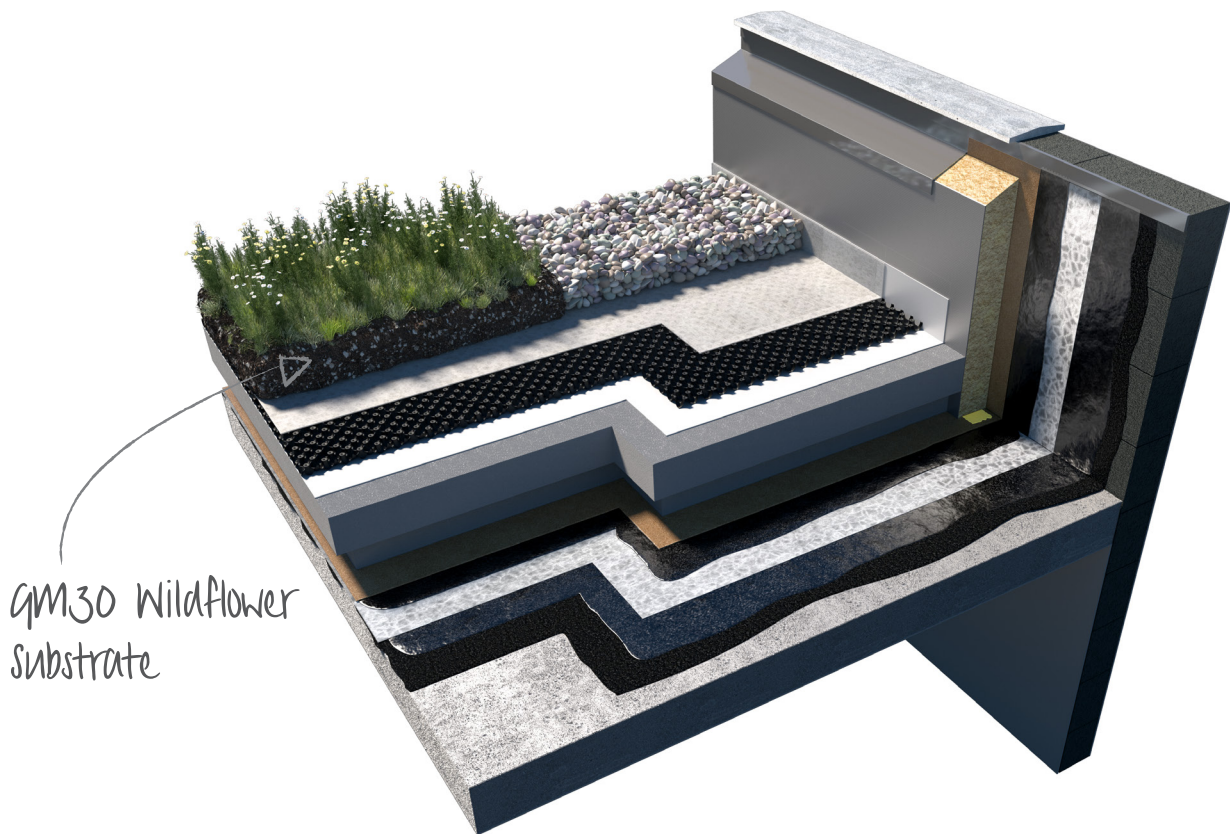


GM30 Wildflower Substrate

Product Data Sheet



GM30

Wildflower Substrate

General Information

Radmat GM30 Wildflower Substrate suitable growing medium for a self-sustaining plant community consisting of cast wildflower seed, pre-grown wildflower plug plants and or wildflower blankets. Consisting of a blend of water retaining aggregates, crushed brick and organic material, all composted material is from sustainable sources and the crushed brick element is a by-product or a second from the brick manufacturing industry and contains no demolition waste. Compliant with GRO substrate guidelines.

Application areas

Green roofs consisting of wildflower seed mix, mixed pre-grown wildflower and sedum plugs, pre-grown wildflower and sedum blanket, and Biodiverse green roofs and 'Brown' roofs. Install GM30 Wildflower Substrate on either Radmat D25 or D40 drainage/reservoir board covered with G11 filter fleece in accordance with the Radmat specification.

Installation instructions

Apply to a depth as specified according to plant type allowing 10% post installation settlement. Indicative substrate depths are given in the table below, however the specified depth will vary based on a variety of factors including design load, building location, building height, plant species etc. It is therefore important to consult the project specification.

PLANTING METHOD	ROOF TYPE	POST SETTLEMENT SUBSTRATE DEPTH
Wildflower seed mix	Inverted Roof	120mm
Wildflower seed mix	Warm Roof	120mm
Pre-grown wildflower & sedum plugs	Inverted Roof	120mm
Pre-grown wildflower & sedum blanket	Inverted Roof	120mm
Pre-grown wildflower & sedum plugs	Warm Roof	120mm
Pre-grown wildflower & sedum blanket	Warm Roof	120mm



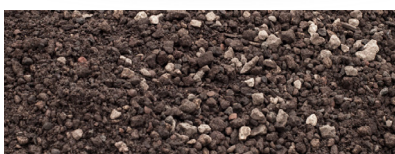
Delivery conditions

Delivery Form

1.25m³ Bulk Bags
25 litre Sacks.

Storage and transport

Delivered on a pallet.
Store flat.



GM30

Wildflower Substrate

TECHNICAL FEATURES

Essential Characteristics	Composition	Performance	Unit
Bulk Density	Dry Weight by max water capacity	800 - 900 1125	kg/m ³ kg/m ³
Grain size	Mixed	10.0	mm
Ph/Salinity	Ph value Salinity (water extract) Salinity (gypsum extract)	7.8 1.97 1.28	g/l g/l g/l

This information given in good faith and is based on the latest knowledge available to Radmat Building products Ltd. Whilst every effort has been made to ensure that the contents of the publication are current while going to press, customers are advised that products, techniques and codes of practice are under constant review and liable to change without notice.

For further information on Radmat products and services please call **01858 410372**, email techenquiries@radmat.com or visit our website www.radmat.com **MAY 2019**



Radmat Building Products Ltd Holland House, Valley Way, Rockingham Road, Market Harborough, Leicestershire, LE16 7PS T : 01858 410 372 E : techenquiries@radmat.com