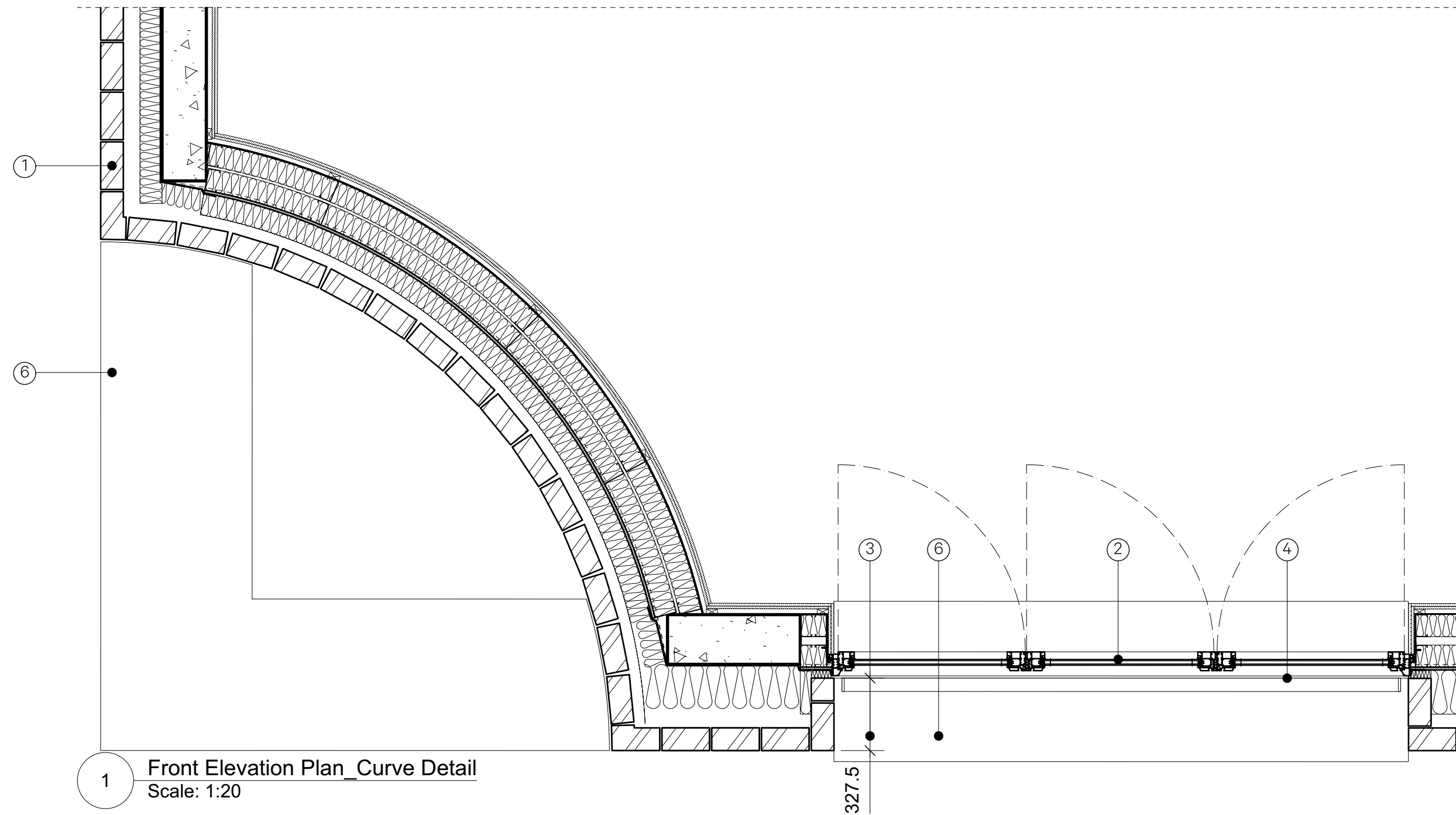
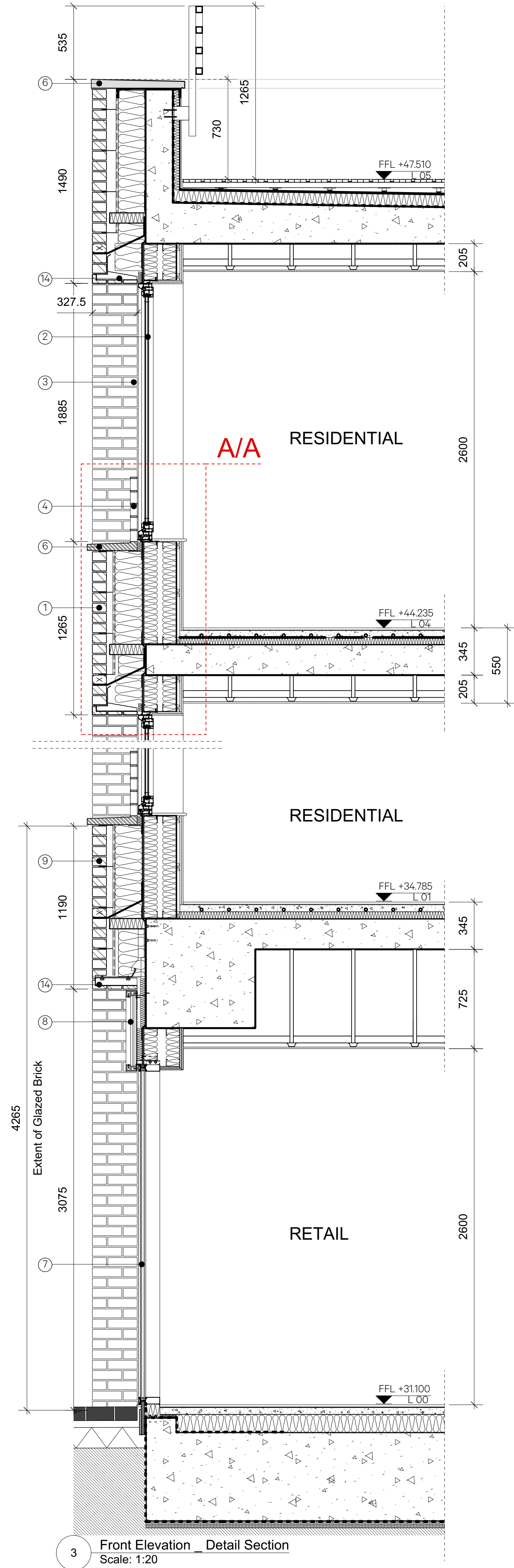


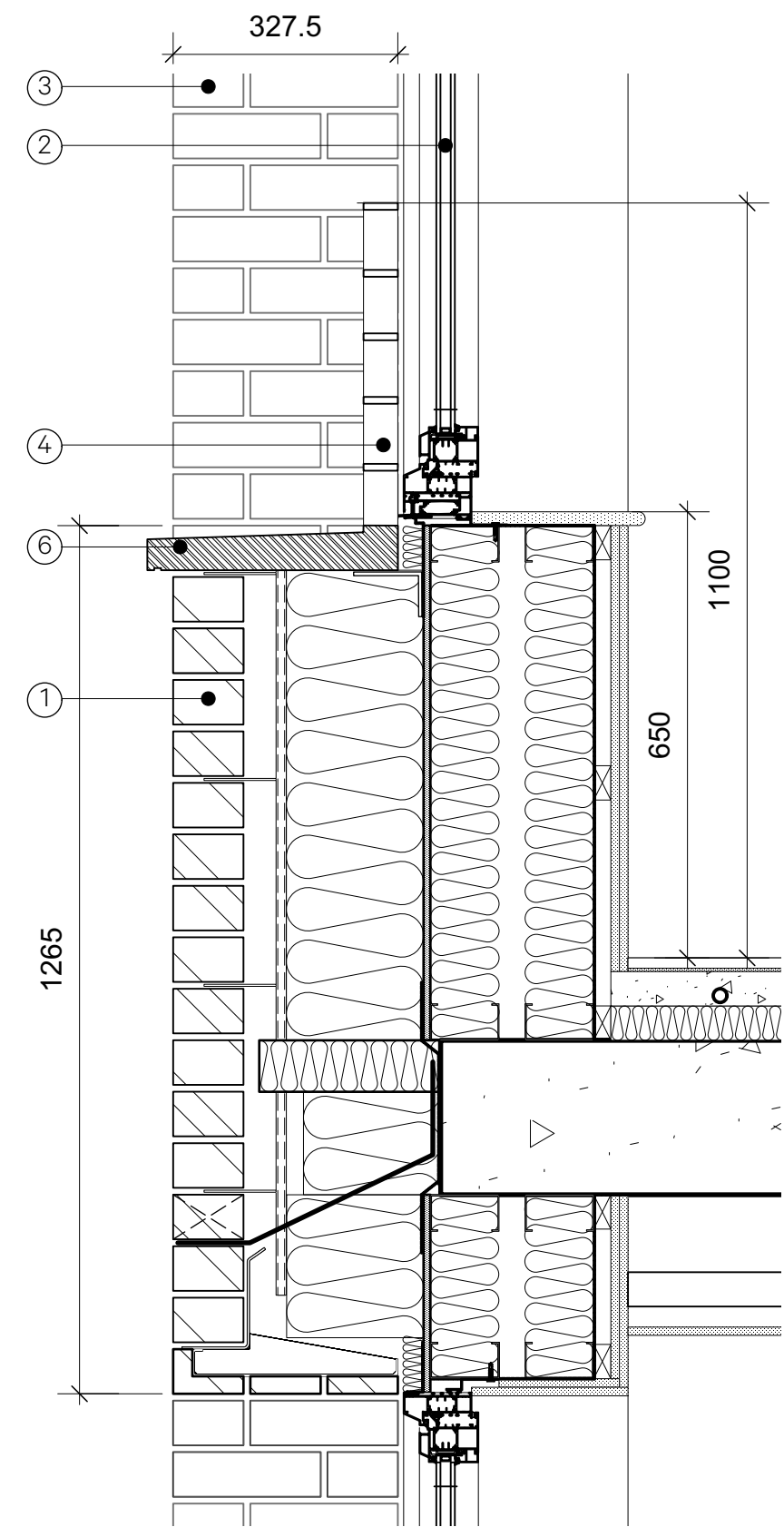
2 Front Elevation\_Bay Detail  
Scale: 1:20



1 Front Elevation Plan\_Curve Detail  
Scale: 1:20



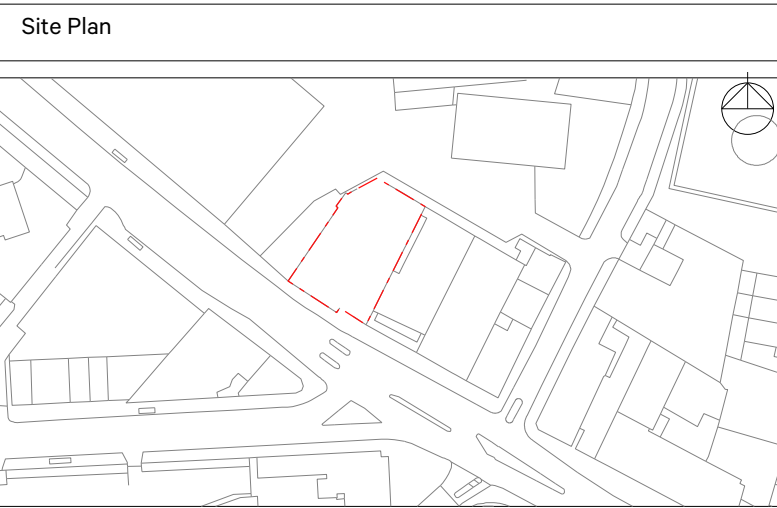
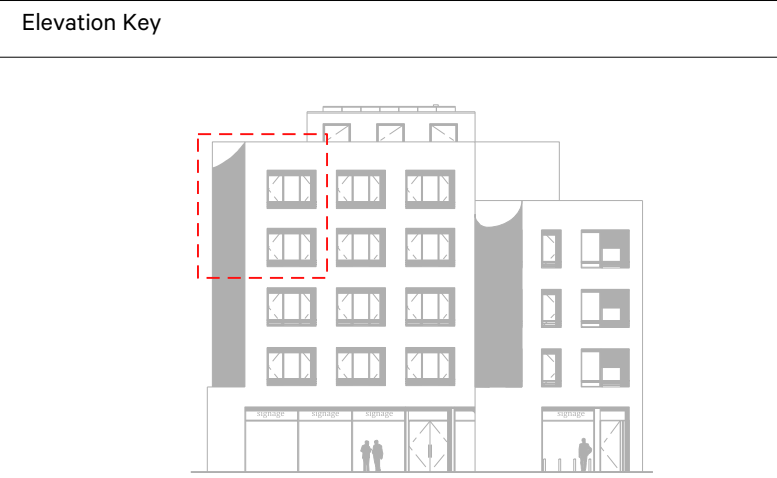
3 Front Elevation\_Detail Section  
Scale: 1:20



4 Detail AA  
Scale: 1:10

Revision	Date	Amendment
-	09.04.20	Preliminary Issue
A	06.07.20	Aluminium soffit panel updated
B	13.11.20	Planner's comments incorporated

- Key
- 1 KARAMA WHITE HANDMADE BRICK
  - 2 REYNAERS SLIMLINE 38 WINDOW SYSTEM (POWDER COATED FINISH - RAL 8028)
  - 3 DEEP BRICKWORK REVEALS (327.5mm - 225mm)
  - 4 METAL BALUSTRADE (POWDER COATED FINISH - RAL 8028)
  - 5 ZINC FLAT LOCK DIAMOND NARROW CLADDING (FINISH - PIGMENTO BROWN)
  - 6 RECONSTITUTED STONE CILL (COLOUR MATCHED WITH BRICKWORK)
  - 7 REYNAERS CW50 - CURTAIN WALLING SYSTEM (POWDER COATED FINISH - RAL 8028)
  - 8 SIGNAGE ZONE (POWDER COATED FINISH - RAL 8028)
  - 9 PIRINEO WHITE GLAZED BRICK TO LOWER LEVEL
  - 10 STEEL LINTEL (POWDER COATED FINISH TO MATCH BRICKWORK)
  - 11 REYNAERS CP-155 - SLIDING DOOR SYSTEM (POWDER COATED FINISH - RAL 8028)
  - 12 REYNAERS MASTERLINE - WINDOW & DOOR SYSTEM (POWDER COATED FINISH - RAL 8028)
  - 13 HIT AND MISS BRICKWORK
  - 14 STEEL LINTEL WITH UNDERHUNG BRICK SLIPS



Notes

NO DIMENSIONS ARE TO BE SCALED FROM THIS DRAWING. THE CONTRACTOR/MANUFACTURER IS RESPONSIBLE FOR CHECKING ALL DIMENSIONS AND CLIPPING ANY DISCREPANCIES. THIS DRAWING IS THE PROPERTY OF BURWELL ARCHITECTS LTD. COPYRIGHT IS RESERVED BY THEM AND THE DRAWING IS ISSUED ON CONDITION THAT IT IS NOT COPIED, REPRODUCED, RETAINED OR DISCLOSED TO ANY UNAUTHORISED PERSON, EITHER WHOLLY OR IN PART, WITHOUT WRITTEN CONSENT.

Client	Vabel Limited
Project	Haverstock Hill
Drawing	Front Elevation Bay Detail
Scale	1:20 @ A1 & 1:40 @ A3
Date	April 2020
Drawn	SM

Project N°	Drawing N°	Revision
864	13582-AP-LXX-21-300	B

Burwell Architects

info@burwellarchitects.com  
www.burwellarchitects.com

Unit: 0.01  
California Building  
London SE13 7SF  
+44 (0) 2083 066010