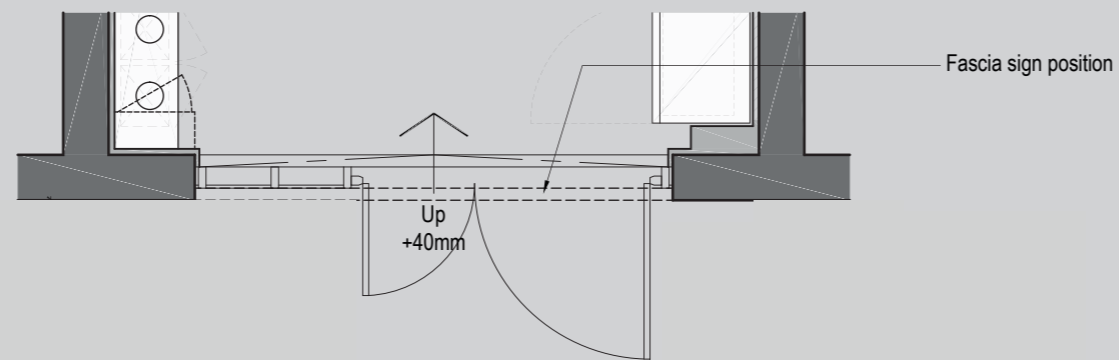
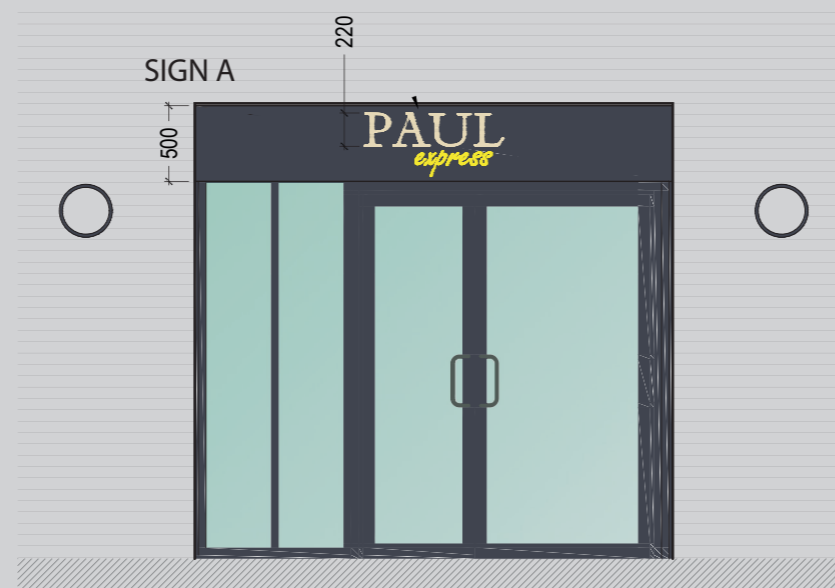


PAUL
Unit 4 West Hampstead Square, NW6 2BR. REV A





Proposed Shopfront Plan



Proposed Shopfront Elevation

REV A

SIGN A

Fascia - 3100mm x 500mm high folded 2mm aluminium panels coated to RAL reference 9005 satin. 80mm returns complete with top and bottom fixing rails. Main text 220mm shouder cut and push through 15mm opal acrylic with ivory cream vinyl translucent face. Sub text fret cut and backed up with 3mm yellow 229 acrylic 'express' detail.



1:10 @ A3

