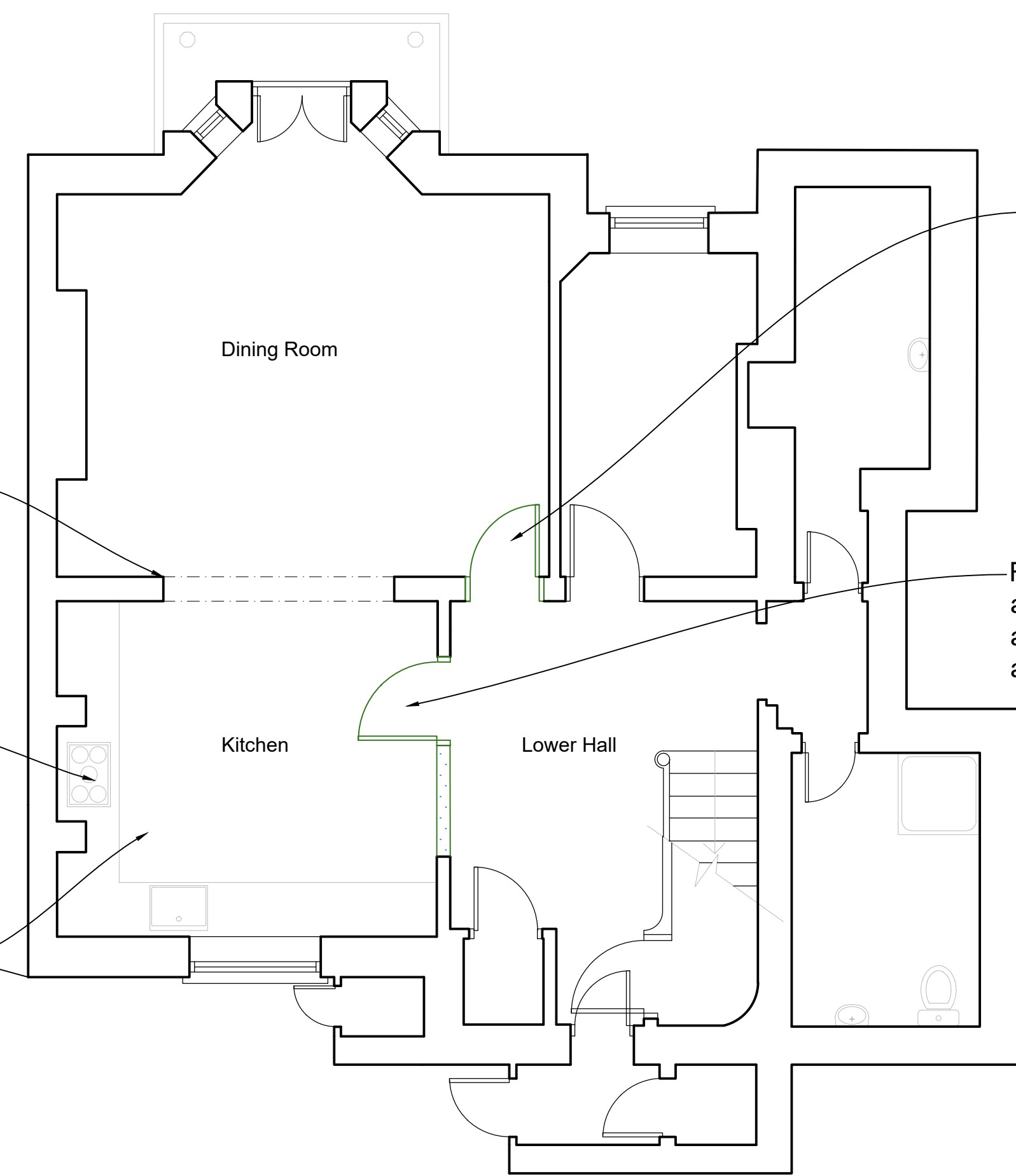


Remove cupboard joinery, which was installed as part of previously unconsented work

The proposals seek to regularise the previous removal of the modern folding doors and retain the opening as extant with nibs and downstand

The proposals seek to regularise the previous installation of an oven and hob in the chimneybreast

The proposals seek to regularise the current kitchen layout, which replaced modern fixtures and fittings



Reinstate single doorway. Door and architrave to match adjacent doors

Reinstate single doorway and partition. Door and architraves to match adjacent doors

#### GENERAL NOTES

- Based on survey data received from client.
- Modern glazed doors have been replaced with painted panelled doors generally.

#### GENERAL NOTES

- Read all drawings in conjunction with associated specification, schedules and drawings.
- Read all the notes on this drawing.
- Based on survey information by others.

#### HATCH KEY

Document to be printed/read in colour only.

Fabric implemented as part of unconsented works, which this application seeks to regularise

Fabric implemented as part of unconsented works, which this application seeks to remove

New fabric proposed as part of corrective and regularisation work

Existing Fabric

Assumed line of existing structure

#### Notes

- Any dwg format drawing is to be read in conjunction with and at the scale of the accompanying pdf.
- Where colours other than black or grey are used, the drawing must be plotted in colour.
- For status 'C' (Construction) drawings all dimensions are to be checked on site by the contractor, scaling is for Local Authority purposes only.
- Unless otherwise indicated, all dimensions are in millimeters.
- All information on this drawing is to be read in conjunction with the relevant Donald Insall Associates specification and trade contractors' drawings and information by specialists.
- In the event of any discrepancy, please contact us immediately.
- This drawing may contain survey information by others and is to be used solely for the purposes for which it was issued.
- These are uncontrolled documents issued for information purposes only. If you have any queries regarding the drawings, please contact DIA immediately.
- Please note DIA cannot be held responsible for any errors arising from changes made to an uncontrolled dwg file.

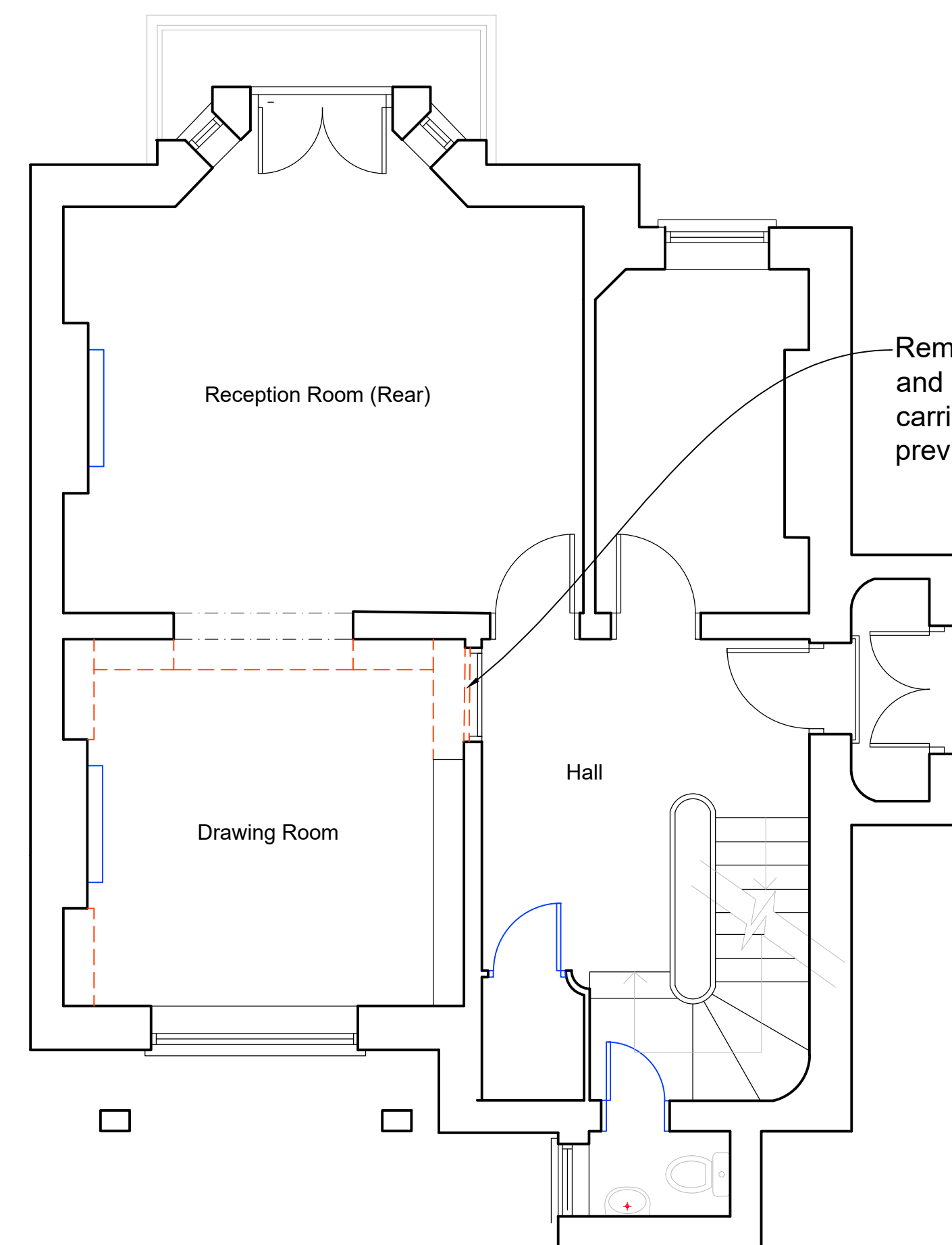
© 2017 DONALD INSALL ASSOCIATES LTD

#### Drawing Status

F	Feasibility	B	Building Control	T	Tender
S	Sketch Design	D	Developed Design	C	Construction
P	Planning	M	Measurement	R	Record

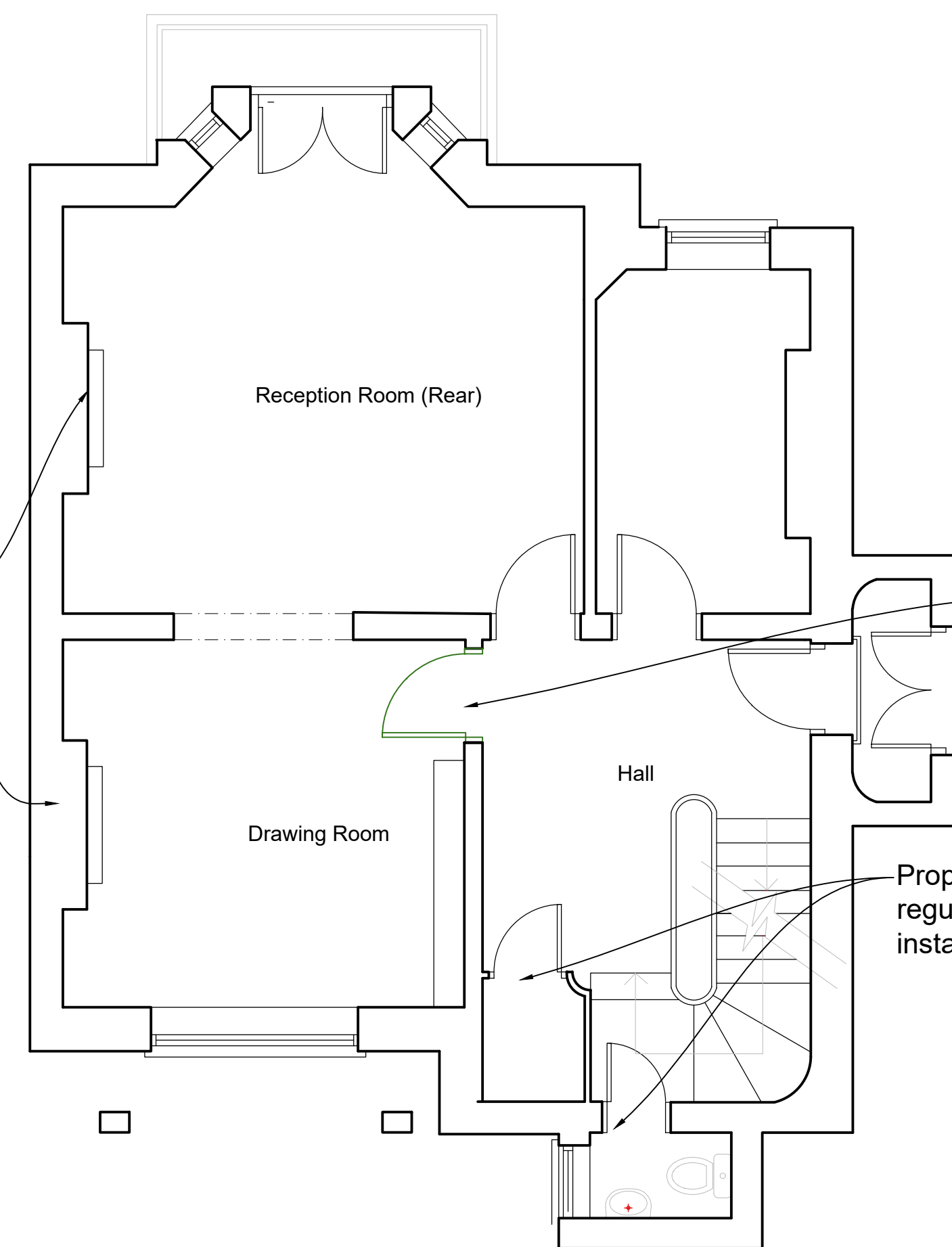
01 Lower Ground - Existing Plan and Proposed Removal of Unconsented Work  
2000 1:50 @ A1

02 Lower Ground - Proposed Regularisation and Corrective Work  
2000 1:50 @ A1



Remove section of bookcase and unblock door, which was carried out as part of previously unconsented work

The proposals seek to regularise the previous removal of chimney pieces and the installation of new chimney pieces

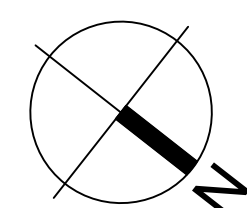


Reinstate working doorway, retaining and repairing existing door and architrave

Proposals seek to retain and regularise the previous installation of paneled doors

03 Ground Floor - Existing Plan and Proposed Removal of Unconsented Work  
2000 1:50 @ A1

04 Ground Floor - Proposed Regularisation and Corrective Work  
2000 1:50 @ A1



0 0.5 1 2.5  
Scale 1:50 m

26 Park Village East  
London

Lower Ground & Ground Floor Plans

Project	PVE26.02	No	2000
Scale (A1)	1:50	Status	3P
		Revision	01

**Donald Insall Associates**  
Chartered Architects and Historic Building Consultants

12 Devonshire Street, London W1G 7AB  
(+44) 020 7245 9888  
london@insall-architects.co.uk