

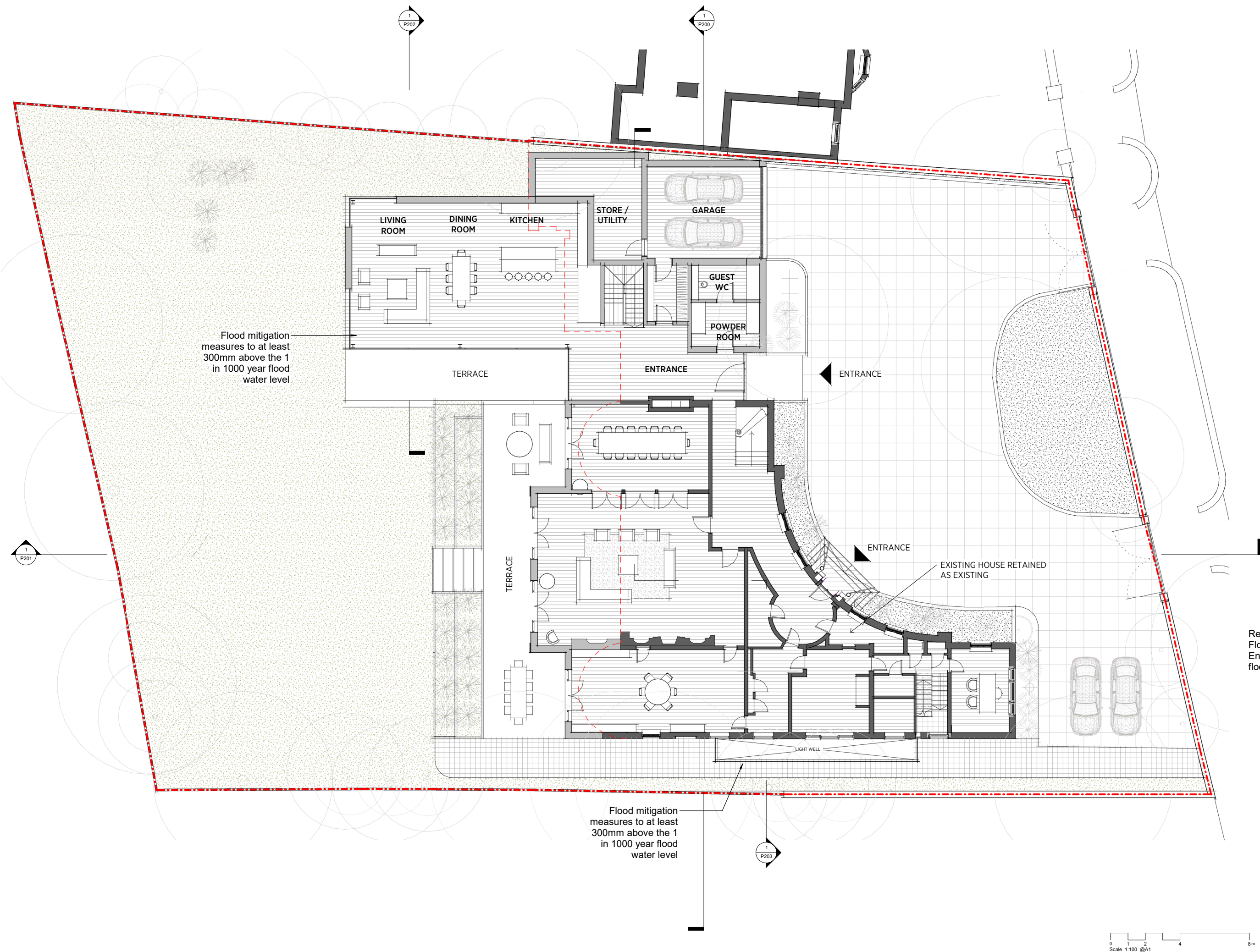
General Notes

This drawing is copyright of KSR architects. This drawing must be read in conjunction with the Designer's Risk Assessment, specification and all other relevant documentation and drawings.

KSR architects accept no liability for any expense, loss or damage of whatever nature and however arising from any variation made to this drawing or in the execution of the work to which it relates which has not been referred to them and their approval obtained.

Areas are based on un-checked survey and are approximate only. Do not scale from this drawing or the digital data, only figured dimensions are to be used. Refer to linear scale for guidance.

Check all dimensions on site prior to carrying out any works and advise any discrepancy.



Reference should be made to the Flood Risk Assessment by Water Environment for more information on flood water levels

Rev	Description	Date	By
A	FRA notes added	30/11/20	DC

Status:

Planning

Key Plan:



KSR ARCHITECTS & INTERIOR DESIGNERS
KSR Architects LLP
14 Grendon Street
London NW1 0NP
t: +44 (0)20 7692 5000
www.ksrarchitects.com

Project:

69 Avenue Road

Drawing Title:

Ground Floor Plan

Date of first issue: 31/01/20

Scale: 1:100 @A1 / 1:200 @A3

Drawn By: MF

Checked By: DC

© KSR Architects

Drawing No: 18030-P100

Rev: A