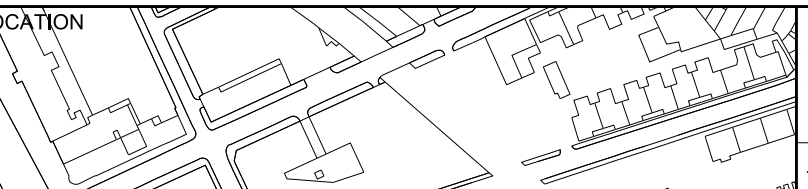
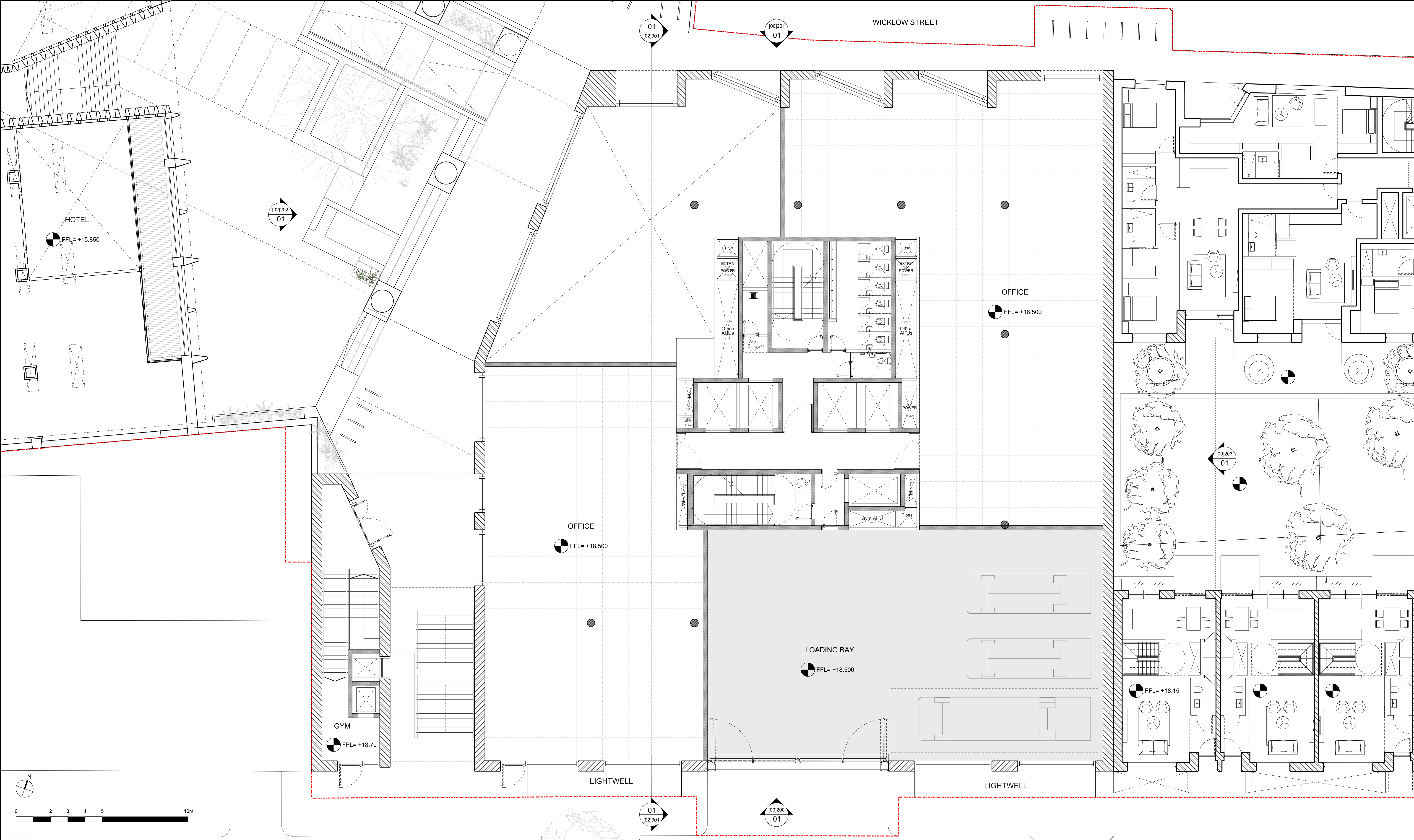
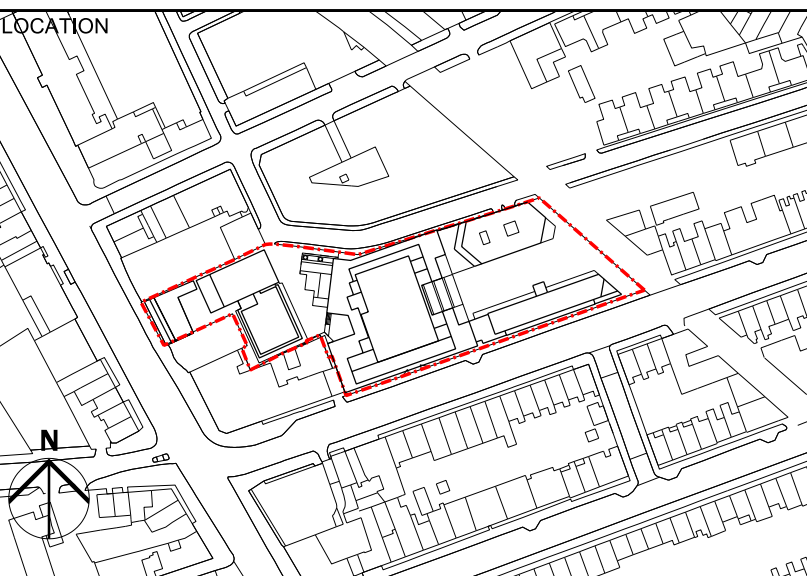


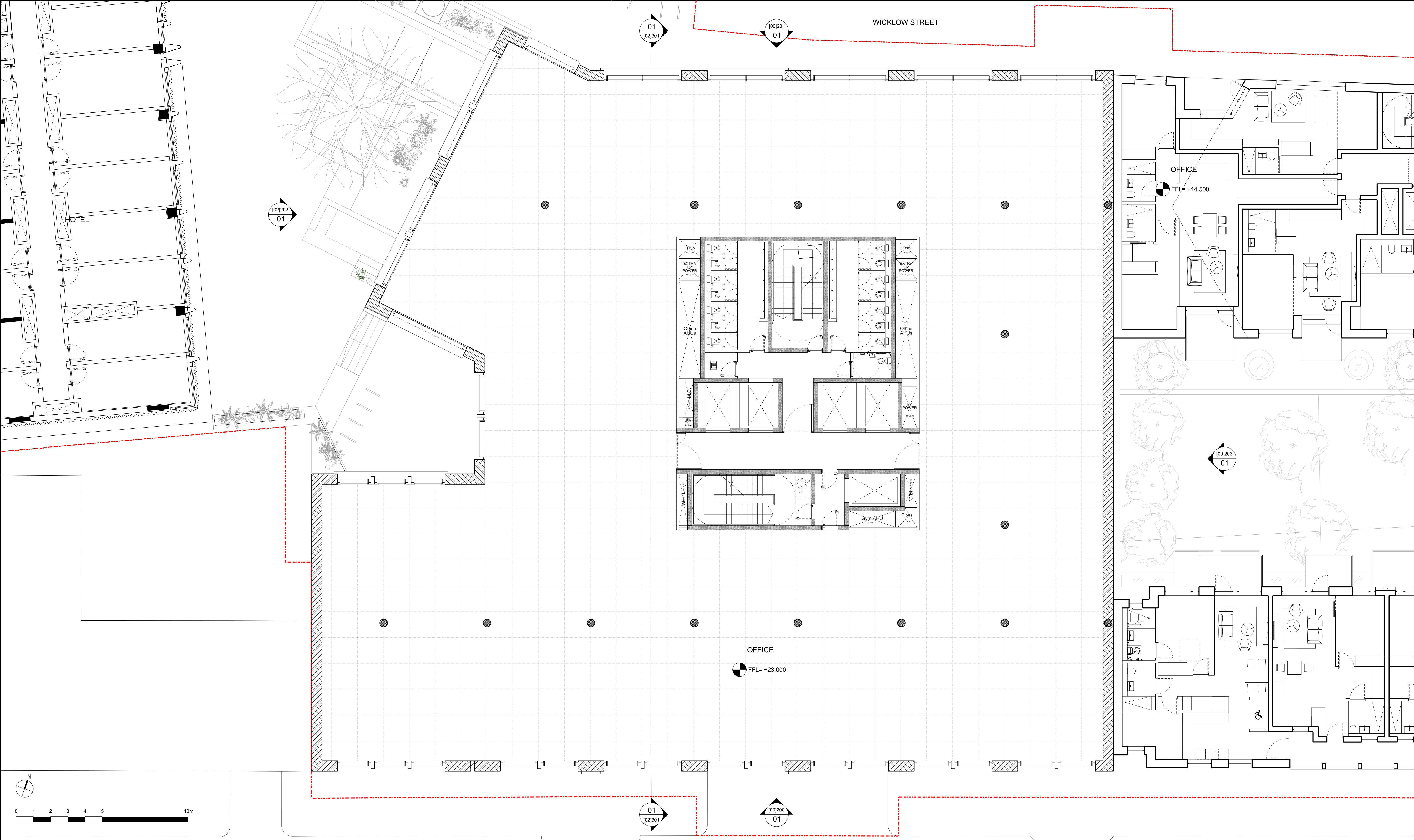
01 GENERAL ARRANGEMENT: LOWER GROUND FLOOR PLAN (WICKLOW ST)

KEY	REV		DATE		CONSULTANTS		NAME		NOTE		LOCATION		ALLFORD HALL MONAGHAN MORRIS			
	P01		30/11/20		ISSUED FOR PLANNING		CLIENT:		GROVEWORLD				ARCHITECTS Ltd MORELANDS, 5-23 OLD STREET LONDON EC1V 9HL TEL 020 7251 5261 FAX 020 7251 5123 WEB WWW.AHMM.CO.UK			
					STRUCTURAL ENGINEER:		WSP									
					MECHANICAL ENGINEER:		XC02									
					COST CONSULTANT:		TURNER TOWNSEND									
					ACOUSTIC CONSULTANT:		HANN TUCKER									
					TRANSPORT CONSULTANT:		STEER									
					DAYLIGHT / SUNLIGHT :		POINT2									
									Allford Hall Monaghan Morris Limited accepts no responsibility or liability for:- - any use of this drawing by parties other than the party for whom it was prepared or for purposes other than those for which it was prepared - any alterations or additions to or discrepancies arising out of changes to the background information on which the drawings are based that was current at the time of issue, and which occur to that information after it has been issued by AHMM - any loss or degradation of the information held in this drawing resulting from the translation from the original file format to any other file format or from the recipients reading of it in any other programme or any version of the programme other than that which was used to prepare it - the accuracy of survey information provided by others or for any costs, claims, proceedings and expenses arising out of reliance on such information - any scaling from this drawing other than by the local planning authority solely for the purposes of the planning application to which it relates							
										job title		330 GRAYS INN ROAD				
										drawing title / location		PROPOSED OFFICE FLOOR PLANS LOWER GROUND FLOOR PLAN (WICKLOW ST)				
										drawn by		GS				
										checked		MH				
										scale		1:100@A1; 1:200@A3				
										status		PLANNING				
										project		18116				
										zone		02				
										source		A				
										classification		(00)_P100				
										drawing no.		P01				
										revision						



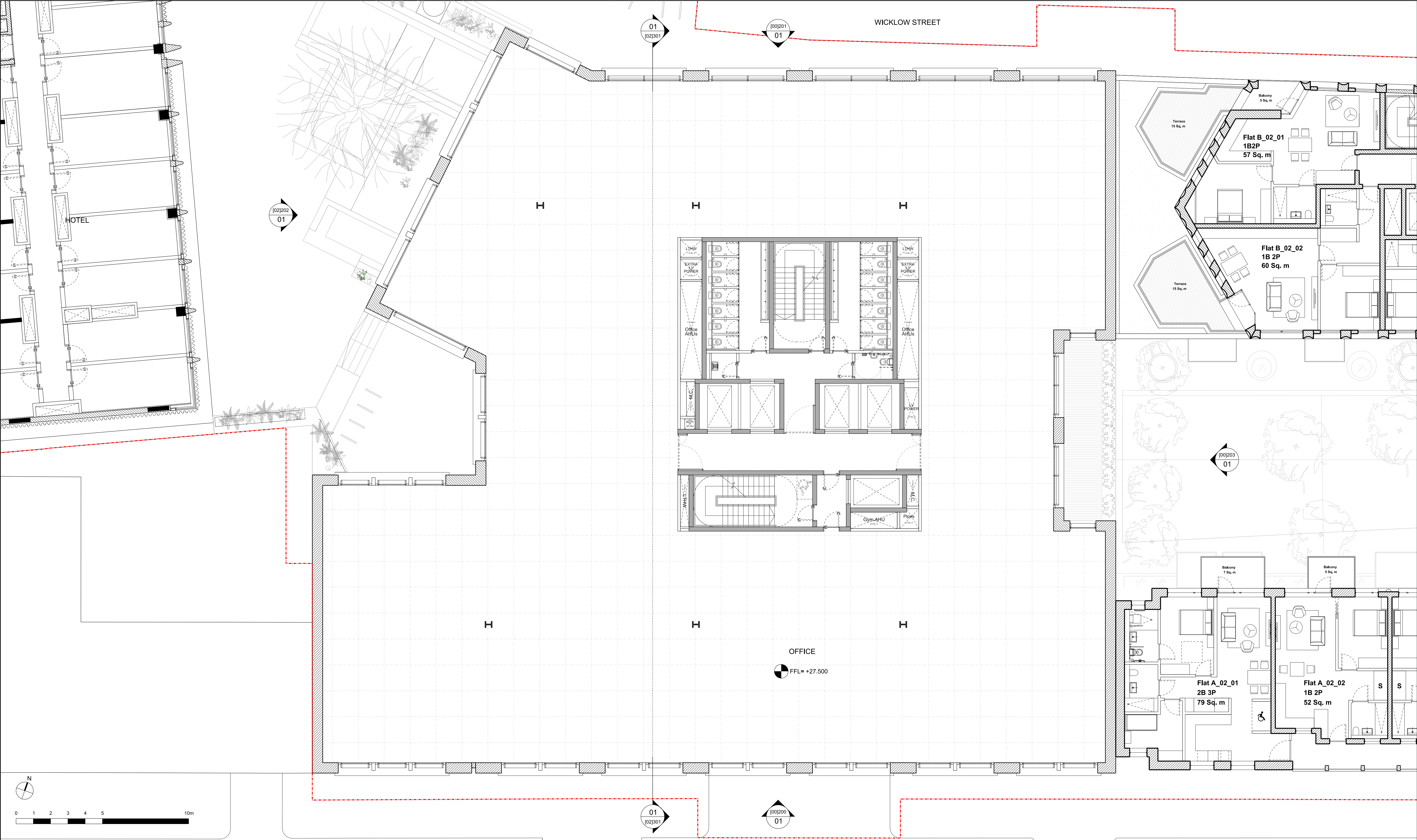
01 GENERAL ARRANGEMENT: UPPER GROUND FLOOR PLAN (SWINTON ST)

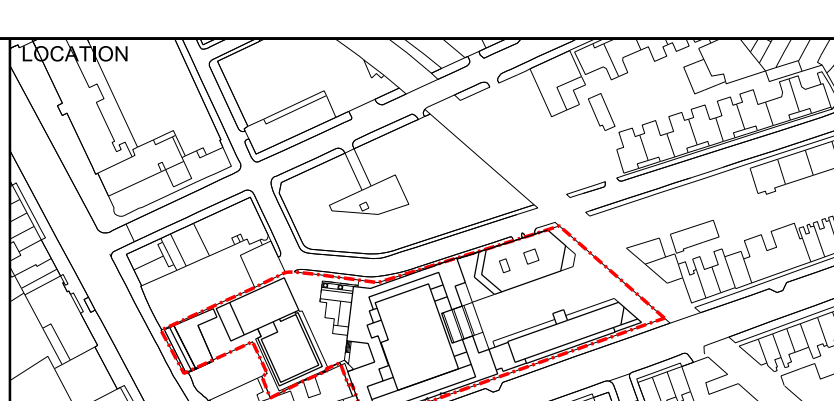
KEY		REV	DATE	CONSULTANTS		NAME	NOTE When this drawing is issued in uncontrolled CAD format it will be accompanied by a PDF version and is issued to enable the recipient to prepare their own documents / models / drawings for which they are solely responsible. The recipient should report all drawing errors, omissions and discrepancies to the architect. All dimensions should be checked on site by the contractor and such dimensions shall be the contractor's responsibility. Alford Hall Monaghan Morris Limited accepts no responsibility or liability for:- - any use of this drawing by parties other than the party for whom it was prepared or for purposes other than those for which it was prepared - any alterations or additions to or discrepancies arising out of changes to the background information on which the drawings are based that was current at the time of issue, and which occur to that information after it has been issued by AHMM - any loss or degradation of the information held in this drawing resulting from the translation from the original file format to any other file format or from the recipients reading of it in any other programme or any version of the programme other than that which was used to prepare it - the accuracy of survey information provided by others or for any costs, claims, proceedings and expenses arising out of reliance on such information - any scaling from this drawing other than by the local planning authority solely for the purposes of the planning application to which it relates	LOCATION 	ALLFORD HALL MONAGHAN MORRIS			
			P01	CLIENT:		GROVEWORLD			ARCHITECTS Ltd MORELANDS, 5-23 OLD STREET LONDON EC1V 9HL TEL 020 7251 5261 FAX 020 7251 5123 WEB WWW.AHMM.CO.UK			
				STRUCTURAL ENGINEER:		WSP			job title			
				MECHANICAL ENGINEER:		XC02			330 GRAYS INN ROAD			
				COST CONSULTANT:		TURNER TOWNSEND			drawing title / location			
				ACOUSTIC CONSULTANT:		HANN TUCKER			PROPOSED OFFICE FLOOR PLANS UPPER GROUND FLOOR PLAN (SWINTON ST)			
				TRANSPORT CONSULTANT:		STEER			drawn by	checked	scale	status
				DAYLIGHT / SUNLIGHT :		POINT2			GS	MH	1:100@A1; 1:200@A3	PLANNING
									project	zone	source	classification
									18116	02	A (00)_P100M	P01
									drawing no. revision			

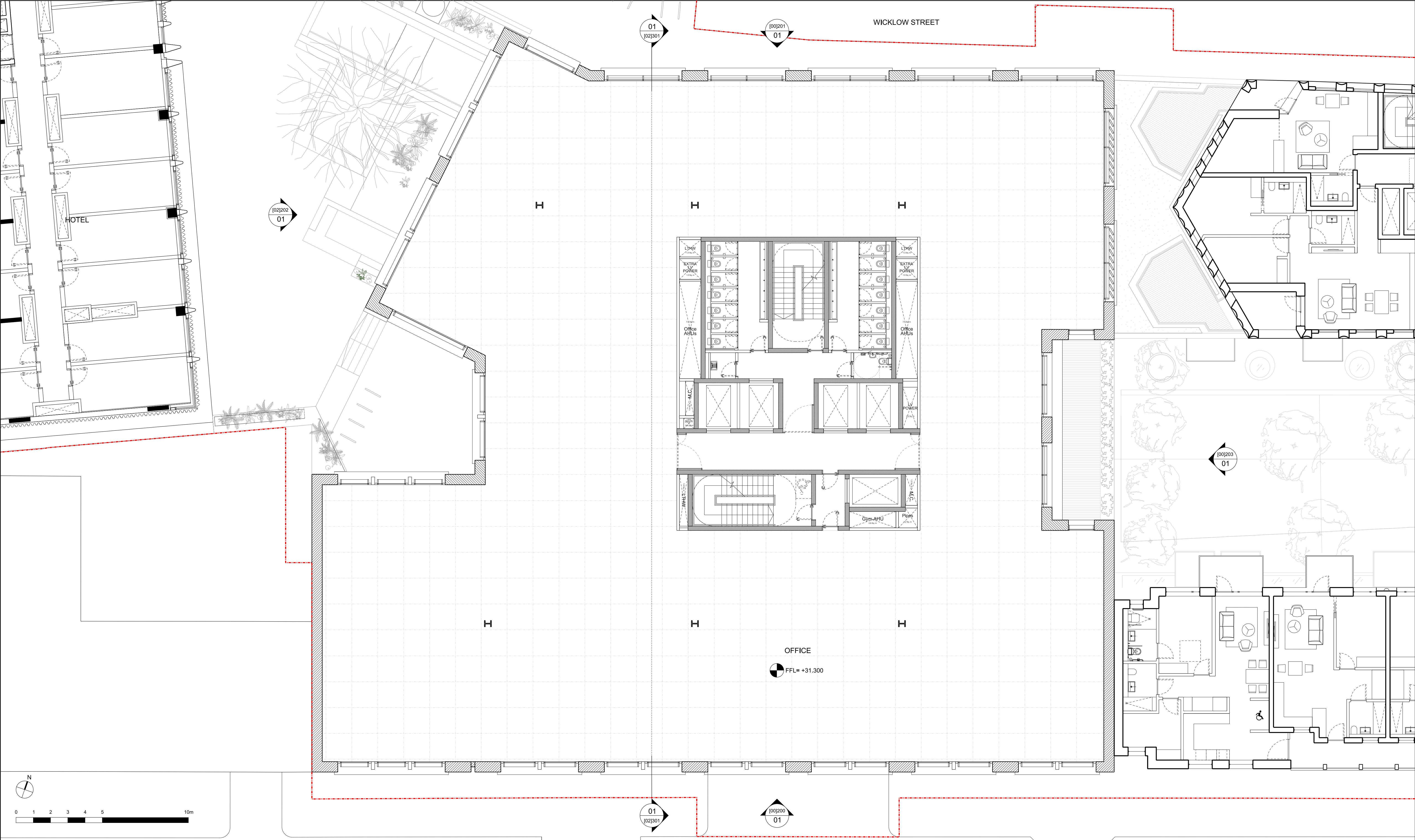


01 GENERAL ARRANGEMENT: FIRST FLOOR PLAN


KEY	REV	DATE	CONSULTANTS	NAME	NOTE	LOCATION	ALLFORD HALL MONAGHAN MORRIS
	P01	30/11/20	CLIENT:	GROVEWORLD	When this drawing is issued in uncontrolled CAD format it will be accompanied by a PDF version and is issued to enable the recipient to prepare their own documents / models / drawings for which they are solely responsible.		ARCHITECTS Ltd MORELANDS, 5-23 OLD STREET LONDON EC1V 9HL TEL 020 7251 5261 FAX 020 7251 5123 WEB WWW.AHMM.CO.UK
			STRUCTURAL ENGINEER:	WSP	The recipient should report all drawing errors, omissions and discrepancies to the architect. All dimensions should be checked on site by the contractor and such dimensions shall be the contractor's responsibility.		job title
			MECHANICAL ENGINEER:	XC02			330 GRAYS INN ROAD
			COST CONSULTANT:	TURNER TOWNSEND			drawing title / location
			ACOUSTIC CONSULTANT:	HANN TUCKER	Alford Hall Monaghan Morris Limited accepts no responsibility or liability for:- - any use of this drawing by parties other than the party for whom it was prepared or for purposes other than those for which it was prepared - any alterations or additions to or discrepancies arising out of changes to the background information on which the drawings are based that was current at the time of issue, and which occur to that information after it has been issued by AHMM - any loss or degradation of the information held in this drawing resulting from the translation from the original file format to any other file format or from the recipients reading of it in any other programme or any version of the programme other than that which was used to prepare it - the accuracy of survey information provided by others or for any costs, claims, proceedings and expenses arising out of reliance on such information - any scaling from this drawing other than by the local planning authority solely for the purposes of the planning application to which it relates		PROPOSED OFFICE FLOOR PLANS FIRST FLOOR
			TRANSPORT CONSULTANT:	STEER			drawn by checked scale status
			DAYLIGHT / SUNLIGHT :	POINT2			GS MH 1:100@A1; 1:200@A3 PLANNING
							project zone source classification drawing no. revision
							18116 02 A (00)_P101 P01



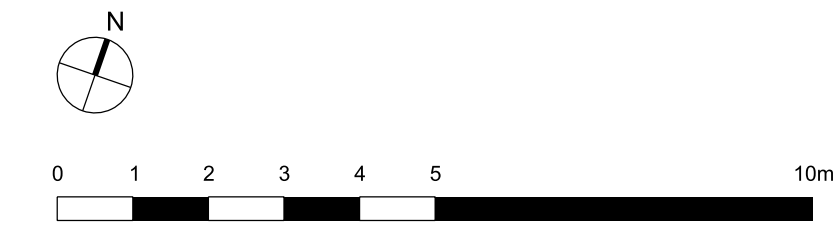
01 GENERAL ARRANGEMENT: SECOND FLOOR PLAN											
KEY		REV DATE		CONSULTANTS		NAME		NOTE			
		P01 30/11/20 ISSUED FOR PLANNING		CLIENT:		GROVEWORLD		When this drawing is issued in uncontrolled CAD format it will be accompanied by a PDF version and is issued to enable the recipient to prepare their own documents / models / drawings for which they are solely responsible.			
				STRUCTURAL ENGINEER:		WSP		The recipient should report all drawing errors, omissions and discrepancies to the architect. All dimensions should be checked on site by the contractor and such dimensions shall be the contractor's responsibility.			
				MECHANICAL ENGINEER:		XC02					
				COST CONSULTANT:		TURNER TOWNSEND					
				ACOUSTIC CONSULTANT:		HANN TUCKER		Allford Hall Monaghan Morris Limited accepts no responsibility or liability for:-			
				TRANSPORT CONSULTANT:		STEER		- any use of this drawing by parties other than the party for whom it was prepared or for purposes other than those for which it was prepared			
				DAYLIGHT / SUNLIGHT :		POINT2		- any alterations or additions to or discrepancies arising out of changes to the background information on which the drawings are based that was current at the time of issue, and which occur to that information after it has been issued by AHMM			
								- any loss or degradation of the information held in this drawing resulting from the translation from the original file format to any other file format or from the recipient's reading of it in any other programme or any version of the programme other than that which was used to prepare it			
								- the accuracy of survey information provided by others or for any costs, claims, proceedings and expenses arising out of reliance on such information			
								- any scaling from this drawing other than by the local planning authority solely for the purposes of the planning application to which it relates			
				</							



01 GENERAL ARRANGEMENT: THIRD FLOOR PLAN

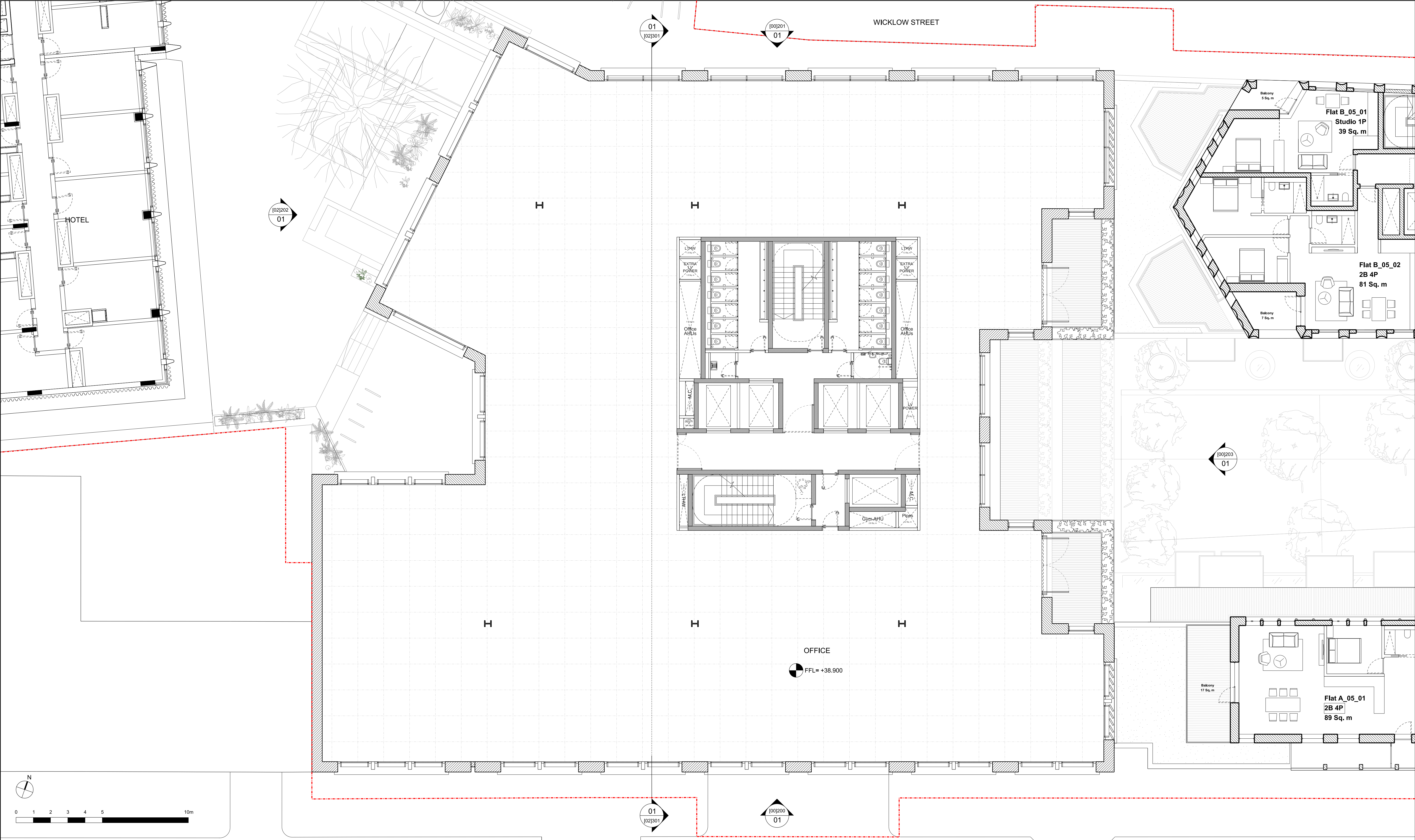
KEY	REV	DATE	CONSULTANTS	NAME	NOTE		
	P01	30/11/20	ISSUED FOR PLANNING	CLIENT:	GROVEWORLD		When this drawing is issued in uncontrolled CAD format it will be accompanied by a PDF version and is issued to enable the recipient to prepare their own documents / models / drawings for which they are solely responsible.
				STRUCTURAL ENGINEER:	WSP		The recipient should report all drawing errors, omissions and discrepancies to the architect. All dimensions should be checked on site by the contractor and such dimensions shall be the contractor's responsibility.
				MECHANICAL ENGINEER:	XC02		
				COST CONSULTANT:	TURNER TOWNSEND		
				ACOUSTIC CONSULTANT:	HANN TUCKER		Allford Hall Monaghan Morris Limited accepts no responsibility or liability for:-
				TRANSPORT CONSULTANT:	STEER		- any use of this drawing by parties other than the party for whom it was prepared or for purposes other than those for which it was prepared
				DAYLIGHT / SUNLIGHT :	POINT2		- any alterations or additions to or discrepancies arising out of changes to the background information on which the drawings are based that was current at the time of issue, and which occur to that information after it has been issued by AHMM
							- any loss or degradation of the information held in this drawing resulting from the translation from the original file format to any other file format or from the recipients reading of it in any other programme or any version of the programme other than that which was used to prepare it
							- the accuracy of survey information provided by others or for any costs, claims, proceedings and expenses arising out of reliance on such information
							- any scaling from this drawing other than by the local planning authority solely for the purposes of the planning application to which it relates

ALLFORD HALL MONAGHAN MORRIS					
ARCHITECTS Ltd					
MORELANDS, 5-23 OLD STREET LONDON EC1V 9HL					
TEL 020 7251 5261 FAX 020 7251 5123 WEB WWW.AHMM.CO.UK					
job title					
330 GRAYS INN ROAD					
drawing title / location					
PROPOSED OFFICE FLOOR PLANS					
THIRD FLOOR					
drawn by	checked	scale	status		
GS	MH	1:100@A1; 1:200@A3	PLANNING		
project	zone	source	classification	drawing no.	revision
18116	02	A	(00)_P103	P01	



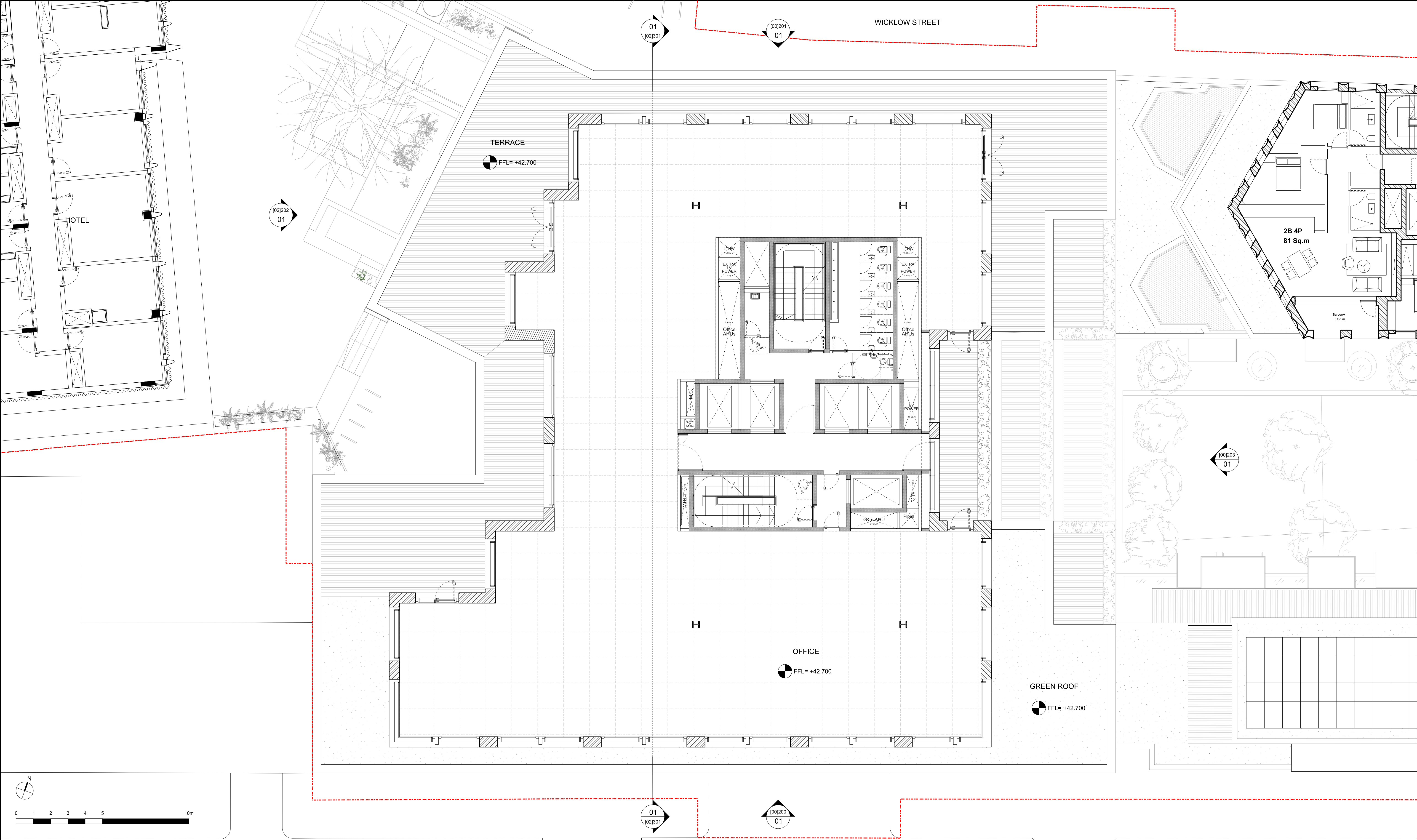
KEY

© Allford Hall Monaghan Morris Limited

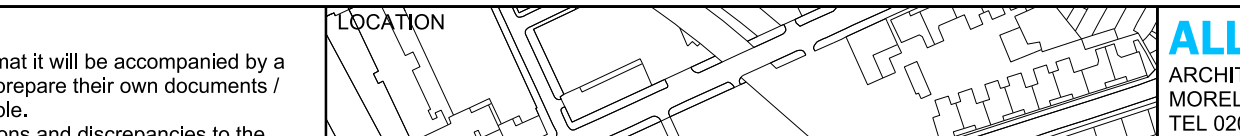


01 GENERAL ARRANGEMENT: FIFTH FLOOR PLAN

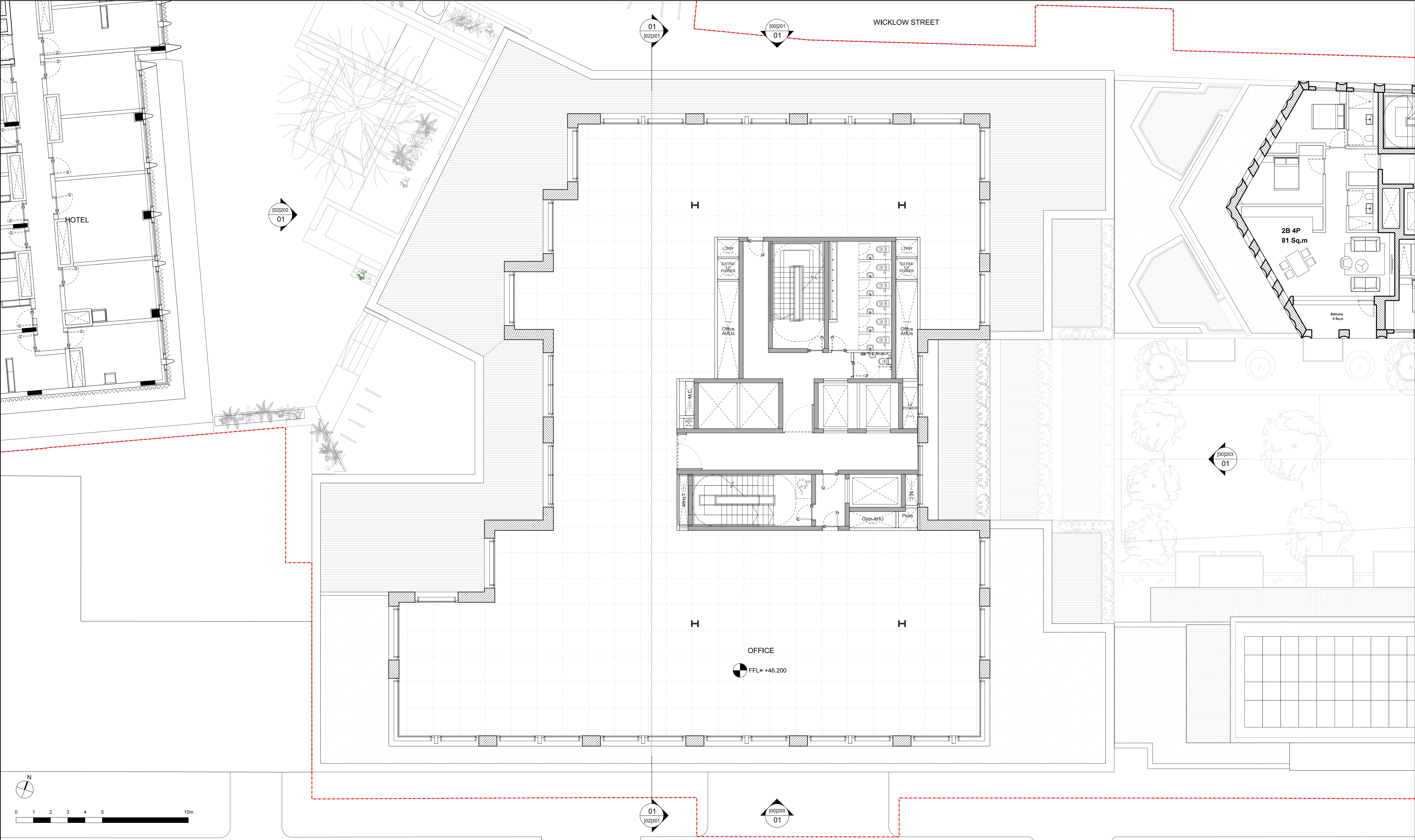
KEY	REV	DATE	CONSULTANTS	NAME	NOTE	LOCATION	ALLFORD HALL MONAGHAN MORRIS
	P01	30/11/20	CLIENT:	GROVEWORLD	When this drawing is issued in uncontrolled CAD format it will be accompanied by a PDF version and is issued to enable the recipient to prepare their own documents / models / drawings for which they are solely responsible. The recipient should report all drawing errors, omissions and discrepancies to the architect. All dimensions should be checked on site by the contractor and such dimensions shall be the contractor's responsibility.		ARCHITECTS Ltd MORELANDS, 5-23 OLD STREET LONDON EC1V 9HL TEL 020 7251 5261 FAX 020 7251 5123 WEB WWW.AHMM.CO.UK
			STRUCTURAL ENGINEER:	WSP			job title 330 GRAYS INN ROAD
			MECHANICAL ENGINEER:	XC02			drawing title / location PROPOSED OFFICE FLOOR PLANS FIFTH FLOOR
			COST CONSULTANT:	TURNER TOWNSEND			drawn by GS
			ACOUSTIC CONSULTANT:	HANN TUCKER	Alford Hall Monaghan Morris Limited accepts no responsibility or liability for:- - any use of this drawing by parties other than the party for whom it was prepared or for purposes other than those for which it was prepared - any alterations or additions to or discrepancies arising out of changes to the background information on which the drawings are based that was current at the time of issue, and which occur to that information after it has been issued by AHMM - any loss or degradation of the information held in this drawing resulting from the translation from the original file format to any other file format or from the recipients reading of it in any other programme or any version of the programme other than that which was used to prepare it - the accuracy of survey information provided by others or for any costs, claims, proceedings and expenses arising out of reliance on such information - any scaling from this drawing other than by the local planning authority solely for the purposes of the planning application to which it relates		checked MH
			TRANSPORT CONSULTANT:	STEER			scale 1:100@A1; 1:200@A3
			DAYLIGHT / SUNLIGHT :	POINT2			status PLANNING
							project 18116
							zone 02
							source A
							classification (00)_P105
							drawing no. P01
							revision



01 GENERAL ARRANGEMENT: SIXTH FLOOR PLAN

KEY	REV	DATE	CONSULTANTS	NAME	NOTE	LOCATION	
	P01	30/11/20	ISSUED FOR PLANNING	CLIENT:	GROVEWORLD	When this drawing is issued in uncontrolled CAD format it will be accompanied by a PDF version and is issued to enable the recipient to prepare their own documents / models / drawings for which they are solely responsible.	
				STRUCTURAL ENGINEER:	WSP	The recipient should report all drawing errors, omissions and discrepancies to the architect. All dimensions should be checked on site by the contractor and such dimensions shall be the contractor's responsibility.	
				MECHANICAL ENGINEER:	XC02		
				COST CONSULTANT:	TURNER TOWNSEND		
				ACOUSTIC CONSULTANT:	HANN TUCKER	Allford Hall Monaghan Morris Limited accepts no responsibility or liability for:-	
				TRANSPORT CONSULTANT:	STEER	- any use of this drawing by parties other than the party for whom it was prepared or for purposes other than those for which it was prepared	
				DAYLIGHT / SUNLIGHT :	POINT2	- any alterations or additions to or discrepancies arising out of changes to the background information on which the drawings are based that was current at the time of issue, and which occur to that information after it has been issued by AHMM	
						- any loss or degradation of the information held in this drawing resulting from the translation from the original file format to any other file format or from the recipient's reading of it in any other programme or any version of the programme other than that which was used to prepare it	
						- the accuracy of survey information provided by others or for any costs, claims, proceedings and expenses arising out of reliance on such information	
						- any scaling from this drawing other than by the local planning authority solely for the purposes of the planning application to which it relates	

ALLFORD HALL MONAGHAN MORRIS						
ARCHITECTS Ltd						
MORELANDS, 5-23 OLD STREET LONDON EC1V 9HL						
TEL 020 7251 5261 FAX 020 7251 5123 WEB WWW.AHMM.CO.UK						
job title						
330 GRAYS INN ROAD						
drawing title / location						
PROPOSED OFFICE FLOOR PLANS						
SIXTH FLOOR						
drawn by	checked	scale			status	
GS	MH	1:100@A1; 1:200@A3			PLANNING	
project	zone	source	classification	drawing no.	revision	
18116	02	A	(00)_P106	P01		



01 GENERAL ARRANGEMENT: SEVENTH FLOOR PLAN

KEY	REV	DATE	CONSULTANTS	NAME	NOTE		ALLFORD HALL MONAGHAN MORRIS ARCHITECTS Ltd MORELANDS, 5-23 OLD STREET LONDON EC1V 9HL TEL 020 7251 5261 FAX 020 7251 5123 WEB WWW.AHMM.CO.UK	
	P01	30/11/20	ISSUED FOR PLANNING	CLIENT:	GROVEWORLD			When this drawing is issued in uncontrolled CAD format it will be accompanied by a PDF version and is issued to enable the recipient to prepare their own documents / models / drawings for which they are solely responsible.
				STRUCTURAL ENGINEER:	WSP			The recipient should report all drawing errors, omissions and discrepancies to the architect. All dimensions should be checked on site by the contractor and such dimensions shall be the contractor's responsibility.
				MECHANICAL ENGINEER:	XC02			
				COST CONSULTANT:	TURNER TOWNSEND			
				ACOUSTIC CONSULTANT:	HANN TUCKER			Allford Hall Monaghan Morris Limited accepts no responsibility or liability for:-
				TRANSPORT CONSULTANT:	STEER			- any use of this drawing by parties other than the party for whom it was prepared or for purposes other than those for which it was prepared
				DAYLIGHT / SUNLIGHT :	POINT2			- any alterations or additions to or discrepancies arising out of changes to the background information on which the drawings are based that was current at the time of issue, and which occur to that information after it has been issued by AHMM
								- any loss or degradation of the information held in this drawing resulting from the translation from the original file format to any other file format or from the recipients reading of it in any other programme or any version of the programme other than that which was used to prepare it
								- the accuracy of survey information provided by others or for any costs, claims, proceedings and expenses arising out of reliance on such information
					- any scaling from this drawing other than by the local planning authority solely for the purposes of the planning application to which it relates			



P01 30/11/20 ISSUED FOR PLANNING
 P02 12/03/21 ISSUED FOR PLANNING
 CLIENT: GROVEWORLD
 STRUCTURAL ENGINEER: WSP
 When this drawing is issued in uncontrolled CAD format it will be accompanied by a PDF version and is issued to enable the recipient to prepare their own documents / models / drawings for which they are solely responsible.
 This recipient should exercise reasonable care, competence and discretion for the ARCHITECTS LTD
 MORELANDS, 5-23 OLD STREET LONDON EC1V 9HL
 TEL 020 7251 5581 FAX 020 7251 5123 WEB WWW.AHHM.CO.UK

© Allford Hall Monaghan Morris Limited