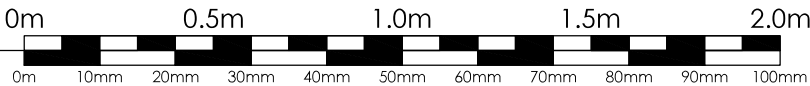
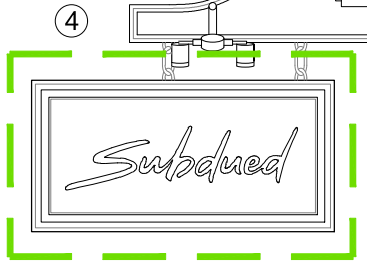


SCALE 1 : 20  
SCALE 1 : 1

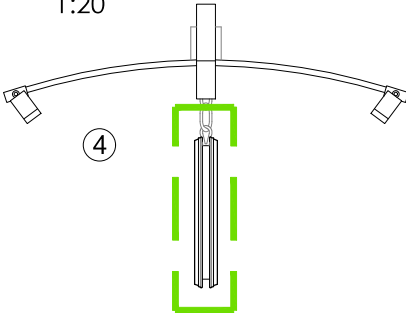


This drawing is copyright and may not be reproduced in whole or part without written authority.  
Bishop & Associates does not accept liability for any deviation to our drawings or specification.  
All measurement subject to full measured survey.

03 HANGING SIGNAGE  
FRONT VIEW  
1:20



04 HANGING SIGNAGE  
SIDE VIEW  
1:20



Signage Zone

#### Materials

- ① New two panel shop door in style to match existing. Finished in Matt Black with Brass ironmongery.
- ② New overclad traditional style Shopfront fascia in timber and finished in Matt Black to match existing frames. Shop logo 'Subdued' painted in contrasting white.
- ③ Soft recessed downlight (x3) to underside of timber fascia.
- ④ 2x New Hanging Signs one to each elevation. Timber sign painted in Matt Black with shop logo in contrasting White. Hanging Signs are suspended from the existing fixing brackets with existing spotlights retained.

BISHOP &  
ASSOCIATES

Project: 37a Neal Street, West End, WC2H 9PR

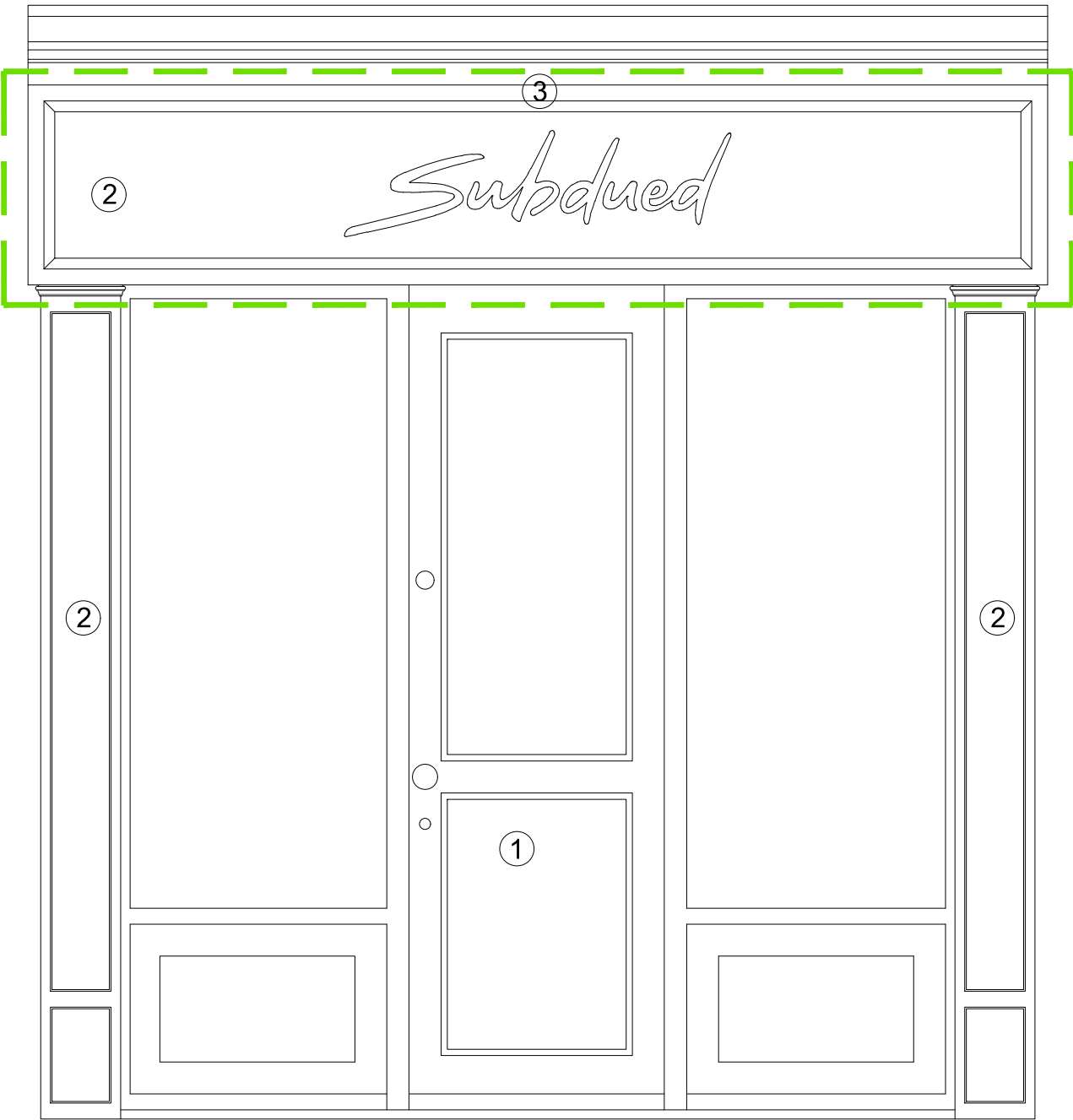
TITLE DRAWING:  
**NEAL STREET SIGNAGE DETAILS: 1:20**

Scale:  
1:20 @ A3

Date:  
August 2020

Drawing no.:  
37aNS\_DE01\_rev2

01 FRONT VIEW - SHOPFRONT CLADDING - 37A NEAL STREET  
1:20



02 SIDE VIEW - SHOPFRONT CLADDING  
1:20

