

D01 SECTION THROUGH CANAL WALKWAY 02
230 SCALE 1:20

LEGEND

1. This drawing is to be read in conjunction with all other drawings and specifications.
2. Do not scale off this drawing. Written dimensions to be taken only.
3. Any discrepancies found between this drawing and other drawings and specifications in the construction documents must be referred to the Landscape Architect prior to work commencing.
4. This drawing must not be copied in whole or in part without written consent of LDA design.
5. These drawings are for finishes only. All foundation, fixing, paving depths and drainage details to be provided by others.
6. All dimensions in mm unless otherwise stated.
7. Where dimension sizes of units are given they state length x width x depth.

NOTES:

REFER TO GENERAL ARRANGEMENT LAYOUT AND REFERENCE PLAN DWG 5657_CG_101

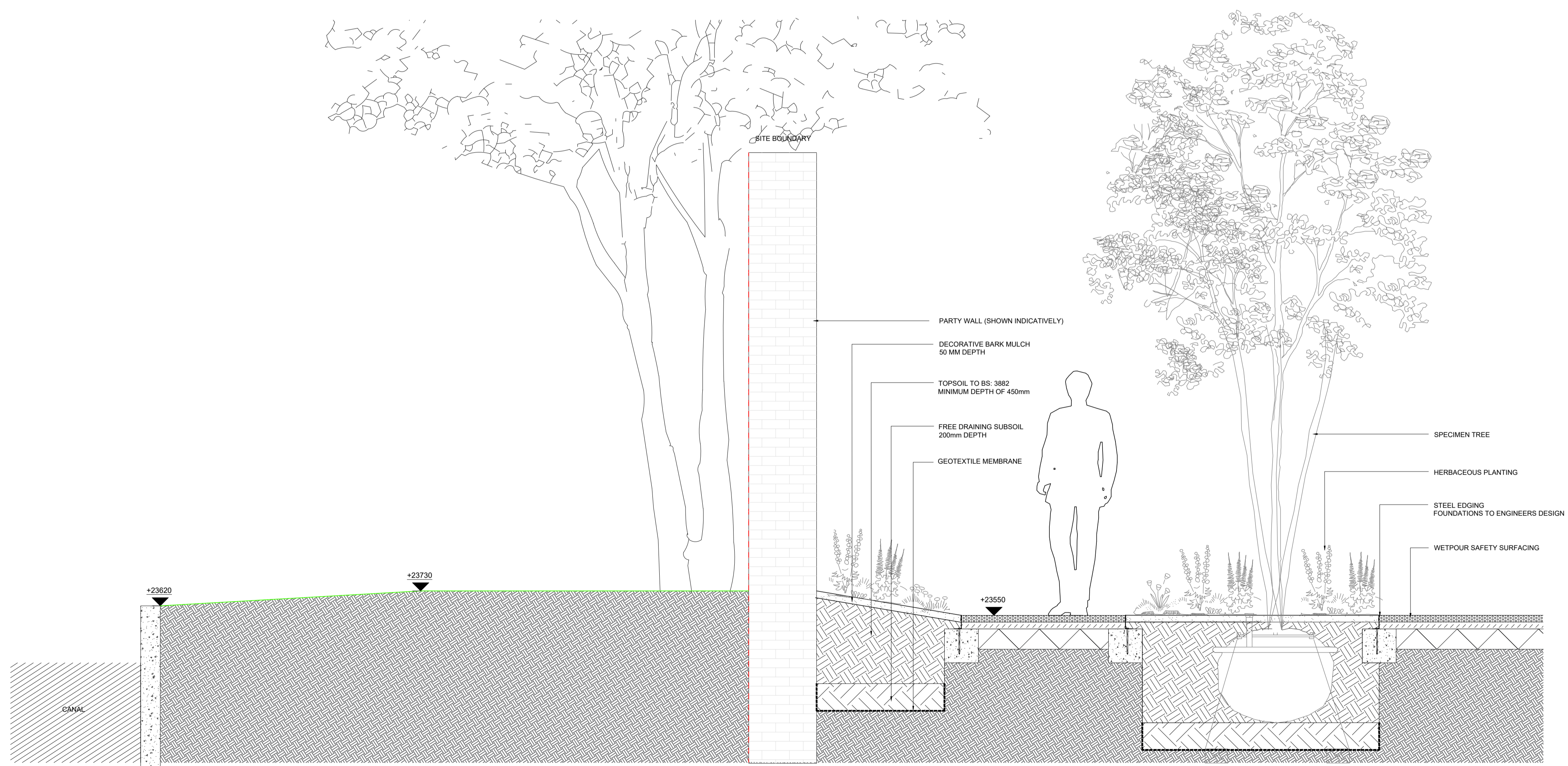
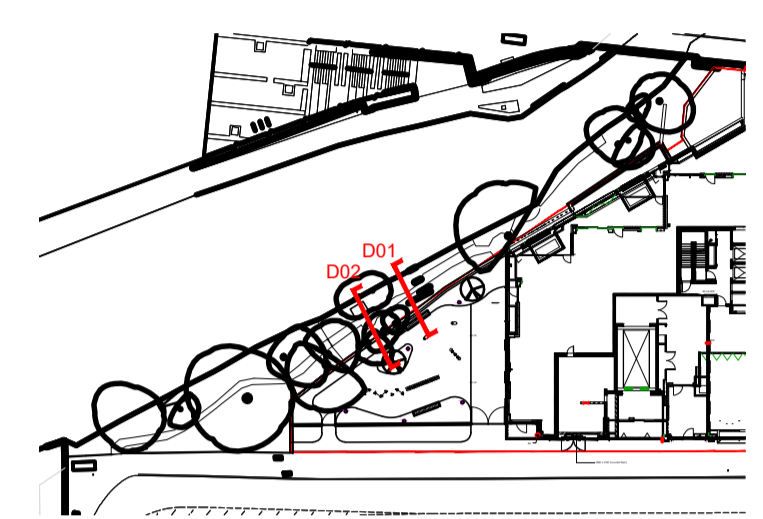
REFER TO HARDWORKS LAYOUT AND REFERENCE PLAN DWG 5657_CG_200

REFER TO FURNITURE LAYOUT AND REFERENCE PLAN DWG 5657_CG_300

REFER TO SOFTWARES LAYOUT AND REFERENCE PLAN DWG 5657_CG_400

TO BE READ IN CONJUNCTION WITH LANDSCAPE ARCHITECT'S EXTERNAL WORKS SPECIFICATION

TO BE READ IN CONJUNCTION WITH ARCHITECT'S GA DRAWINGS 0010 SERIES



D02 SECTION THROUGH CANAL WALKWAY 03
231 SCALE 1:20

READ THIS FIRST

Note for Contractors
This drawing should be considered along with the risk information contained in the CDM Pre Construction Information. This information will include details of the SIGNIFICANT risks which LDA Design has identified which may arise from constructing their designs shown on this drawing. A Competent Contractor should be aware of the typical risks associated with doing this work.

Note for Workers
DO NOT START YOUR WORK unless you know the Risks and Controls relating to the work on this drawing (including SAFE SEQUENCES OF WORK and EQUIPMENT).

Do not issue copies of parts of this drawing without the above Note for Workers (unless you are sure that the Workers can undertake the work safely).

REV.	DESCRIPTION	APP.	DATE
C	Party wall shown indicatively	AW	12/11/20
B	Stage 4: Issued for information	AW	12/08/20
A	Stage 4: Issued for information	AW	30/07/20

LDA DESIGN

PROJECT TITLE
101 Camley Street

DRAWING TITLE
Stage 4: Canalside Gardens
Cross Sections
Sheet 02

ISSUED BY	Exeter	T: 01392 260 430
DATE	July 2020	DRAWN AW
SCALE: A1	1:20	CHECKED
STATUS	Tender	APPROVED

DWG. NO 5657_CG_A_231

No dimensions are to be scaled from this drawing. All dimensions are to be checked on site. Area measurements for indicative purposes only.

© LDA Design Consulting Ltd. Quality Assured to BS EN ISO 9001 : 2015
Sources: Ordnance Survey

