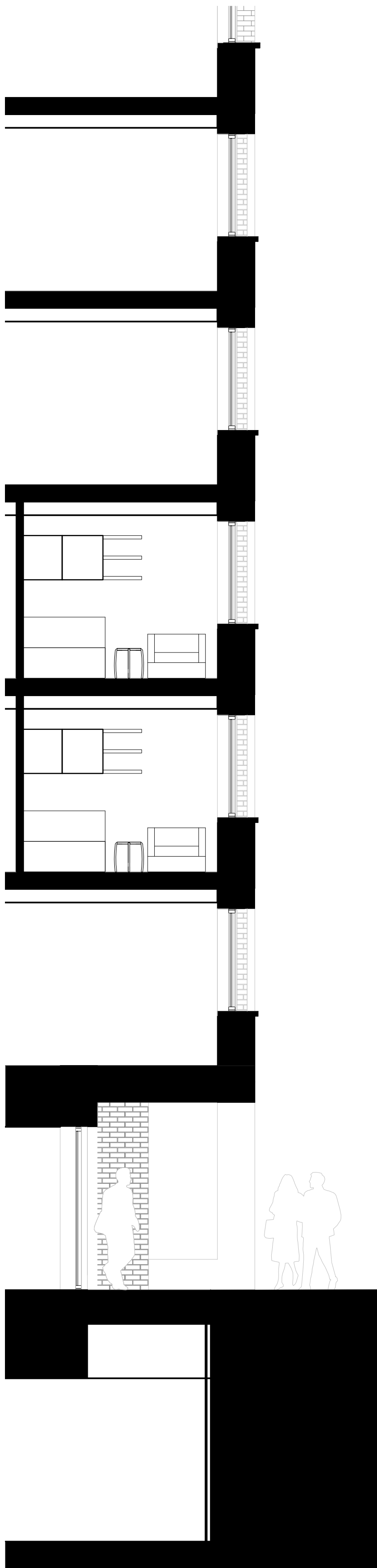
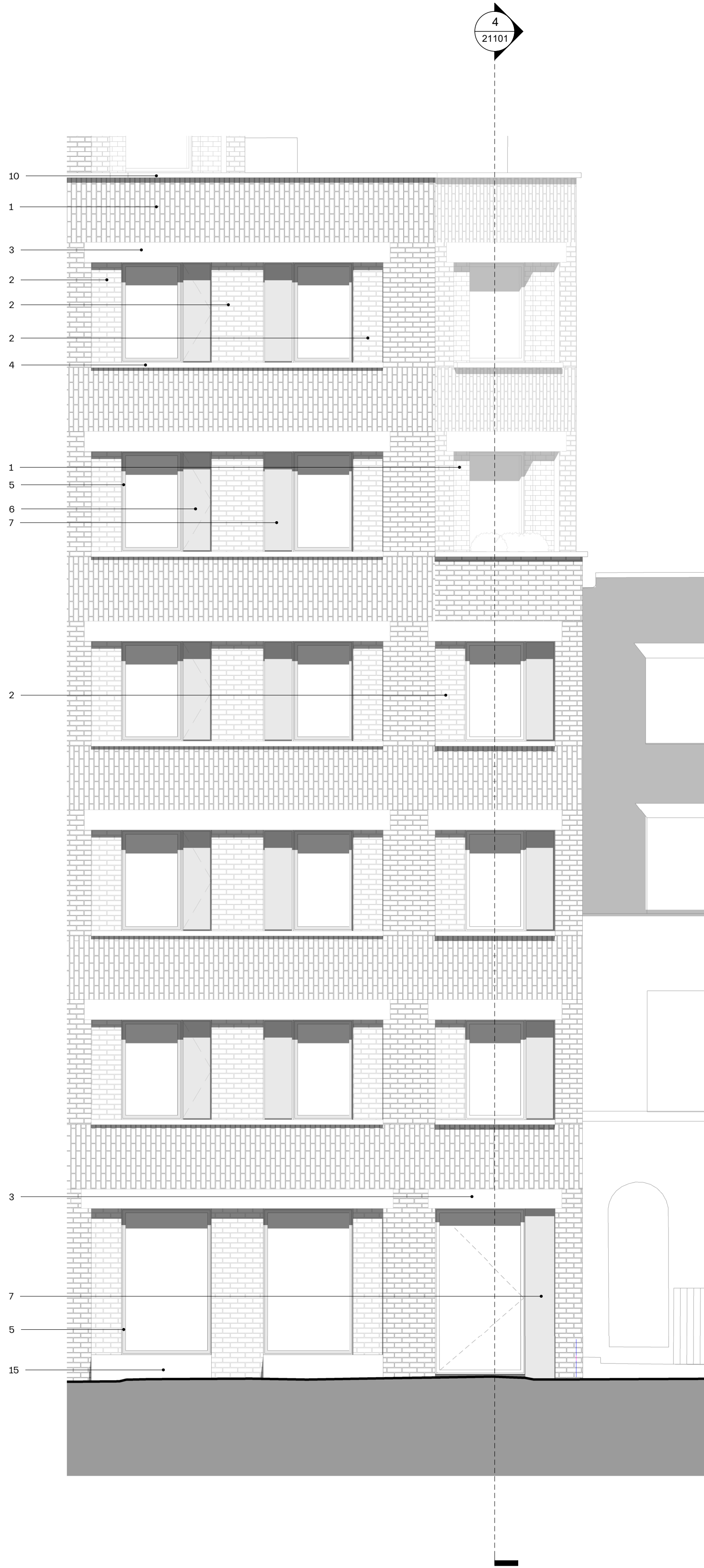


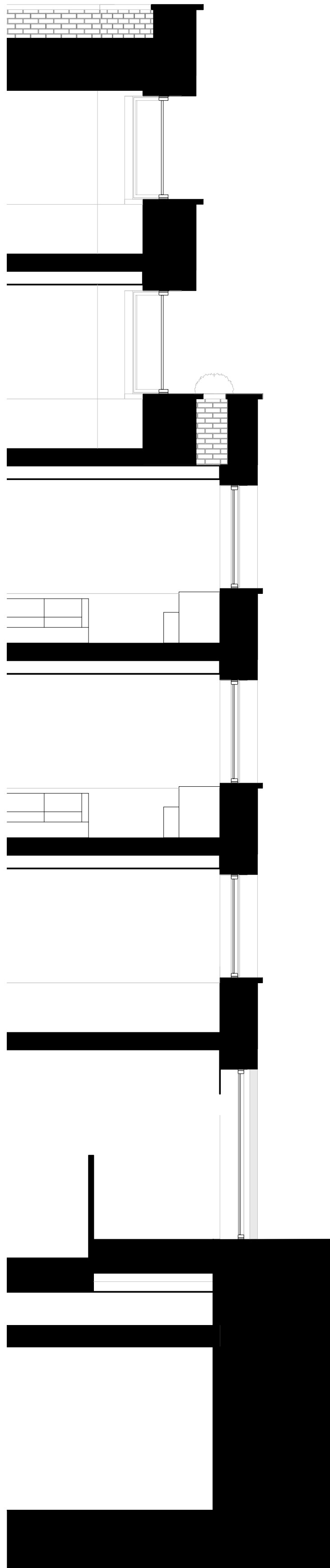
1
21101
Lower Level Bay Elevation 1
1 : 50



2
21101
Lower Level Bay Section 1
1 : 50



3
21101
Lower Level Bay Elevation 2
1 : 50



4
21101
Lower Level Bay Section 2
1 : 50

NOTES:

KEY

Refer to Design and Access Statement for relevant material palettes, colours and textures.

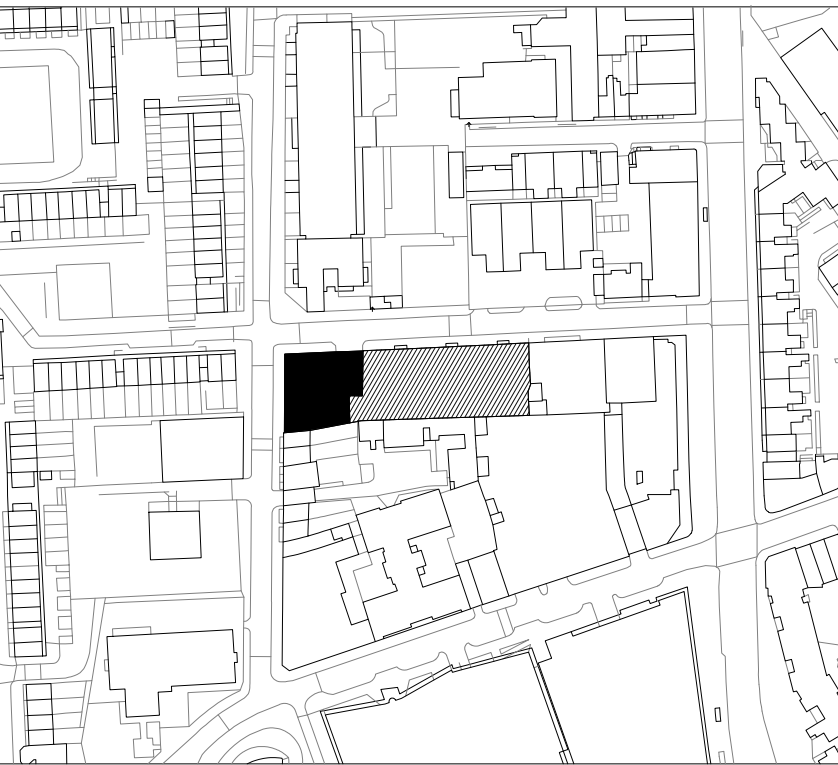
1. Dark Plum coloured brickwork. Stretcher bond (brick-type 01)
2. Light Grey/Cream coloured brickwork. Stretcher bond (brick-type 02)
3. Light-Grey coloured Precast Reconstituted Stone lintel. Matte finish
4. Light-Grey coloured Precast Reconstituted Stone Window sill. Matte Finish.
5. Light Grey/Cream coloured Aluminium window frame. Matte Finish coloured to match brick type 02
6. Light Grey/Cream coloured Aluminium openable panel for ventilation. Matte Finish coloured to match brick type 02
7. Light Grey/Cream coloured Metal balustrade to loggia and terrace. Matte Finish coloured to match brick type 02
8. Light Grey/Cream coloured Louvered ventilated doors. Matte Finish coloured to match brick type 02
9. Light Grey/Cream coloured Aluminium spandrel panel. Matte Finish coloured to match brick type 02
10. Light Grey/Cream coloured Precast Reconstituted Stone coping. Matte finish
11. Dark Grey/Charcoal black Metal panels. Matte Finish coloured to match existing stair core cladding in plot 8.
12. Light Grey/Cream coloured brickwork. Vertical soldier bond (brick-type 02)
13. Signage area. Embossed within Light-Grey coloured Precast Reconstituted Stone lintel.
14. UKPN louvered door. Grey coloured metalwork door. Matte Finish coloured to match brick type 02
15. Light-Grey coloured Precast Reconstituted Stone planter and bench
16. Light-Grey coloured Aluminium frame glazed entrance doors. Matte Finish coloured to match brick type 02
17. Light-Grey coloured Perforated Aluminium screen fixed to louveto roof plant enclosure. Matte Finish coloured to match brick type 02
18. Light-Grey coloured Precast Reconstituted Stone cladding

P01 30.10.20 Planning

revision date amendment

SCALE BAR

0 500 1000 2500 5000 mm



MORRIS+COMPANY

Unit 7, 16-24 Underwood Street, London N1 7JQ
Tel: +44 (0)20 7566 7440 Fax: +44 (0)20 7014 3119
www.morrisandcompany.com

- Do not scale from this drawing
- All dimensions to be checked on site by the Contractor
- And such dimensions to be their responsibility
- Report all drawing errors and omissions to the Architect
- All dimensions in millimeters unless noted otherwise
- If in doubt ask Contract Administrator

job title

WILLIAM ROAD

drawing title / location

LOWER LEVELS BAY ELEVATIONS AND SECTIONS

status		PLANNING						
date		26/10/2020						
scale		1 : 50 @ A1			1:100 @ A3			
project	originator	zone	level	type	role	number	status - revision	
A295	MCO	BA	ZZ	DR	A	21101	P01	