

L01- 510x260mm Louvre
@2500mm to u/s
measured from internal ffl.

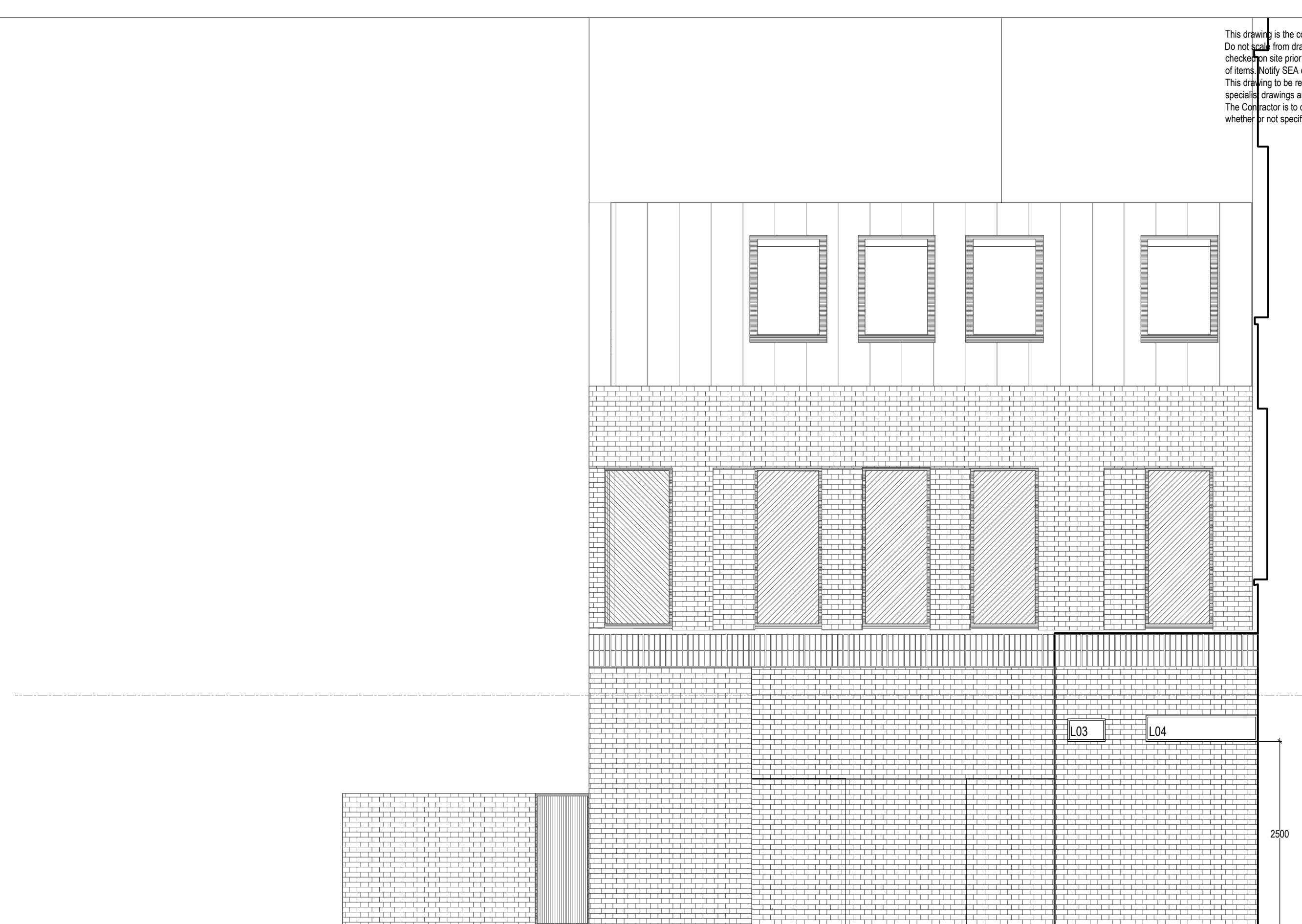
L02-1010x260mm Louvre
@2500mm to u/s
measured from internal ffl.

Refrigeration services
pipework console Hole
sizes t.b.c by HVAC
design but to align with
extract holes adjacent.

L05-250x250mm
Louvre @2500mm
to u/s measured
from internal ffl.

DATUM 101.00m

REAR ELEVATION



L03 - 510x260mm
Louvre @2700mm
to u/s measured
from internal ffl.

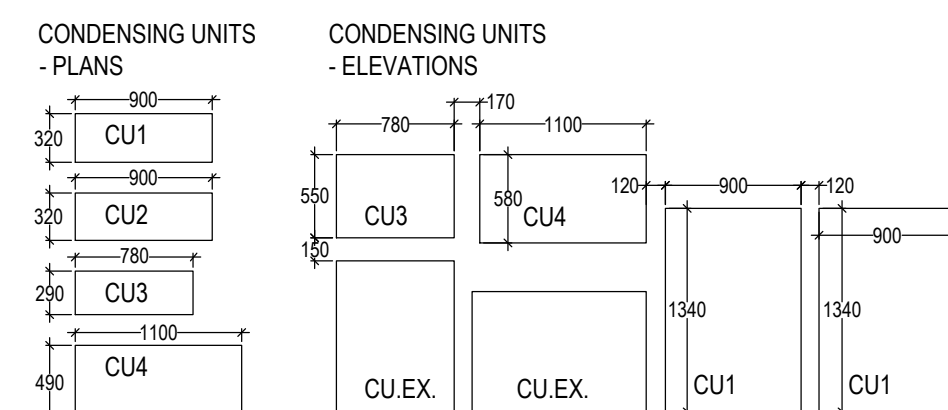
L04 -1510x360mm
Louvre @2700mm to
u/s measured from
internal ffl.

DATUM 101.00m

SIDE ELEVATION

LANDLORDS PLANNING APPLICATION REFERENCE 2018/0613/P

Granted on 29/05/2018 (for external alterations including demolition of ground floor rear extension and replacement with part single storey, part two-storey rear extension, installation of residential front entrance at ground floor level, alterations to front and rear fenestration and change of use of first floor from ancillary restaurant use (Class A3) to flexible A1/A3/B1 use.



CONDENSING UNITS
CU1 - 1340H x 900W x 320D - 70dB(A)
CU2 - 1340H x 900W x 320D - 70dB(A)
CU3 - 550H x 780W x 290D - 65dB(A)
CU4 - 580H x 1100W x 590D - 39dB(A)

CU1 & 2 - Toshiba RAV-GM1601AT8P-E
CU3 - Toshiba RAV-GM561ATP-E
CU4 - IR Model UMS-ZB21-150X-T



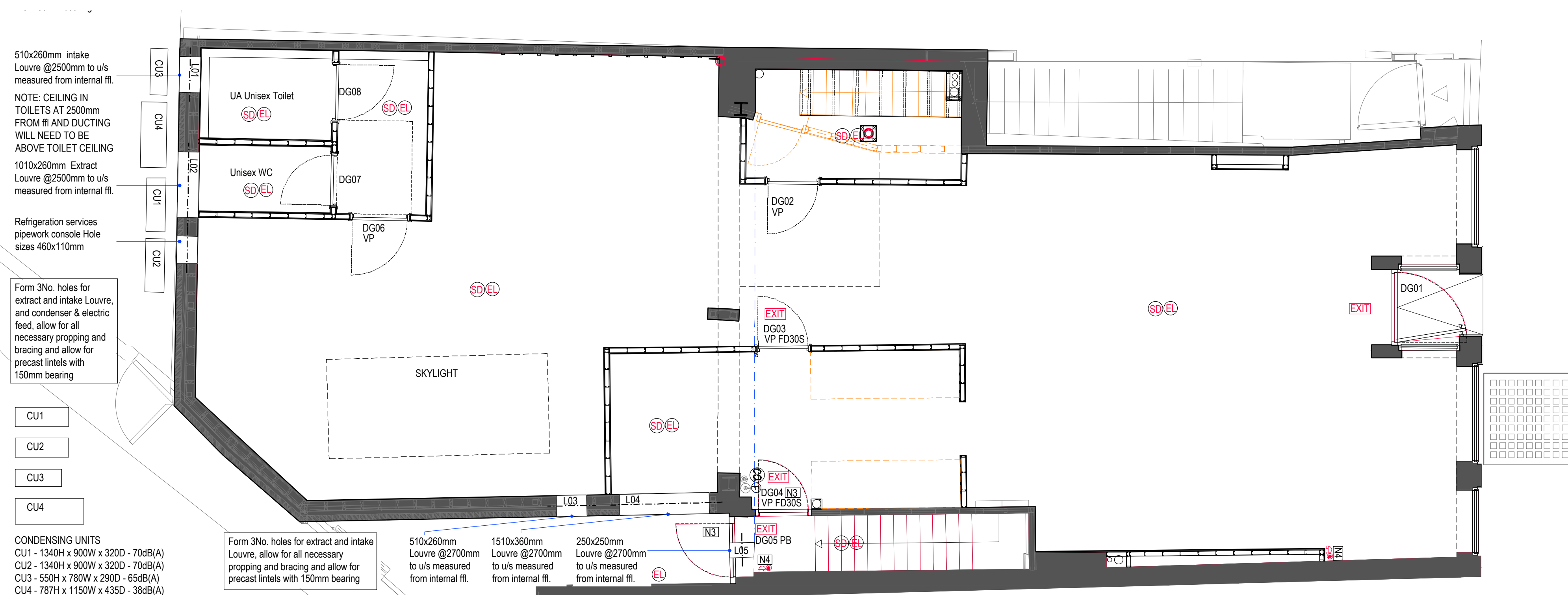
CU1&2



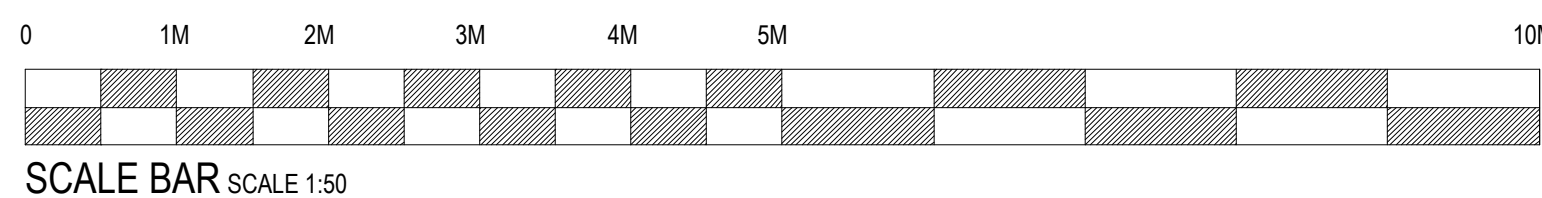
CU3



CU4



GROUND FLOOR PLAN
SHOWING CONDENSER AND
LOUVRE POSITIONS SCALE 1:50



SEA DESIGN GROUP

Client
OLE & STEEN
LAKAGEHUSET

Project
38-40 High Street, Hampstead

Drawing Title
**Proposed External Works
Planning Drawing**

Scale
1:50@A1

Date
25.11.2020

Drg No
219142/PLA

Drg By
JJ

Revisions
By