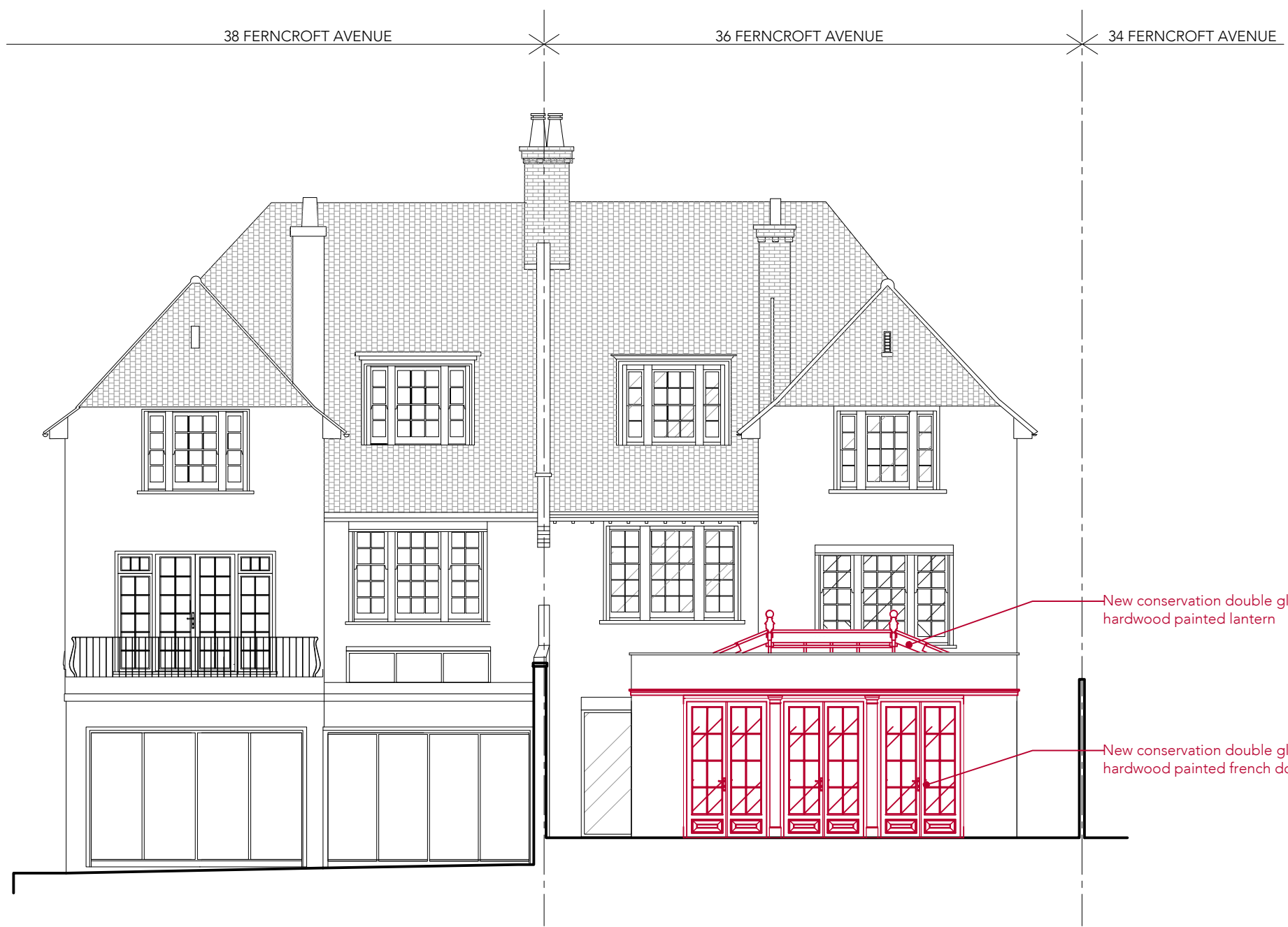


NOTE  
 DO NOT SCALE FROM THIS DRAWING, EXCEPT FOR TOWN PLANNING PURPOSES.  
 THIS DRAWING IS THE PROPERTY OF TG STUDIO AND COPYRIGHT IS RESERVED BY THEM.  
 THIS DRAWING IS ISSUED ON CONDITION THAT IT IS NOT REPRODUCED, USED OR DISCLOSED BY  
 OR TO ANY UNAUTHORIZED PERSON WITHOUT THE PRIOR CONSENT OF TG STUDIO.  
 THE AREAS ON THIS DRAWING HAVE BEEN CALCULATED FROM A CAD DRAWING AND HAVE NO  
 TOLERANCES ADDED OR SUBTRACTED.

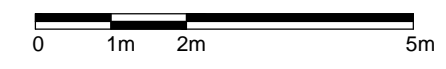
REVISIONS - PLANNING SUBMISSION

DATE 17.11.2020



New conservation double glazed  
 hardwood painted lantern

New conservation double glazed  
 hardwood painted french doors



1 PROPOSED REAR ELEVATION  
 scale 1:100

**TG**  
**STUDIO**  
 Architecture & Interior Design  
 10 RATHBONE PLACE, LONDON W1T 1HP T 020 7636 3838 F 020 7636 5659 WWW.TG-STUDIO.CO.UK

PROJECT 36 FERNCROFT AVENUE  
 LONDON NW3 7PE

DRAWING PROPOSED REAR ELEVATION

DATE 17.11.2020 DRAWN BY GM CHECKED BY TG

STATUS PLANNING SCALE @ A3 1:100

JOB NO. 239 DWG NO. P-310 REV -