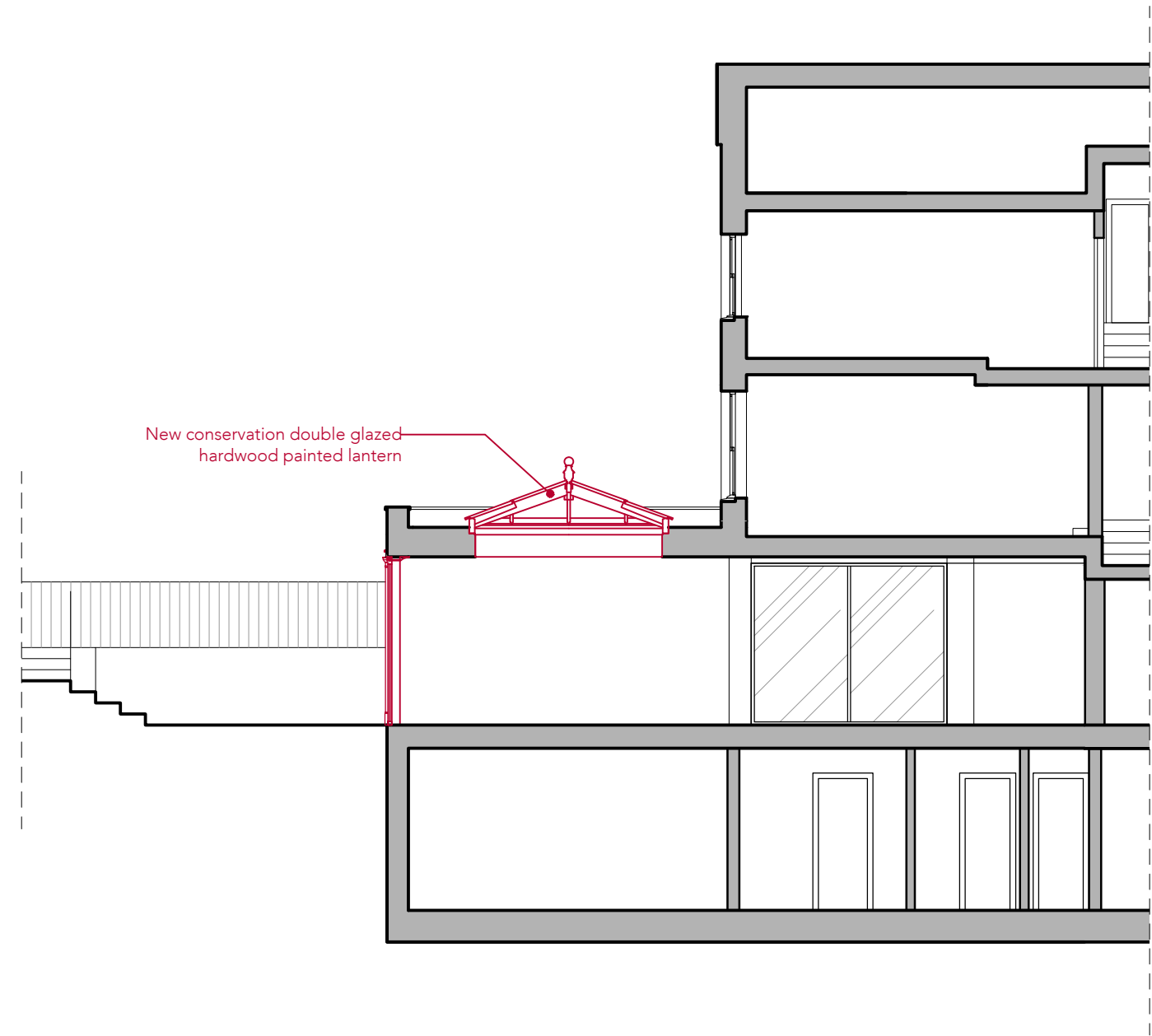
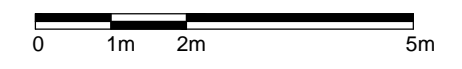


NOTE
 DO NOT SCALE FROM THIS DRAWING, EXCEPT FOR TOWN PLANNING PURPOSES.
 THIS DRAWING IS THE PROPERTY OF TG STUDIO AND COPYRIGHT IS RESERVED BY THEM.
 THIS DRAWING IS ISSUED ON CONDITION THAT IT IS NOT REPRODUCED, USED OR DISCLOSED BY
 OR TO ANY UNAUTHORIZED PERSON WITHOUT THE PRIOR CONSENT OF TG STUDIO.
 THE AREAS ON THIS DRAWING HAVE BEEN CALCULATED FROM A CAD DRAWING AND HAVE NO
 TOLERANCES ADDED OR SUBTRACTED.

REVISIONS - PLANNING SUBMISSION DATE 17.11.2020



New conservation double glazed
 hardwood painted lantern



STUDIO
 Architecture & Interior Design

10 RATHBONE PLACE, LONDON W1T 1HP T 020 7636 3838 F 020 7636 5659 WWW.TG-STUDIO.CO.UK

PROJECT
 36 FERNCROFT AVENUE
 LONDON NW3 7PE

DRAWING
 PROPOSED PART SECTION AA'

DATE 17.11.2020 DRAWN BY GM CHECKED BY TG

STATUS PLANNING SCALE @ A3 1:100

JOB NO. 239 DWG NO. P-320 REV -

1 PROPOSED PART SECTION AA'
 scale 1:100