

# **Regent's Place Phase 2 Landscaping**

Application: 2019/5154/P

## **Submitted in discharge of condition 8**

Prior to the commencement of the relevant part, details of the lighting strategy (including details of the type, specification and location of lighting) shall be submitted to and approved in writing by the local planning authority.

## **Details of Lighting Design**



For continuation please refer to drg. 265810-ARUP-01-GR-DR-EX-63320

For continuation please refer to drg. 265810-ARUP-04-GR-DR-EX-63323

- FIGURED DIMENSIONS ONLY TO BE USED**
- Safety, Health and Environmental Information**  
In addition to the hazards/risks normally associated with the types of work detailed on this drawing and noted in the designer risk assessments and health and safety plan, note the following:
- It is assumed that all works on this drawing will be carried out by a competent contractor working, where appropriate, to an agreed method statement.
  - Where applicable, significant residual risks are highlighted in the body of the drawing.
  - Drawings are derived from original design information, not As-Built. Contractor to survey as necessary and verify existing building dimensions.
  - The Contractor shall notify the Client of any discrepancies found on site regarding the assumed layout, details and condition of the existing construction, compared to that described in the Arup Associates design documentation.

- Notes:**
- This drawing shall be read in conjunction with all Stage 3 information including other drawings and specifications by Arup and other consultants. Where inconsistencies exist between documents, the more onerous document will prevail.
  - Refer to Lighting Appendix in Employer's Requirement Document for details of lighting installation.
  - The number, size and routing of ducts to be developed and coordinated with finishes depths and location of lighting and power points served.
  - Distribution boxes shall be provided for luminaires located within planters to allow junction from supply cable to the luminaire. After all connections are made in the distribution box and testing completed it shall be filled with resin/gel and sealed.
  - Suitable cables for J10 to be provided and fixed on catenary wire at high level.
  - Location for lighting column J10a are indicative. Refer to TLA drawing for J10a's final location.

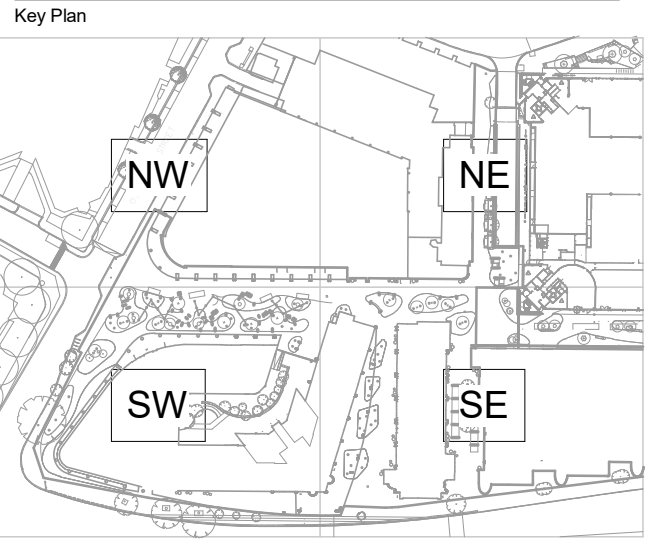
T03	08/11/19	YZ	AB	KF
Stage 3 - Tender Issue				
T02	25/10/19	YZ	AB	KF
Stage 3 - Tender Issue				
T01	23/08/19	YZ	AB	KF
Stage 3 - Tender Issue				
Rev	Date	By	Chkd	Appd

ARUP

13 Fench Street  
London W1T 4EQ  
Tel +44(0)20 7636 1531 Fax +44(0)20 7580 3924  
www.arup.com

Client  
British Land

Project Title  
Regent's Place Landscape Phase 2



Drawing Title  
Electrical Services  
Lighting  
Ground  
NE Layout

Scale of A0  
1 : 100

Role  
Electrical Services

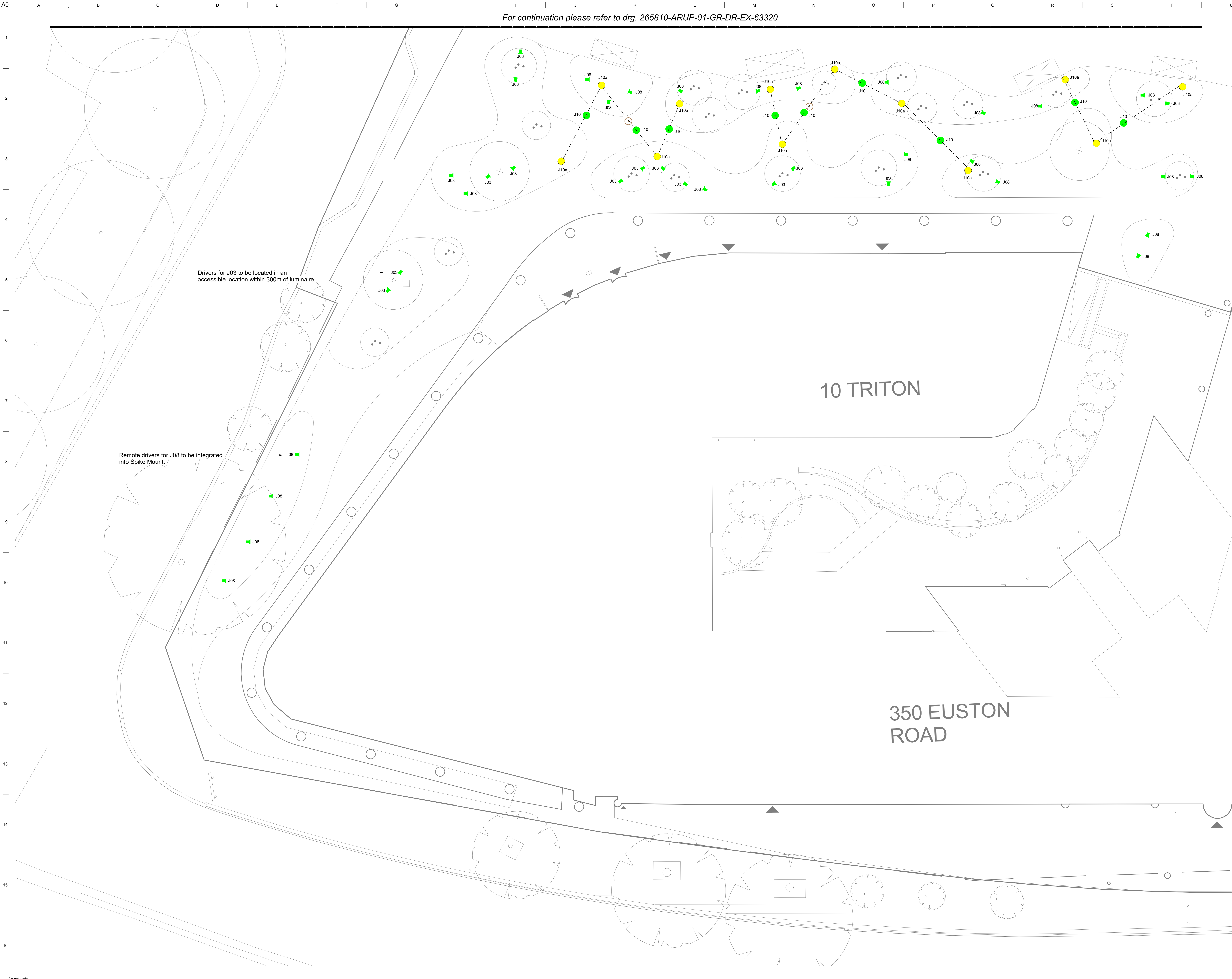
Subsidiary  
Tender

Arup Job No  
265810

Rev  
T03

Name  
265810-ARP-02-GF-DR-EX-63321





Do not scale

For continuation please refer to drg. 265810-ARUP-01-GR-DR-EX-63320

For continuation please refer to drg. 265810-ARUP-04-GR-DR-EX-63323

- FIGURED DIMENSIONS ONLY TO BE USED
- Safety, Health and Environmental Information
- In addition to the hazards/risks normally associated with the types of work detailed on this drawing and noted in the designer risk assessments and health and safety plan, note the following:
- It is assumed that all works on this drawing will be carried out by a competent contractor working, where appropriate, to an agreed method statement.
  - Where applicable, significant residual risks are highlighted in the body of the drawing.
  - Drawings are derived from original design information, not As-Built. Contractor to survey as necessary and verify existing building dimensions.
  - The Contractor shall notify the Client of any discrepancies found on site regarding the assumed layout, details and condition of the existing construction, compared to that described in the Arup Associates design documentation.

- Notes:
- This drawing shall be read in conjunction with all Stage 3 information including other drawings and specifications by Arup and other consultants. Where inconsistencies exist between documents, the more onerous document will prevail.
  - Refer to Lighting Appendix in Employer's Requirement Document for details of lighting installation.
  - The number, size and routing of ducts to be developed and coordinated with finishes depths and location of lighting and power points served.
  - Distribution boxes shall be provided for luminaires located within planters to allow junction from supply cable to the luminaire. After all connections are made in the distribution box and testing completed it shall be filled with resin/epoxy and sealed.
  - Suitable cables for J10 to be provided and fixed on catenary wire at high level.
  - Location for lighting column J10a are indicative. Refer to TLA drawing for J10a's final location.

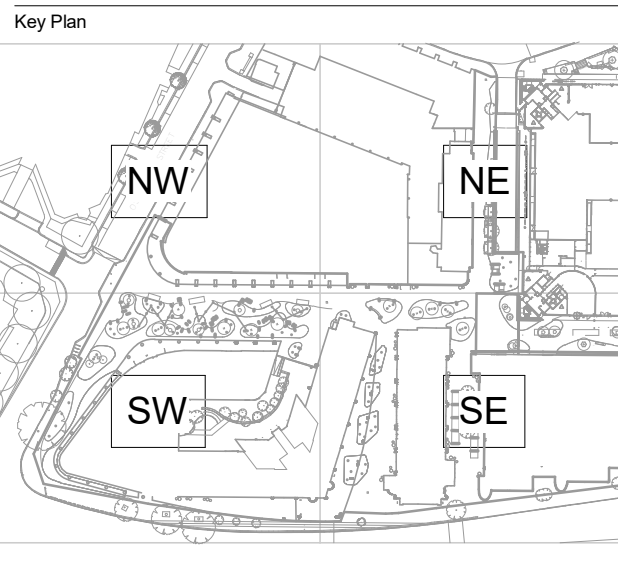
T03	08/11/19	YZ	AB	KF
Stage 3 - Tender Issue				
T02	25/10/19	YZ	AB	KF
Stage 3 - Tender Issue				
T01	23/08/19	YZ	AB	KF
Stage 3 - Tender Issue				
Rev	Date	By	Chkd	Appd

ARUP

13 Fenchurch Street  
London EC3A 3BS  
Tel +44(0)20 7836 1531 Fax +44(0)20 7580 3924  
www.arup.com

Client  
British Land

Project Title  
Regent's Place Landscape Phase 2



Drawing Title  
Electrical Services  
Lighting  
Ground  
SW Layout

Scale at A0  
1 : 100

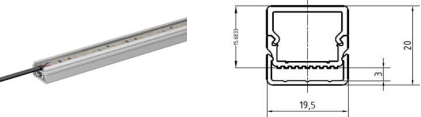
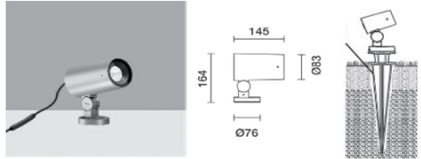

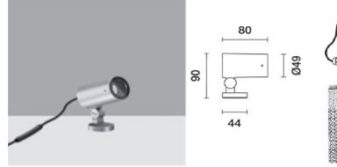

Role  
Electrical Services  
Subsidiary  
Tender


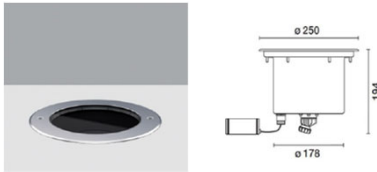
Arup Job No  
265810  
Name  
265810-ARP-03-GR-DR-EX-63322

Rev  
T03





Luminaire Reference	Description	Manufacturer	Product Reference	Colour	Optic	Colour Rendering	Colour Temperature	Dimming	Watt	Output	IP Rating	IK Rating	Driver	Image	Location	Notes
J02	IP rated Linear Surface mounted LED	LEDlinear	Linear FX 5 with diffuse lens	N/A	Diffuse	> 80	3,000K	DALI	15W/M	750 lm	IP67	N/A	Remote		Integrated in benches	Order with High Square opal diffuser, mounting bracket and end caps.
J03	Adjustable Spike mounted spotlight (Medium)	iGuzzini	Pakco InOut Q728	RAL colour to be confirmed by Architect	Wide 40 degree	> 80	3,000K	DALI	12W	1343 lm	IP66	IK07	Remote		Lighting to large shrubs and trees throughout planters Tree mounted moonlighting	Luminaire to be supplied complete with spikes, anti-glare cowl, softening lens and honeycombe louver. Spike to be cast-in concrete for stability and securely held in place within planter.
J06	Multi-Stem Bollard (3)	Vibia	Brisa 4635	RAL 8014. Finish to be confirmed by Architect	Diffuse	> 80	3,000K	DALI	3W	232 lm	IP65	TBC	Remote		Planters	Finish to be confirmed by Architect.
J08	Adjustable Spike mounted spotlight (Small)	iGuzzini	Pakco InOut Q692	RAL colour to be confirmed by Architect	Medium 24 degree	> 80	3,000K	DALI	6W	455lm	IP66	IK07	Remote		Planters throughout	Luminaire to be supplied complete with spikes, anti-glare cowl, softening lens and honeycombe louver. Spike to be cast-in concrete for stability and securely held in place within planter.
J10	Column mounted catenary lantern	Zero	Brass	All metal parts above the shade to be in powdered coated in dark grey. Finish to be confirmed by Architect	Wide beam	>80	3,000K	DALI	32W	1800 lm	IP54	TBC	Integral		Osnaburgh Place	Clear glass lens at the bottom of the luminaire needs to be frosted or with diffuse finish to soften the harsh edge of the light beam effect when projected on ground. The overlap of the mesh within the lantern shall be improved to minimise the prominent detail. Mock up on site to be carried out by contractor and to be reviewed and to be approved by design team prior to order.

Luminaire Reference	Description	Manufacturer	Product Reference	Colour	Optic	Colour Rendering	Colour Temperature	Dimming	Watt	Output	IP Rating	IK Rating	Driver	Image	Location	Notes
J10a	6m tall Lighting Columns	Aubrillum	Dome XL	RAL	N/A	N/A	N/A	N/A	N/A	N/A	TBC	TBC	N/A		Osnaburgh Place	To be supplied complete with base plate and all necessary brackets and attachments to enable catenary lighting (Type J10) to be installed and supported. If column access door required on the column, exact location to be coordinated. Lighting column foundations shall be designed according with the manufacturers columns data for the location, soil type and windage of the installed lighting equipment. The Contractor shall liaise with manufacturer to coordinate a neat mounting detail of Luminaire Type J10 appropriate for the column.
J11	Inground uplight	iGuzzini	Light up		Flood 28 degree	> 80	3,000K	DALI	15.8W	1516 lm	IP68	IK10	Adjacent		Link Road Trees	Luminaire to be supplied complete with drivers, mounting blockout. Luminaire shall have anti-slip coating