

# Google KGX1

KGX1 KGX1 Redesign Proposal of  
Ground Plane East Elevation

KXC-A-001-A-BDP-XX-RP626



Revision: P01  
24th June 2020  
P2007133

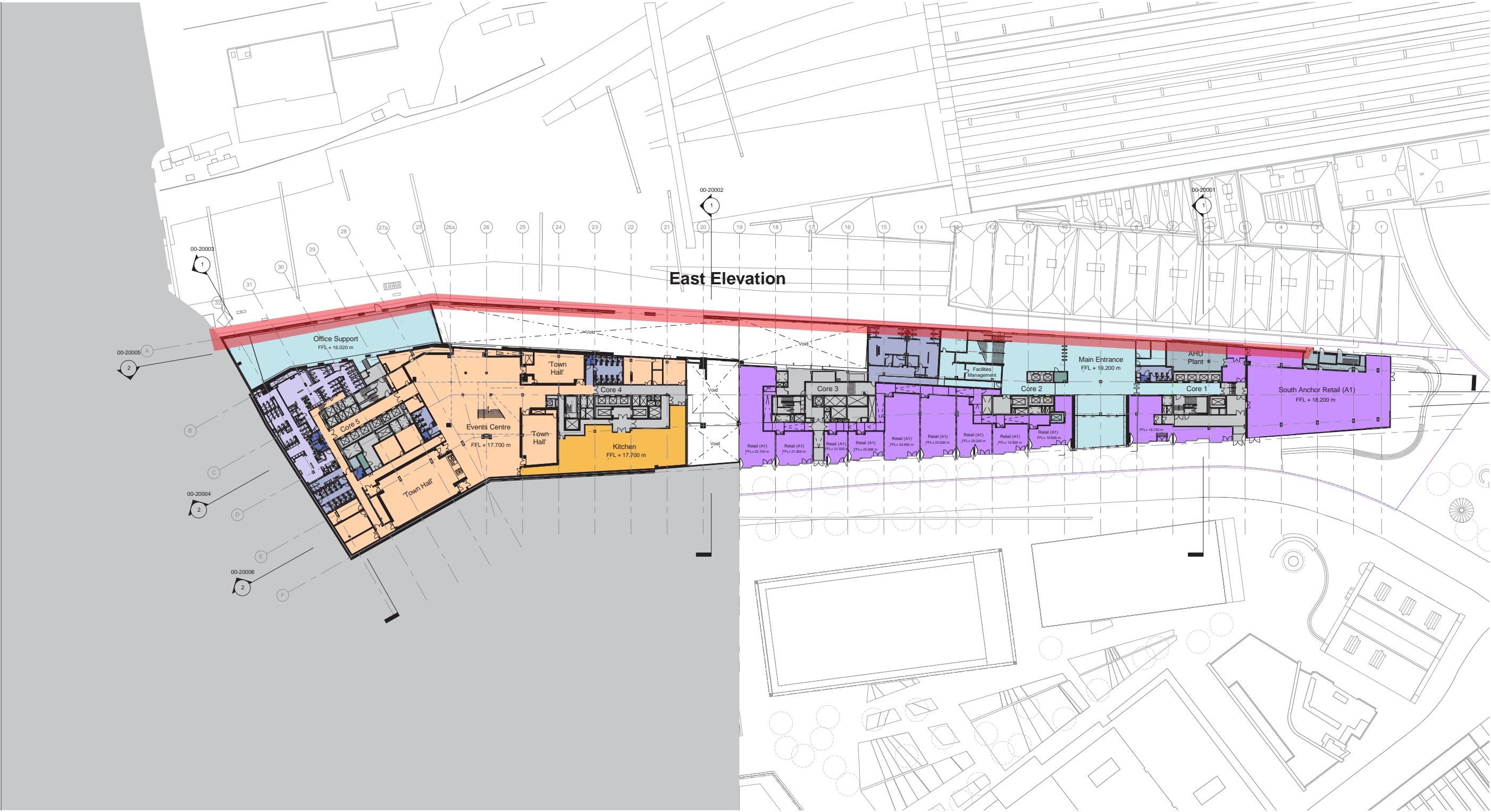
**BDP.**

Current Layout - Ground Plane

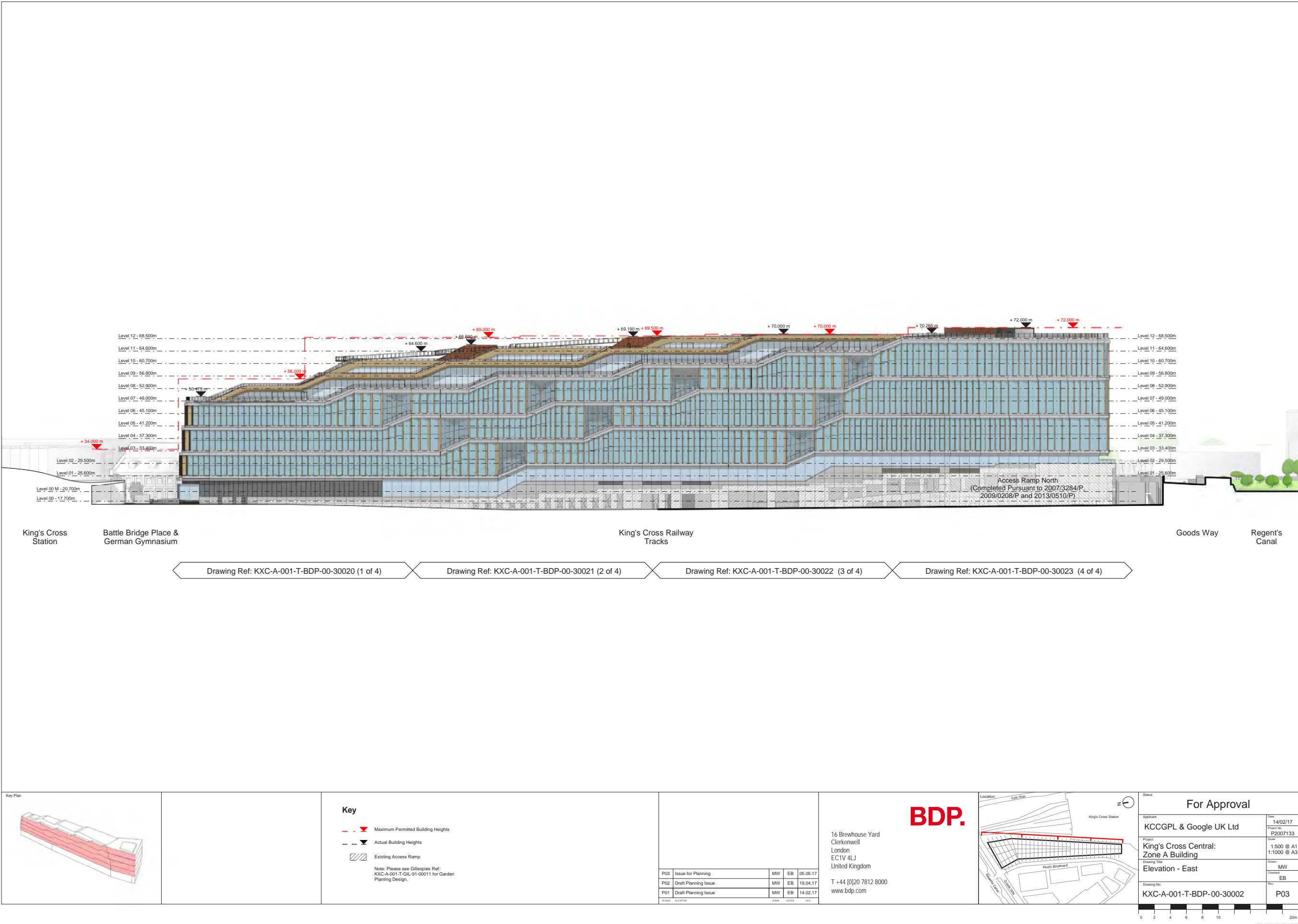
Retail Areas

LEGEND

Redesign proposal to ground plane East Elevation

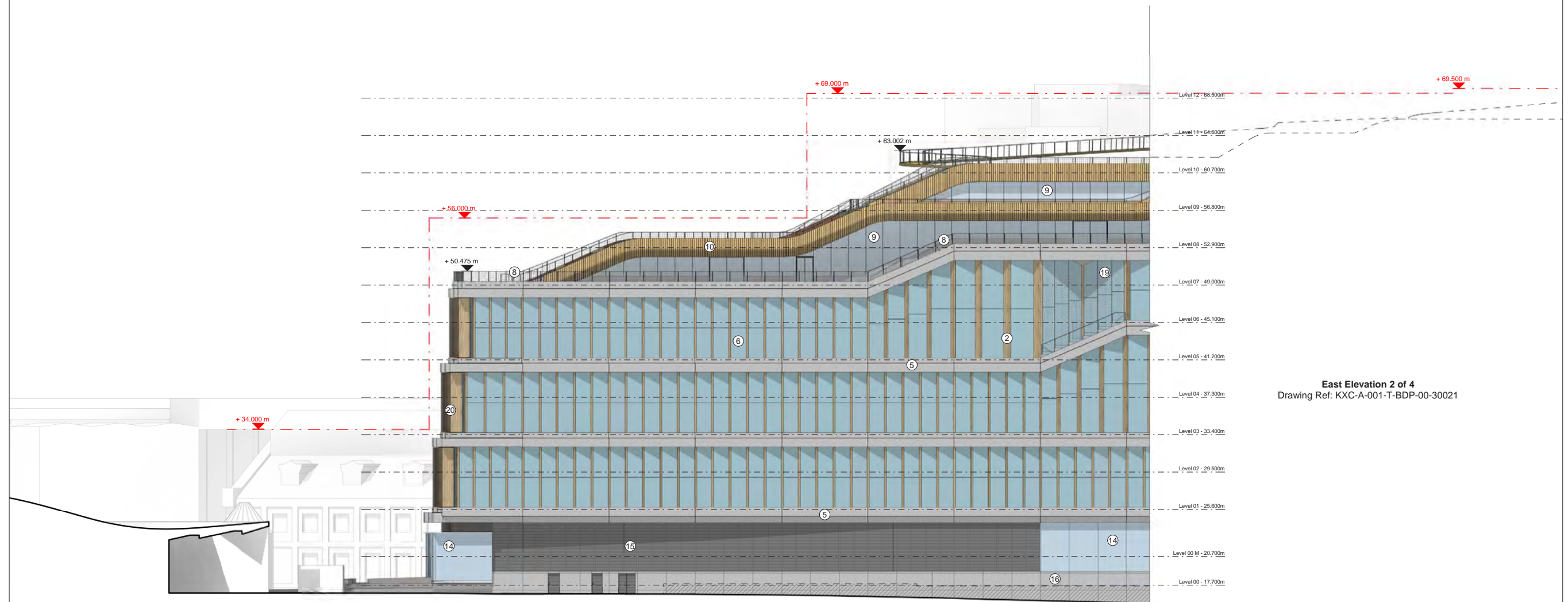


Existing Design - Planning Drawing of East Elevation





**East Elevation 2 of 4**  
Drawing Ref: KXC-A-001-T-BDP-00-30021



King's Cross  
Station

Battle Bridge  
Place

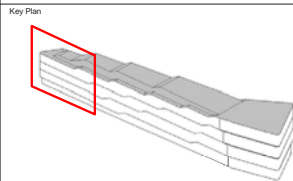
German  
Gymnasium

South Anchor




Existing Services Riser Access

Shared Service Yard / Access Ramp

King's Cross  
Railway Tracks



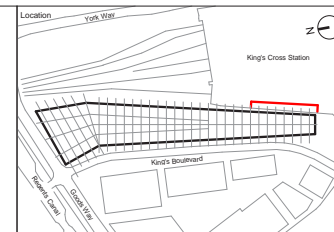
### Key

- | 1  | Key  | 13 | Steel Balustrade with Glass Panels | D4  | Garden Maintenance Door            |
|----|--|----|------------------------------------|---|------------------------------------|
| 2  | Steel Mullion  | 14 | Ground Facade Glazing Panel        | D5  | Garden Accessible Door             |
| 3  | Timber Mullion   | 15 | Dark Grey Metal Louvre Screen      | D6  | Dark Grey Painted Glass Door       |
| 4  | Black Painted Metal Structure <td>16</td> <th>Glass Reinforced Concrete Cladding</th> <th>D7</th> <th>Weathering Steel Glass Door</th> | 16 | Glass Reinforced Concrete Cladding | D7  | Weathering Steel Glass Door        |
| 5  | Black Metal Cladding   | 17 | Dark Grey Expanded Metal Mesh      |   |                                    |
| 6  | Pre-cast Concrete Spandrel   | 18 | Bronze Metal Cladding Shop Front   |  | Maximum Permitted Building Heights |
| 7  | Main Facade Glazing Panel  | 19 | Webnet Wire Mesh Panels            |  | Actual Building Heights            |
| 8  | Painted Dark Grey Glass Panel  | 20 | Operable Timber Mullion            |  | Existing Access Ramp               |
| 9  | Steel Balustrade with Webnet Wire Mesh Panels  | 21 | Dark Grey Metal Shop Front Divider |   |                                    |
| 10 | Roof Facade Glazing Panel  | 22 | Bronze Metal Cladding Louvre       |   |                                    |
| 11 | Timber Wall Cladding   | D1 | Glass Sliding Door                 |   |                                    |
| 12 | Glass Reinforced Concrete Panel  | D2 | Dark Grey Metal Louvre Screen      |   |                                    |
|    | Weathering Steel Cladding  | D3 | Glass Hinged Door                  |   |                                    |

P03	Issue for Planning	MW	EB	05.05.19
P02	Draft Planning Issue	MW	EB	19.04.19
P01	Draft Planning Issue	MW	EB	14.02.19

16 Brewhouse Yard  
Clerkenwell  
London  
EC1V 4LJ  
United Kingdom  
  
T +44 [0]20 7812 8000  
[www.bdp.com](http://www.bdp.com)

# BDP.

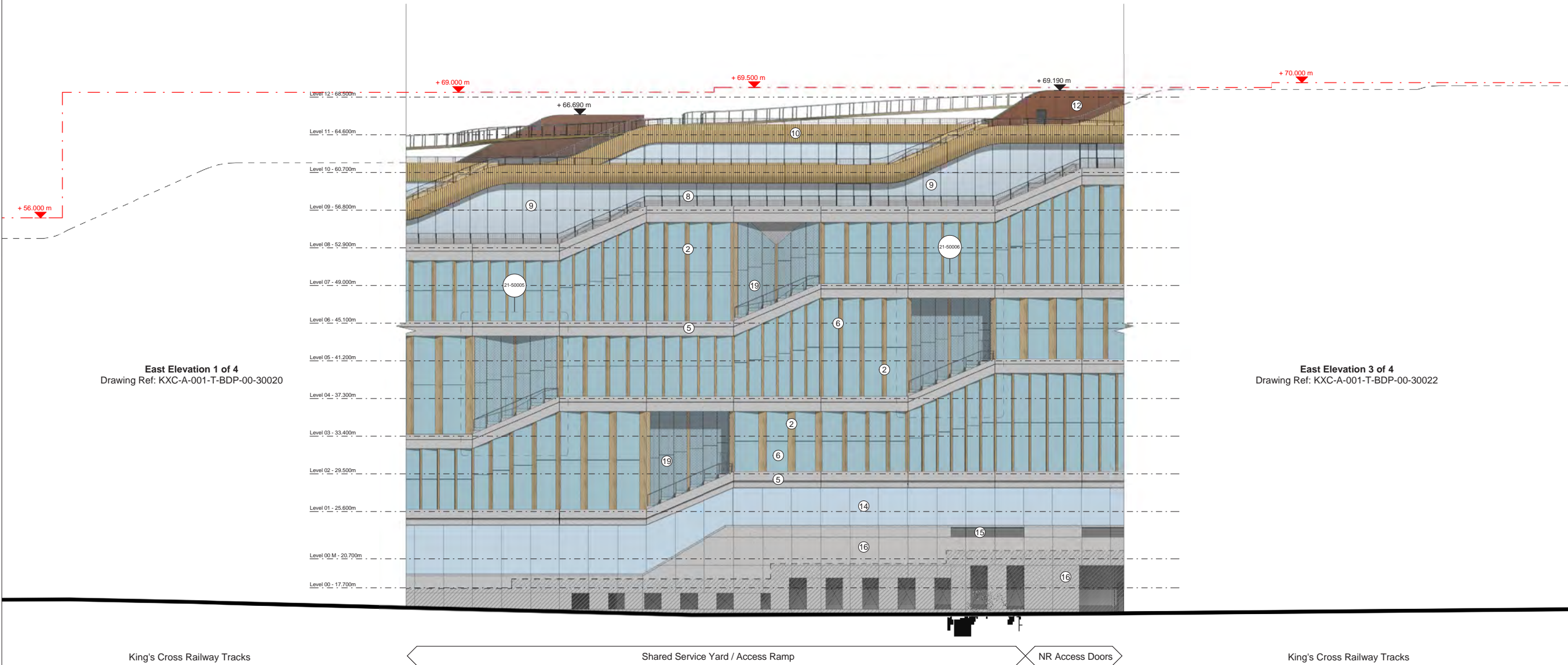


For Approval

Applicant	Date:
KCCGPL & Google UK Ltd	14/02/17
Project	Project No:
King's Cross Central: Zone A Building	P2007133
	Survey:
	1:200 @ A1 1:400 @ A3
Drawing Title	Drawn:
East Elevation - 1 of 4	MW
	Checked:
	EB
Drawing No.	Rev:
KXC-A-001-T-BDP-00-30020	P03



Existing Design - Planning Drawing of East Elevation



Key Plan

**Key**

1 Steel Mullion	13 Steel Balustrade with Glass Panels	D4 Garden Maintenance Door
2 Timber Mullion	14 Ground Facade Glazing Panel	D5 Garden Accessible Door
3 Black Painted Metal Structure	15 Dark Grey Metal Louvre Screen	D6 Dark Grey Back Painted Glass Door
4 Black Metal Cladding	16 Glass Reinforced Concrete Cladding	D7 Weathering Steel Door
5 Pre-cast Concrete Spandrel	17 Dark Grey Expanded Metal Mesh	
6 Main Facade Glazing Panel	18 Bronze Metal Cladding Shop Front Portal	
7 Back Painted Dark Grey Glass Panel	19 Webnet Wire Mesh Panels	
8 Steel Balustrade with Webnet Wire Mesh Panels	20 Operable Timber Mullion	
9 Roof Facade Glazing Panel	21 Dark Grey Metal Shop Front Divider	
10 Timber Wall Cladding	D1 Glass Sliding Door	
11 Glass Reinforced Concrete Panel	D2 Dark Grey Metal Louvre Door	
12 Weathering Steel Cladding	D3 Glass Hinged Door	

13 Steel Balustrade with Glass Panels

14 Ground Facade Glazing Panel

15 Dark Grey Metal Louvre Screen

16 Glass Reinforced Concrete Cladding

17 Dark Grey Expanded Metal Mesh

18 Bronze Metal Cladding Shop Front Portal

19 Webnet Wire Mesh Panels

20 Operable Timber Mullion

21 Dark Grey Metal Shop Front Divider

D1 Glass Sliding Door

D2 Dark Grey Metal Louvre Door

D3 Glass Hinged Door

D4 Garden Maintenance Door

D5 Garden Accessible Door

D6 Dark Grey Back Painted Glass Door

D7 Weathering Steel Door

Maximum Permitted Building Heights

Actual Building Heights

Existing Access Ramp

16 Brewhouse Yard  
Clerkenwell  
London  
EC1V 4LJ  
United Kingdom

T +44 (0)20 7812 8000  
www.bdp.com

**BDP.**

Location

Status

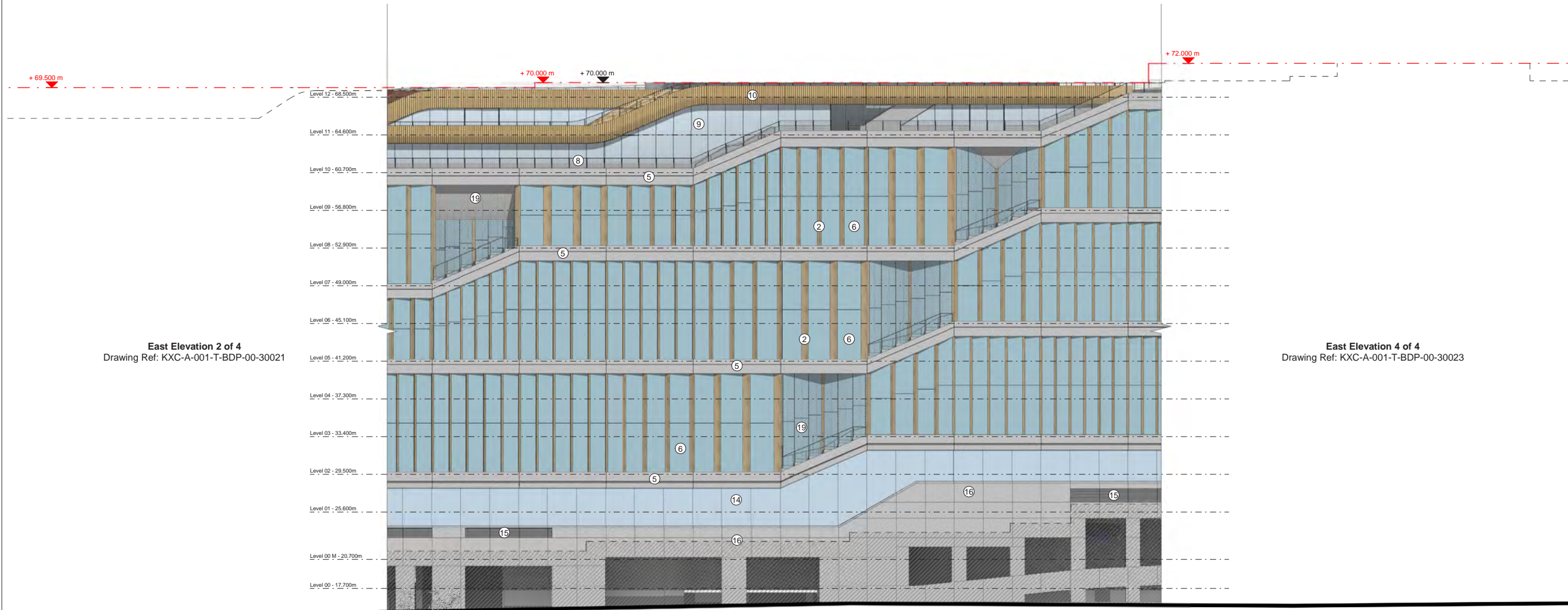
**For Approval**

Applicant	KCCGPL & Google UK Ltd	Date	14/02/17
Project	King's Cross Central: Zone A Building	Project No.	P2007133
Drawing Title	East Elevation - 2 of 4	Scale	1:200 @ A1 1:400 @ A3
Drawing No.	KXC-A-001-T-BDP-00-30021	Drawn	MW
		Checked	EB
		Rev	P03

0 2 4 6 8 10 20m



Existing Design - Planning Drawing of East Elevation

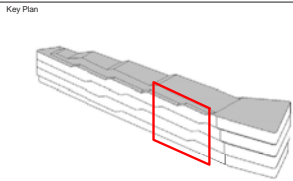


King's Cross Railway Tracks

NR Access Doors

Shared Service Yard / Access Ramp

King's Cross Railway Tracks

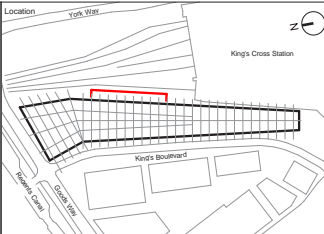


- Key**
- |   |  |                                      |
|---|--|--------------------------------------|
| 1 Steel Mullion                                 | 13 Steel Balustrade with Glass Panels      | D4 Garden Maintenance Door           |
| 2 Timber Mullion                                | 14 Ground Facade Glazing Panel             | D5 Garden Accessible Door            |
| 3 Black Painted Metal Structure                 | 15 Dark Grey Metal Louvre Screen           | D6 Dark Grey Back Painted Glass Door |
| 4 Black Metal Cladding                          | 16 Glass Reinforced Concrete Cladding      | D7 Weathering Steel Door             |
| 5 Pre-cast Concrete Spandrel                    | 17 Dark Grey Expanded Metal Mesh           |                                      |
| 6 Main Facade Glazing Panel                     | 18 Bronze Metal Cladding Shop Front Portal |                                      |
| 7 Back Painted Dark Grey Glass Panel            | 19 Webnet Wire Mesh Panels                 |                                      |
| 8 Steel Balustrade with Webnet Wire Mesh Panels | 20 Operable Timber Mullion                 |                                      |
| 9 Roof Facade Glazing Panel                     | 21 Dark Grey Metal Shop Front Divider      |                                      |
| 10 Timber Wall Cladding                         | D1 Glass Sliding Door                      |                                      |
| 11 Glass Reinforced Concrete Panel              | D2 Dark Grey Metal Louvre Door             |                                      |
| 12 Weathering Steel Cladding                    | D3 Glass Hinged Door                       |                                      |
- Maximum Permitted Building Heights  
--- Actual Building Heights  
Existing Access Ramp

P03	Issue for Planning	MW	EB	05.05.17
P02	Draft Planning Issue	MW	EB	19.04.17
P01	Draft Planning Issue	MW	EB	14.02.17

16 Brewhouse Yard  
Clerkenwell  
London  
EC1V 4LJ  
United Kingdom  
T +44 (0)20 7812 8000  
www.bdp.com

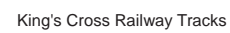
BDP.



For Approval			
Applicant	KCCGPL & Google UK Ltd		Date: 14/02/17
Project	King's Cross Central: Zone A Building		Project No: P2007133
Drawing Title	East Elevation - 3 of 4		Scale: 1:200 @ A1 1:400 @ A3
Drawing No.	KXC-A-001-T-BDP-00-30022		Drawn: MW Checked: EB Rev: P03

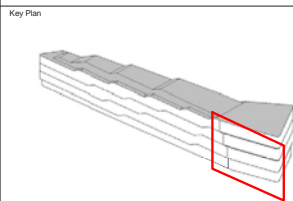


**East Elevation 3 of 4**  
Drawing Ref: KXC-A-001-T-BDP-00-30022



Shared Service Yard / Access Ramp

Goods Way

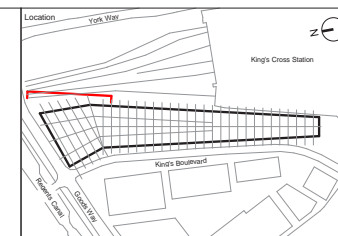


Key				
1	Steel Mullion	13	Steel Balustrade with Glass Panels	D4 Garden Maintenance Door
2	Timber Mullion	14	Ground Facade Glazing Panel	D5 Garden Accessible Door
3	Black Painted Metal Structure	15	Dark Grey Metal Louvre Screen	D6 Dark Grey Back Painted Glass Door
4	Black Metal Cladding	16	Glass Reinforced Concrete Cladding	D7 Weathering Steel Door
5	Pre-cast Concrete Spandrel	17	Bronze Metal Cladding Shop Front	
6	Main Facade Glazing Panel	18	Webnet Wire Mesh Panels	
7	Black Painted Dark Grey Portal	19	Operable Timber Mullion	
8	Steel Balustrade with Webnet Wire Mesh Panels	20	Dark Grey Metal Shop Front Divider	
9	Roof Facade Glazing Panel	21	Bronze Metal Cladding Mullion	
10	Timber Wall Cladding	22	Glass Sliding Door	
11	Glass Reinforced Concrete Panel	D1	Dark Grey Metal Louvre Door	
12	Weathering Steel Cladding	D3	Glass Hinged Door	

P03	Issue for Planning	MW	EB	05.05.1
P02	Draft Planning Issue	MW	EB	19.04.1
P01	Draft Planning Issue	MW	EB	14.02.1
ISSUE	DISCUSS	ISSUE	DISCUSS	ISSUE

16 Brewhouse Yard  
Clerkenwell  
London  
EC1V 4LJ  
United Kingdom  
  
T +44 [0]20 7812 8000  
[www.bdp.com](http://www.bdp.com)

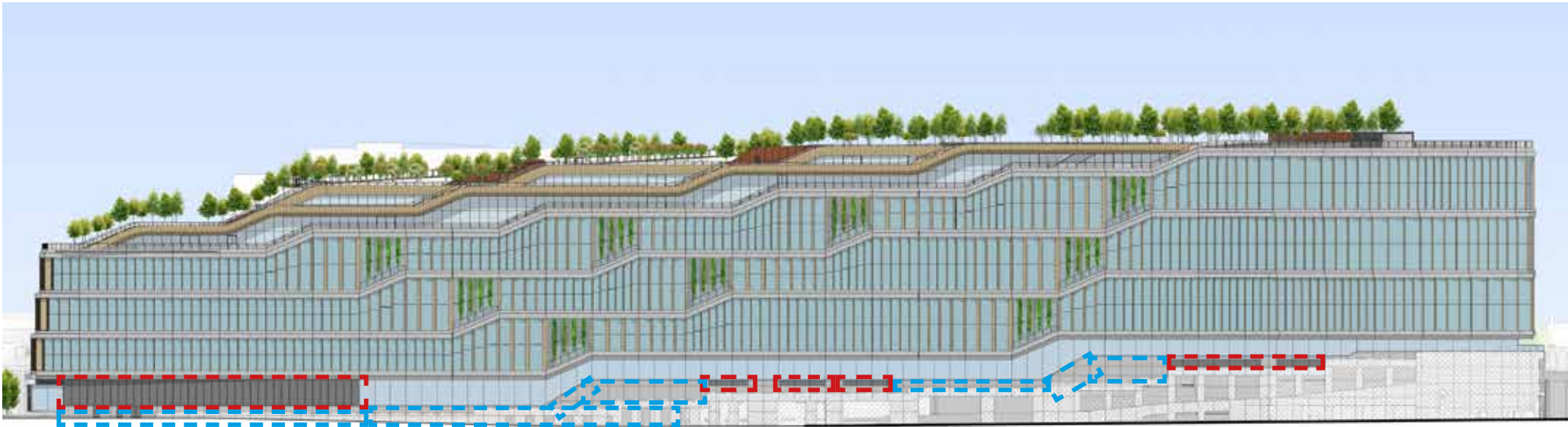
# BDP.



Status		For Approval	
Applicant	KCCGPL & Google UK Ltd	Date	14/02/17
		Version	P2007133
Project	King's Cross Central: Zone A Building	Scale	1:200 @ A1 1:400 @ A3
Drawing Title	East Elevation - 4 of 4	Drawn	MMW
		Checked	EB
Drawing No.	KXC-A-001-T-BDP-00-30023	Rev.	P03







East Elevation



North Elevation




- Key:
-  Metal Louvre Screen
  -  Glass Reinforced Concrete Cladding
  -  Access Ramp Entrance

Figure 96: East and North elevations of the building indicating where the metal louvre screen, panel cladding and access ramp entrance are located

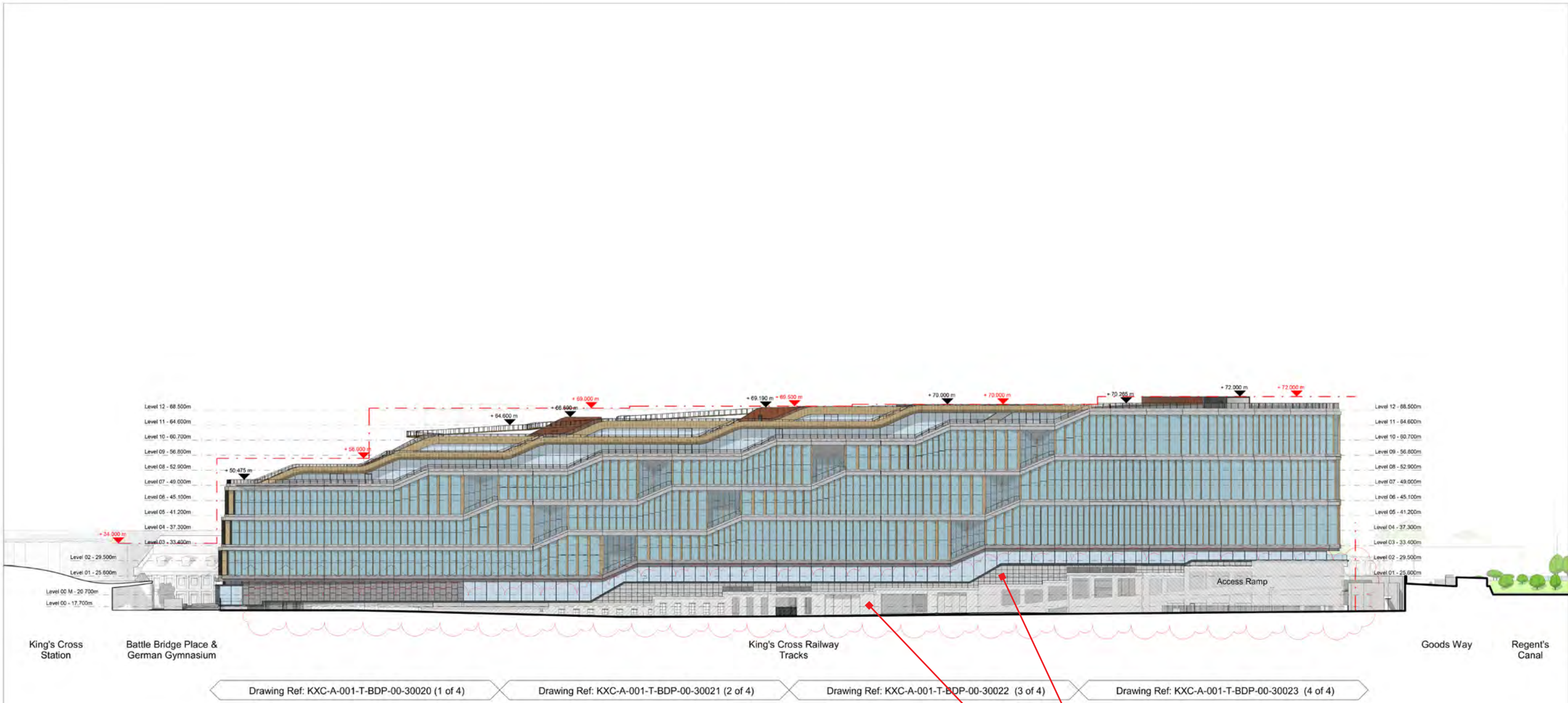


East Elevation Existing Proposal 3D View 1



Figure 80: Illustrative view of the proposed Zone  
A Building as seen on a King's Cross station platform





**Proposed change of material to GRC Rieder cladding and to be painted (Keim Paint)**

**Proposed change of material to painted concrete finish (Keim Paint)**

The above proposed elevation illustrates the proposal for changing the materials to the East elevation by painting the existing concrete and providing new GRC cladding above the existing structure. The overall GRC facade will be painted with Keim paint to provide a unified finish and colour.

Key Plan

Revision 13    Date 13

**Key**

- Maximum Permitted Building Heights
- Actual Building Heights
- Existing Access Ramp

Note: Please see Gillespies Ref: KXC-A-001-T-GIL-91-00011 for Garden Planning Design.

P05	Issue for Planning	HC	EB	15.05.17
P04	Issue for Planning	KC	EB	12.05.17
P03	Issue for Planning	MW	EB	05.05.17
P02	Draft Planning Issue	MW	EB	19.04.17
P01	Draft Planning Issue	MW	EB	14.02.17

**BDP.**

16 Brewhouse Yard  
Clerkenwell  
London  
EC1V 4LJ  
United Kingdom

T +44 (0)20 7812 8000  
www.bdp.com

Location: 1:500 @ A1  
1:1000 @ A3

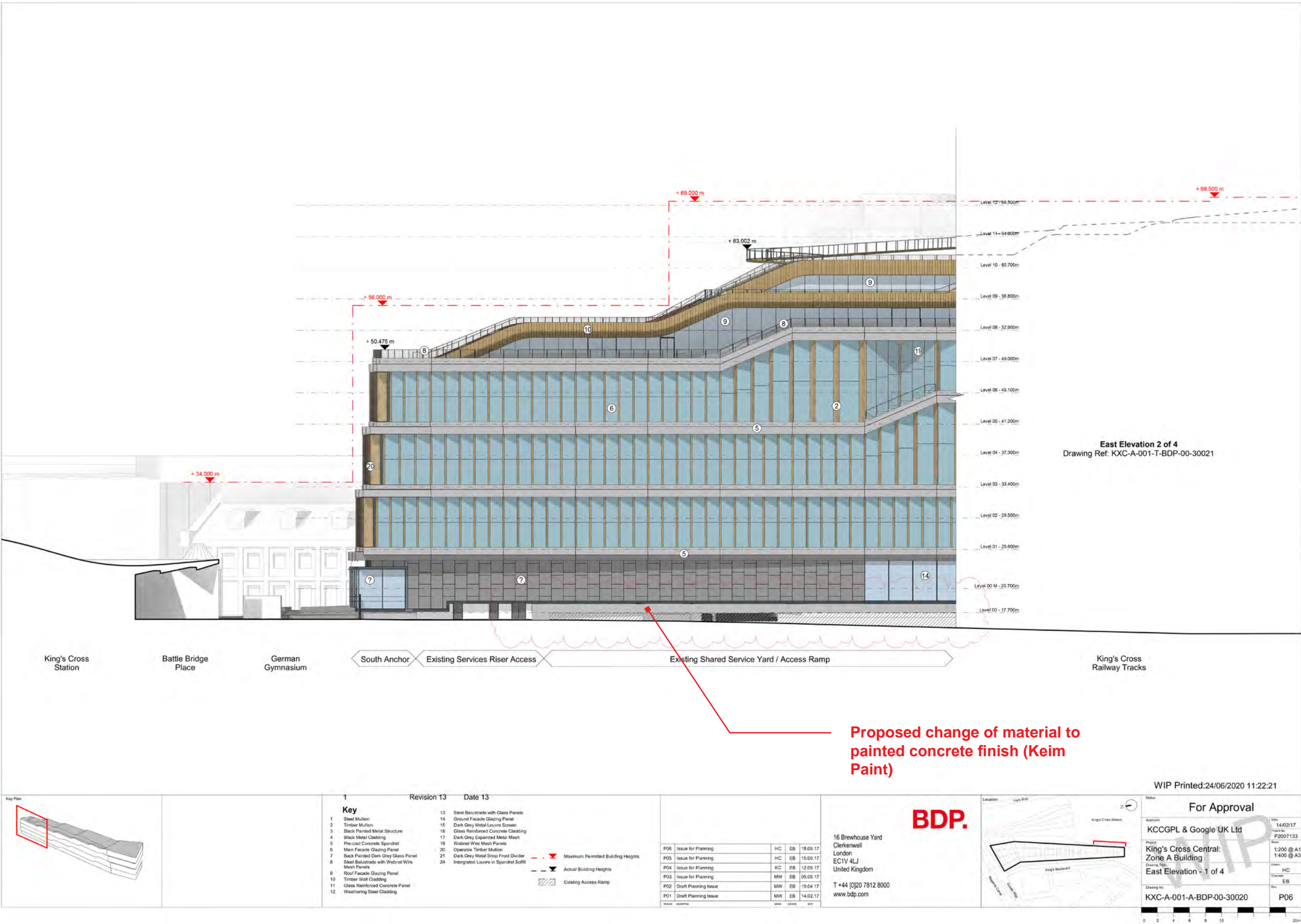
WIP Printed: 29/06/2020 17:36:36

**For Approval**

Applicant: KCCGGL & Google UK Ltd  
Project: King's Cross Central: Zone A Building  
Drawing Title: Elevation - East  
Drawing No: KXC-A-001-A-BDP-00-30002

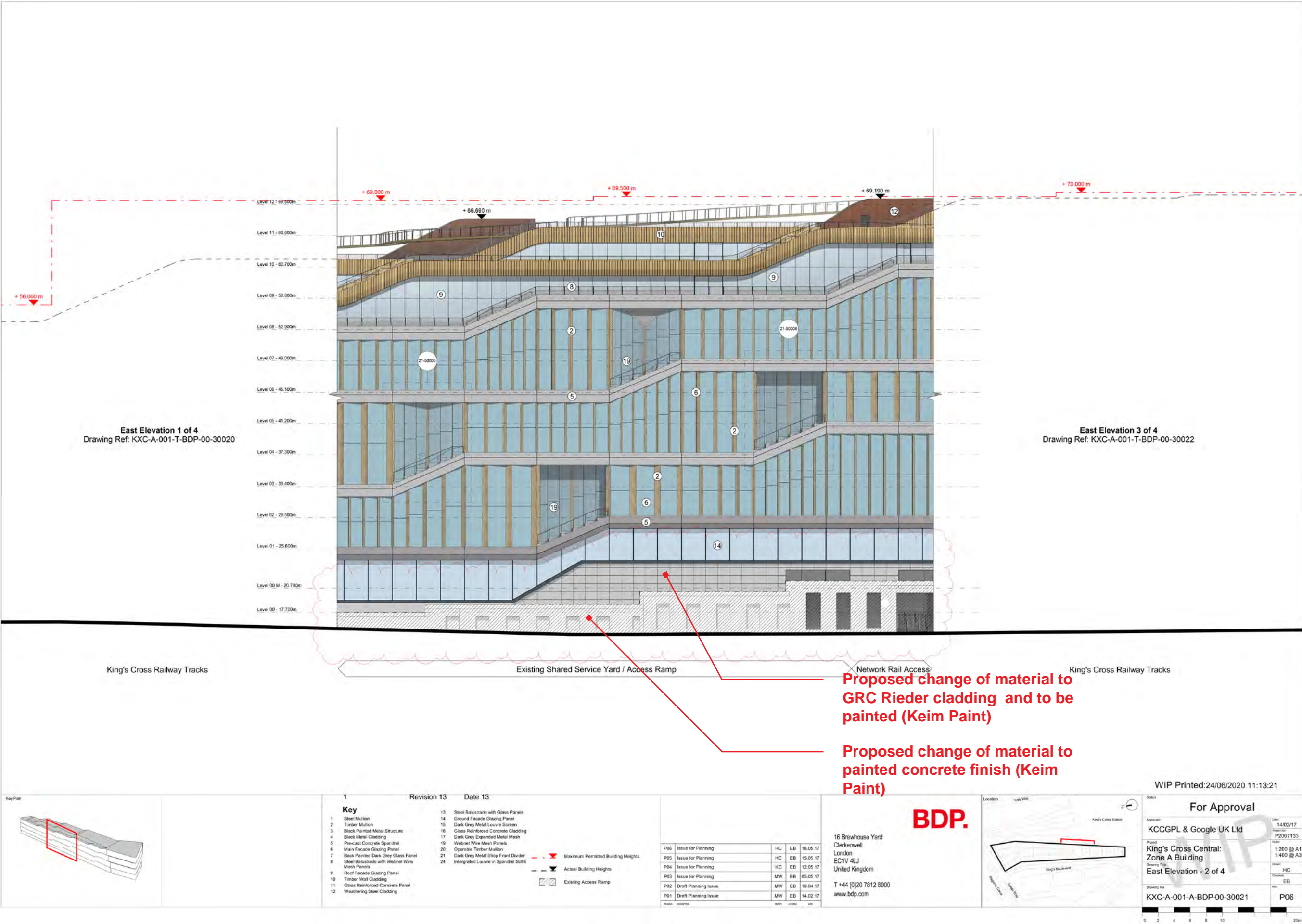
Date: 14/02/17  
Sheet No: P2007133  
Scale: 1:500 @ A1  
1:1000 @ A3  
Drawn: HC  
Checked: EB  
Rev: P05

Proposed Design - Planning Drawing of East Elevation



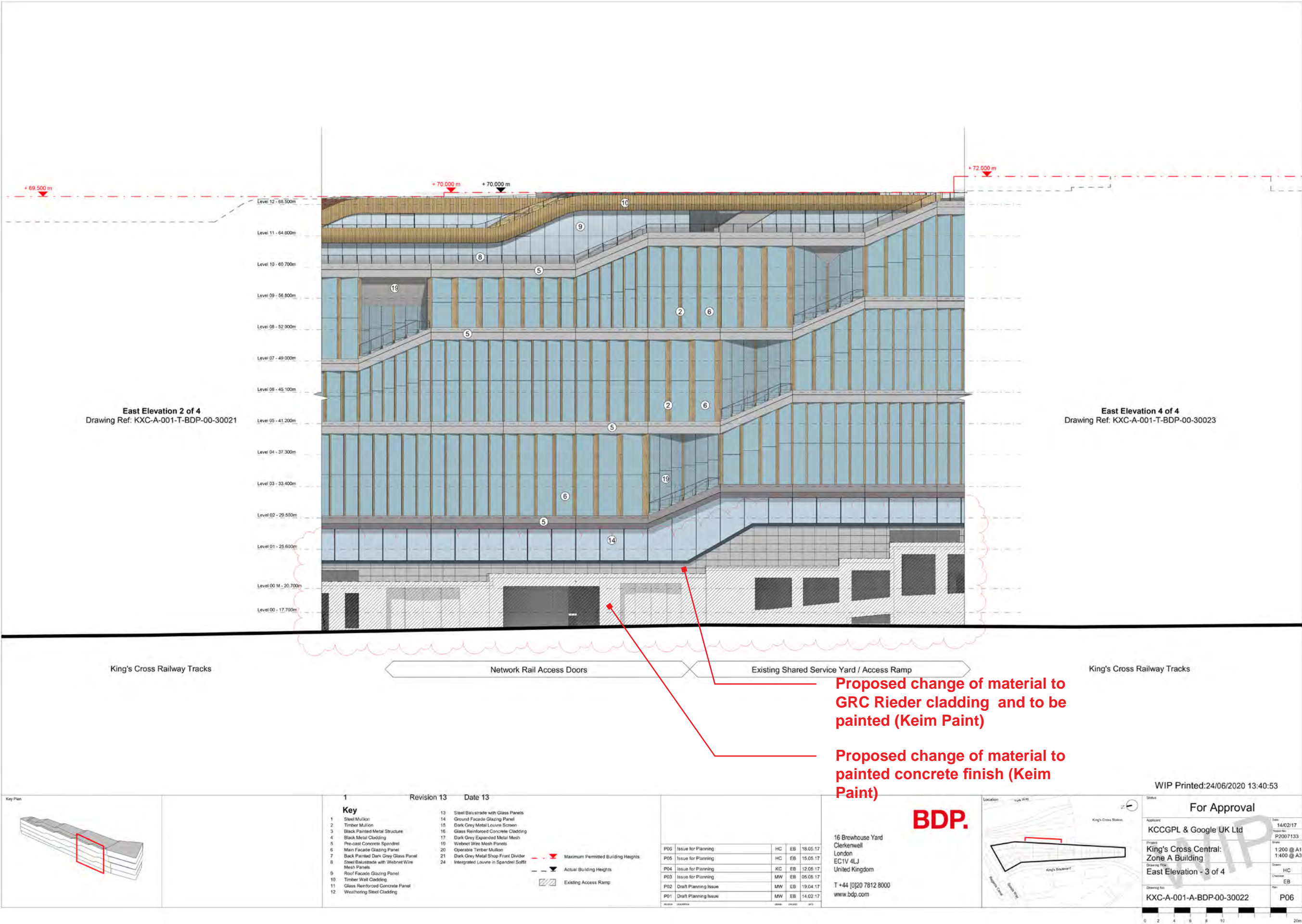


Proposed Design - Planning Drawing of East Elevation



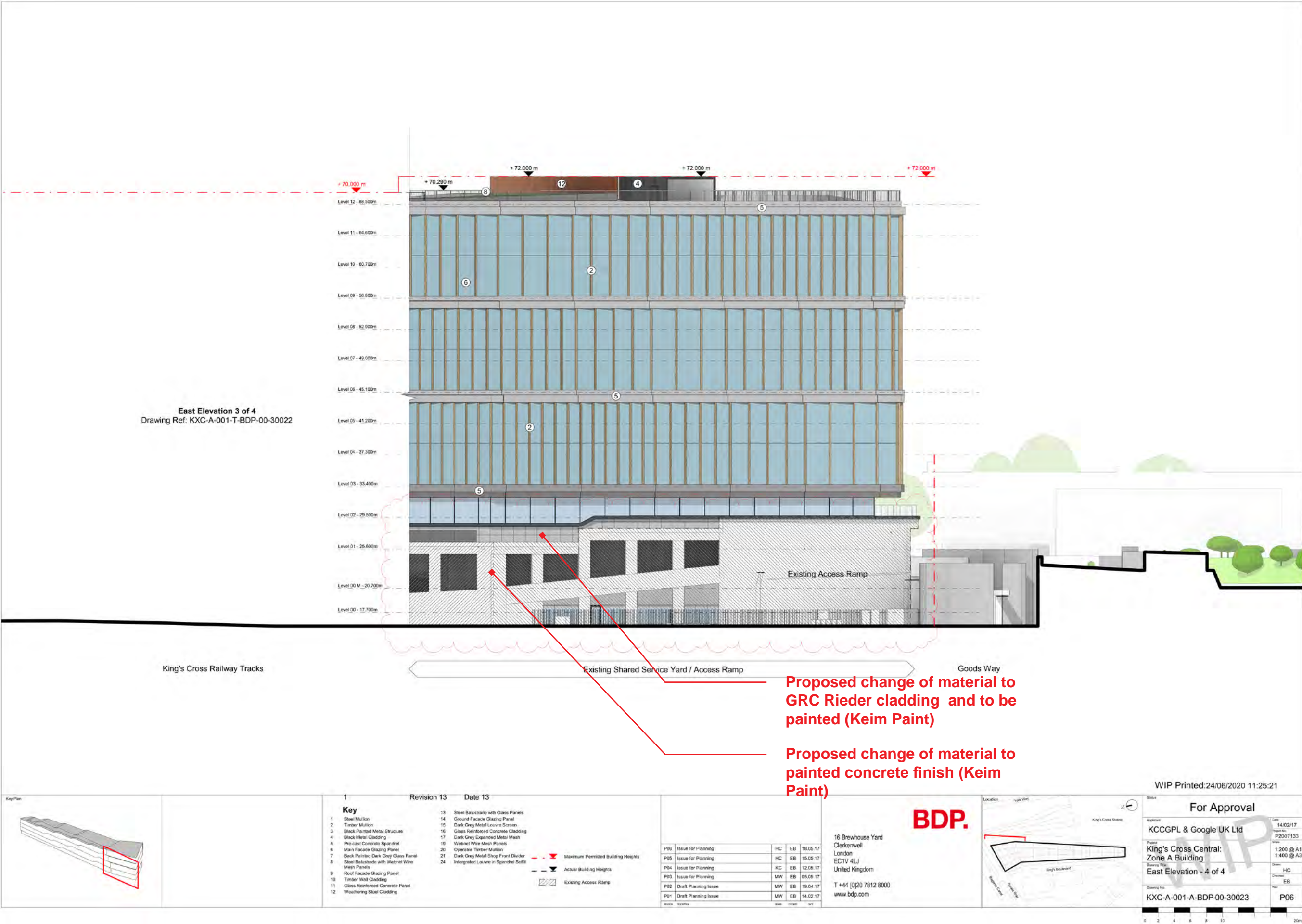


Proposed Design - Planning Drawing of East Elevation





Proposed Design - Planning Drawing of East Elevation



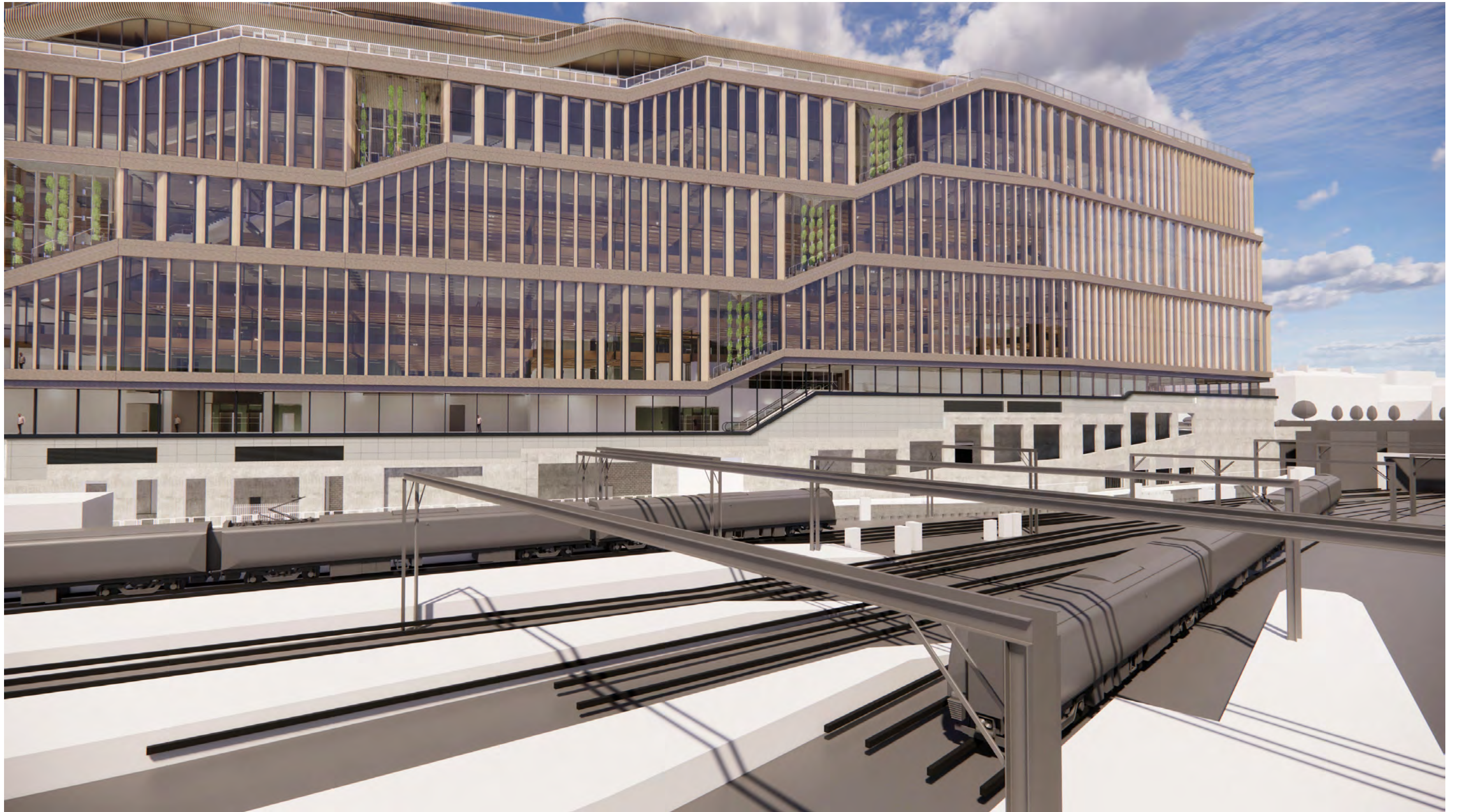


East Elevation Existing Proposal 3D View 1





**East Elevation Proposed 3D View 2**

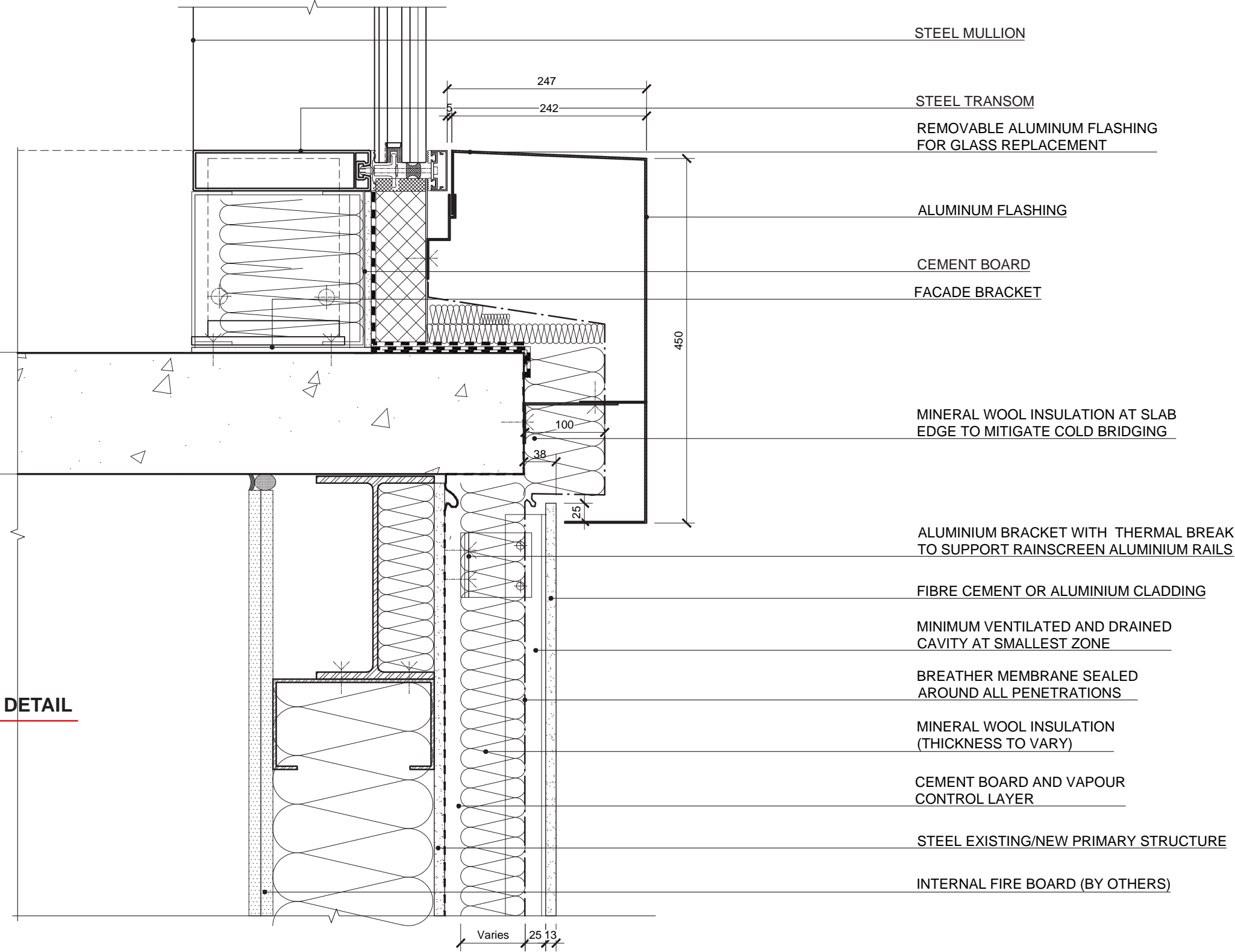






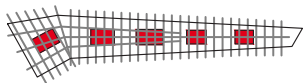
Typical Vertical Section Head Detail at Interface with Existing Primary Structure - East Elevation



DETAIL



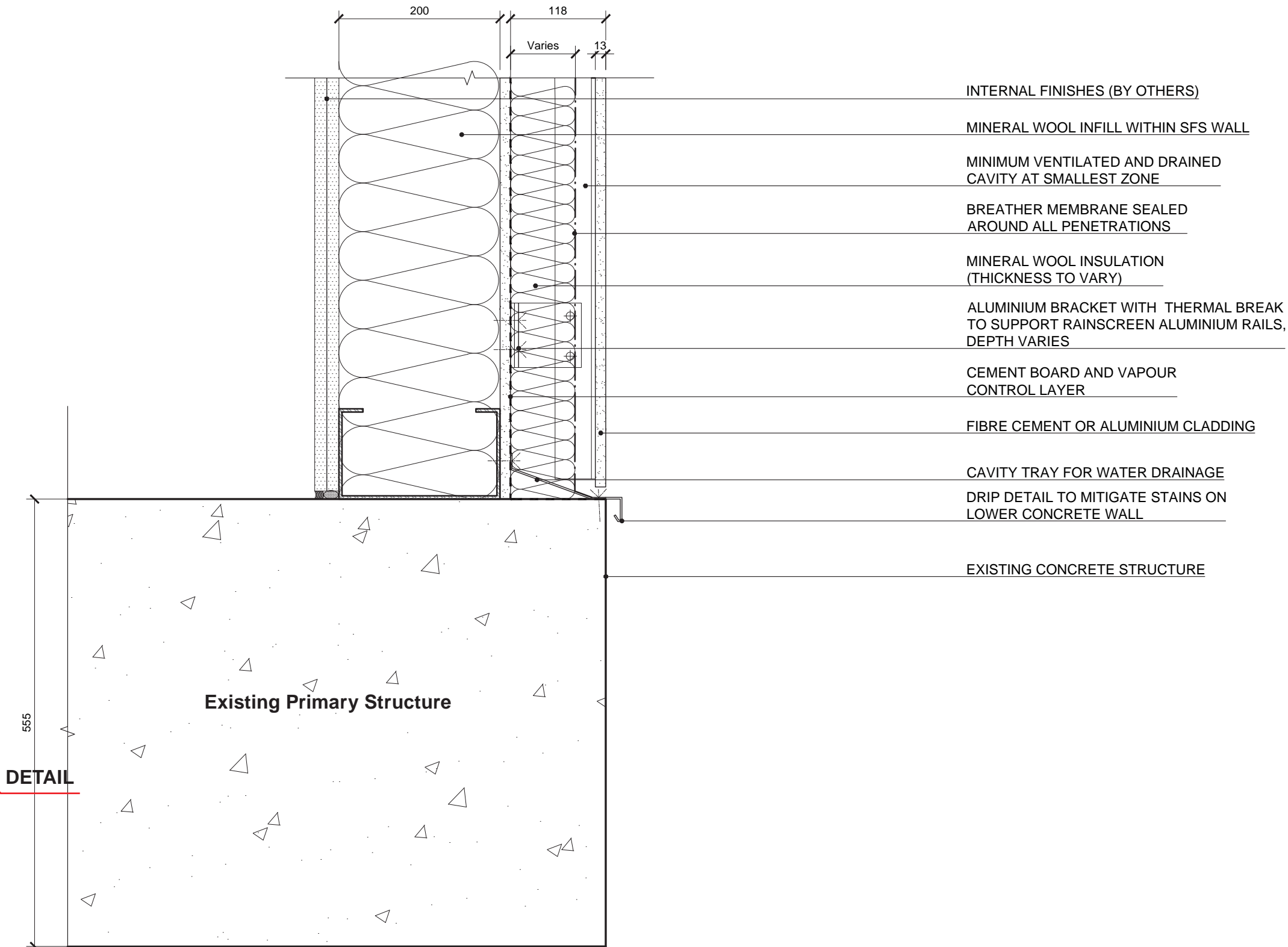
- Overall U-value for the East wall to be calculated taking into account linear thermal bridges due to interface with primary structure, punctual thermal bridges due to rainscreen bracket, available zones.
- Cladding fixing and joints position to be coordinated with PMU anchor points
- Face fix for FC cladding and concealed fixing for aluminium rainscreen

 <b>UK-LON-KGX1</b>  GOOGLE INC 16-21 Stable Street London, N1C 4AB TEL: +44 (0)203 6640200	<p>General Notes</p> <ol style="list-style-type: none"><li>The drawing content reflects the design intent only and is not for construction.</li><li>Read this drawing in conjunction with general architectural plans, structural plans and other related drawings &amp; specifications</li><li>This drawing should be read in conjunction with the Arup Facade Specification</li><li>For Finishes and internal fit-out design see Architects Finishes Schedule</li><li>For Glass information see EOC Specification</li><li>For Access and Maintenance information see REEF Specification</li><li>For Thermal performance criteria see MEP Specification</li><li>For Structure and Movements and Tolerances see AKTH Specification</li><li>For Acoustic performance see Sandy Brown Specification</li></ol>	<p>10. Do not use for:</p> <ul style="list-style-type: none"><li>determining the size or type of any fixing</li><li>determining the thickness of any material, including glass, insulation or metal sections; determining any section sizes, but transom and mullions profiles dimensions provided are maximum values;</li><li>determining any set out dimensions</li><li>determining any tolerance or dimensions to accommodate movements; setting up any cladding contractor drawings</li></ul> <p>11. All variables regarding building physical and security properties (e.g. sound protection, thermal insulation, fire protection, etc.) in accordance with specifications of facade works.</p> <p>12. It lies with the responsibility of the contractor to verify all dimensions on site.</p> <p>13. Do NOT scale from this drawing.</p> <p>14. Report any discrepancies to the Architect</p> <p>15. Copyright - all rights are reserved and to reproduce without the permission of Arup Facade Engineering is prohibited.</p>	<table border="1"><tr><td>Rev</td><td>Rev</td><td>Rev</td><td>Rev</td><td>Rev</td></tr><tr><td>1</td><td>2</td><td>3</td><td>4</td><td>5</td></tr><tr><td>1</td><td>2</td><td>3</td><td>4</td><td>5</td></tr><tr><td>1</td><td>2</td><td>3</td><td>4</td><td>5</td></tr><tr><td>1</td><td>2</td><td>3</td><td>4</td><td>5</td></tr></table>	Rev	Rev	Rev	Rev	Rev	1	2	3	4	5	1	2	3	4	5	1	2	3	4	5	1	2	3	4	5	  13 Fitzroy Street London W1T 4BQ Tel. +44 (0)20 7636 1531 Fax. +44 (0)20 7580 3924 www.arup.com		<table border="1"><tr><td colspan="2">FOR TENDER</td></tr><tr><td>Title</td><td>28/01/2020</td></tr><tr><td>Project</td><td>249545-00</td></tr><tr><td>Scale</td><td>1:5</td></tr><tr><td>Sheet</td><td>A3</td></tr><tr><td>Discipline</td><td>MA</td></tr><tr><td>Author</td><td>AL</td></tr><tr><td>Checker</td><td>AL</td></tr><tr><td>Drawn by</td><td>KXC-A-001-Y-ARP-21-50034</td></tr><tr><td>Rev</td><td>T01</td></tr></table>	FOR TENDER		Title	28/01/2020	Project	249545-00	Scale	1:5	Sheet	A3	Discipline	MA	Author	AL	Checker	AL	Drawn by	KXC-A-001-Y-ARP-21-50034	Rev	T01
Rev	Rev	Rev	Rev	Rev																																															
1	2	3	4	5																																															
1	2	3	4	5																																															
1	2	3	4	5																																															
1	2	3	4	5																																															
FOR TENDER																																																			
Title	28/01/2020																																																		
Project	249545-00																																																		
Scale	1:5																																																		
Sheet	A3																																																		
Discipline	MA																																																		
Author	AL																																																		
Checker	AL																																																		
Drawn by	KXC-A-001-Y-ARP-21-50034																																																		
Rev	T01																																																		



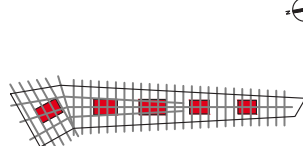




Typical Vertical Section Base Detail at Interface with Existing Primary Structure - East Elevation

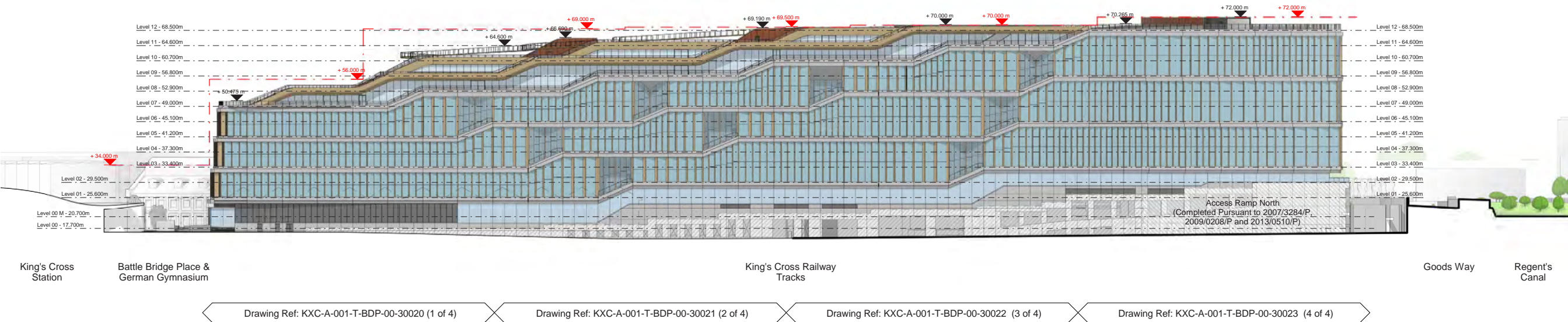


- Overall U-value for the East wall to be calculated taking into account linear thermal bridges due to interface with primary structure, punctual thermal bridges due to rainscreen bracket, available zones.
- Cladding fixing and joints position to be coordinated with PMU anchor points
- Face fix for FC cladding and concealed fixing for aluminium rainscreen

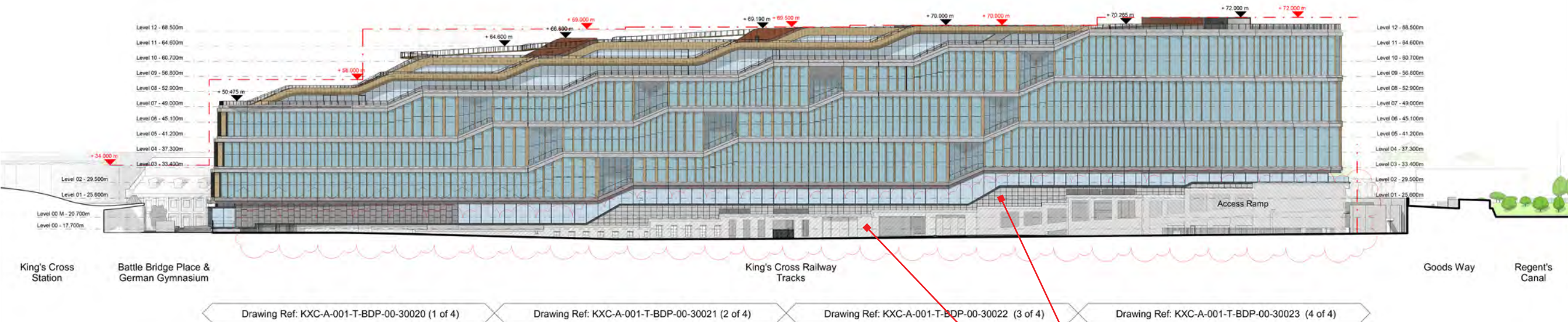
 <b>UK-LON-KGX1</b>  GOOGLE INC 16-21 Stable Street London, N1C 4AB TEL: +44 (0)203 6640200	<b>General Notes</b> 1. The drawing content reflects the design intent only and is not for construction. 2. Read this drawing in conjunction with general architectural plans, structural plans and other related drawings & specifications. 3. This drawing should be read in conjunction with the Arup Façade Specification. 4. For Finishes and internal fit-out design see Architects Finishes Schedule. 5. For Glass information see EOC Specification. 6. For Access and Maintenance information see REEF Specification. 7. For Thermal performance criteria see MEP Specification. 8. For Structure and Movements and Tolerances see AKTH Specification. 9. For Acoustic performance see Sandy Brown Specification.	<b>Do not use for:</b> <ul style="list-style-type: none"><li>determining the size or type of any fixing</li><li>determining the thickness of any material, including glass, insulation or metal sections; determining any section sizes, but transom and mullions profiles dimensions provided are maximum values;</li><li>determining any set out dimensions</li><li>determining any tolerance or dimensions to accommodate movements; setting up any cladding contractor drawings</li></ul> <b>All variables regarding building physical and security properties (e.g. sound protection, thermal insulation, fire protection, etc.) in accordance with specifications of facade works.</b> 12. It lies with the responsibility of the contractor to verify all dimensions on site. 13. Do NOT scale from this drawing. 14. Report any discrepancies to the Architect. 15. Copyright - all rights are reserved and to reproduce without the permission of Arup Façade Engineering is prohibited.	  13 Fitzroy Street London W1T 4BQ Tel. +44 (0)20 7636 1531 Fax. +44 (0)20 7580 3924 www.arup.com		<b>FOR TENDER</b>  Title <b>VERTICAL SECTION AT BASE DETAIL EAST ELEVATION</b>  Drawing No. <b>KXC-A-001-Y-ARP- 21-50033</b>	<table border="1"><tr><td>Date</td><td>09/01/2020</td></tr><tr><td>Project No.</td><td>249545-00</td></tr><tr><td>Scale</td><td>1:5</td></tr><tr><td>Sheet</td><td>A3</td></tr><tr><td>Discipline</td><td>MA</td></tr><tr><td>Author</td><td>AL</td></tr><tr><td>Checker</td><td></td></tr><tr><td>Rev.</td><td></td></tr><tr><td>Rev.</td><td>T00</td></tr></table>	Date	09/01/2020	Project No.	249545-00	Scale	1:5	Sheet	A3	Discipline	MA	Author	AL	Checker		Rev.		Rev.	T00
Date	09/01/2020																							
Project No.	249545-00																							
Scale	1:5																							
Sheet	A3																							
Discipline	MA																							
Author	AL																							
Checker																								
Rev.																								
Rev.	T00																							



Planning Drawing of East Elevation - Proposed Design Comparison



Existing Design - Planning Drawing of East Elevation



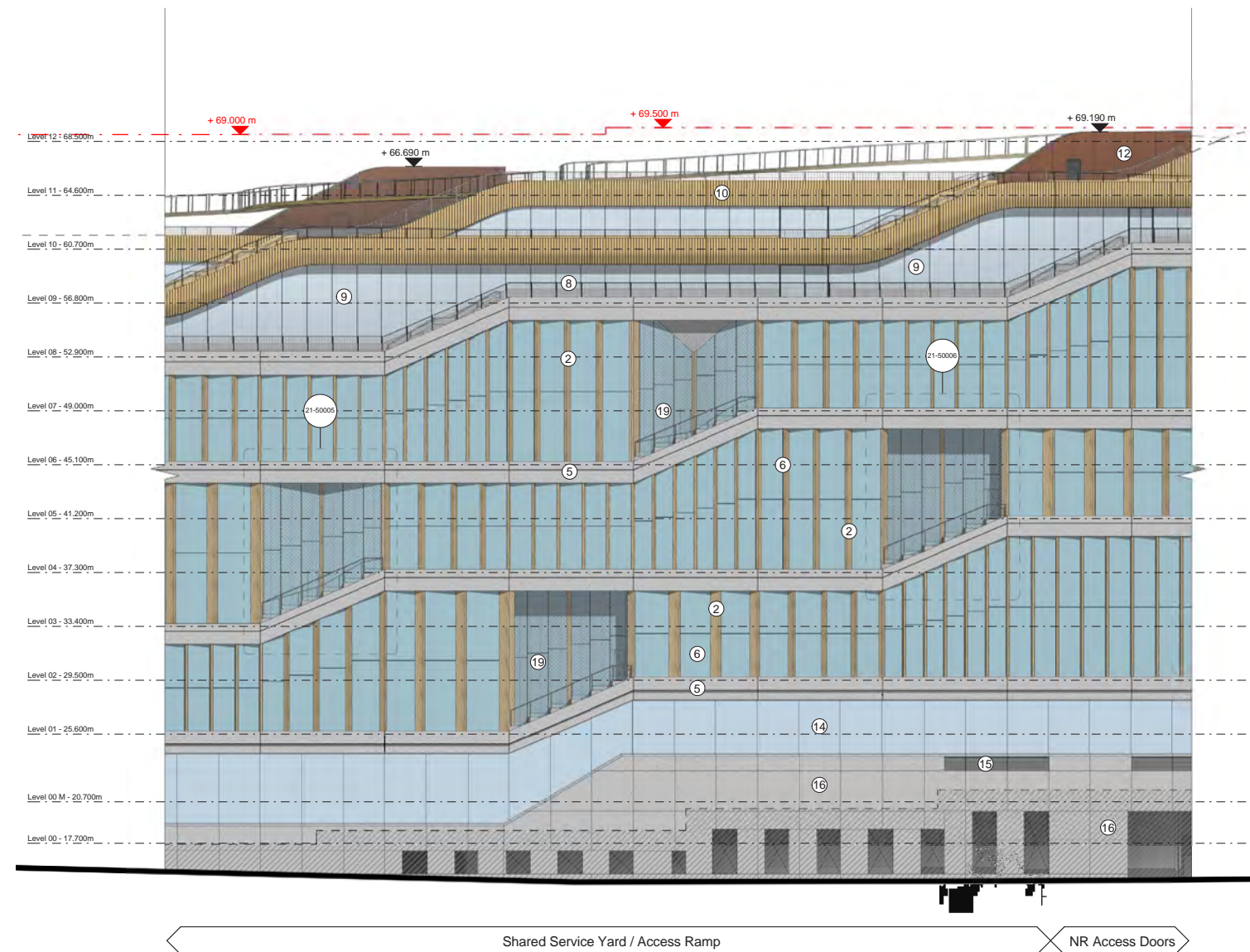
Proposed Design -Planning Drawing of East Elevation

Proposed change of material to GRC Rieder cladding and to be painted (Keim Paint)

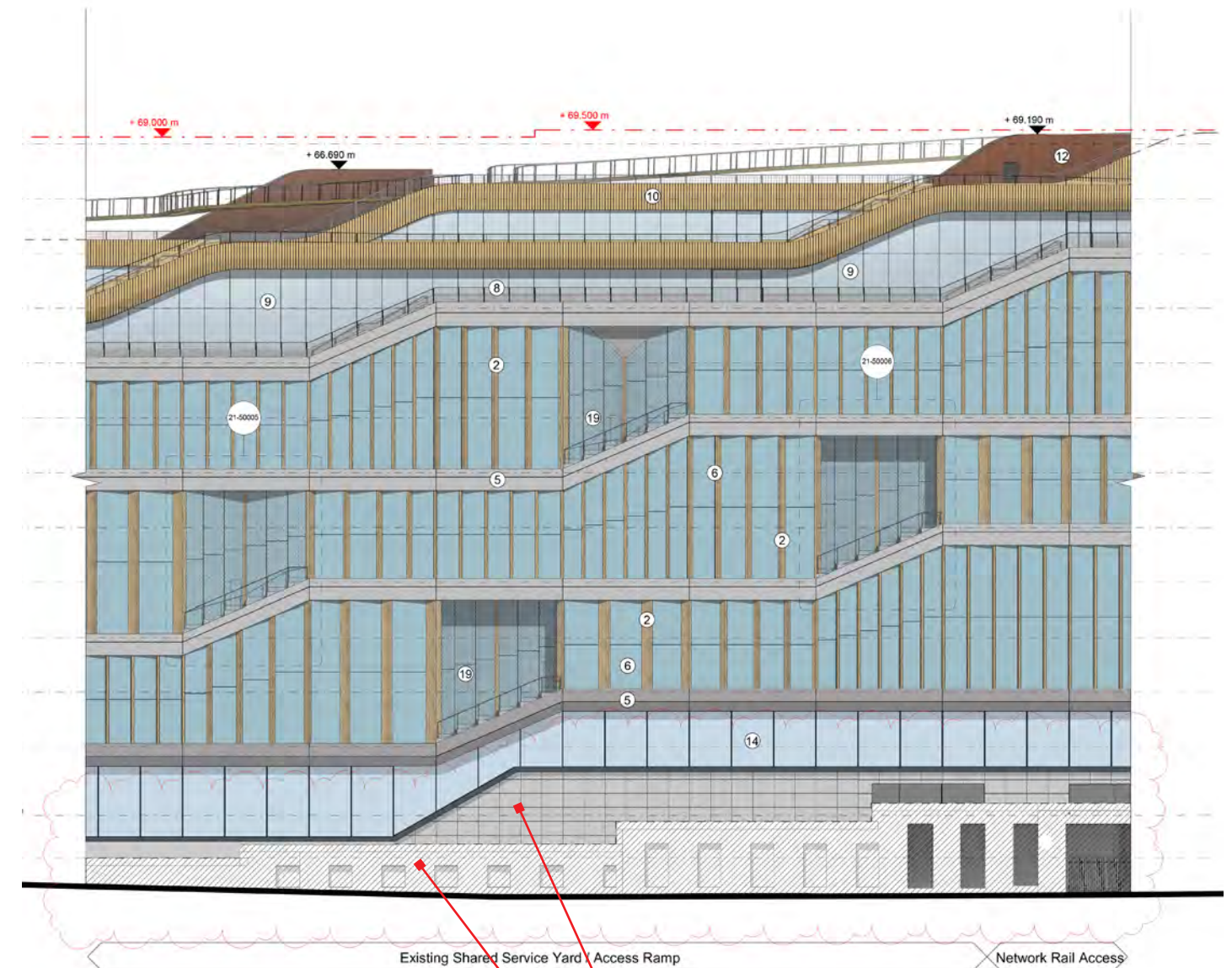
Proposed change of material to painted concrete finish (Keim Paint)



## Planning Drawing of East Elevation - Proposed Design Comparison



Existing Design - Planning Drawing of Typical Bay to East Elevation



**Proposed change of material to GRC Rieder cladding and to be painted (Keim Paint)**

**Proposed change of material to painted concrete finish (Keim Paint)**

Proposed Design - Planning Drawing of Typical Bay to East Elevation



Product information

- Rieder concrete skin (GRC Cladding)
- Keim Paint (Concrete paint finish)

North Cycle Entrance Facade Proposal



Product information- Rieder concrete skin (GRC Cladding)



	FE Ferro	FL Ferro Light	MA Matt
Polar White			
Off-White			
Ivory			

Colours and Surfaces - Colour to Match Existing Concrete

**FE | Ferro**  
Sandblasted: blasted at higher pressure, surface is rougher



**FL | Ferro Light**  
Sandblasted: blasted at lower pressure, surface is finer than FE



**MA | Matt**  
Brushed, smooth surface, mottled appearance, natural blushing effect



Small air bubbles and porosity are possible: data sheet on exposed concrete 02/2004 (Publ.:BDZ/DBV)

Surfaces Finishes - Finishes to Match Existing



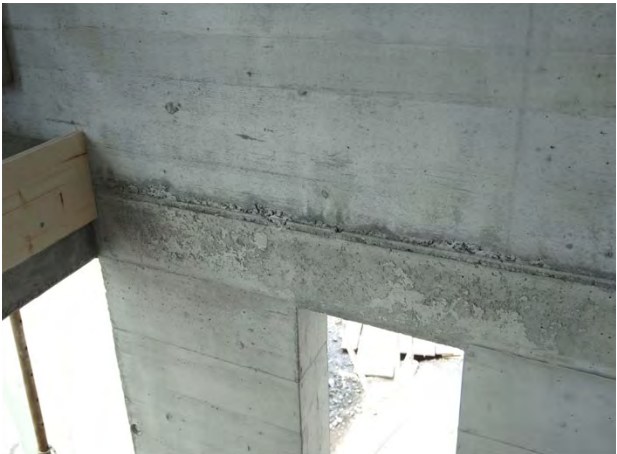
**Product information- Keim Paint (Concrete paint finish)**



**After image**

**Keim Concretal Lasur**

Keim Concretal Lasur is a low pigmentation colour wash available in a wide range of colours and shades. It acts as a stain that penetrates and bonds to the surface of concrete, equalising colour variations whilst maintaining the structure and appearance of concrete.



**Before image**

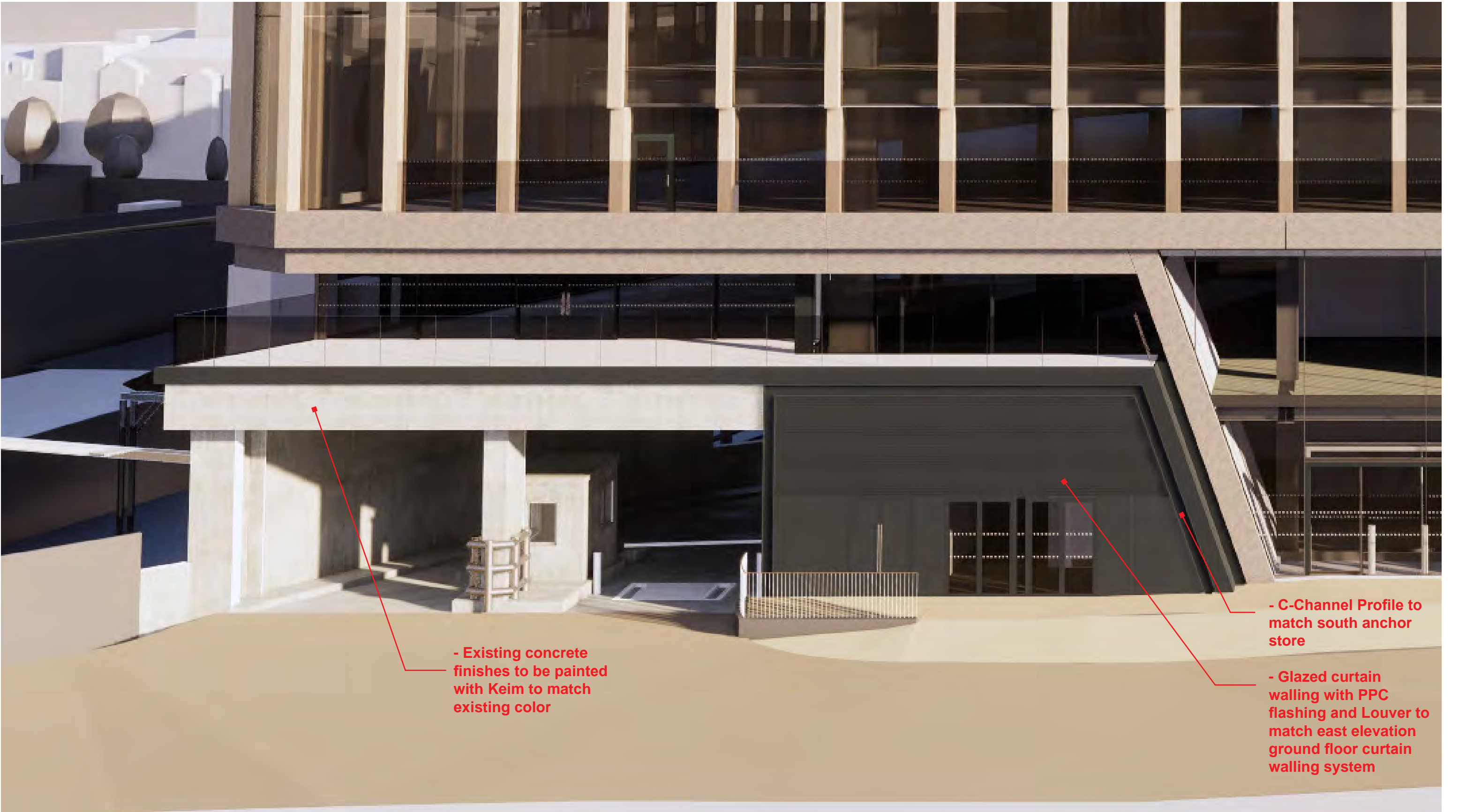


**Image of Sample test by Keim**





North Cycle Entrance Facade Proposal 3D Views (Option 1 - BDP Preferred Option)





North Cycle Entrance Facade Proposal 3D Views (Option 1 - BDP Preferred Option)



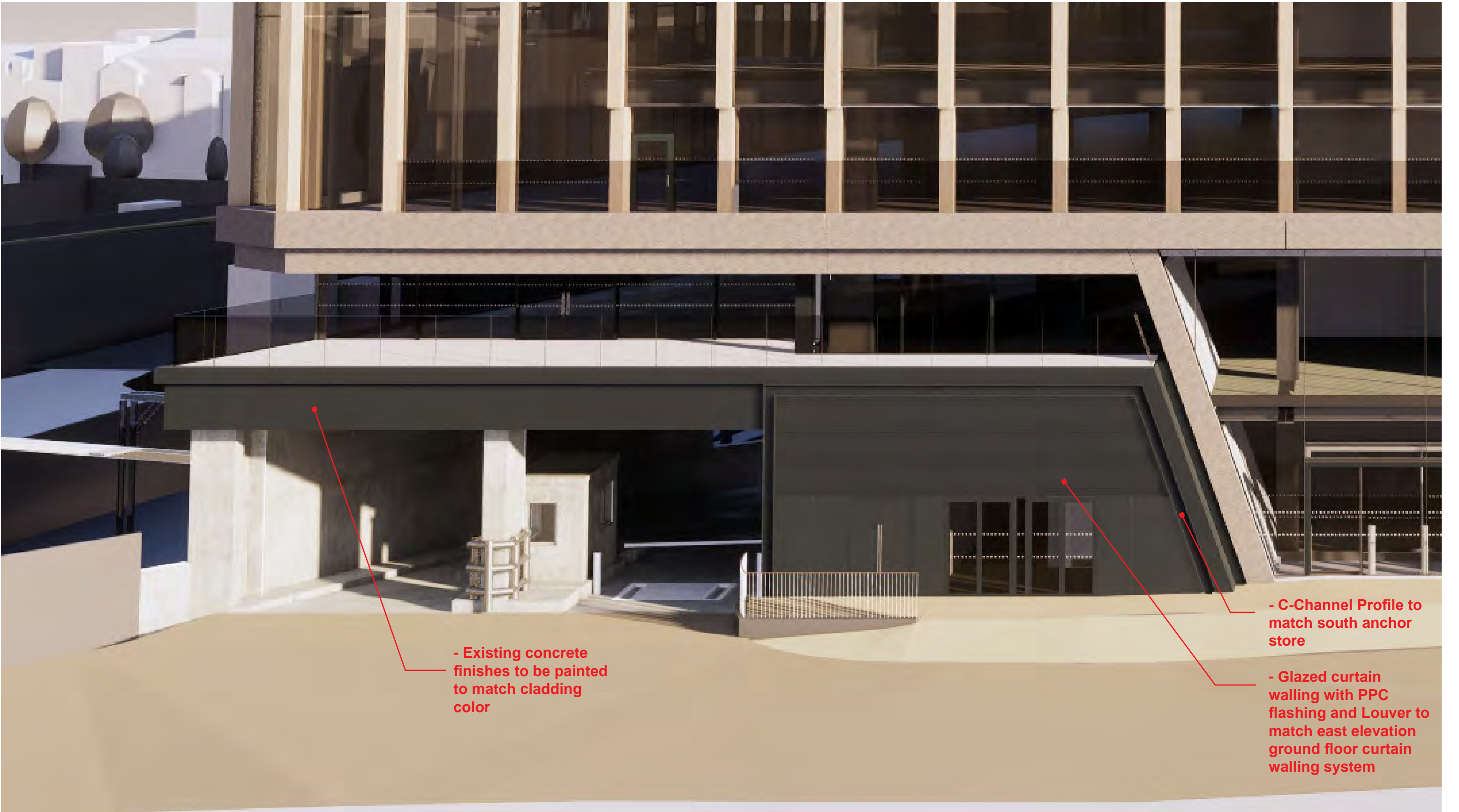


**North Cycle Entrance Facade Proposal 3D Views (Option 1 - BDP Preferred Option)**





North Cycle Entrance Facade Proposal 3D Views (Option 2)





North Cycle Entrance Facade Proposal 3D Views (Option 2)





## North Cycle Entrance Facade Proposal 3D Views (Option 2)

