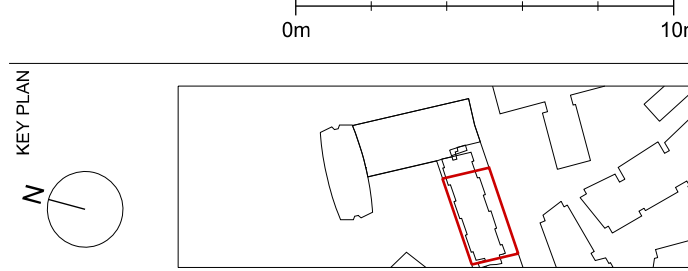


NOTES
DO NOT SCALE FROM THIS DRAWING.
CONTRACTOR TO CHECK ALL DIMENSIONS ON SITE.
ANY DISCREPANCIES TO BE REPORTED TO THE ARCHITECT IMMEDIATELY.
COPYRIGHT MICA ARCHITECTS LTD ©

Notes:
Existing information is based on construction drawings for both the original refurbishment works and the subsequent retail fit out. A full survey of the space, including service routes and positions of physical features should be undertaken prior to construction. Please report any discrepancies to the Architect.
Please note that furniture is not indicated on the drawings as it is assumed it will be removed by the outgoing retailer.

- Key**
- Unit R05 area
 - Shared Plant room (second floor level)
 - Existing building (refurbishment works)
 - Existing building (retail fit-out works)
 - Proposed demolition / removal indicated in orange throughout
 - Blue indicates proposed works throughout
 - Plasterboard suspended ceiling (refurbishment / retail fit-out / proposed)
 - Anodised Aluminium Panel
 - Steel Staircase Painted
 - Making good painted plaster on concrete
 - Suspended ceiling tiles (hygienic)
 - Mineral fibre acoustic insulation (existing)
 - Mechanical Ventilation Outlet
 - Smoke Detector and Visual Alarm device
 - Visual Alarm Device
 - Smoke Detector
 - Presence Detector
 - Lighting fixtures (refer to electrical engineer drawings for detail)
 - Speaker

| REVISIONS | | |
|-----------|----------|---------------------|
| PL2 | 19.10.20 | PLANNING UPDATE |
| PL1 | 04.09.20 | ISSUED FOR PLANNING |
| P1 | 02.09.20 | PRELIMINARY ISSUE |
| REV | DATE | DESCRIPTION |



STATUS
PLANNING

MICA

123 Camden High Street London NW1 7JR
T: 020 7284 1727 F: 020 7267 7626
info@micaarchitects.com www.micaarchitects.com

JOB
Centre Point
Unit R05
12 & 12A St Giles Square

TITLE
Demolition
Planning / Listed Building Consent
Reflected Ceiling Ground Floor Plan

DRG #
709-MICA-CH-00-DR-A-19115 **PL2**

| | | | | | | | | | | |
|---------|----|-------|----|-------|-------|------|----|-----|------|----------|
| CHECKED | UK | DRAWN | DL | SCALE | 1:100 | SIZE | A1 | REV | DATE | 19.10.20 |
|---------|----|-------|----|-------|-------|------|----|-----|------|----------|