



GF WINDOWS TO BE REMOVED



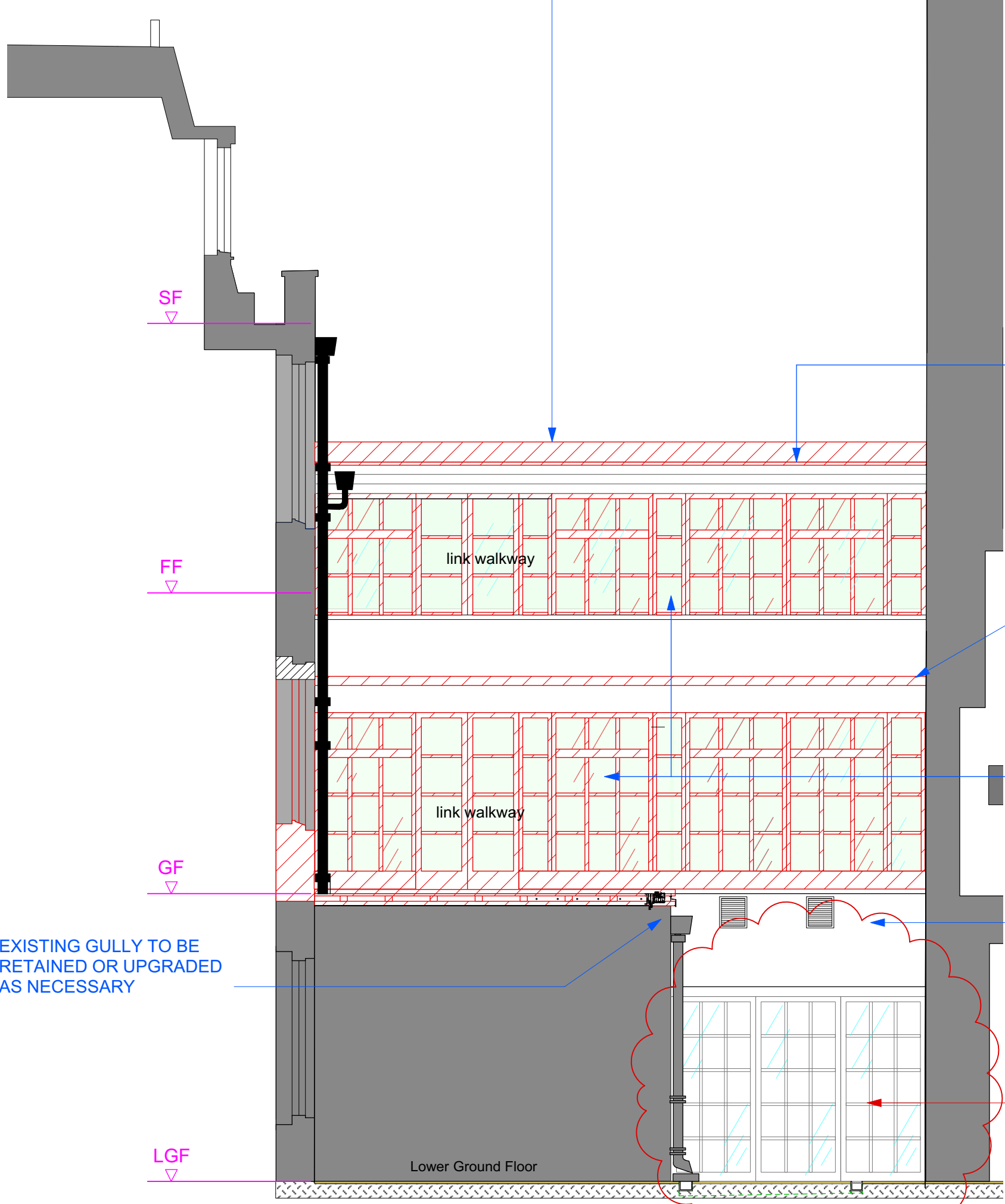
FF-WALKWAY GLAZING TO BE REMOVED BOTH SIDES



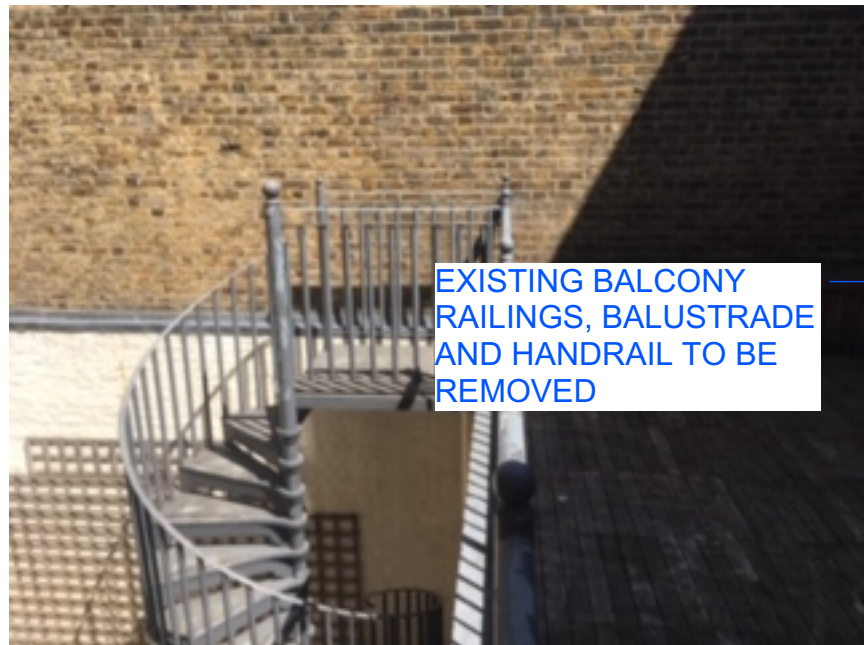
GF-WALKWAY GLAZING TO BE REMOVED



Rear Elevation AA
Scale 1:50



Rear Elevation BB
Scale 1:50



WINDOWS AND WALL AREA TO BE REMOVED TO CREATE LARGE OPENING INTO PROPOSED CONSERVATORY

EXISTING BALCONY RAILINGS, BALUSTRADE AND HANDRAIL TO BE REMOVED

EXISTING ROOF LINING, FLASHING AND DRESSING TO BE REMOVED

EXISTING FLASHING TO BE REMOVED AND REPLACED WITH NEW

EXISTING GLAZING & DOORS TO WALKWAY TO BE REMOVED ON ALL LEVELS

EXISTING VENTILATION GRILLES TO BE REMOVED

EXISTING DOORS AT LOWER GROUND FLOOR LEVEL TO REMAIN - TO BE INKEEPING WITH THE OTHER GLAZING OFF THE LGF COURTYARD

EXISTING DOORS AT LOWER GROUND FLOOR LEVEL TO REMAIN - TO BE INKEEPING WITH THE OTHER GLAZING OFF THE LGF COURTYARD

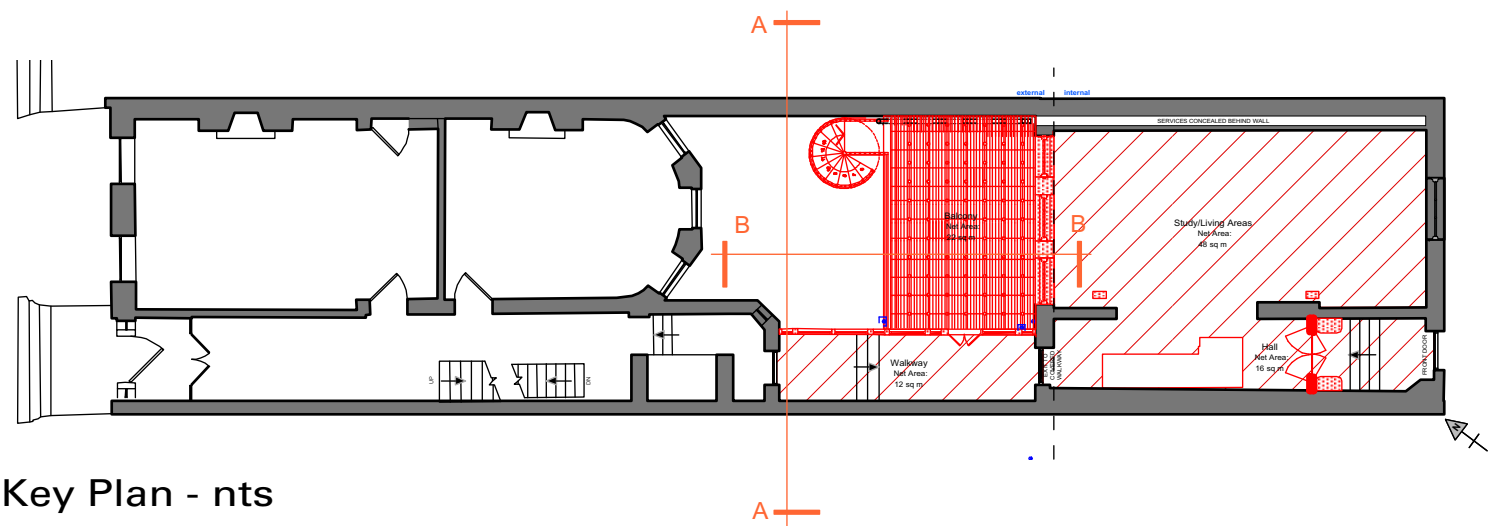
EXISTING GULLY TO BE RETAINED OR UPGRADED AS NECESSARY

DEMOLITION KEY

RED LINE & FILL DENOTES DEMOLITION



Scale bar



Key Plan - nts

A	2020-11-20	Updated for approval-see revision clouds & red text
-	2020-06-01	New drawing
Rev	Date	Notes

FOR APPROVAL

Project
The Mews House
33 Bedford Avenue
WC1B 3DP

Drawing
Existing/Demolition
Rear External Elevations

Scale
1:50 @ A1

Number
BSQ-100

Copyright © CP DESIGN - All dimensions are in millimeters unless otherwise stated - Do not order or build using information scaled from this drawing - 3 Alma Court - Wokingham - Berkshire - RG41 2BG - +44 (0)7779 622099 - pickering-cj@gmail.com -

CP DESIGN

Drawn by
cp
Revision
A

Notes:

- 1

Sliding Doors from living area - minimal 20mm aluminium profile - **RAL 9010 White**. Glass spec-low ion glass
- 2

Roof Glazing - frameless structural glass with glazing fins or minimal 20mm aluminium profile in **RAL 9010 White**. Glass spec-low ion, low maintenance,70/35 solar control layer
- 3

Sliding doors to courtyard area - minimal 20mm aluminium profile - **RAL 9010 White**. Glass spec-low ion, low maintenance,70/35 solar control layer
- 4

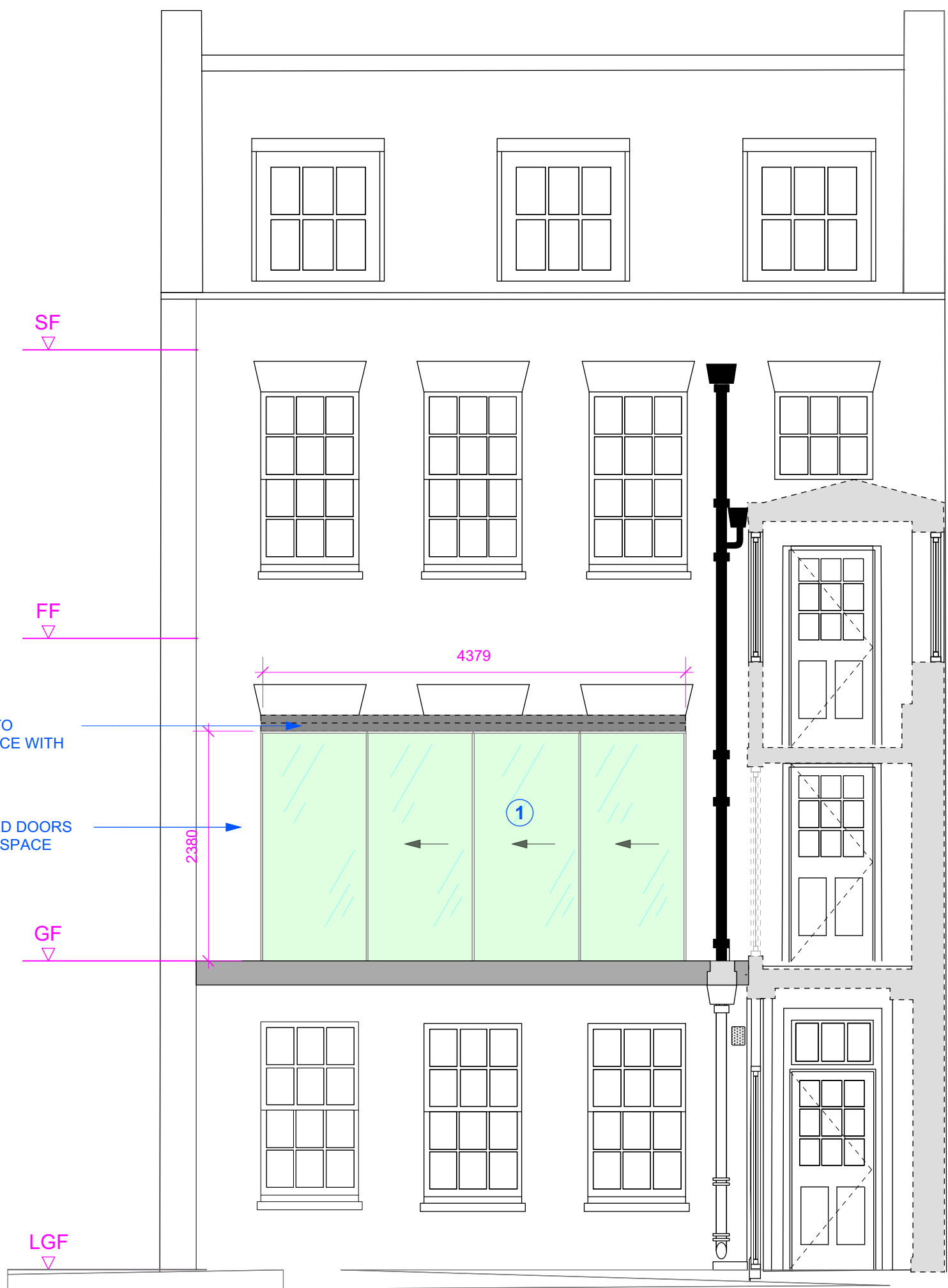
Juliet balcony - bolt-on frameless balustrade. Glass spec-low ion, low maintenance,70/35 solar control layer
- 5

Walkway glazing - slim aluminium profile in **RAL 9010 White**. Fixed panels with 2 openable top windows each side for through ventilation. Glass spec-low ion, low maintenance,70/35 solar control layer
- 7

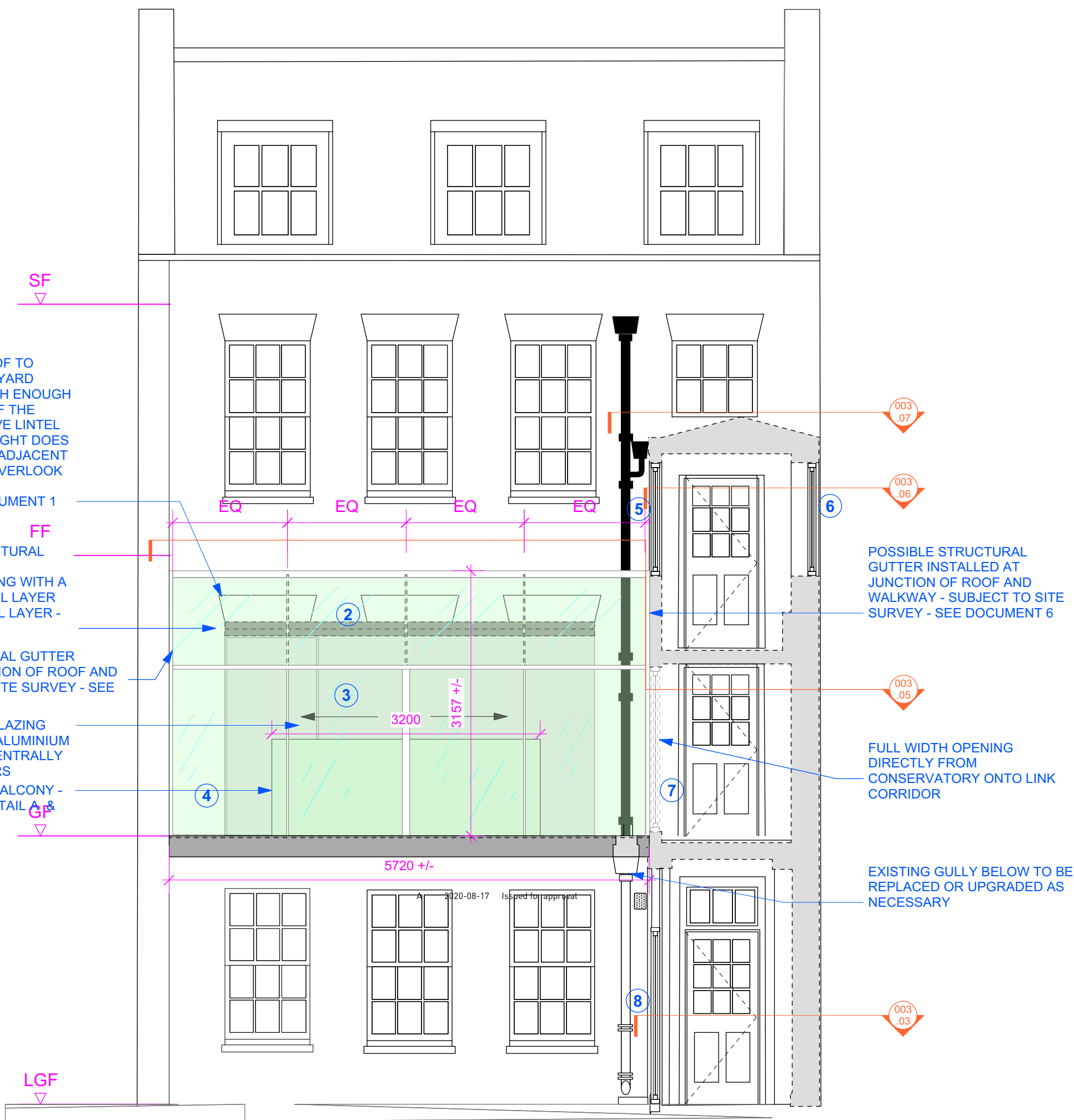
Walkway glazing - slim aluminium profile in **RAL 9010 White**. Fixed panels with 1 openable top window. Glass spec-low ion, low maintenance,70/35 solar control layer
- 8

Basement - Aluminum side hung casement door with side light and 1 openable top window in **RAL 9010 White**. Glass spec-low ion, low maintenance,70/35 solar control layer

RAL 9010



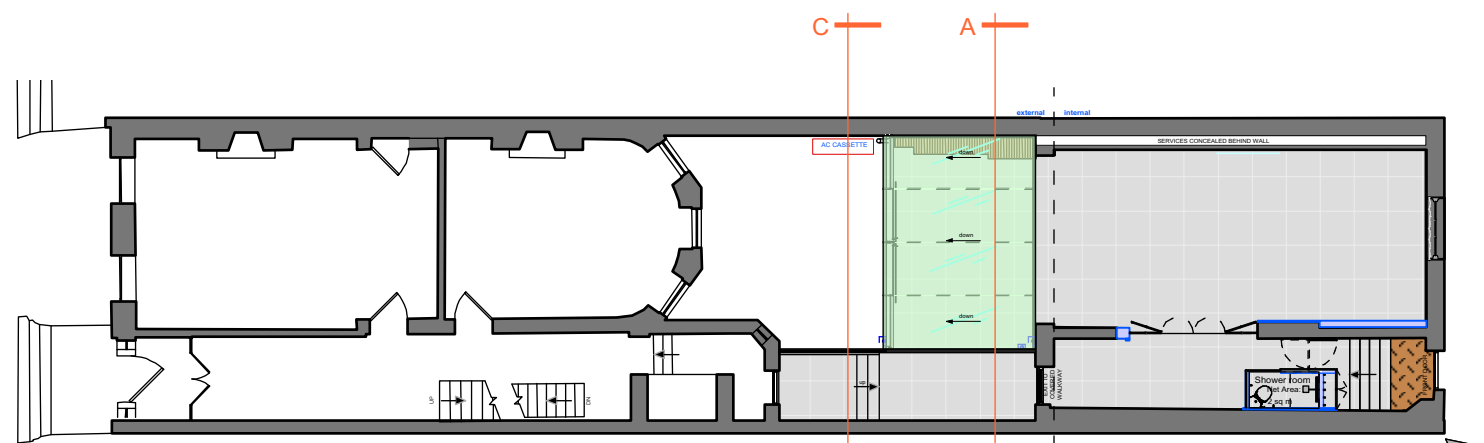
Rear Elevation/Section AA
Scale 1:50



Rear Elevation CC
Scale 1:50



Scale bar



Key Plan - nts

A	2020-11-20	Updated for approval-see revision clouds & red text
-	2020-06-01	New drawing
Rev	Date	Notes

FOR APPROVAL

Project
The Mews House
52 Bedford Square
WC1B 3DP

Drawing
Proposed
Rear External Elevations

Scale
1:50 @ A1

Number
BSQ-101

CP DESIGN

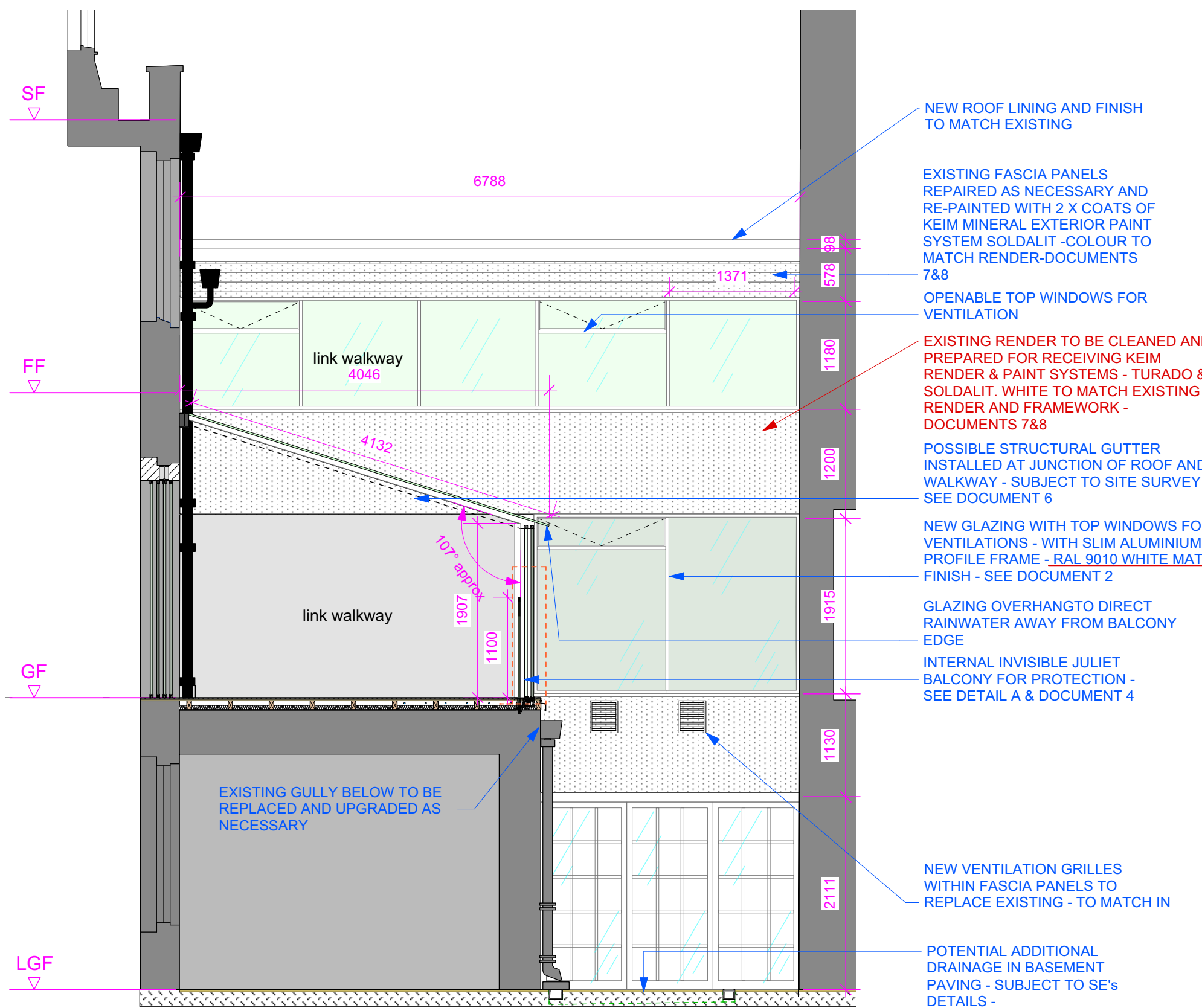
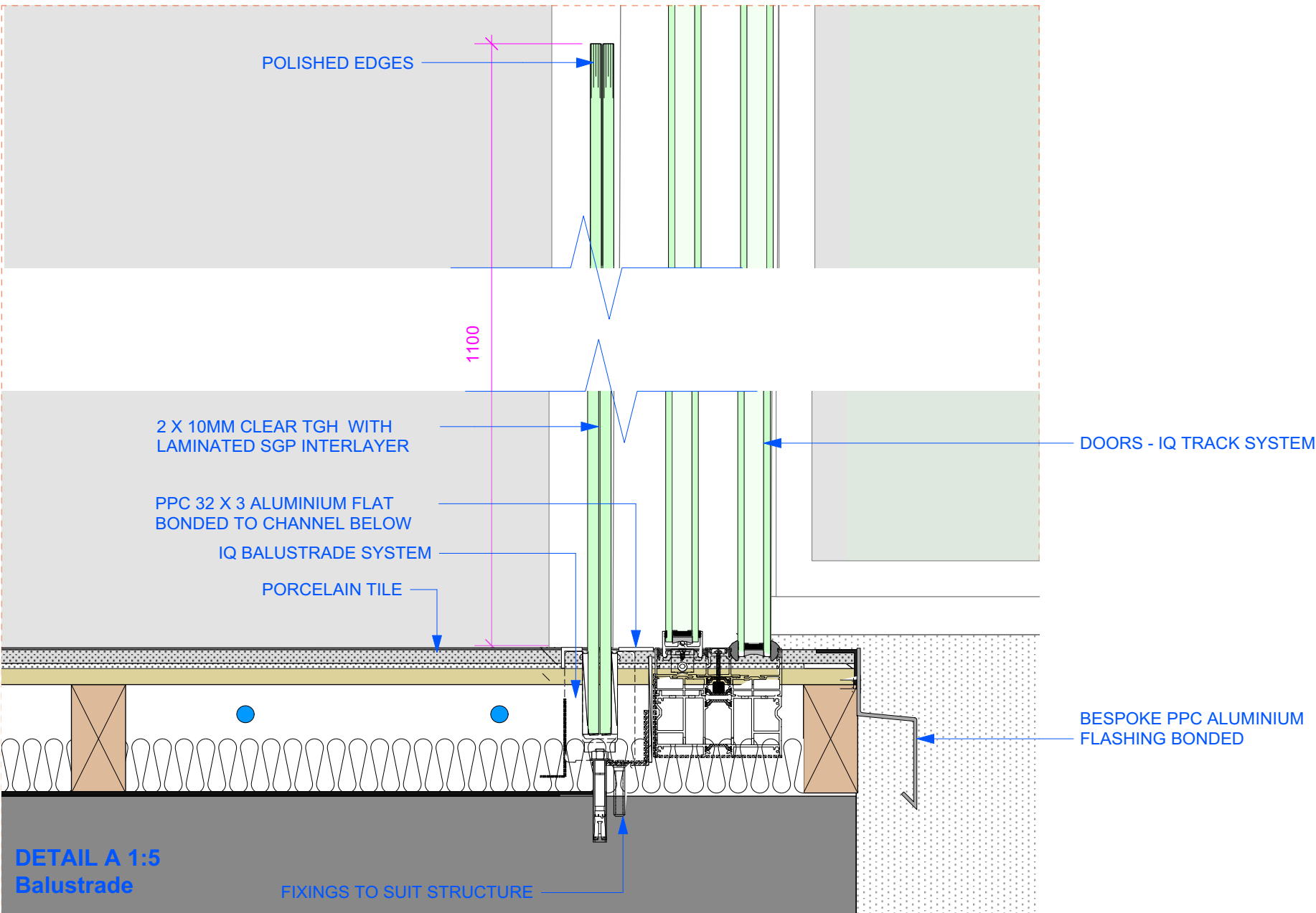
Drawn by
cp

Revision
A

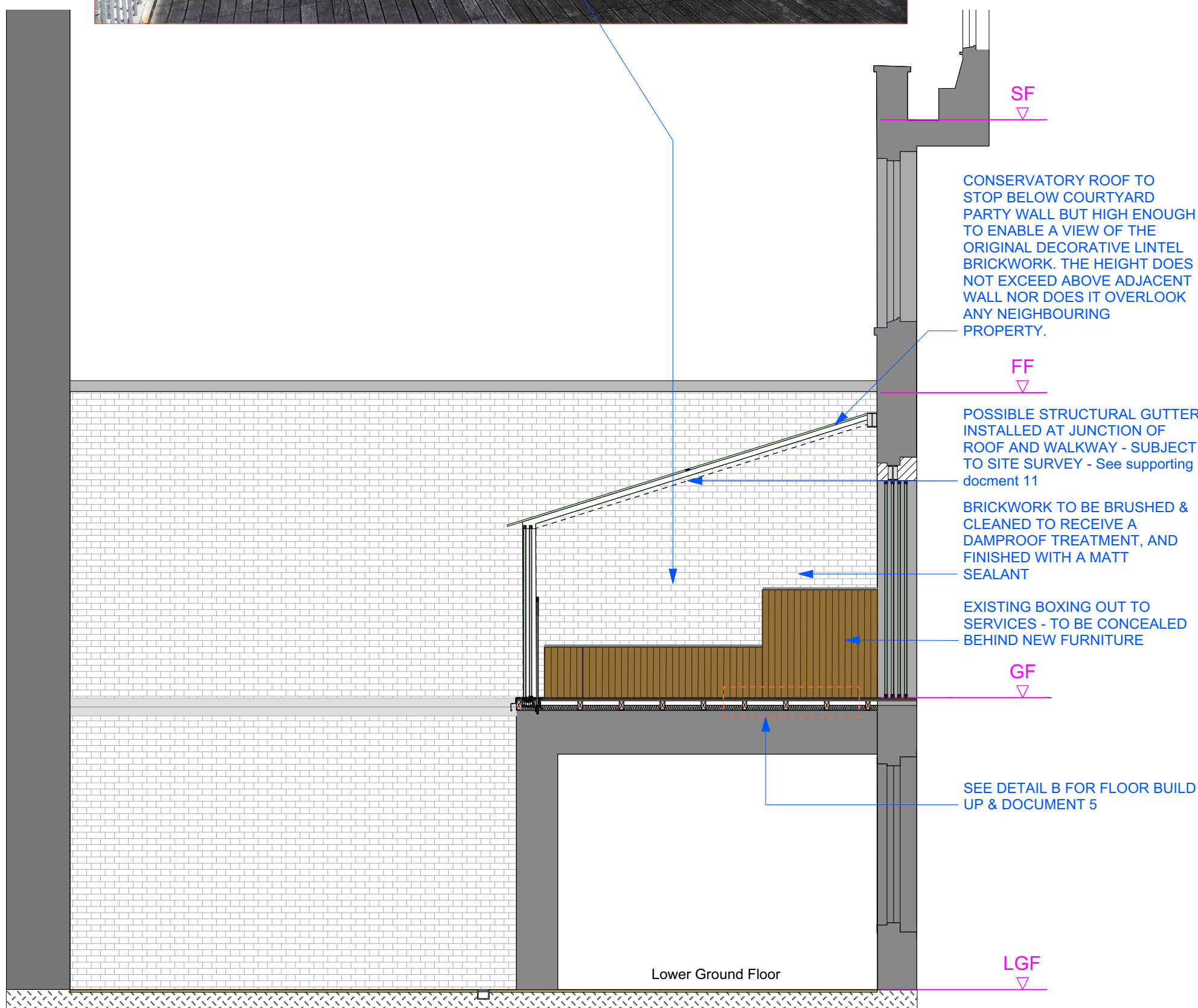
Notes:

RAL 9010

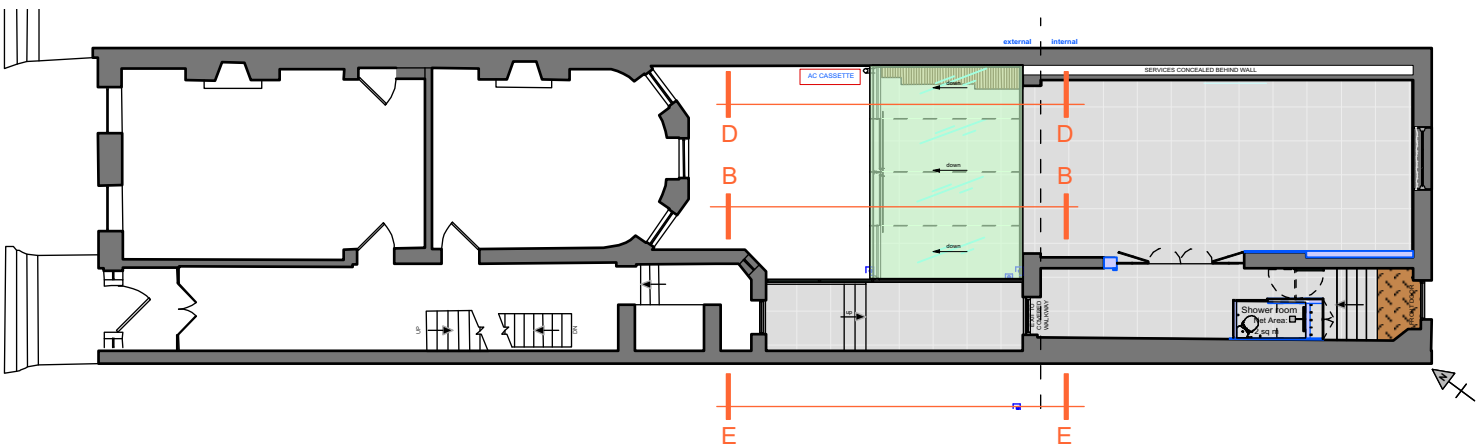
New aluminium window framework colour



Rear Elevation/Section BB
Scale 1:50



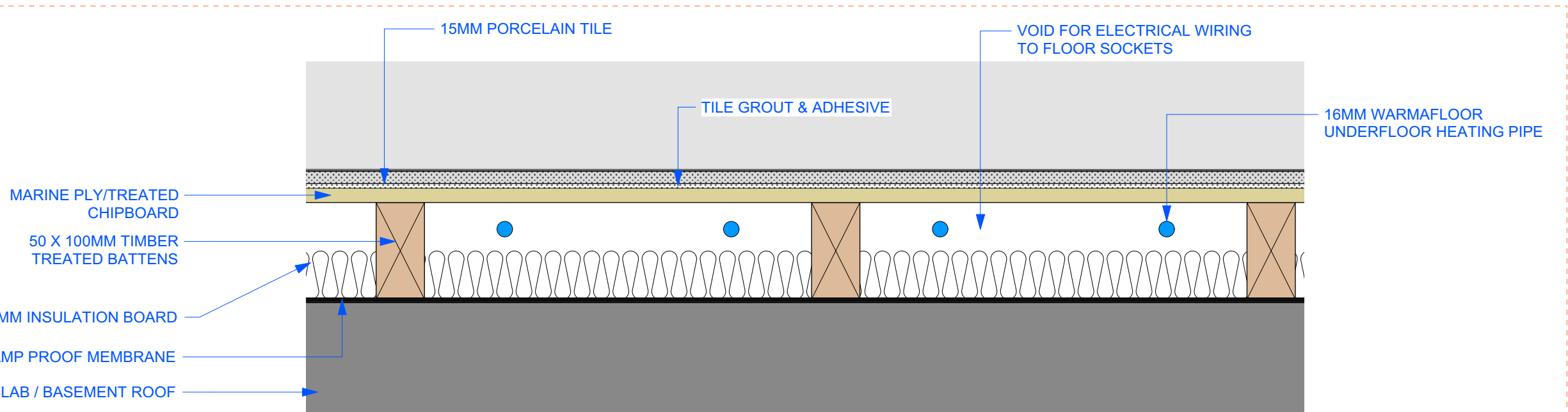
Rear Elevation/Section DD
Scale 1:50



Key Plan - nts



Scale bar



DETAIL B 1:5
Proposed floor build up - subject to SE's calculations

A	2020-11-20	Updated for approval-see revision clouds & red text
-	2020-06-01	New drawing
Rev	Date	Notes

FOR APPROVAL

Project
The Mews House
52 Bedford Square
WC1B 3DP

Drawing
Proposed OPTION 1
Rear External Elevations

Scale
1:50 @ A1

Number
BSQ-102

CP DESIGN

Drawn by
cp

Revision
A

Copyright © CP DESIGN - All dimensions are in millimeters unless otherwise stated - Do not order or build using information scaled from this drawing - 3 Alma Court - Wokingham - Berkshire - RG41 2BG - +44 (0)7779 622099 - pickering-cjd@gmail.com -