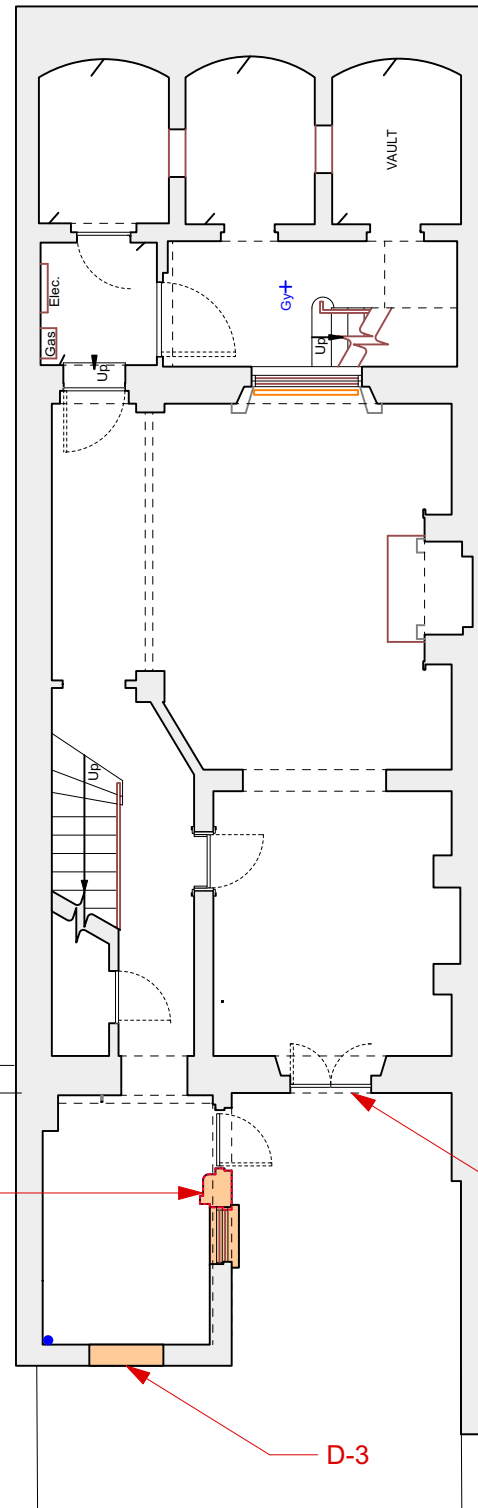
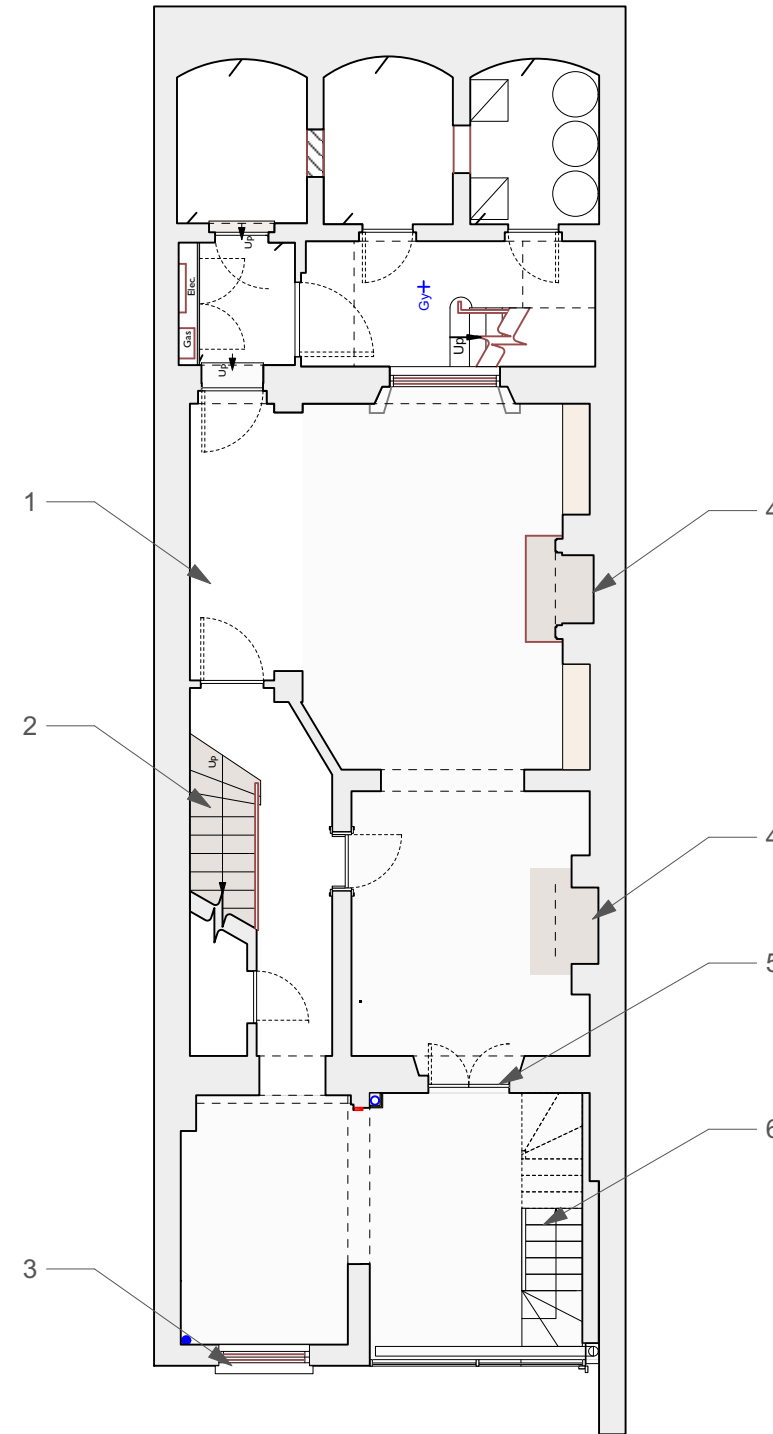


EXISTING PLAN



DEMOLITION PLAN



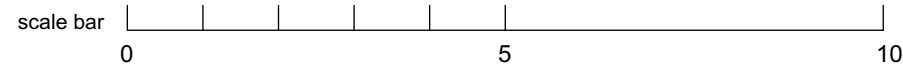
PROPOSED PLAN

DEMOLITION

- D1. Create window opening
- D2. Enlarge opening by removing the brick pier and window.
- D3. Remove low level bricks to create an opening within the existing window reveal.

PROPOSED WORKS

- 1. Retain original flag stones throughout
- 2. Retain original stone stairs
- 3. New timber sash window
- 4. Retain original fire place
- 5. Create doorway within existing window opening
- 6. Lightweight internal staircase



REV	DATE	DESCRIPTION	CHK	NOTES
	15/11/2020	PLANNING	JF	



5 REGENTS PARK TERRACE
 LOWER GROUND FLOOR PLAN
 PLANNING
 173_PL-99
 SCALE@A3