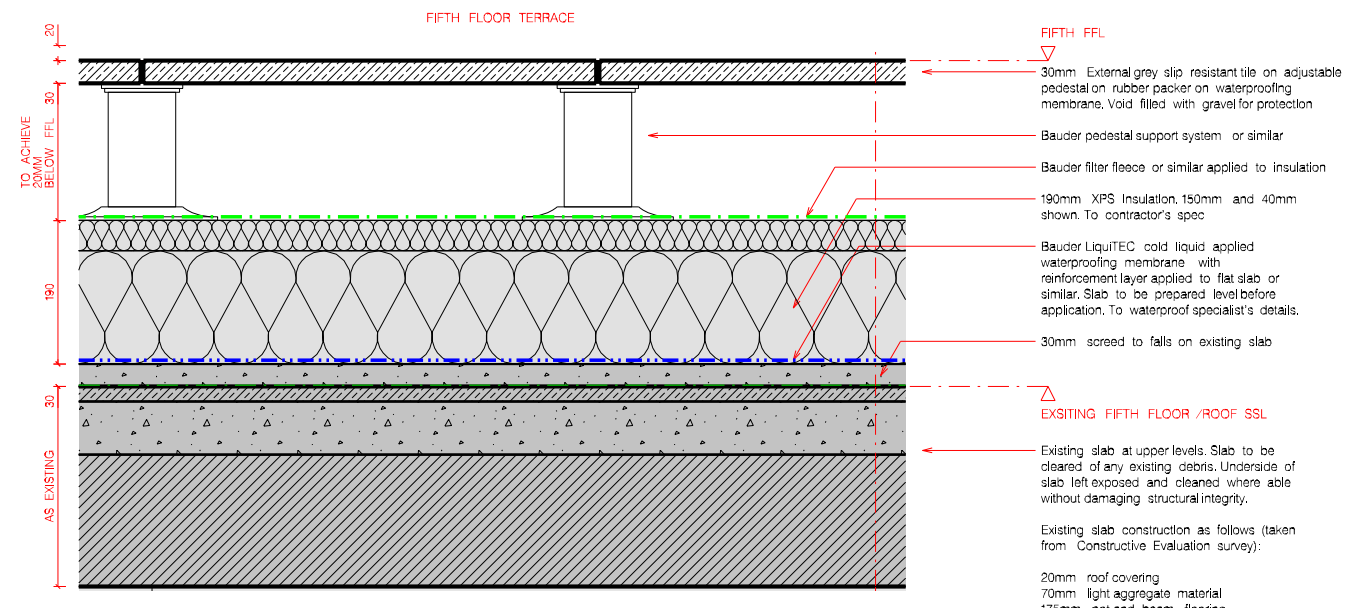
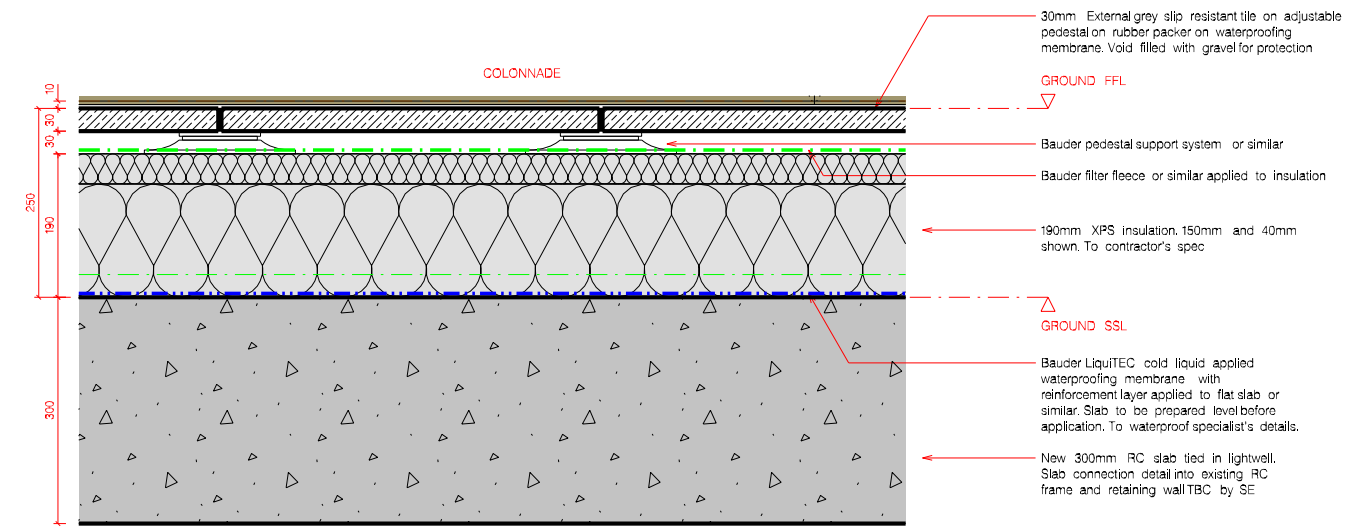


NOTE
 All waterproofing products and details to be installed and approved by approved sub-contractor. Drawings and details not to be used for construction without prior approval.
 Contractor to submit alternative proposals if necessary.

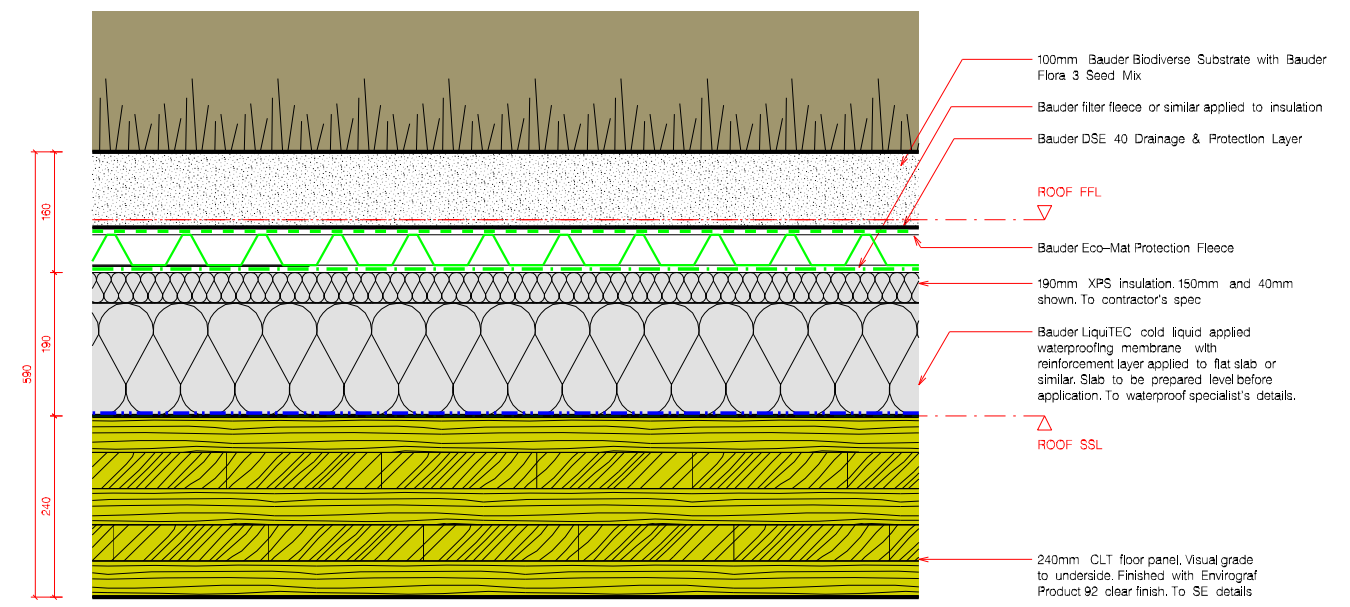
CHANGES FROM PREVIOUS REVISION
 - Removal of 2no. layers of fireboard from top of CLT



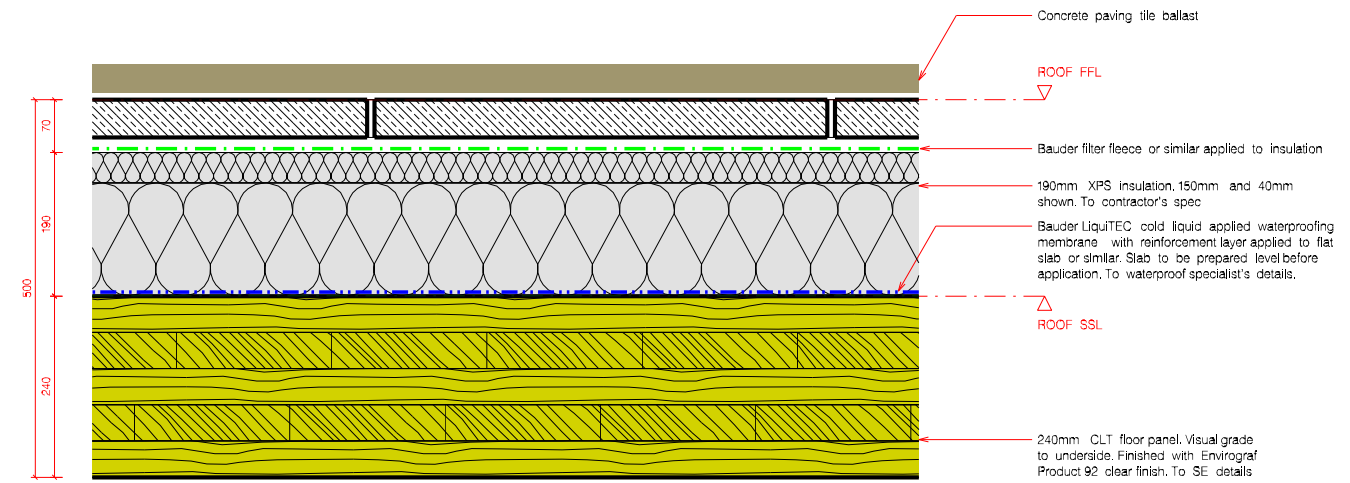
③ FIFTH FLOOR ROOF TERRACE BUILD UP – uVALUE 0.18 w/m²K



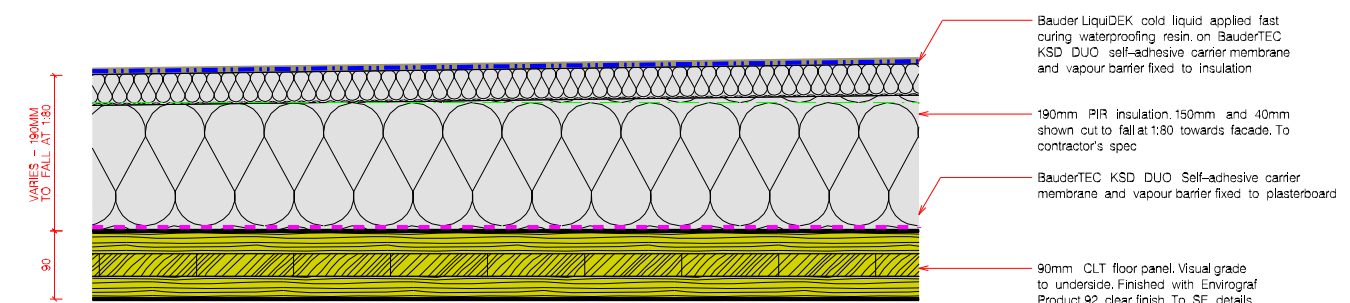
④ ROOF AT COLONNADE BUILD UP – uVALUE 0.18 w/m²K



⑤ GREEN ROOF BUILD UP – uVALUE 0.18 w/m²K



① ROOF BUILD UP – uVALUE 0.18 w/m²K



② FIFTH FLOOR ROOF BUILD UP AT CORNER – uVALUE 0.18 w/m²K

REVISION	PURPOSE (S1, S2, S3, S4, S5, S6 = Stage 1, 2, 3, 4, 5, 6, I = Information, C = Comment, P = Planning, T = Tender, S = Construction)	DATE	NOTES	CLIENT	PROJECT TITLE	DRAWING TITLE	REVISION	DATE	SCALE A1	SCALE A3
T1	ISSUED FOR TENDER	19.06.20	1. Contractors are not to directly scale off this drawing. Dimensions should be obtained from the Engineer or Architect, site checked and any discrepancy between drawings reported.	SEAFORTH LAND HOLDINGS LTD	20 - 23 GREVILLE STREET, LONDON, EC1N 8SS	ROOF BUILD UP DETAILS	T3	SEP 2020	1:5	1:10
T2	ISSUED FOR TENDER	17.07.20					DRAWING NO.	RURPOSE	DB	CB
T3	ISSUED FOR TENDER	15.09.20	2. The design and these drawings are the sole copyright of Amin Taha Architects, 15 Clerkenwell Close, London EC1R 0AA, T: 020 7253 8444 F: 020 7253 8555.				248 - 7000	T	AC	AT