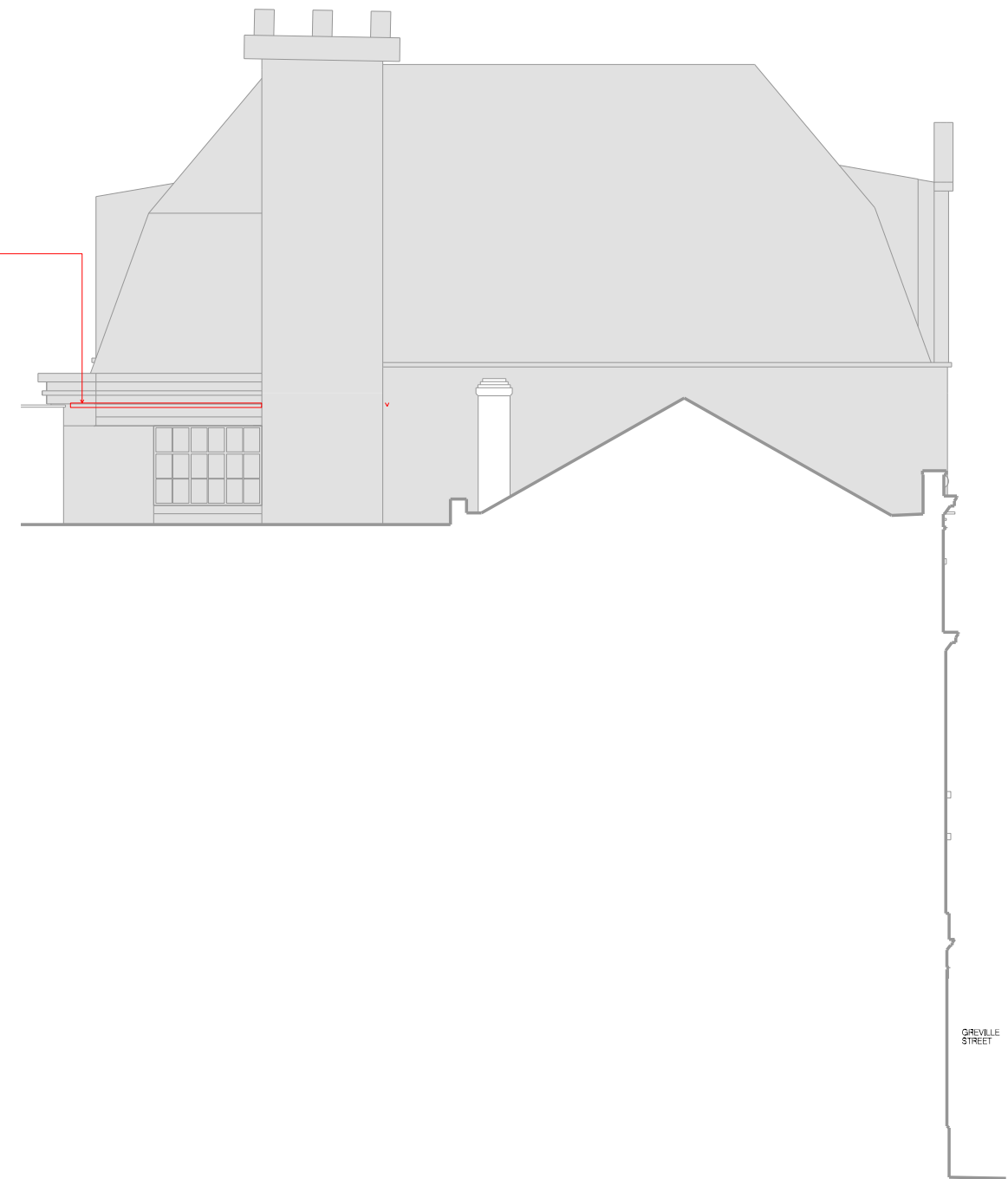


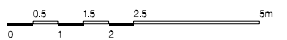


Perimeter drainage gutter fixed to
 CLT sloping roof to ensure water
 runoff. Drainage point to run
 through CLT structure and in
 floor voids at 10m floor level back to
 central riser
 150mm nominal half round gutter.
 Gutter to have overflow points at
 each end.



① NORTH ELEVATION

② EAST ELEVATION



GREVILLE STREET

REVISION	PURPOSE (S1, S2, S3, S4, S5, S6 = Stage 1, 2, 3, 4, 5, 6, I = Information, C = Comment, P = Planning, T = Tender, S = Construction)	DATE	NOTES	CLIENT	PROJECT TITLE	DRAWING TITLE	REVISION	DATE	SCALE A1	SCALE A3
11	ISSUED FOR TENDER	31.07.20	1. Contractors are not to directly scale off this drawing. Dimensions should be obtained from the Engineer or Architect, site checked and any discrepancy between drawings reported. 2. The design and these drawings are the sole copyright of Amin Taha Architects, 15 Clerkenwell Close, London EC1R 0AA, T. 020 7253 8444 F. 020 7253 8555.	GROUPWORK	SEAFORTH LAND HOLDINGS LTD	20 - 23 GREVILLE STREET, LONDON, EC1N 8SS	T2	NOV 2020	1:75	1:150
12	ISSUED FOR TENDER	13.11.20					248 - 1120	T	DB	AC