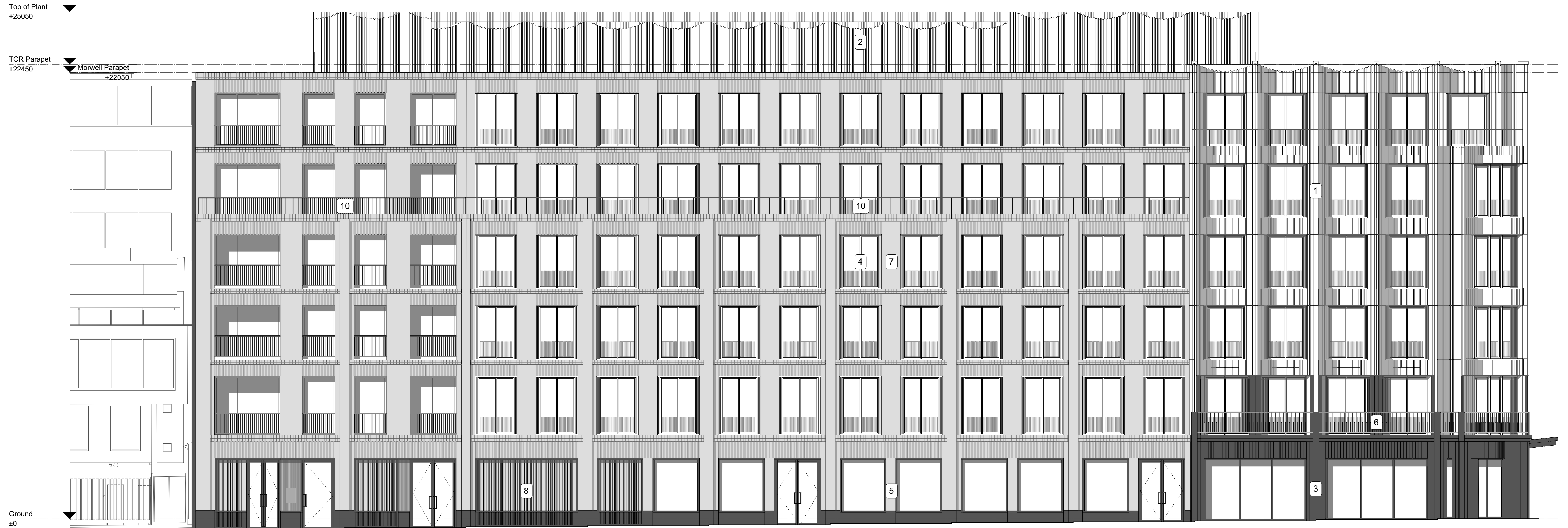


- MATERIALS**
1. GLAZED TERRACOTTA TILE
 2. PPC METAL SCALLOPED LOUVRED ROOF PLANT ENCLOSURE
 3. GREY BASALT STONE CLADDING
 4. GREY PPC ALUMINIUM WINDOWS WITH SIDE VENTS
 5. BLACK PPC ALUMINIUM SHOPFRONT WINDOWS
 6. STAINLESS STEEL BALUSTRADE
 7. GREY NARROW GAUGE BRICKWORK
 8. DARK GREY PPC METAL LOUVRED SCREEN
 9. DARK GREY PPC METAL CANOPY
 10. GREY PPC METAL BALUSTRADE



GENERAL NOTES:
 Do not scale from this drawing.
 Check drawing on receipt and immediately report any discrepancies to the Architect.
 Verify all dimensions and levels on site prior to construction.
 The contents of this drawing are Stiff + Trevillion Architects Ltd copyright and shall not be re-used without their written permission.

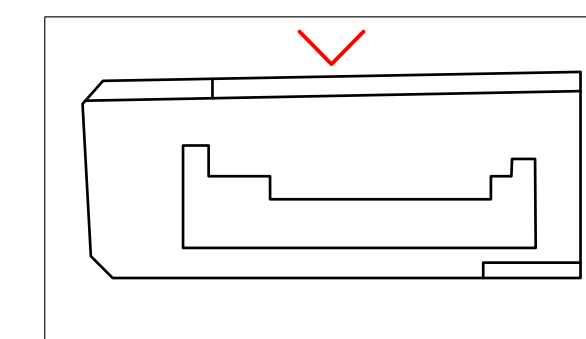
Revisions

Rev	Date	Note
A	4/11/20	

TERRACOTTA TO 5TH FLOOR TERRACE SET BACK IN LIEU OF BRICKWORK.
 BRICK PIERS ADDED TO 6M GRID UP TO 3RD FLOOR.
 STRING COURSES + PARAPET BRICK DETAILS ADDED.
 BASALT FLINTH EXTENDED ALONG MORWELL STREET.
 1ST FLOOR WINDOWS AMENDED.

Approved

Key Plan



Stiff + Trevillion

Stiff + Trevillion Architects Ltd
 16 Woodfield Road
 London W9 2BE

T +44(0)20 8960 5550
 mail@stiffandtrevillion.com
 www.stiffandtrevillion.com

Client

Prudential UK Real Estate Nominee 1 Ltd &
 Prudential Real Estate Nominee 2 Ltd

Project No.

4486

Project

247 Tottenham Court Road,
 W1T 7QZ

Drawing Title

Morwell Street
 East Elevation

Drawing Status

PLANNING

Date

04.11.20

Scale @ A1

1:100

Scale @ A3

1:200

Drawing No.

PR-ST-03-102

Revision

A