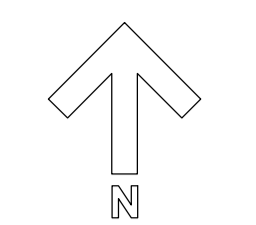


Floor description	Room number	Room type	Room sub type	Alternative room name	Net usable area
GROUND FLOOR	G001	RESIDENTIAL	BEDROOM	BEDROOM	14.4
GROUND FLOOR	G002	RESIDENTIAL	BEDROOM	BEDROOM	13.2
GROUND FLOOR	G003	RESIDENTIAL	BEDROOM	BEDROOM	9.3
GROUND FLOOR	G004	RESIDENTIAL	BEDROOM	BEDROOM	2.4
GROUND FLOOR	G005	BALANCE	BATH	BATH	1.5
GROUND FLOOR	G006	RESIDENTIAL	BEDROOM	BEDROOM	19.4
GROUND FLOOR	G007	RESIDENTIAL	KITCHEN/REP AREA	KITCHEN	18.4
GROUND FLOOR	G008	RESIDENTIAL	BEDROOM	BEDROOM	3.2
GROUND FLOOR	G009	RESIDENTIAL	BEDROOM	BEDROOM	22.4
GROUND FLOOR	G010	RESIDENTIAL	BEDROOM	BEDROOM	17.4
GROUND FLOOR	G011	RESIDENTIAL	BEDROOM	BEDROOM	18.4
GROUND FLOOR	G012	RESIDENTIAL	BEDROOM	BEDROOM	3.2
GROUND FLOOR	G013	RESIDENTIAL	BEDROOM	BEDROOM	2.4
GROUND FLOOR	G014	RESIDENTIAL	BEDROOM	BEDROOM	2.4
GROUND FLOOR	G015	RESIDENTIAL	BEDROOM	BEDROOM	2.4
GROUND FLOOR	G016	RESIDENTIAL	BEDROOM	BEDROOM	2.4
GROUND FLOOR	G017	RESIDENTIAL	BEDROOM	BEDROOM	2.4
GROUND FLOOR	G018	RESIDENTIAL	BEDROOM	BEDROOM	2.4
GROUND FLOOR	G019	RESIDENTIAL	BEDROOM	BEDROOM	2.4
GROUND FLOOR	G020	RESIDENTIAL	BEDROOM	BEDROOM	2.4
GROUND FLOOR	G021	RESIDENTIAL	BEDROOM	BEDROOM	2.4
GROUND FLOOR	G022	RESIDENTIAL	BEDROOM	BEDROOM	2.4
GROUND FLOOR	G023	RESIDENTIAL	BEDROOM	BEDROOM	2.4
GROUND FLOOR	G024	RESIDENTIAL	BEDROOM	BEDROOM	2.4
GROUND FLOOR	G025	RESIDENTIAL	BEDROOM	BEDROOM	2.4
GROUND FLOOR	G026	RESIDENTIAL	BEDROOM	BEDROOM	2.4
GROUND FLOOR	G027	RESIDENTIAL	BEDROOM	BEDROOM	2.4
GROUND FLOOR	G028	RESIDENTIAL	BEDROOM	BEDROOM	2.4
GROUND FLOOR	G029	RESIDENTIAL	BEDROOM	BEDROOM	2.4
GROUND FLOOR	G030	RESIDENTIAL	BEDROOM	BEDROOM	2.4
GROUND FLOOR	G031	RESIDENTIAL	BEDROOM	BEDROOM	2.4
GROUND FLOOR	G032	RESIDENTIAL	BEDROOM	BEDROOM	2.4
GROUND FLOOR	G033	RESIDENTIAL	BEDROOM	BEDROOM	2.4
GROUND FLOOR	G034	RESIDENTIAL	BEDROOM	BEDROOM	2.4
GROUND FLOOR	G035	RESIDENTIAL	BEDROOM	BEDROOM	2.4
GROUND FLOOR	G036	RESIDENTIAL	BEDROOM	BEDROOM	2.4
GROUND FLOOR	G037	RESIDENTIAL	BEDROOM	BEDROOM	2.4
GROUND FLOOR	G038	RESIDENTIAL	BEDROOM	BEDROOM	2.4
GROUND FLOOR	G039	RESIDENTIAL	BEDROOM	BEDROOM	2.4
GROUND FLOOR	G040	RESIDENTIAL	BEDROOM	BEDROOM	2.4
GROUND FLOOR	G041	RESIDENTIAL	BEDROOM	BEDROOM	2.4
GROUND FLOOR	G042	RESIDENTIAL	BEDROOM	BEDROOM	2.4
GROUND FLOOR	G043	RESIDENTIAL	BEDROOM	BEDROOM	2.4
GROUND FLOOR	G044	RESIDENTIAL	BEDROOM	BEDROOM	2.4
GROUND FLOOR	G045	RESIDENTIAL	BEDROOM	BEDROOM	2.4
GROUND FLOOR	G046	RESIDENTIAL	BEDROOM	BEDROOM	2.4
GROUND FLOOR	G047	RESIDENTIAL	BEDROOM	BEDROOM	2.4
GROUND FLOOR	G048	RESIDENTIAL	BEDROOM	BEDROOM	2.4
GROUND FLOOR	G049	RESIDENTIAL	BEDROOM	BEDROOM	2.4
GROUND FLOOR	G050	RESIDENTIAL	BEDROOM	BEDROOM	2.4
GROUND FLOOR	G051	RESIDENTIAL	BEDROOM	BEDROOM	2.4
GROUND FLOOR	G052	RESIDENTIAL	BEDROOM	BEDROOM	2.4

GROUND FLOOR	G53	RESIDENTIAL	BEDROOM	STUDY BEDROOM	11.8
GROUND FLOOR	G54	RESIDENTIAL	BEDROOM	STUDY BEDROOM	11.8
GROUND FLOOR	G55	RESIDENTIAL	BEDROOM	STUDY BEDROOM	11.8
GROUND FLOOR	G56	RESIDENTIAL	BEDROOM	STUDY BEDROOM	11.8
GROUND FLOOR	G57	RESIDENTIAL	BEDROOM	STUDY BEDROOM	11.8
GROUND FLOOR	G58	RESIDENTIAL	BEDROOM	STUDY BEDROOM	11.8
GROUND FLOOR	G59	RESIDENTIAL	BEDROOM	STUDY BEDROOM	11.8
GROUND FLOOR	G60	RESIDENTIAL	BEDROOM	STUDY BEDROOM	11.8
GROUND FLOOR	G61	RESIDENTIAL	BEDROOM	STUDY BEDROOM	11.8
GROUND FLOOR	G62	RESIDENTIAL	BEDROOM	STUDY BEDROOM	11.8
GROUND FLOOR	G63	RESIDENTIAL	BEDROOM	STUDY BEDROOM	11.8
GROUND FLOOR	G64	BALANCE	COMBINED BALANCE AREA	LOBBY & STAIR	23.1
GROUND FLOOR	G65	BALANCE	LIFT	LIFT	4.1
GROUND FLOOR	G66	BALANCE	WC	SHOWER	2.0
GROUND FLOOR	G67	BALANCE	BATHROOM	BATH	3.2
GROUND FLOOR	G68	BALANCE	LOBBY	LOBBY	1.2
GROUND FLOOR	G69	BALANCE	WC	WC	1.8
GROUND FLOOR	G70	RESIDENTIAL	RESIDENTIAL	LAUNDRY	14.2
GROUND FLOOR	G71	RESIDENTIAL	RESIDENTIAL	IRONING ROOM	3.2
GROUND FLOOR	G72	RESIDENTIAL	RESIDENTIAL	DRYING ROOM	4.4
GROUND FLOOR	G73	BALANCE	COMBINED BALANCE AREA	ENTRANCE HALL & CORRIDOR	28.1
GROUND FLOOR	G74	BALANCE	CORRIDOR	CORRIDOR	3.1

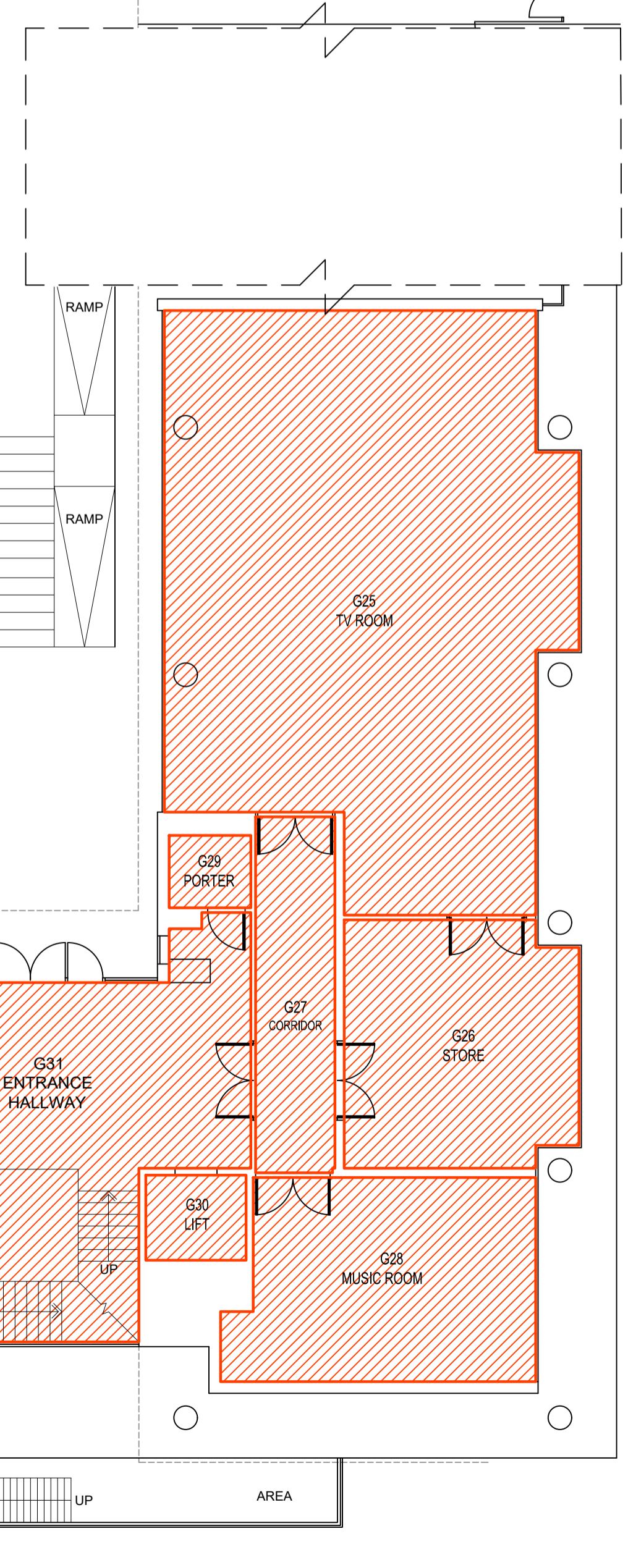
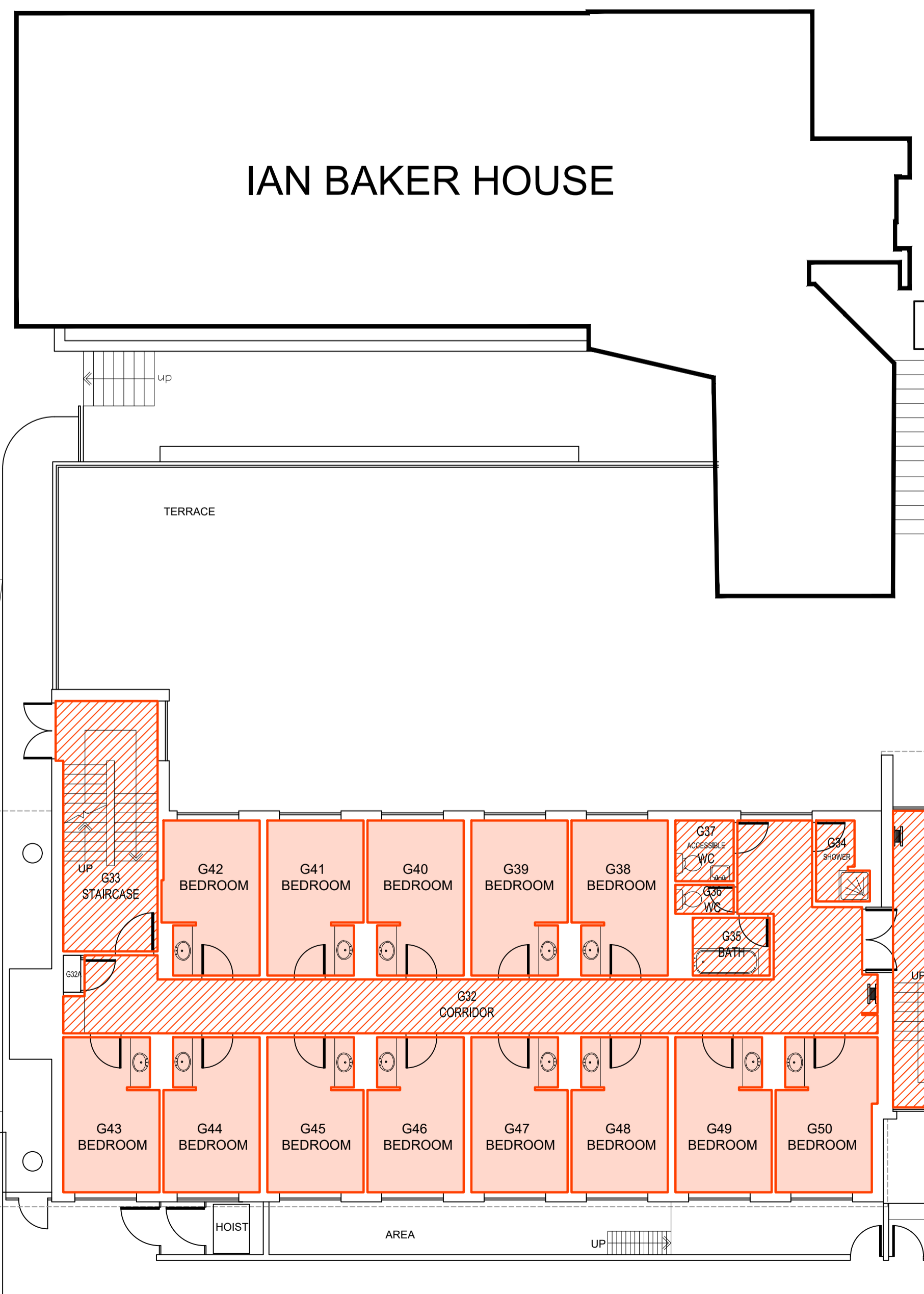
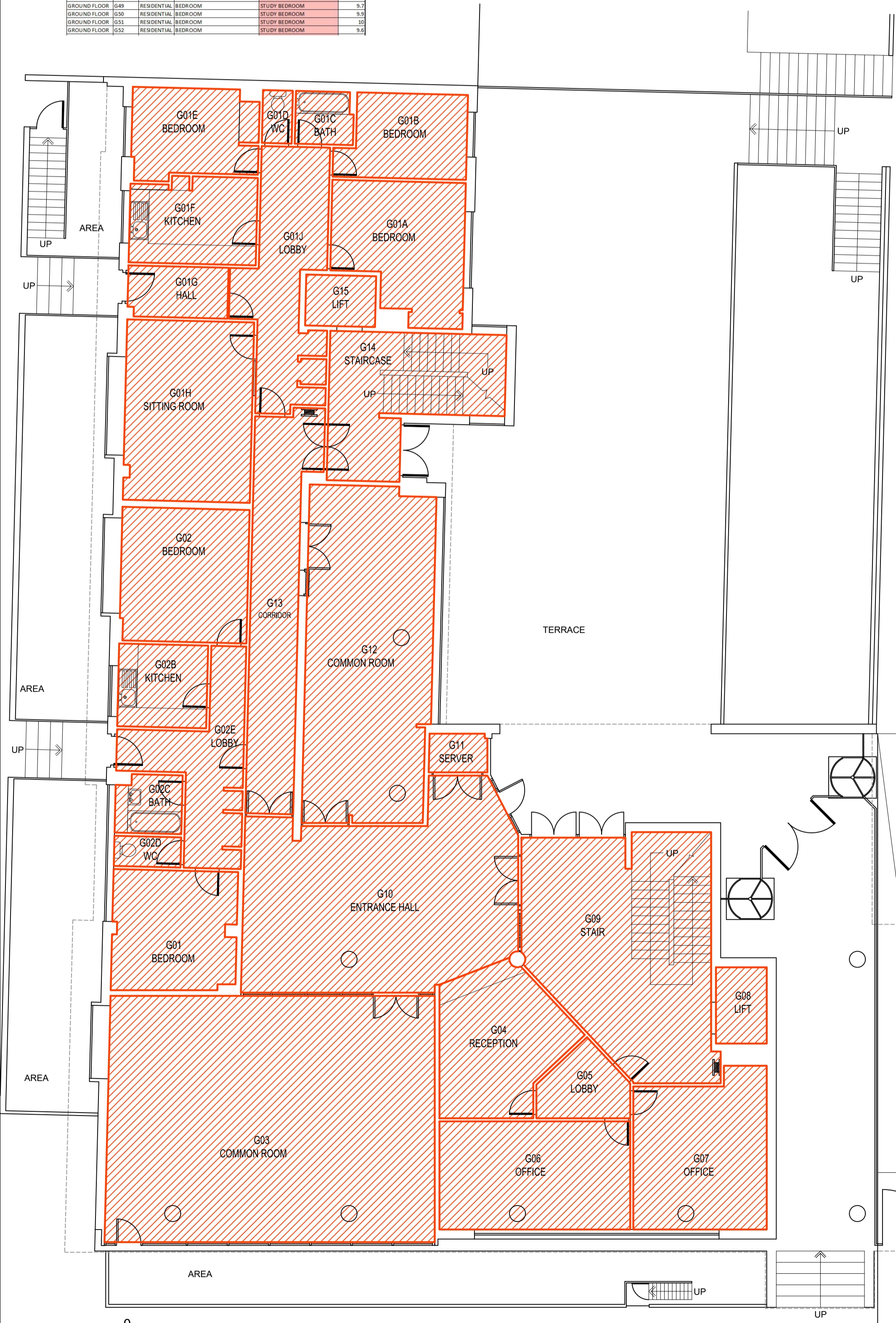
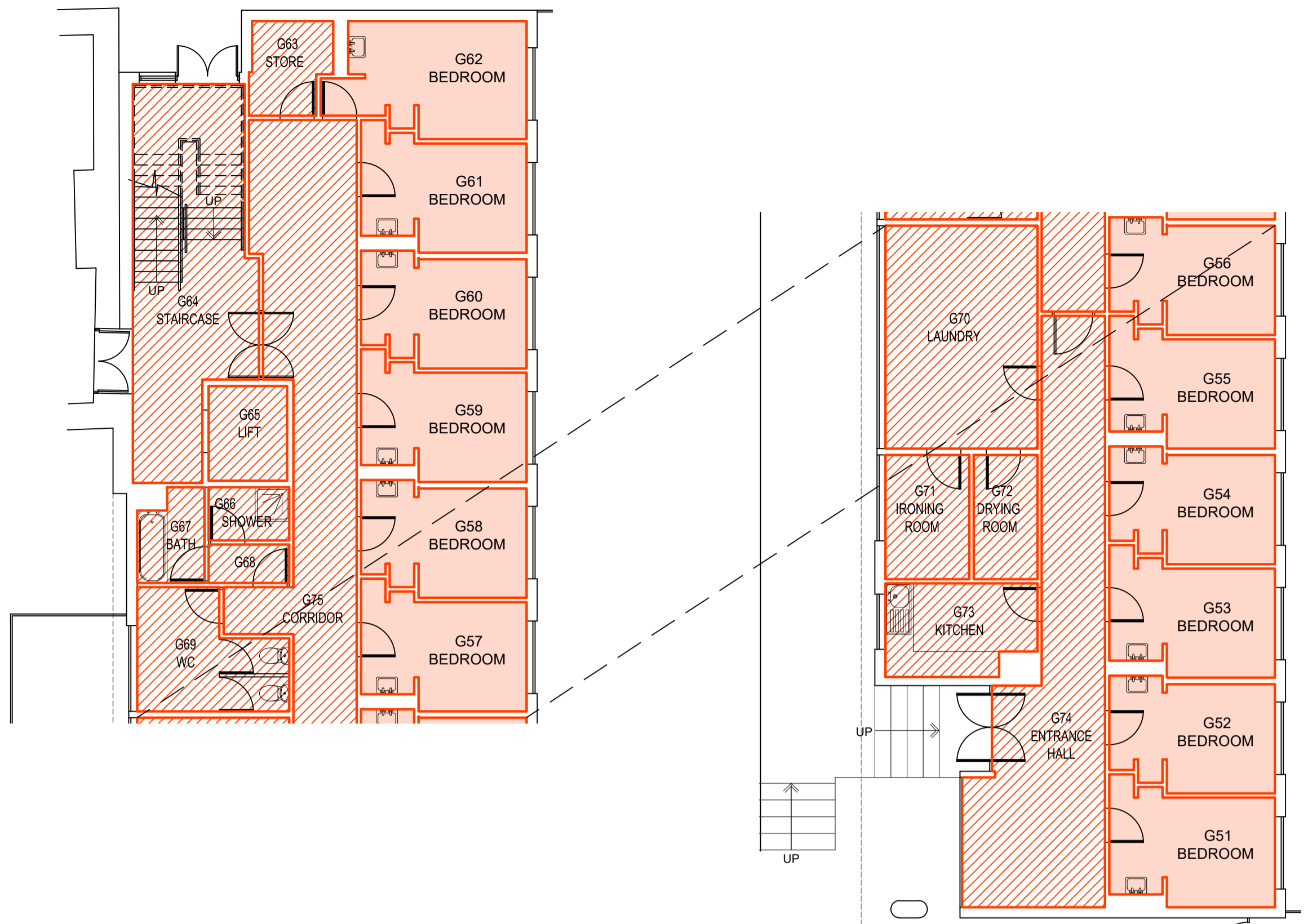
NOTES
 DO NOT SCALE OFF THIS DRAWING.
 ALL DIMENSIONS MUST BE CHECKED ON SITE
 PRIOR TO ANY WORK BEING PUT IN HAND.
 ANY DISCREPANCIES ARE TO BE BROUGHT TO
 THE ATTENTION OF THE PROJECT MANAGER
 IMMEDIATELY UPON DISCOVERY.



FLOOR GIA = 12111m²

- EXISTING STUDENT ACCOMMODATION = 244.7m²
- ANCILLARY SPACES = 901.8m²

TOTAL = 1146.5m²



IAN BAKER HOUSE

PLANNING APPLICATION

Rev. Date Description

UCL ESTATES
 GOWER STREET, LONDON WC1E 6BT

UCL

University College London
 38-50, Bedford Street, London WC1H 9BT

Project Officer: Name
 Tel: 020 7679 x
 Fax: 020 7813 0524
 Email: @ucl.ac.uk

Drawn: Name
 Date:
 Scale: 1:100 @ A1
 PROJECT No.

Ramsay Hall
 (London, Paris, New York)
 20, Maple Street

Change of Use

Existing Ground Floor Plan

DWG. NO. **055-E-G** rev