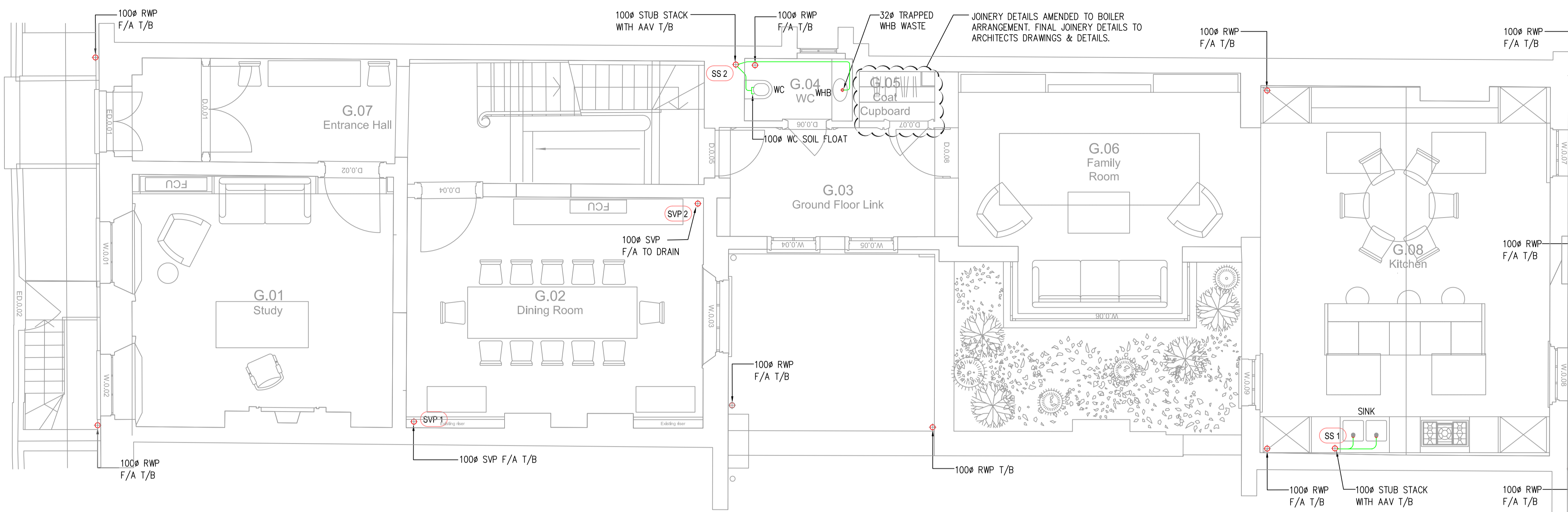


NOTES

- WHB - 300 TRAPPED WASTE
- SHR - 400 TRAPPED WASTE WITH TOP RODDING ACCESS
- BATH - 400 TRAPPED WASTE
- WC - 1000 SOIL PIPE
- WM - 400 TRAPPED STANDPIPE
- SINK - 400 TRAPPED WASTE
- DW - 400 TRAPPED STANDPIPE
- CYL - 400 TRAPPED STANDPIPE
- BOILER - 300 HEPVO DRY TRAPPED STANDPIPE

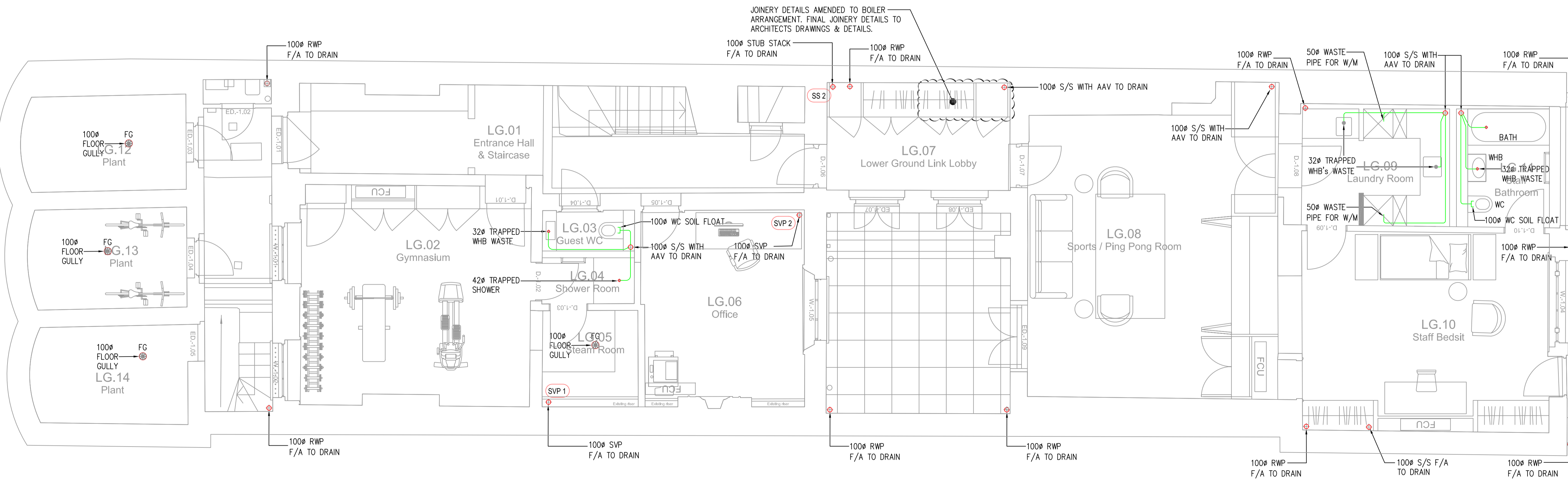
LEGEND

- PIPEWORK AT HIGH LEVEL
- PIPEWORK AT LOW LEVEL
- BELOW GROUND RAINAGE
- AAV - AIR ADMITTANCE VALVE
- CYL - CYLINDER
- DW - DISHWASHER
- FA - FROM ABOVE
- FCU - FAN COIL UNIT
- FG - FLOOR GULLY
- H/L - HIGH LEVEL
- L/L - LOW LEVEL
- RE - RODDING EYE
- RWO - RAIN WATER OUTLET
- RWP - RAIN WATER PIPE
- SHR - SHOWER
- SS - STUB STACK
- SVP - SOIL VENT PIPE
- T/A - TO ABOVE
- T/B - TO BELOW
- VP - VENT PIPE
- WC - WATER CLOSET
- WHB - WASH HAND BASIN
- WM - WASHING MACHINE
- WP - WASTE PIPE



GROUND FLOOR PLAN

BWIC NOTE
 USE OF EXISTING NOTCHES AND JOISTS TO BE USED WHERE PRACTICAL. ANY NEW NOTCH AND HOLES WILL BE CARRIED OUT IN ACCORDANCE TO LISTED BUILDING REGULATIONS AND STRUCTURAL ENGINEER'S DETAILS



LOWER GROUND FLOOR PLAN

Note
 ALL DIMENSIONS TO BE VERIFIED ON SITE BEFORE SETTING OUT OR MAKING ANY SHOP DRAWINGS. THIS DRAWING IS TO BE READ IN CONJUNCTION WITH THE CONSULTANT ENGINEER'S SPECIFICATION.

Orientation

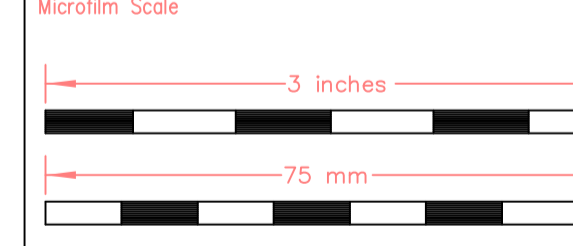
ref./date	REVISIONS
P 04.06.20	PRELIMINARY ISSUE FOR COMMENT
P1 19.06.20	PRELIMINARY ISSUE, AMENDED TO SUIT LATEST GA'S
P2 09.07.20	PRELIMINARY ISSUE, AMENDED TO SUIT LATEST GA'S
P3 15.09.20	PLANNING ISSUE
P4 24.09.20	PLANNING ISSUE
P5 09.11.20	PLANNING ISSUE AMENDED TO SUIT LATEST GA'S

FOR PLANNING

KUT
 KUT LLP
 First Floor
 2E Berol House
 25 Ashley Road
 London
 N17 9LJ
 Tel: +44(0)20 8348 5171
 Fax: +44(0)20 8340 8926
 Email: tkp@kut.co.uk
 Web: www.kut.co.uk

Description
 LOWER GROUND AND GROUND FLOOR PUBLIC HEALTH SERVICES ABOVE GROUND DRAINAGE

Project
 55 CUMBERLAND TERRACE
 CAMDEN, LONDON
 NW1 4HJ



Architect
 COLLETT-ZARZYCKI Ltd
 Fernhead Studios, 2B
 Fernhead Road, London W9 3ET
 Tel: +44(0)20 8969 6967
 Email: mail@czltd.co.uk

ref 55CT - GA - (20-11-06)
Scale A1@1:50
Date June 2020
Issue PRELIMINARY

Project No.	Services	Dwg No.	Rev.
6618	PH	101	P5

Lower Ground & Ground