


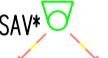



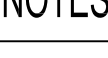


LEGEND

-  CENTRAL MEV UNIT - SYSTEM 3 VENTILATION
-  CENTRAL MVHR UNIT - SYSTEM 4 VENTILATION
NOTE: LOWER GROUND FLOOR ONLY
-  EXTRACT AIR VALVE
-  FRESH AIR SUPPLY VALVE
-  RECTANGULAR VENTILATION DUCTWORK
SUPPLY
EXTRACT
-  DUCTED COOKERHOOD
-  MVHR/MEV UNIT BOOST SWITCH
-  FIRE BREAK

NOTES

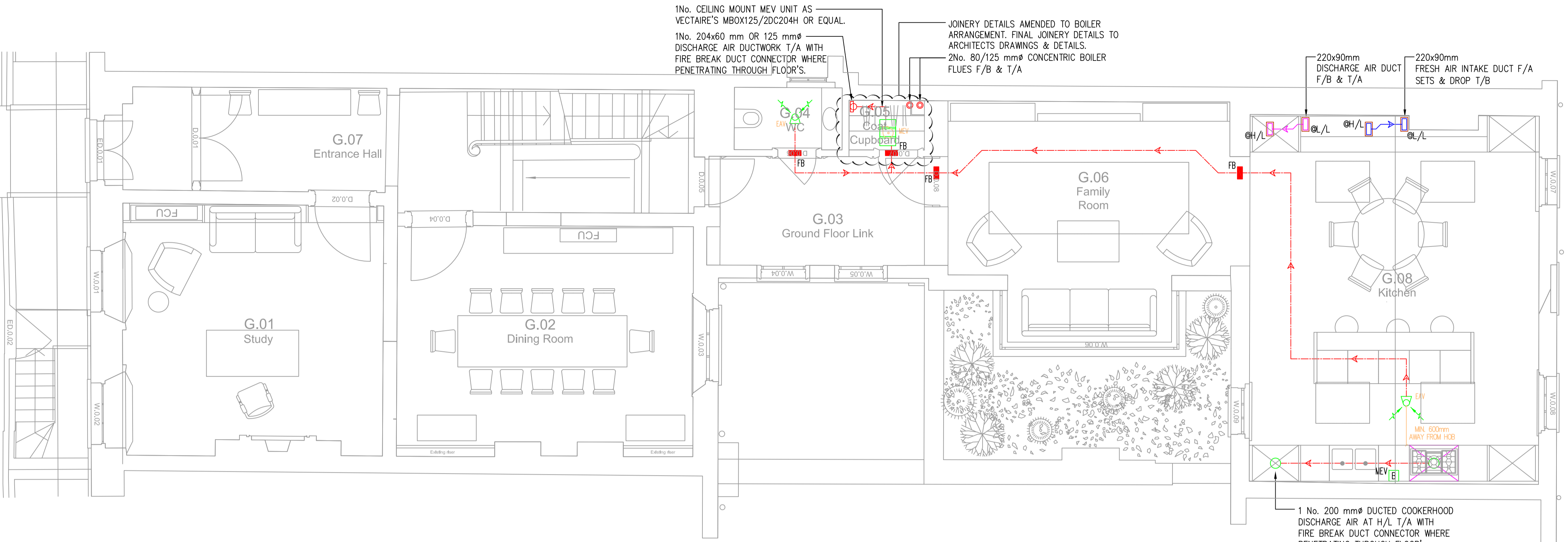
1. FOR EXACT FLOOR FINISHES REFER TO INTERIOR DESIGNER/ARCHITECTS DRAWINGS.
2. FINAL LOCATIONS OF AIR VALVES TO BE AGREED WITH ARCHITECT.
3. FINAL LOCATION OF MVHR & MEV BOOST SWITCHES TO BE AGREED WITH ARCHITECT.
4. FIRE BREAK 2 HR AS SUPPLIED BY DOMUS OR EQUAL & APPROVED TO BE PROVIDED WHERE PASSING THROUGH FIRE RATED WALLS & FLOORS.
5. VENTILATION DUCTWORK SHALL BE INSTALLED WITH FIRE BREAK DUCT CONNECTOR WHERE PENETRATING THROUGH FLOORS & ROOF.

BWIC NOTE

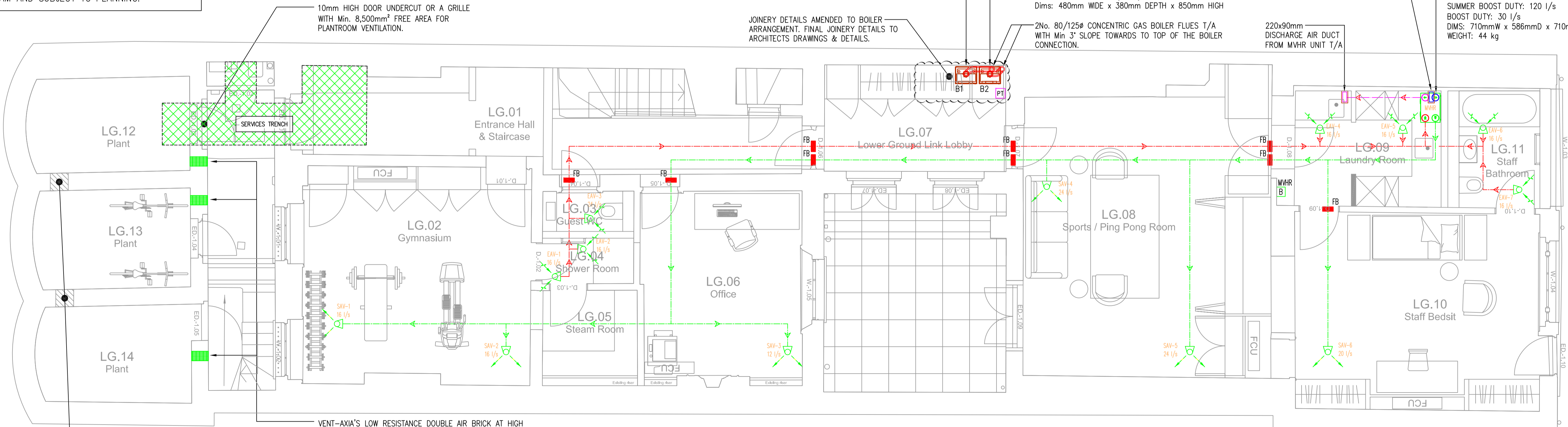
USE OF EXISTING NOTCHES AND JOISTS TO BE USED WHERE PRACTICAL. ANY NEW NOTCH AND HOLES WILL BE CARRIED OUT IN ACCORDANCE TO LISTED BUILDING REGULATIONS AND STRUCTURAL ENGINEER'S DETAILS

DESIGN NOTE

DRAWING ISSUE FOR DESIGN INTENT DEVELOPMENT. FINAL LOCATION OF AIR VALVES VENTILATION END POSITIONS, IN PARTICULAR ILLUSTRATED AT THE EXTERNAL FACADES AND ROOF TO BE AGREED WITH PROJECT DESIGN TEAM AND SUBJECT TO PLANNING.



GROUND FLOOR PLAN



LOWER GROUND FLOOR PLAN

Note
ALL DIMENSIONS TO BE VERIFIED ON SITE BEFORE SETTING OUT OR MAKING ANY SHOP DRAWINGS. THIS DRAWING IS TO BE READ IN CONJUNCTION WITH THE CONSULTANT ENGINEER'S SPECIFICATION.

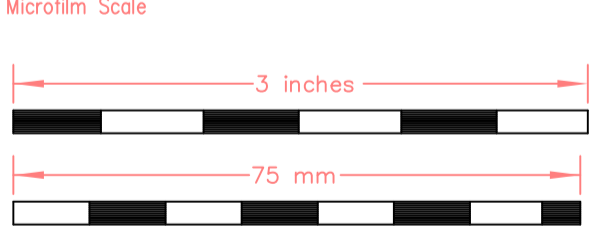
ref./date	REVISIONS
P 15.09.20	PLANNING ISSUE
P1 24.09.20	PLANNING ISSUE
P2 09.11.20	PLANNING ISSUE AMENDED TO SUIT LATEST GA'S

FOR PLANNING

KUT
KUT LLP
First Floor
25 Berol House
25 Ashley Road
London
N17 9LJ
Tel: +44(0)20 8348 5171
Fax: +44(0)20 8340 8926
Email: tkp@kut.co.uk
Web: www.kut.co.uk

Description
LOWER GROUND AND GROUND FLOOR MECHANICAL SERVICES VENTILATION

Project
55 CUMBERLAND TERRACE CAMDEN, LONDON NW1 4HJ



Architect
COLLETT-ZARZYCKI Ltd
Fernhead Studios, 2B
Fernhead Road, London W9 3ET
Tel: +44(0)20 8969 6967
email: mail@czltd.co.uk

Scale	A1@1:50	Drawn	SAS
Date	Sep 2020	Checked	

Issue
PRELIMINARY

Project No.	Services	Dwg No.	Rev.
6618	M	112	P2

Lwr Grd & Grd