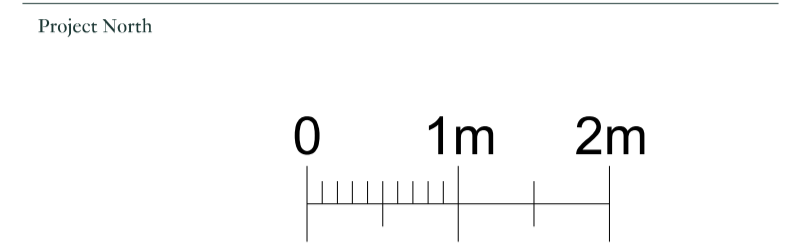
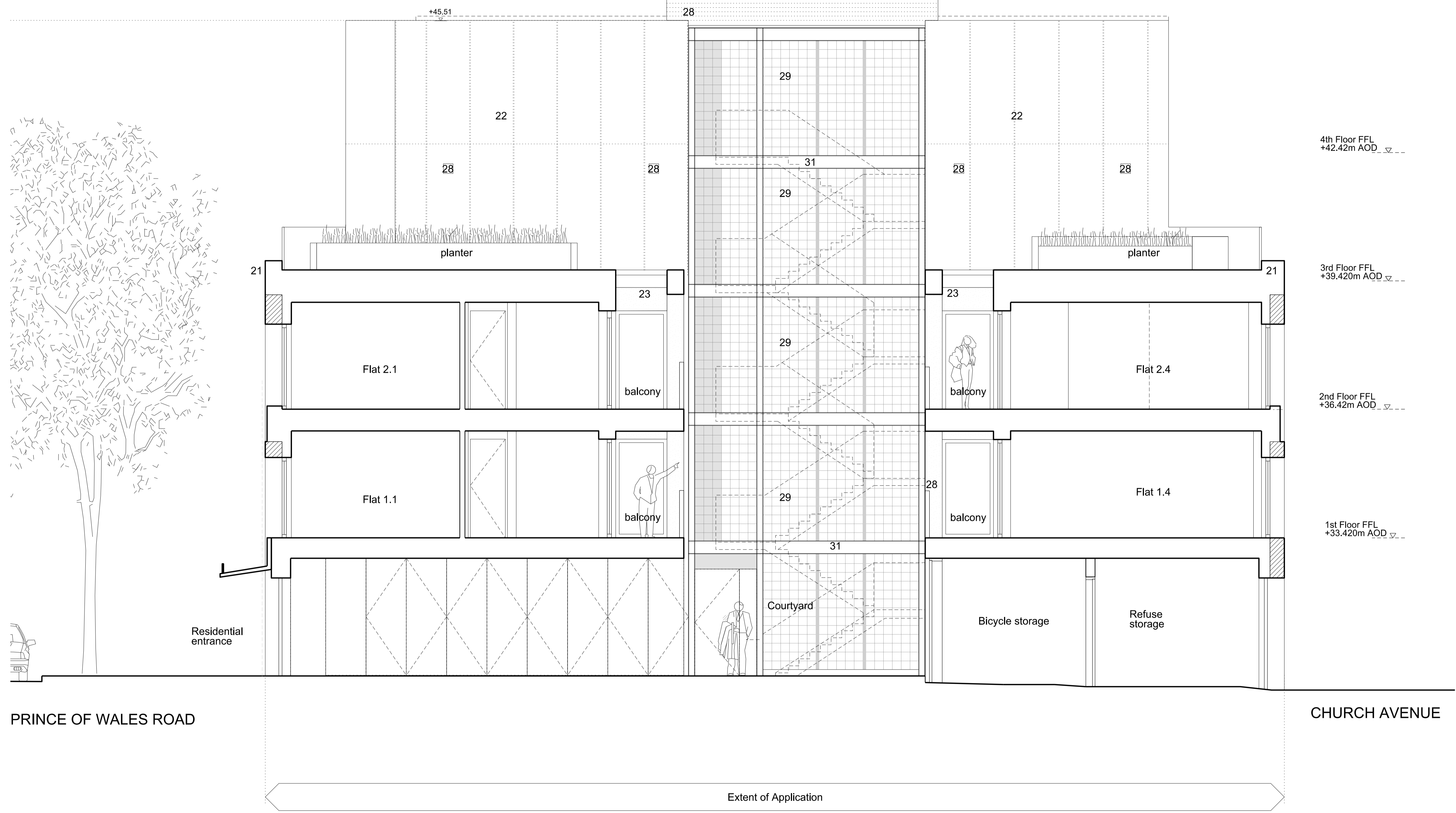
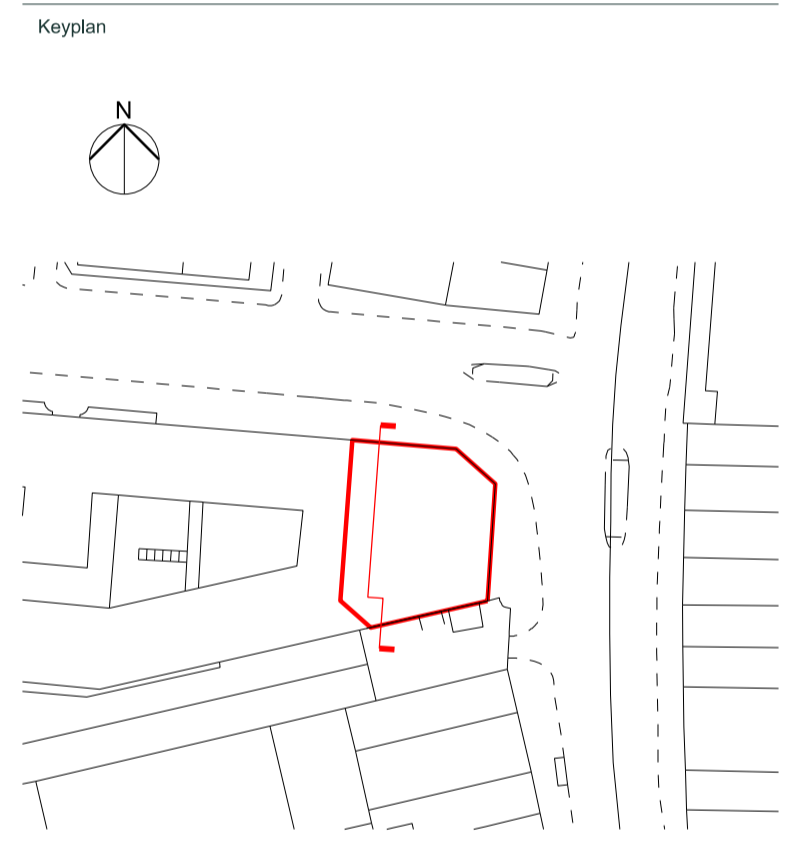


General Notes
 The drawing is copyright of Vabel LTD. All rights reserved. No reproduction in any material form is permitted without consent.
 Do not scale from this drawing. All dimensions are in mm unless otherwise stated. All dimensions, levels, sizes, positions and locations of particulars as indicated on drawings are to be verified by the contractor on site prior to engaging in works.
 This drawing may incorporate information from other professionals. Vabel LTD cannot accept responsibility for the integrity and accuracy of such information. The specification is to be read in conjunction with the plans/section details and other associated structural details as may be provided. Any discrepancies to be reported to the architect/surveyor/engineer or responsible person/s immediately.
 All works shall conform to the current editions of the building regulations and other statutory requirements. All materials and workmanship shall conform with the relevant British Standard specifications and codes of practice. If this drawing forms part of an application for planning permission, it shall not be used for any other purpose without the express permission of Vabel LTD.
 The contractor is responsible for ensuring compliance with the CDM regulations and appropriate health and safety on site precautions. The client / building owner must obtain any necessary party wall agreements prior to engaging in works on site.

KEY TO EXISTING RETAINED OR RESTORED MATERIALS:		KEY TO PROPOSED MATERIALS:	
1. Dark brick wall (Flemish Bond) - Existing bricks cleaned & reused Imperial specials by Freshfield Lane (Sussex) where required.	8. Steel balustrade - removed	20. Powder coated spandrel - Adapta-Gaelic	24. Brick
2. Light brick string course (Soldier & flemish bonds) Sussex Orange brick retained or restored with handmade specials by Sussex Handmade.	9. Cast iron down pipe - refurbished and repainted black	21. Cast stone with detailing - Grecon Stone - Portland	25-A W20 Steel framed windows in PPC Black with slim double glazing.
3. Plain- tiled corner window surround Ketley Red, Brown Brindle Mix to match existing.	10. Orange brick window surround - Sussex Handmade Orange specials to match existing	22. Powder coated - Adapta - Gaelic	25- B Aluminium double glazed windows - Powder coated in grey/brown RAL 7022 to match cladding
4. Glazed windows - removed as part of consented works	11. Star shaped glazing bars - removed	23. Render - 1.5mm grain size Colour Off-white	26. Glass balustrade with discrete Aluminium capping - Powdercoated Adapta -Gaelic.
5. Cast Stone - Grecon- Portland	12. Concrete coping - removed	24. Cast Iron Air Brick - Natural finish (rust brown)	27. Powder coated aluminium
6. New Timber and glass door - Black stain hardwood	13. Cast stone (Cornice and pediment) - Grecon Cast stone - Portland	28. RAL 7022 Grey/Brown to match cladding	29. Glass Block - Seves - Style:884 ALpha
7. Glass sky-light.	14. Existing concrete and Stucco rendered features cleaned and restored	30. Canopy - Powder coated metal with backlit signage	31. Black painted decorative steelwork



Rev	Date	Reason For Issue	Chk
P5	09/11/19	Condition Discharge	NE
P4	11/11/19	Planning Application	NE
P3	10/05/18	Planning Application	SE



VABEL
 LONDON
 531 Highgate Studios
 53-79 Highgate Road, London NW5 1TL
 +44 (0)20 7183 6405
 www.vabel.co.uk

Project
187 Kentish Town Road, NW1

Title
Proposed Section B - B

Status		
PLANNING		
Project Number	Date	Checked By
1804	22/08/2018	NE
Revision	Scale @ ISO A1	Approved By
P5	1:50	Vabel
Drawing Number		
863_07_311		