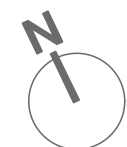


HHH1 HILL HOUSE HAMPSTEAD 87 REDINGTON ROAD NW3
1. EXTANT PERMISSION FOR ANNEXE BUILDING 2014/7140/P





Rev C

Revised external outline:

- Arcaded terrace added on the North side
- Building footprint amended as shown

Revised internal layout:

- Reduce of GIA from 169sqm(revB) to 150sqm(rev C)

Rev B - 091009

Dining room and kitchen moved west to protect root ball of poplar T6. Dining room reduced north by 500 mm. Hall widened.

Glass link removed.

South extension cut back to protect root ball of oak T11.

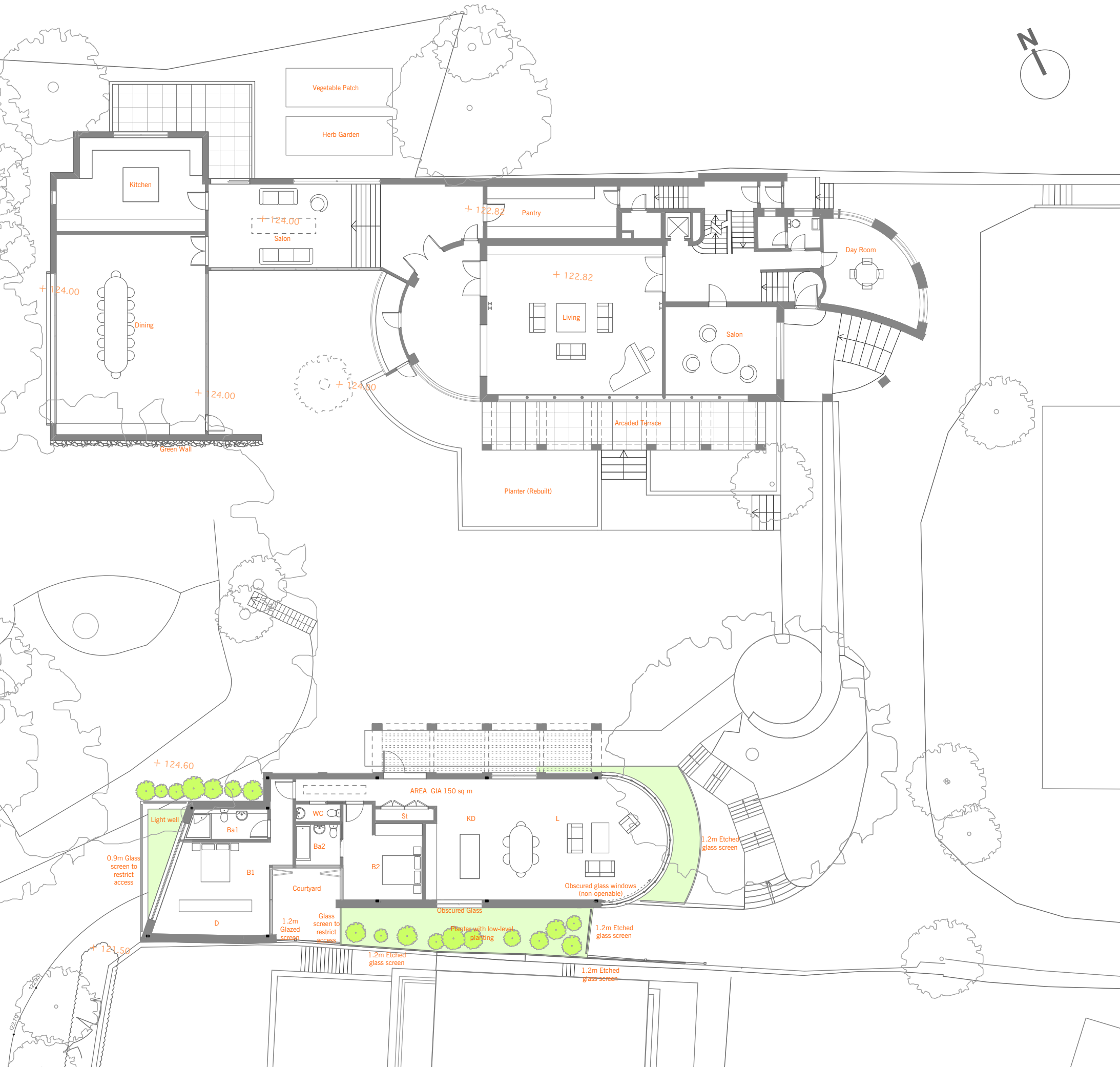
Rev A

Non-accessible low level planter added to south of annex.

1.2m glazed screens added to prevent access and overlooking to no 85A.

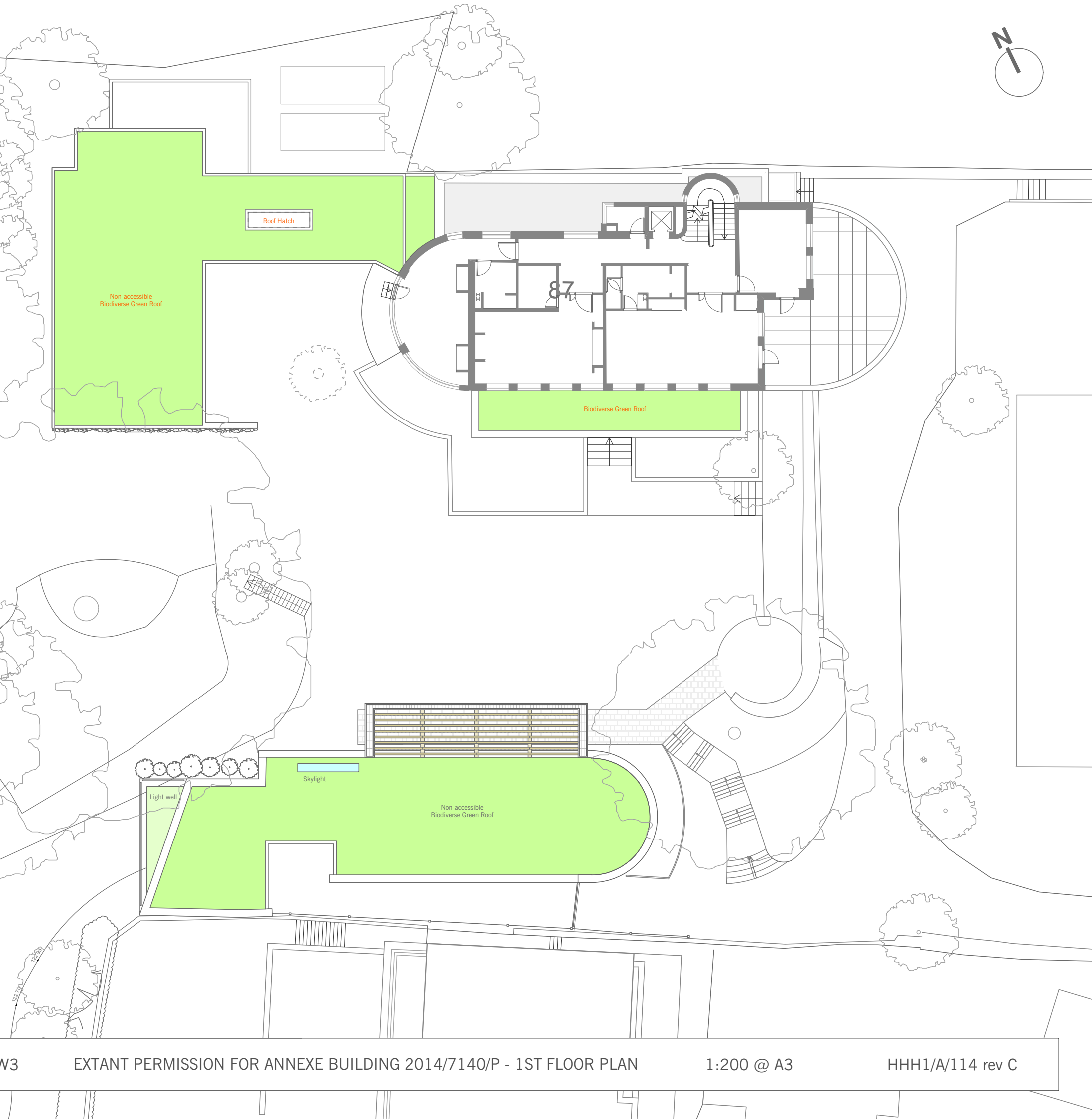
1/3 of library window specified obscured glass and non-openable.

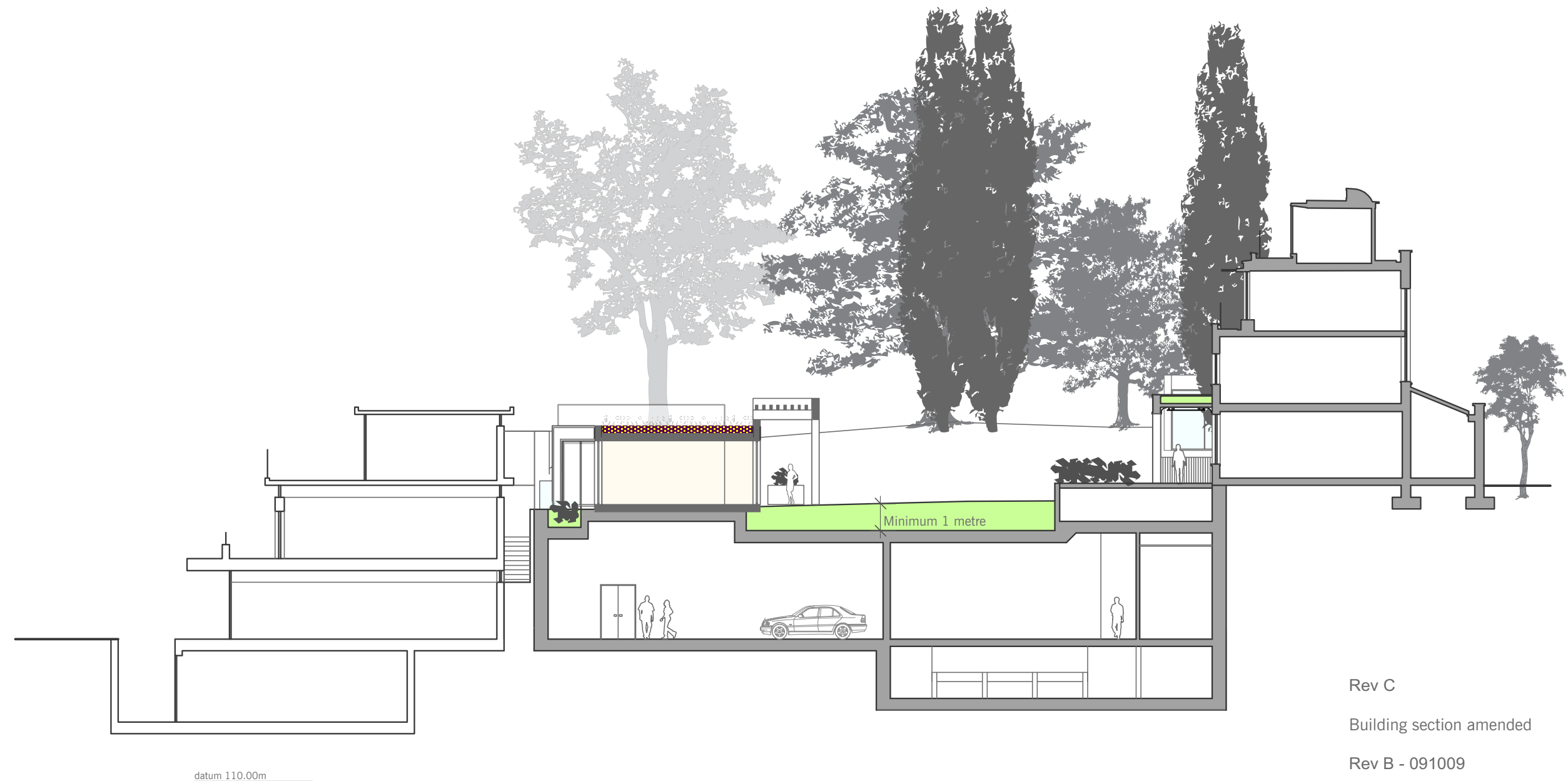
Picture window added to west elevation of rear extension.





Rev C - 081014
Outline of proposed extension revised.
Rev B - 091009
Glass link removed.
Roof of proposed extension revised.
Rev A
Planters added to annex roof.
Glazed screen added to annex roof to prevent access.





Rev C

Building section amended

Rev B - 091009

Centre landscape depth increased.

Rev A

Non-accessible low level planter added to south of annex.

1.2m glazed screens added to prevent access and overlooking to no 85A.

1/3 of library window specified obscured glass and non-openable.

Planters and guarding added to roof of annex at rear.

MATERIALS LEGEND

- 1. Vertical red bricks to match existing
- 2. New planting
- 3. Oak doors
- 4. White render
- 5. Cast iron safety railings
- 6. 1.2M Etched glass screen



Rev D - 081014

Outline of proposed extension revised.
Rev C - 161109

Materials to entrance of car park indicated.

Rev B - 091009

Rev A
Dining room reduced north by 500 mm.

Non-accessible low level planter added to south of annex.

1.2m glazed screens added to prevent access and overlooking.

1/3 of library window specified obscured glass and non-openable.

Planters and guarding added to roof of annex at rear.

MATERIALS LEGEND

- 1. White render
- 2. Green wall
- 3. 1.2M Etched glass screen
- 4. Vertical red bricks to match existing



datum 110.00m

Rev C - 081014

Outline of proposed extension revised.
Rev B - 091009

Dining room reduced north by 500mm.

Kitchen moved north.

Site fence of north boundary to 89 Redington Road indicated.
Rev A

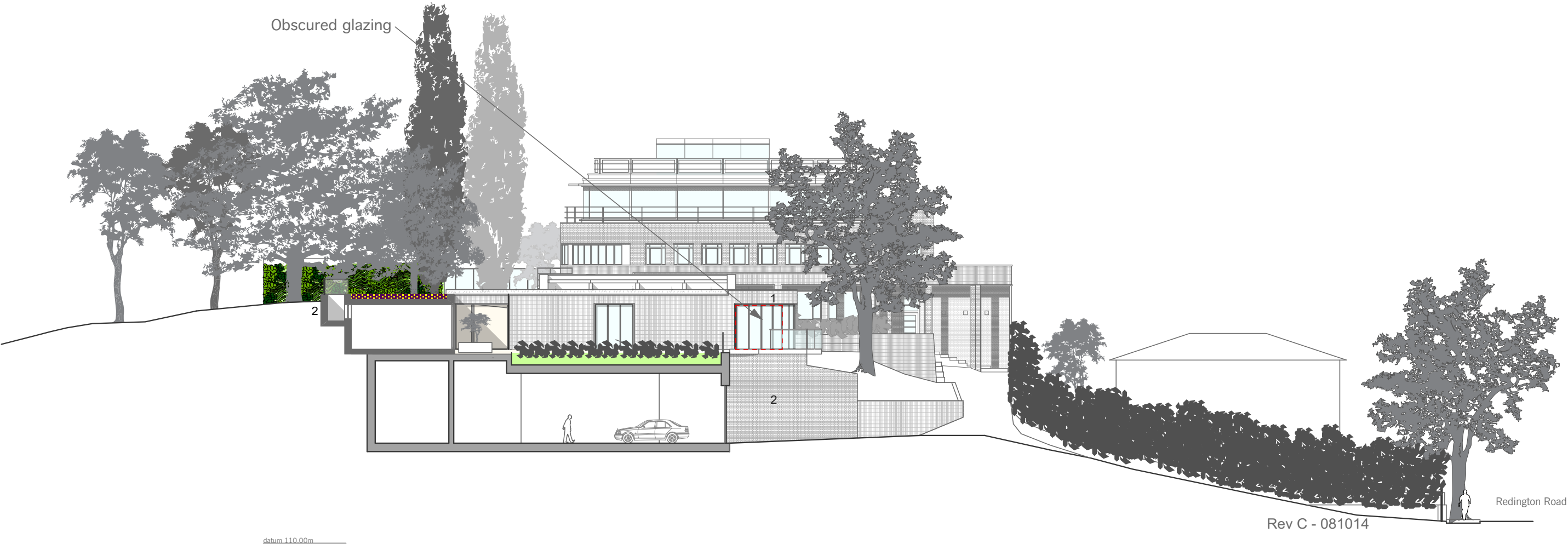
Planters and guarding added to roof of annex to make it non-accessible.

Picture window added to west elevation of rear extension.

Context of 85A added to drawing.

MATERIALS LEGEND

- 1. Vertical red bricks to match existing
- 2. New retaining wall



Rev C - 081014

Outline of proposed extension revised.

Rev B - 091009

Basement level lowered.

Rev A

Non-accessible low level planter added to south of annex.

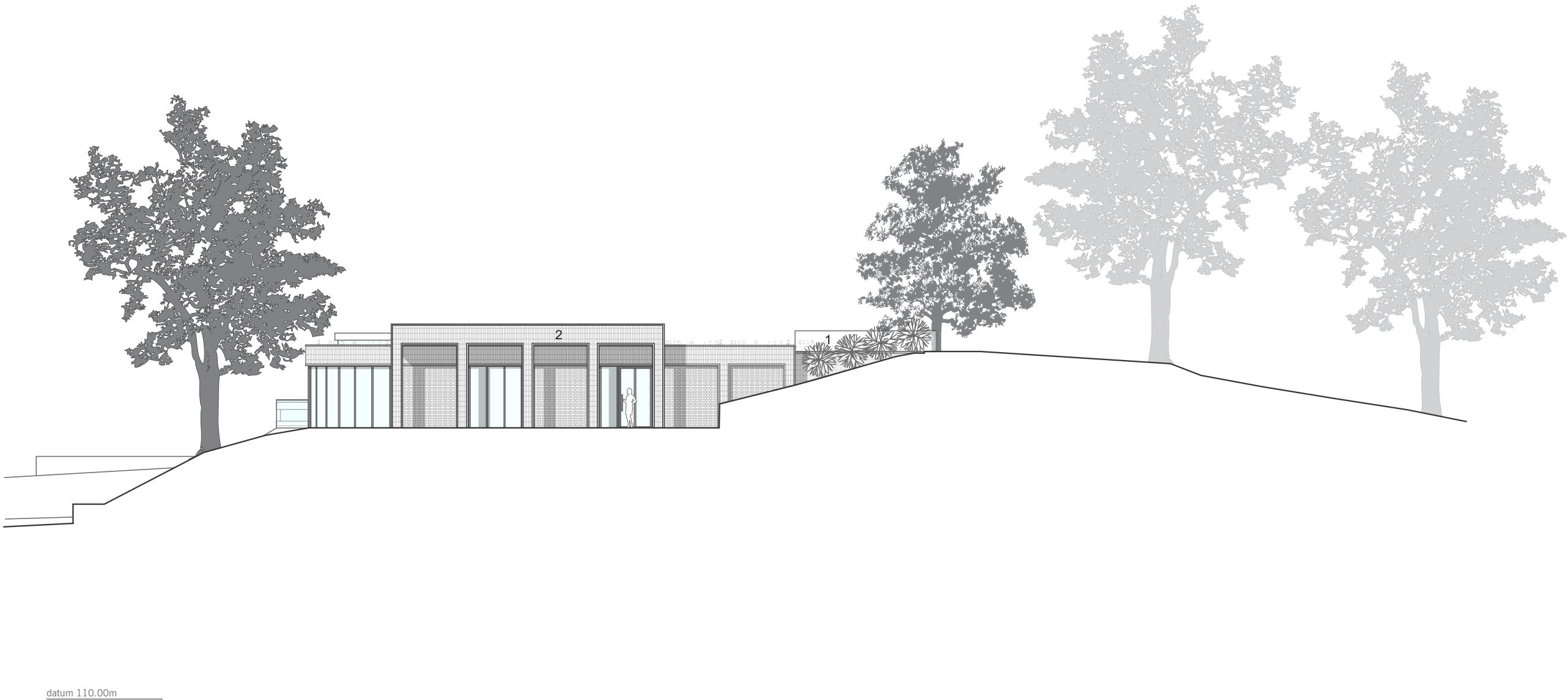
1.2m glazed screens added to prevent access and overlooking.

1/3 of library window specified obscured glass and non-openable.

Planters and guarding added to roof of annex at rear.

MATERIALS LEGEND

- 1. 1.2M Etched glass screen
- 2. Vertical red bricks to match existing



Rev C - 081014

Outline of proposed extension revised.

Rev B - 091009

South extension cut back to protect root ball of oak T11.

Rev A

Planters and guarding added to roof of annex to make it non-accessible.