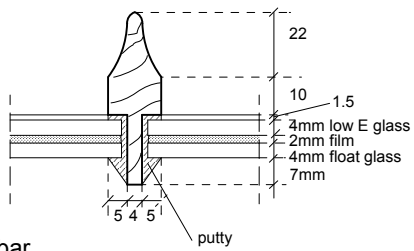


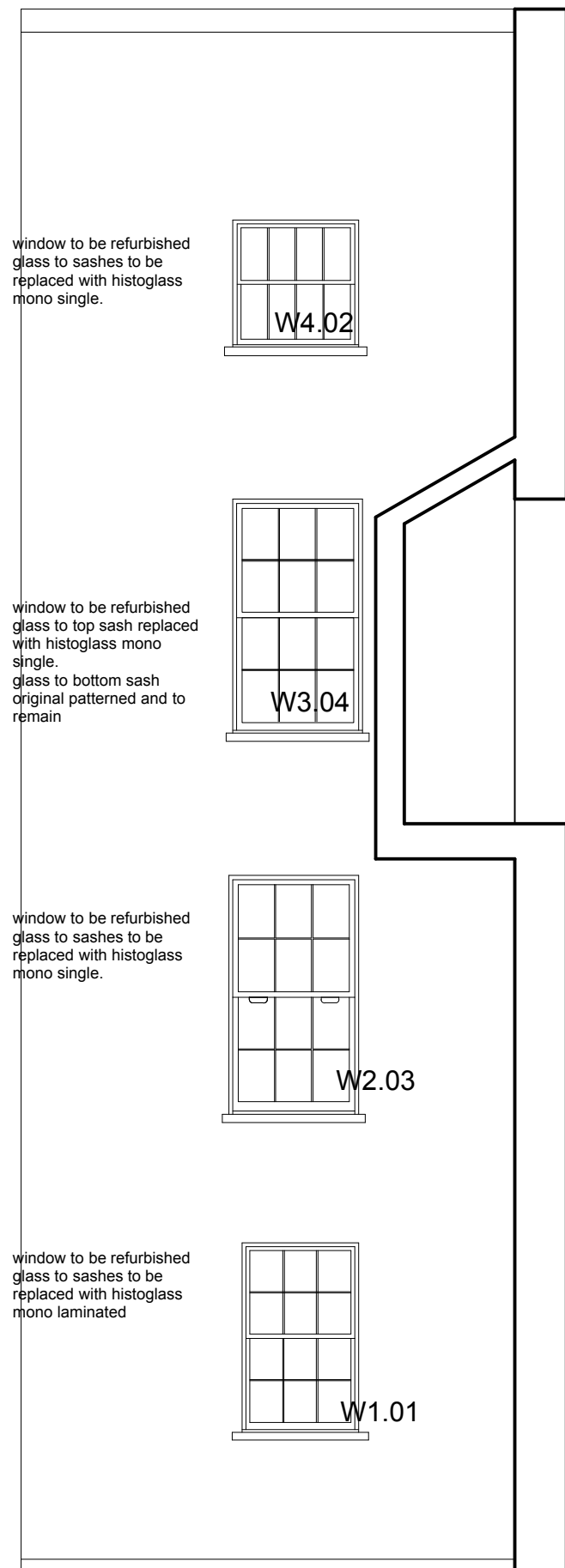
W4.05

Example elevation of new sashes using detailing and sizing of rails and stiles to match W4.05 third floor

INTERNAL ELEVATION OF WINDOW 1:20



Lambs tongue glazing bar using Histo Mono Laminate 1:2 detail
This detail to be applied to all new sashes and replicates the historic sashes



window to be refurbished glass to sashes to be replaced with histoglass mono single.

W4.02

window to be refurbished glass to top sash replaced with histoglass mono single. glass to bottom sash original patterned and to remain

W3.04

window to be refurbished glass to sashes to be replaced with histoglass mono single.

W2.03

window to be refurbished glass to sashes to be replaced with histoglass mono laminated

W1.01

FLANK WALL OF REAR OUTRIGGER

Rev A: Nov20 Drawings updated following site meeting with conservation officer

title: 50 Downshire Hill, London, NW3

FLANK WALL REAR AS PROPOSED

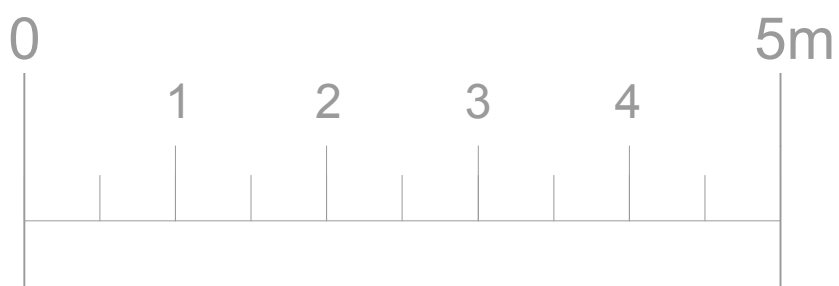
dwg no. 118/PA 02A scale: 1:50 & 1:20

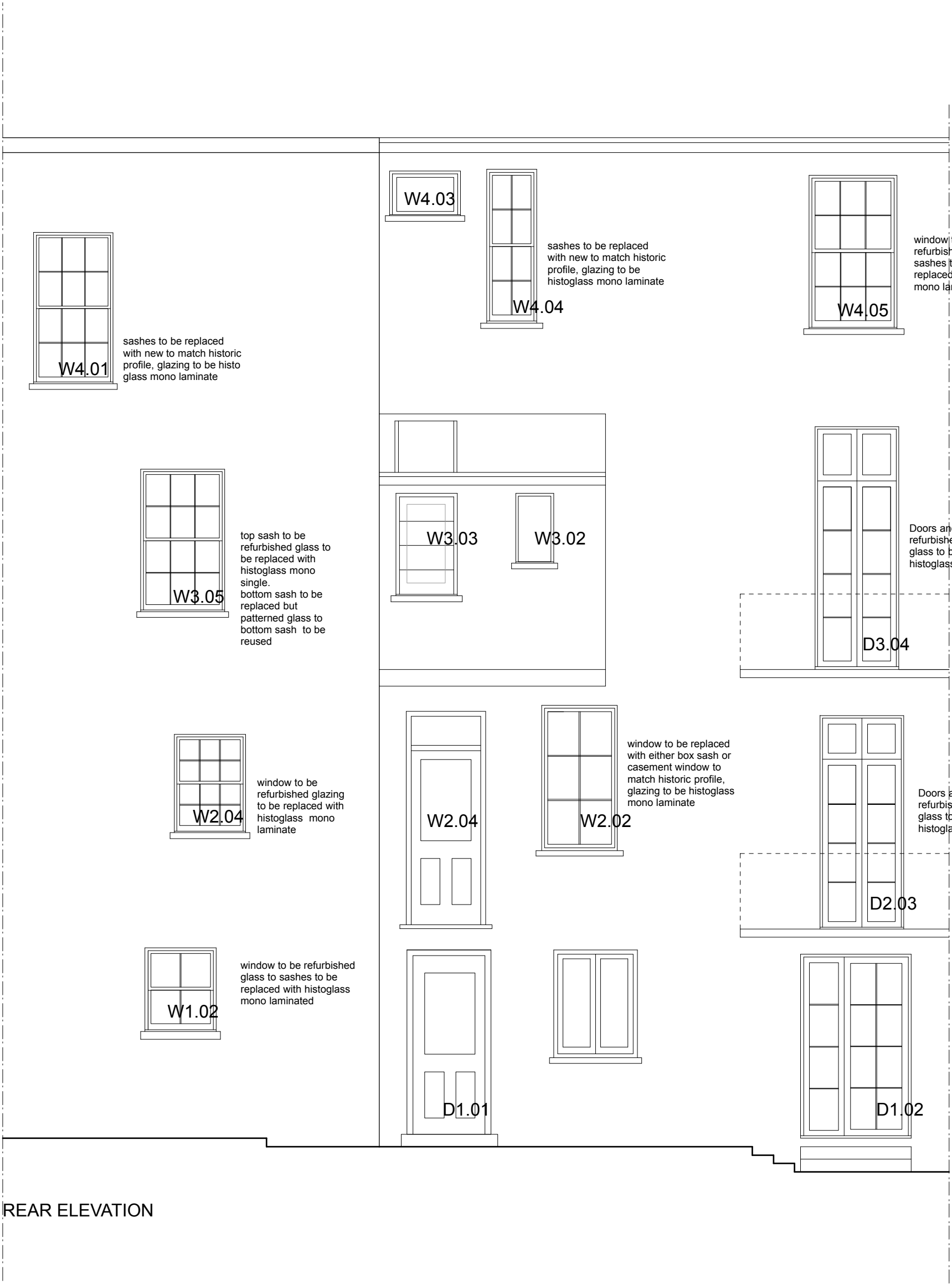
date: AUG 2020 @ A3

IMOGEN PLANNER ARCHITECTS LTD

THE STUDIO 6 KIVER ROAD LONDON N19 4PD

TEL: 020 7272 9944





REAR ELEVATION



Rev A: Nov20 Drawings updated following site meeting with conservation officer

title: 50 Downshire Hill, London, NW3	
REAR ELEVATION AS PROPOSED	
dwg no. 118/PA01A	scale: 1:50 @ A3
date: AUG 2020	
IMOGEN PLANNER ARCHITECTS LTD	
THE STUDIO 6 KIVER ROAD LONDON N19 4PD	
TEL: 020 7272 9944	