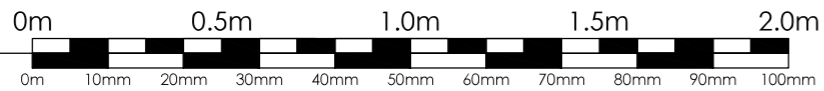
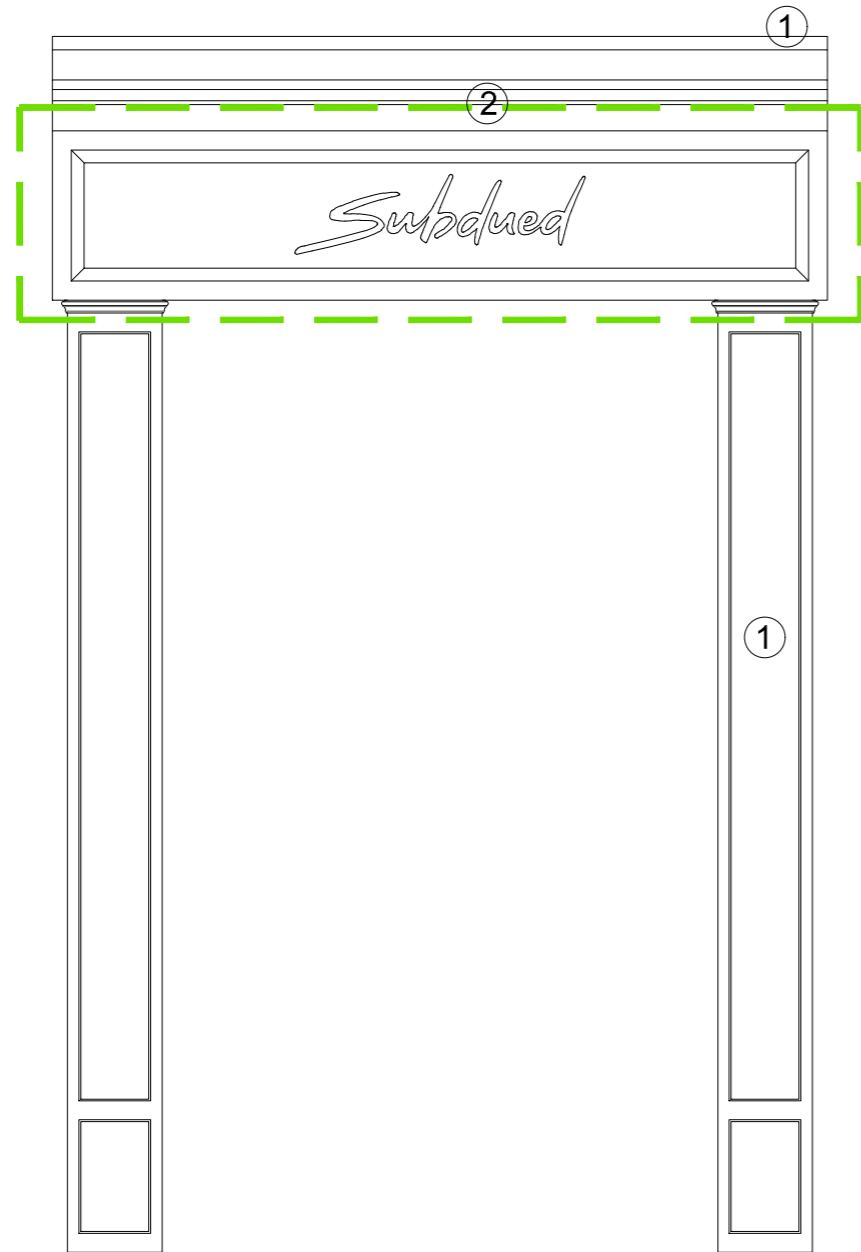


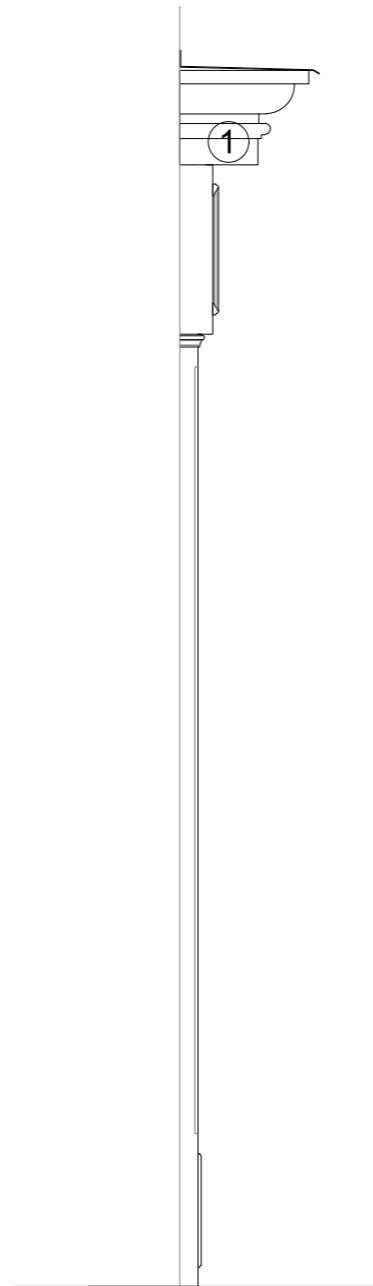
SCALE 1 : 20
SCALE 1 : 1



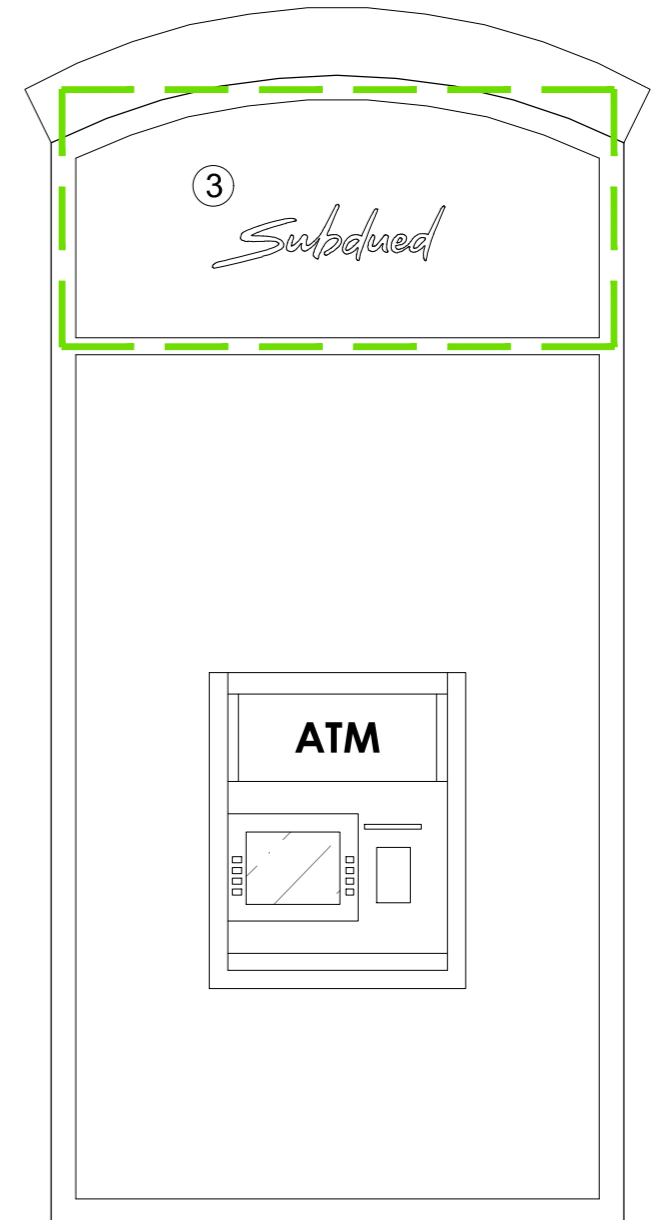
This drawing is copyright and may not be reproduced in whole or part without written authority. Bishop & Associates does not accept liability for any deviation to our drawings or specification. All measurement subject to full measured survey.



01 PROJECTING WINDOW CLADDING - 22 SHORT'S GARDENS
1:20



02 SIDE VIEW - WINDOW CLADDING
1:20



03 FRONT VIEW - VINYL SIGNAGE TO WINDOW
1:20

--- Signage Zone

Materials

- ① New overclad traditional style timber fascia. Finished in Matt Black with brand logo painted in contrasting White.
- ② Soft recessed downlight (x3) to underside of timber fascia.
- ③ White Vinyl Signage to shop window.

BISHOP & ASSOCIATES

Project: 37a Neal Street, West End, WC2H 9PR

TITLE DRAWING:
SHORT'S GARDENS SIGNAGE DETAILS: 1:20

| | | |
|---------------------|----------------------|---------------------------------|
| Scale: 1:20 @ A3 | Date: August 2020 | Drawing no.: 37aNS_DE01_rev0 |
|---------------------|----------------------|---------------------------------|