

Plan 1

Created on
2020-06-27

Total area 98.63 m ²	Floors 1	Rooms 2	Bathroom 0
---	--------------------	-------------------	----------------------

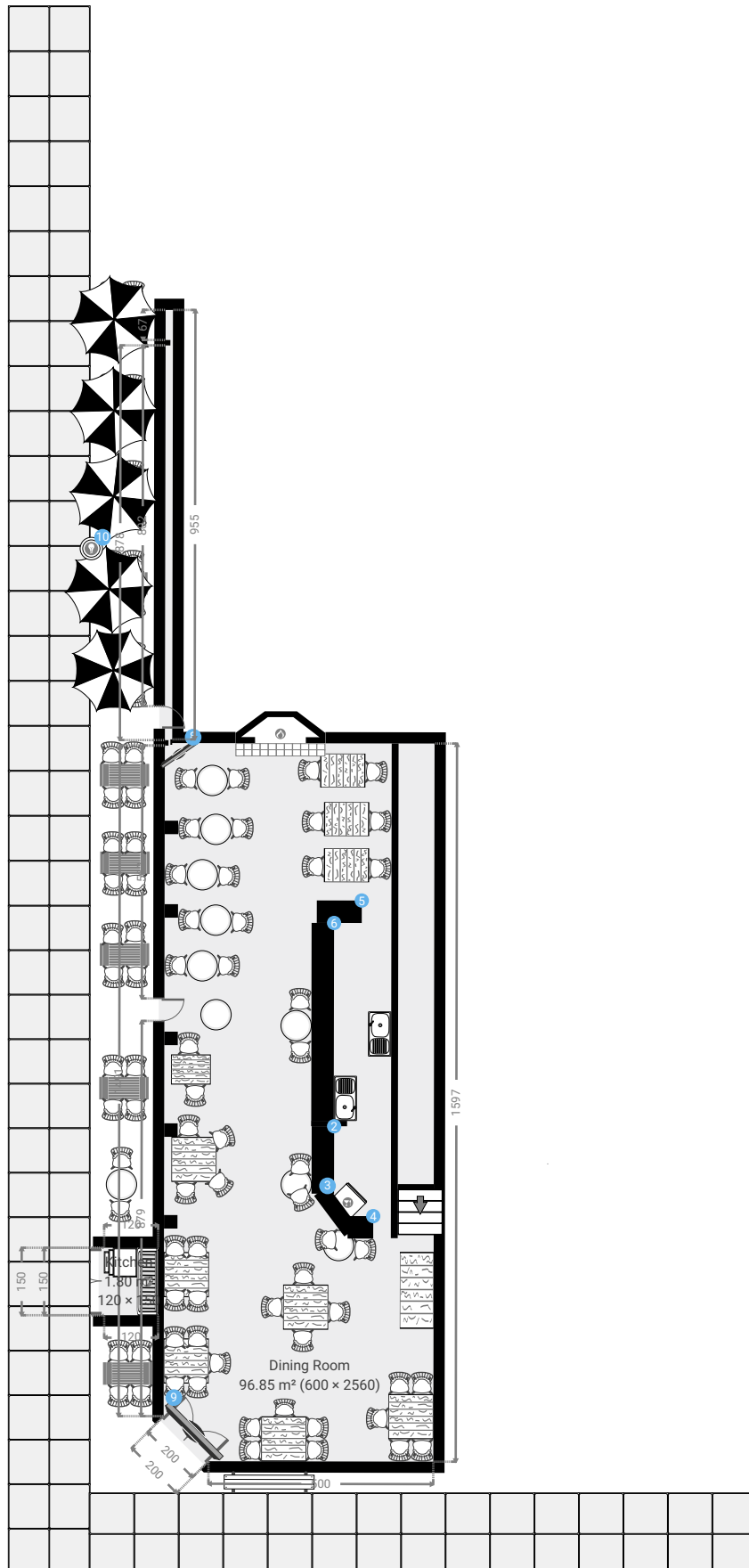


Plan 1

TOTAL AREA:98.63 m² • LIVING AREA:98.63 m² • FLOORS:1 • ROOMS:2

▼ Ground Floor

TOTAL AREA:98.63 m² • LIVING AREA:98.63 m² • ROOMS:2



Plan 1

TOTAL AREA:98.63 m² • LIVING AREA:98.63 m² • FLOORS:1 • ROOMS:2

▼ Ground Floor

10 LAMP

Height
500 cm

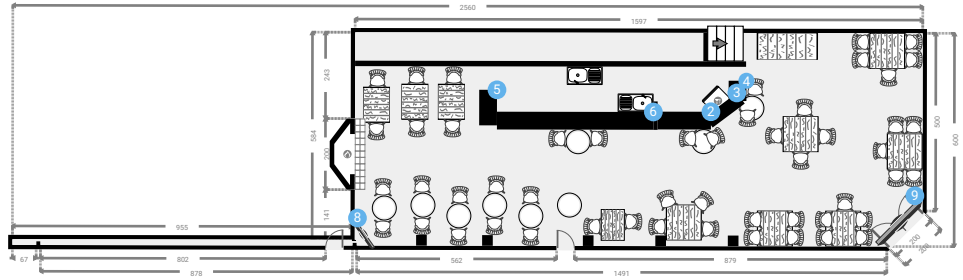
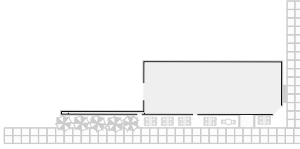


Plan 1

TOTAL AREA:98.63 m² • LIVING AREA:98.63 m² • FLOORS:1 • ROOMS:2

▼ Dining Room Ground Floor

WIDTH:2560 cm • LENGTH:600 cm
AREA:96.85 m² • PERIMETER:6315 cm



▼ Dining Room/Ground Floor

2 PARTITION WALL

Height
100 cm

3 PARTITION WALL

Height
100 cm

4 PARTITION WALL

Height
100 cm

5 PARTITION WALL

Height
100 cm

6 PARTITION WALL

Height
100 cm

Plan 1

TOTAL AREA:98.63 m² • LIVING AREA:98.63 m² • FLOORS:1 • ROOMS:2

▼ Dining Room/Ground Floor

8 TV 

Distance to Floor
160 cm

9 TV 

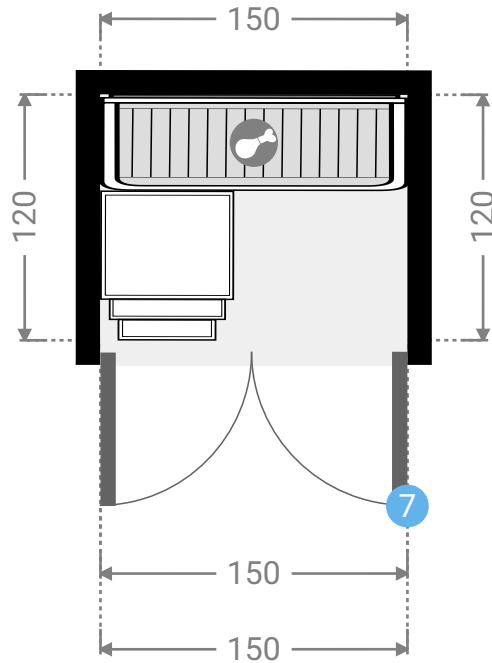
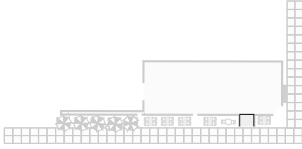
Distance to Floor
160 cm

Plan 1

TOTAL AREA:98.63 m² • LIVING AREA:98.63 m² • FLOORS:1 • ROOMS:2

▼ Kitchen Ground Floor

WIDTH:150 cm • LENGTH:120 cm • CEILING HEIGHT:150 cm
AREA:1.80 m² • PERIMETER:540 cm



▼ Kitchen/Ground Floor

7 DOUBLE HINGED DOOR

Height
100 cm

