

Methodology for installation of services within existing fabric – Chasing walls and cable tray installation	
Contract No:	156217
Contract Name:	Project Gamma
Method Statement Ref:	AC_C_MS007
Risk Assessment Cross Ref No:	T.B.C
State the activity that this MS covers:	Installation of all new services – throughout the building.
State location in the building where activity is taking place:	Throughout the entire building basement to level 4 - 20% of chasing is reusing existing, 20% is fishing cables through timber stud walls and 60% is new chasing. Please refer to Services drawings submitted at planning for locations of high level service runs, sockets, switches etc
Does the RA identify HS&E risks posed by this activity?	N/A as this is for methodology for approval by Local Planning Authority / Conservation Officer, LB Camden.
Reason For the works	Rationalise existing disordered and outdated service runs which have been installed overtime and replace with modern, more discrete systems to prolong the lifespan and ensure that the property is bought back into its primary function as a house suitable for modern living and use.
What access equipment is to be used to provide a safe working platform at the correct height?	Not Applicable
Identify other equipment/tools that are to be used:	Wall chaser with Vacuum, Hand tools
Identify what materials are to be used:	Heritage appropriate Lime plaster.
Name people responsible for compliance with this MS (incl employer if non-employees):	Kelvin Sandell – Overbury Senior Project manager
Are they trained to carry out the task and in the use the equipment, tools & materials?	Yes
<p><u>High Level Services route</u></p> <p>Please refer to electrical layout drawing '220039_E_2200 C' and Heating pipework layouts 'PDS NO. 14 planning set-2020 11 M 101 rev T1' previously submitted which indicate a high-level services route across the lower ground floor ceiling. All services on floors above run in the floor void and able to benefit for existing notches as outlined in previously submitted Methodology for risers.</p>	

Three singular Electrical service trays will be installed to contain all of the requirement for these services and will be fixed by means of a mechanical fixing IE 4.0 x 50 wood screws either through the tray directly to the underside of the existing joists, basement area only or by means of a small angle bracket to the side of the existing joist and runs parallel to these ceiling joists with minimal impact above ceiling level. This omits the need for a bulkhead and all services are concealed above the proposed new plasterboard ceiling.

Cables would then be fed from these trays out to the location of the sockets, wall lights or data points utilising the existing holes and notches within the joists from previous and original installations.

Chasing of walls

Chasing to the walls will be completed by means of using a wall chasing machine, we will set the correct depth and width on the wall chaser to ensure we remove minimal amounts of historic fabric, 95% of the chases are for electrical services to either a light fitting or a wall double socket outlet and to ensure we comply with the electrical regulations we have to ensure that all cables are protected with in a steel conduit, to be able to do this we need to create chases from face of plaster to a depth of 35mm allowing a 25mm conduit to be installed.

Chasing will be done so that historic fabric such as skirtings, picture rails or fibrous plaster are not disturbed or indeed damaged by stopping the chases short of these features and finishing the chase by hand around these items or drill the correct size hole up behind the historic feature.

Once all chases are completed and the relevant services installed through them, we will then back fill all chases with the relevant material to that part or section of the building, so where we have lime plaster we will use the historic lime plaster products that are available or where its been completed previous in a modern plaster finish we will complete in the same material.

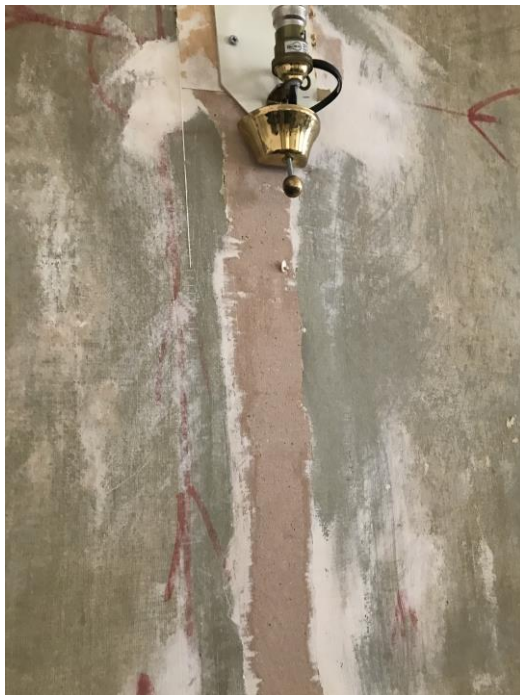



Fig 01. Example of existing chasing repaired with modern plaster. All additional new chases to be repaired in lime plaster.

Overbury Signature	
Overbury Name	Kelvin Sandell
Date:	12 th November 2020
UCL name	
Date	
UCL Signature	
Local Planning Authority / Conservation Officer, LB Camden. Name	
Date	
Local Planning Authority / Conservation Officer, LB Camden. Signature	