

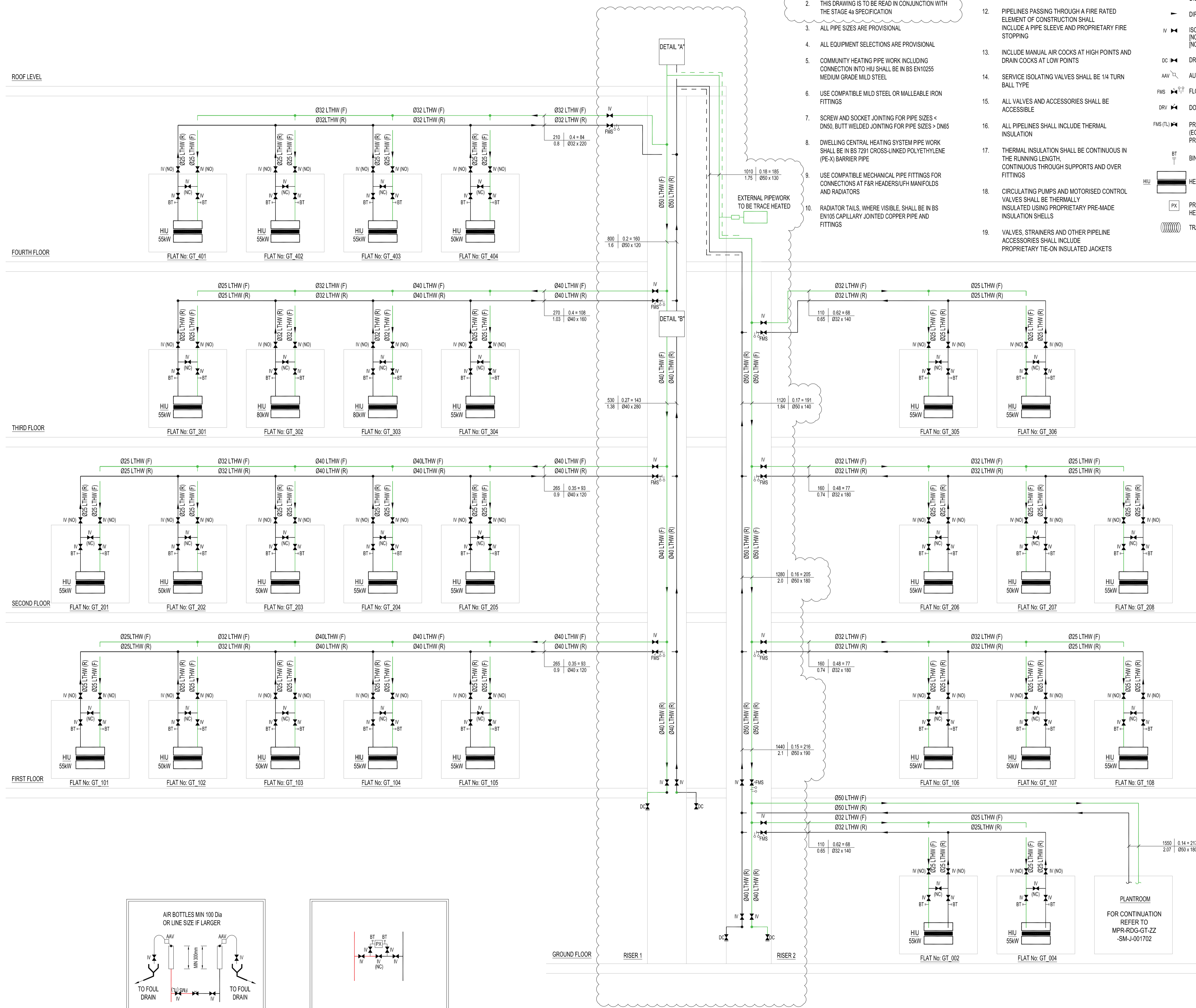
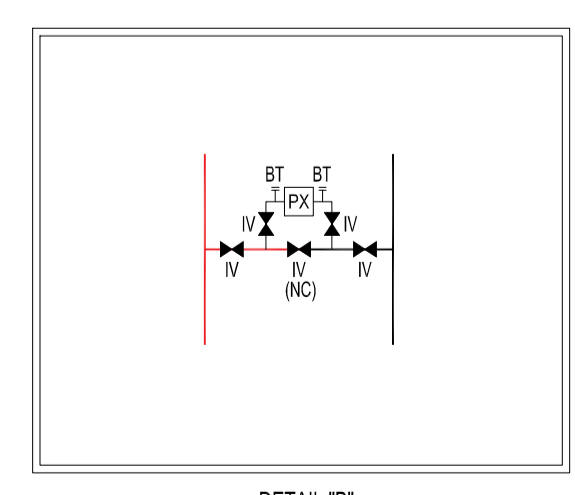
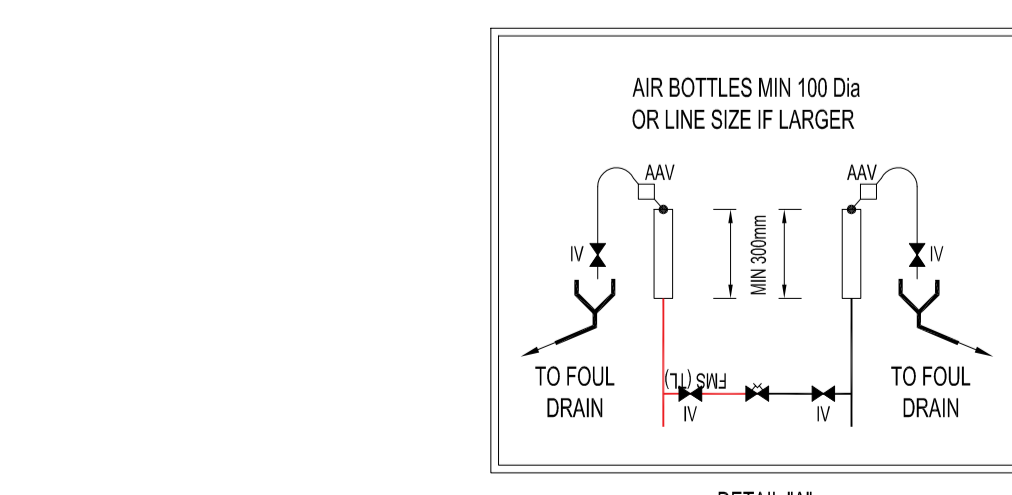
ROOF LEVEL

FOURTH FLOOR

THIRD FLOOR

SECOND FLOOR

FIRST FLOOR



NOTES

- ALL DIMENSIONS ARE IN MILLIMETERS UNLESS NOTATED OTHERWISE
- THIS DRAWING IS TO BE READ IN CONJUNCTION WITH THE STAGE 4a SPECIFICATION
- ALL PIPE SIZES ARE PROVISIONAL
- ALL EQUIPMENT SELECTIONS ARE PROVISIONAL
- COMMUNITY HEATING PIPE WORK INCLUDING CONNECTION INTO HIU SHALL BE IN BS EN10255 MEDIUM GRADE MILD STEEL
- USE COMPATIBLE MILD STEEL OR MALLEABLE IRON FITTINGS
- SCREW AND SOCKET JOINTING FOR PIPE SIZES < DN50, BUTT WELDED JOINTING FOR PIPE SIZES > DN50
- DWELLING CENTRAL HEATING SYSTEM PIPE WORK SHALL BE IN BS 7291 CROSS-LINKED POLYETHYLENE (PE-X) BARRIER PIPE
- USE COMPATIBLE MECHANICAL PIPE FITTINGS FOR CONNECTIONS AT F&R HEADERS/SUFH MANIFOLDS AND RADIATORS
- RADIATOR TAILS, WHERE VISIBLE, SHALL BE IN BS EN105 CAPILLARY JOINTED COPPER PIPE AND FITTINGS

LEGEND:

- PIPE WORK SHALL BE ADEQUATELY SUPPORTED IN THE RUNNING LENGTH USING PROPRIETARY CLIPS AND BRACKETS
 - PIPELINES PASSING THROUGH A FIRE RATED ELEMENT OF CONSTRUCTION SHALL INCLUDE A PIPE SLEEVE AND PROPRIETARY FIRE STOPPING
 - INCLUDE MANUAL AIR COCKS AT HIGH POINTS AND DRAIN COCKS AT LOW POINTS
 - SERVICE ISOLATING VALVES SHALL BE 1/4 TURN BALL TYPE
 - ALL VALVES AND ACCESSORIES SHALL BE ACCESSIBLE
 - ALL PIPELINES SHALL INCLUDE THERMAL INSULATION
 - THERMAL INSULATION SHALL BE CONTINUOUS IN THE RUNNING LENGTH, CONTINUOUS THROUGH SUPPORTS AND OVER FITTINGS
 - CIRCULATING PUMPS AND MOTORISED CONTROL VALVES SHALL BE THERMALLY INSULATED USING PROPRIETARY PRE-MADE INSULATION SHELLS
 - VALVES, STRAINERS AND OTHER PIPELINE ACCESSORIES SHALL INCLUDE PROPRIETARY TIE-ON INSULATED JACKETS
- DISTRICT HEATING FLOW
 - DISTRICT HEATING RETURN
 - DIRECTION OF FLOW
 - ISOLATING VALVE (NO) DENOTES NORMALLY OPEN (NC) DENOTES NORMALLY CLOSED
 - DRAIN COCK
 - AUTOMATIC AIR VALVE
 - FLOW MEASURING STATION
 - DOUBLE REGULATING VALVE
 - PRESETTABLE THERMOSTATIC VALVE (EG OVENTROP 'AQUASTORM T-PLUS') PRESSURE COMPENSATED
 - BINDER TEST POINT
 - HEAT INTERFACE UNIT
 - PRESSURE TRANSDUCER (LINKED TO DISTRICT HEATING PUMPS)
 - TRACE HEATING TO EXTERNAL PIPEWORK

LINKED MODEL SCHEDULE

WIP	ISO	INITIAL STATUS OR WORK IN PROGRESS
SHARED	S1	ISSUED FOR CO-ORDINATION
	S2	ISSUED FOR INFORMATION
	S3	ISSUED FOR INTERNAL REVIEW AND COMMENT
	S4	ISSUED FOR STAGE APPROVAL
	S5	N/A
	S6	ISSUED FOR PIM AUTHORISATION
	S7	ISSUED FOR AIM AUTHORISATION
	D1	ISSUED FOR COSTING
	D2	ISSUED FOR TENDER
	D3	ISSUED FOR CONTRACTOR DESIGN
	D4	ISSUED FOR MANUFACTURE/PROCUREMENT
PUBLISHED	A1, A2, etc	ACCEPTED AS STAGE COMPLETE
	B1, B2, etc	PARTIALLY SIGNED OFF
	CR	AS CONSTRUCTION RECORD

* INTEGER INDICATES RIBA STAGE COMPLETION

DRAWING STAGE DEFINITIONS (BSRIA BG6/2014)

STAGE	DESCRIPTION
STAGE 2	CONCEPT DRAWING
STAGE 3	DEVELOPED DESIGN DRAWING
STAGE 4A	TECHNICAL DESIGN DRAWING
STAGE 4B	COORDINATED WORKING DRAWING
STAGE 4C	COORDINATED WORKING DRAWING (SPECIALIST INPUT)
STAGE 5	INSTALLATION DRAWING/RECORD DRAWING

NO	DATE	DESCRIPTION	BY	CHK	APP		
S3	PROJ	22/05/2020	Stage 4a Issue	CR	LIB	RJ	CR
S3	PROJ	01/04/2020	Issued for Review & Comment	CR	LIB	RJ	CR

STATUS: REV | DATE | DESCRIPTION | DSG | DRW | CHK | APP

ALL REVISIONS

MAIN CONTRACTOR

BOUYGUES UK
 Bouygues UK
 Becket House
 1 Lambeth Palace Rd
 Lambeth, London SE1 7EU
 Tel: 020 7401 0020

Camden

RIDGE
 PROPERTY & CONSTRUCTION CONSULTANTS
 3 VALENTINE PLACE LONDON, SE1 8QH TEL: 020 7593 3400 WWW.RIDGE.CO.UK

PROJECT NAME: **Maitland Park Redevelopment**

DRAWING TITLE: **GRAFTON TERRACE HEATING SCHEMATIC SHEET 2 OF 2**

PROJECT	ORIGINATOR	VOLUME	LEVEL	TYPE	ROLE	NUMBER	REV
MPR	RDG	GT	ZZ	SM	J	001703	P02