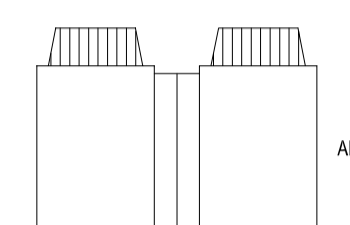


- LEGEND**
- IV ISOLATING VALVE
  - NRV NON RETURN VALVE
  - FC FLEXIBLE CONNECTION
  - PUMP
  - STRAINER
  - DC DRAIN OFF COCK
  - DRV DOUBLE REGULATING VALVE
  - PCV PRESSURE INDEPENDENT CONTROL VALVE
  - AAV AUTOMATIC AIR VENT
  - LSV LOCK SHIELD VALVE
  - OP ORIFICE PLATE
  - FMS FLOW MEASURING STATION
  - DPS DIFFERENTIAL PRESSURE SWITCH



MAX. INST. LOAD (kW)	DS 439	DIVERSE
FLOW RATE (kg/s)	Ø	x Pa / m

- NOTES**
- ALL DIMENSIONS ARE IN MILLIMETERS UNLESS NOTATED OTHERWISE
  - THIS DRAWING IS TO BE READ IN CONJUNCTION WITH THE TECHNICAL SPECIFICATION REF MP-TGA-XX-XX-M-59-0001
  - ALL PIPE SIZES ARE PROVISIONAL
  - ALL EQUIPMENT SELECTIONS ARE PROVISIONAL
  - COMMUNITY HEATING PIPE WORK INCLUDING CONNECTION INTO HIU SHALL BE IN BS EN10255 MEDIUM GRADE MILD STEEL
  - USE COMPATIBLE MILD STEEL OR MALLEABLE IRON FITTINGS
  - SCREW AND SOCKET JOINTING FOR PIPE SIZES < DN50, BUTT WELDED JOINTING FOR PIPE SIZES > DN65
  - DWELLING CENTRAL HEATING SYSTEM PIPE WORK SHALL BE IN BS 7291 CROSS-LINKED POLYETHYLENE (PE-X) BARRIER PIPE
  - USE COMPATIBLE MECHANICAL PIPE FITTINGS FOR CONNECTIONS AT F&R HEADERS/UHF MANIFOLDS AND RADIATORS
  - RADIATOR TAILS, WHERE VISIBLE, SHALL BE IN BS EN105 CAPILLARY JOINTED COPPER PIPE AND FITTINGS
  - PIPE WORK SHALL BE ADEQUATELY SUPPORTED IN THE RUNNING LENGTH USING PROPRIETARY CLIPS AND BRACKETS
  - PIPELINES PASSING THROUGH A FIRE RATED ELEMENT OF CONSTRUCTION SHALL INCLUDE A PIPE SLEEVE AND PROPRIETARY FIRE STOPPING
  - INCLUDE MANUAL AIR COCKS AT HIGH POINTS AND DRAIN COCKS AT LOW POINTS
  - SERVICE ISOLATING VALVES SHALL BE 1/4 TURN BALL TYPE
  - ALL VALVES AND ACCESSORIES SHALL BE ACCESSIBLE
  - ALL PIPELINES SHALL INCLUDE THERMAL INSULATION
  - THERMAL INSULATION SHALL BE CONTINUOUS IN THE RUNNING LENGTH, CONTINUOUS THROUGH SUPPORTS AND OVER FITTINGS
  - CIRCULATING PUMPS AND MOTORISED CONTROL VALVES SHALL BE THERMALLY INSULATED USING PROPRIETARY PRE-MADE INSULATION SHELLS
  - VALVES, STRAINERS AND OTHER PIPELINE ACCESSORIES SHALL INCLUDE PROPRIETARY TIE-ON INSULATED JACKETS

**MAXIMUM INSTANTANEOUS LOAD**

1 BED - 44kW DHWS + 2.3kW HTG - 46.3kW (50kW UNITS) 250 320 Pa/m
2 BED - 50kW DHWS + 3.4kW HTG - 53.4kW (55kW UNITS) 250 400 Pa/m
3 BED - 75kW DHWS + 4.9kW HTG - 80.0kW (80kW UNITS) 320 200 Pa/m

Δt @ 25°C

- REFERENCE DOCUMENTS**
- TGA SPEC-MP-TGA-XX-XX-SP-A-59-0001 DATED 14.01.20 THIS DOCUMENT INCLUDES APPENDIX A - CAMDEN HEAT NETWORK DESIGN SUPPLEMENT J1.3 DATED NOV 2016.
  - TGA DISTRICT HEATING SCHEMATIC DATED 18.12.19
  - TGA ENERGY STRATEGY FINAL ISSUE DATED 21.02.20
  - RIDGE SIZING DIVERSITY BASED ON DANISH STANDARD DS439

WIP	SO	INITIAL STATUS OR WORK IN PROGRESS
SHARED	S1	ISSUED FOR CO-ORDINATION
	S2	ISSUED FOR INFORMATION
	S3	ISSUED FOR INTERNAL REVIEW AND COMMENT
	S4	ISSUED FOR STAGE APPROVAL
	S5	N/A
PUBLISHED	S6	ISSUED FOR PIM AUTHORIZATION
	S7	ISSUED FOR AIM AUTHORIZATION
	D1	ISSUED FOR COSTING
	D2	ISSUED FOR TENDER
PUBLISHED	D3	ISSUED FOR CONTRACTOR DESIGN
	D4	ISSUED FOR MANUFACTURE/PROCUREMENT
	CR	ACCEPTED AS STAGE COMPLETE

INTEGER INDICATES RIBA STAGE COMPLETION

**DRAWING STAGE DEFINITIONS (BSRIA BG6/2014)**

STAGE 2 CONCEPT DRAWING  
 STAGE 3 DEVELOPED DESIGN DRAWING  
 STAGE 4A TECHNICAL DESIGN DRAWING  
 STAGE 4B COORDINATED WORKING DRAWING  
 STAGE 4C COORDINATED WORKING DRAWING (SPECIALIST INPUT)  
 STAGE 5 INSTALLATION DRAWING/RECORD DRAWING

S3	PROJ	26/05/2020	Stage 4a Issue	CR	LIB	RJ	CR
S3	PROJ	01/04/2020	Issued for Review & Comment	CR	LIB	RJ	CR

ALL REVISIONS: STATUS, REV, DATE, DESCRIPTION, DSG | DRW | CHK | APP

**MAIN CONTRACTOR**

Bouygues UK  
Becket House  
1 Lambeth Palace Rd  
Lambeth, London SE1 7EU  
Tel: 020 7401 0020

**CLIENT LOGO**

**KEY PLAN**

**ORIGINATOR**

PROPERTY & CONSTRUCTION CONSULTANTS  
 3 VALENTINE PLACE LONDON, SE1 8QH TEL: 020 7583 3400 WWW.RIDGE.CO.UK

**PROJECT NAME**  
Maitland Park Redevelopment

**DRAWING TITLE**  
GRAFTON TERRACE HEATING SCHEMATIC SHEET 1 OF 2

SCALE @ A1	MODEL FILE NAME - REVISION						
N.T.S.							
FIRST ISSUE DATE	PROJECT STAGE	STATUS CODE					
01/04/2020	Stage 4a	S3 - Issued for Review & Comment					

PROJECT	ORIGINATOR	VOLUME	LEVEL	TYPE	ROLE	NUMBER	REV
MPR	RDG	GT	ZZ	SM	J	001702	P02