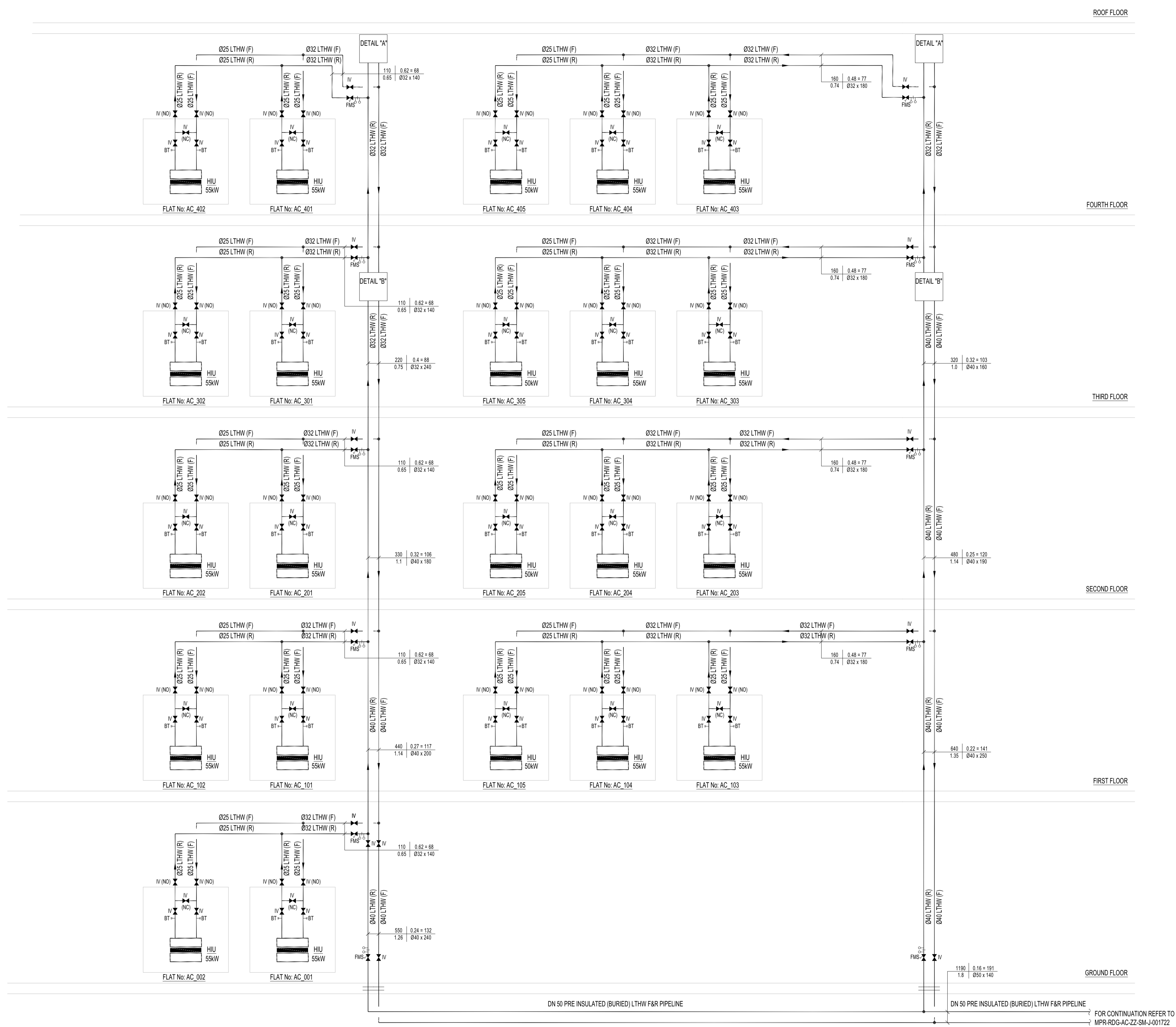
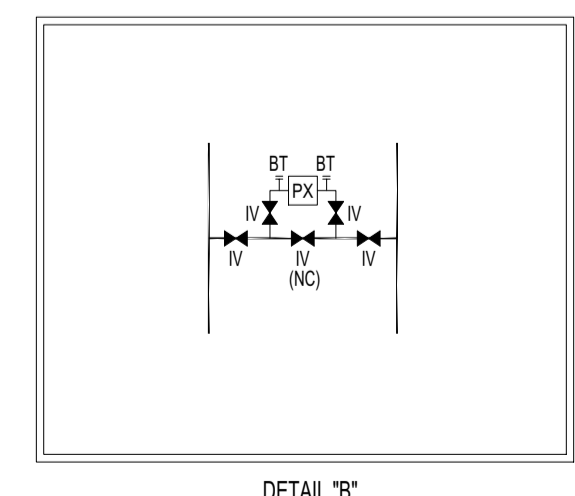
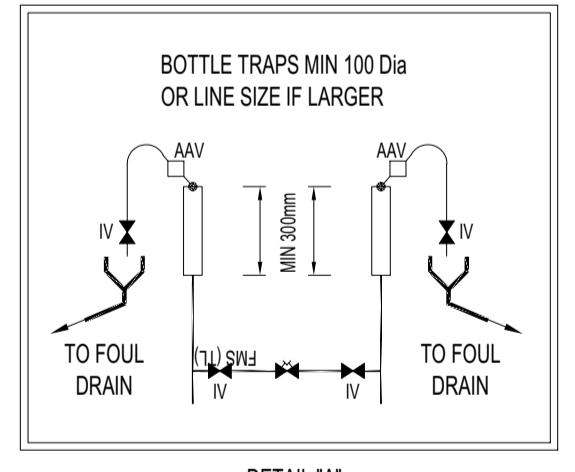
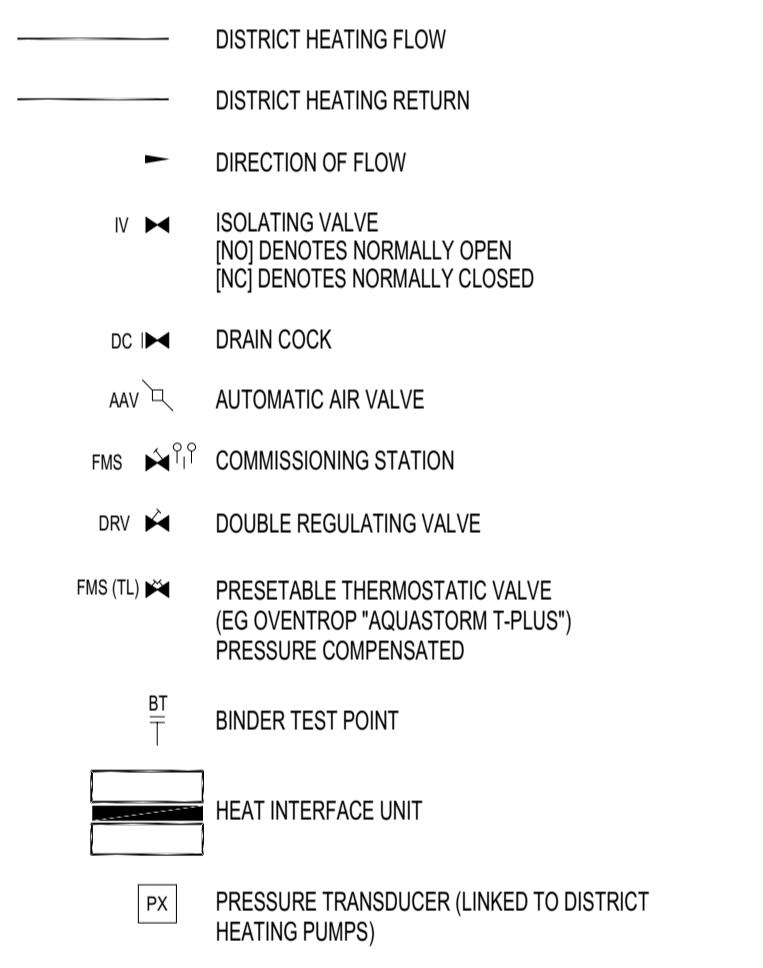


NOTES

- ALL DIMENSIONS ARE IN MILLIMETERS UNLESS NOTATED OTHERWISE
- THIS DRAWING IS TO BE READ IN CONJUNCTION WITH THE TECHNICAL SPECIFICATION REF MP-TGA-XX-XX-M-59-0001
- ALL PIPE SIZES ARE PROVISIONAL
- ALL EQUIPMENT SELECTIONS ARE PROVISIONAL
- COMMUNITY HEATING PIPE WORK INCLUDING CONNECTION INTO HIU SHALL BE IN BS EN10255 MEDIUM GRADE MILD STEEL
- USE COMPATIBLE MILD STEEL OR MALLEABLE IRON FITTINGS
- SCREW AND SOCKET JOINING FOR PIPE SIZES < DN50, BUTT WELDED JOINING FOR PIPE SIZES > DN65
- DWELLING CENTRAL HEATING SYSTEM PIPE WORK SHALL BE IN BS 7291 CROSS-LINKED POLYETHYLENE (PE-X) BARRIER PIPE
- USE COMPATIBLE MECHANICAL PIPE FITTINGS FOR CONNECTIONS AT F&R HEADERS/UPH MANIFOLDS AND RADIATORS
- RADIATOR TAILS, WHERE VISIBLE, SHALL BE IN BS EN105 CAPILLARY JOINTED COPPER PIPE AND FITTINGS
- PIPE WORK SHALL BE ADEQUATELY SUPPORTED IN THE RUNNING LENGTH USING PROPRIETARY CLIPS AND BRACKETS
- PIPELINES PASSING THROUGH A FIRE RATED ELEMENT OF CONSTRUCTION SHALL INCLUDE A PIPE SLEEVE AND PROPRIETARY FIRE STOPPING
- INCLUDE MANUAL AIR COCKS AT HIGH POINTS AND DRAIN COCKS AT LOW POINTS
- SERVICE ISOLATING VALVES SHALL BE 1/4 TURN BALL TYPE
- ALL VALVES AND ACCESSORIES SHALL BE ACCESSIBLE
- ALL PIPELINES SHALL INCLUDE THERMAL INSULATION
- THERMAL INSULATION SHALL BE CONTINUOUS IN THE RUNNING LENGTH, CONTINUOUS THROUGH SUPPORTS AND OVER FITTINGS
- CIRCULATING PUMPS AND MOTORISED CONTROL VALVES SHALL BE THERMALLY INSULATED USING PROPRIETARY PRE-MADE INSULATION SHELLS
- VALVES, STRAINERS AND OTHER PIPELINE ACCESSORIES SHALL INCLUDE PROPRIETARY TIE-ON INSULATED JACKETS

LEGEND:



LINKED MODEL SCHEDULE

MAXIMUM INSTANTANEOUS LOAD	
1 BED - 44kW DHWS + 2.3kW HTG - 46.5kW (50kW UNITS) 250 320 Palm	
2 BED - 50kW DHWS + 3.4kW HTG - 53.4kW (50kW UNITS) 250 400 Palm	
3 BED - 75kW DHWS + 4.9kW HTG - 80.0kW (80kW UNITS) 320 200 Palm	
Δt @ 25°C	
REFERENCE DOCUMENTS	
<ul style="list-style-type: none"> <li>TGA SPEC-MP-TGA-XX-XX-SP-AM-59-0001 DATED 14.01.20. THIS DOCUMENT INCLUDES APPENDIX A - CAMDEN HEAT NETWORK DESIGN SUPPLEMENT J1.3 DATED NOV 2016.</li> <li>TGA DISTRICT HEATING SCHEMATIC DATED 18.12.19.</li> <li>TGA ENERGY STRATEGY FINAL ISSUE DATED 21.02.20</li> <li>RIDGE SIZING DIVERSITY BASED ON DANISH STANDARD DS439</li> </ul>	
DRAWING STAGE DEFINITIONS (BSRIA BGG/2014)	
STAGE 2	CONCEPT DRAWING
STAGE 3	DEVELOPED DESIGN DRAWING
STAGE 4A	TECHNICAL DESIGN DRAWING
STAGE 4B	COORDINATED WORKING DRAWING
STAGE 4C	COORDINATED WORKING DRAWING (SPECIALIST INPUT)
STAGE 5	INSTALLATION DRAWING/RECORD DRAWING

WIP	ISO	INITIAL STATUS OR WORK IN PROGRESS
SHARED	S1	ISSUED FOR CO-ORDINATION
	S2	ISSUED FOR INFORMATION
	S3	ISSUED FOR INTERNAL REVIEW AND COMMENT
	S4	ISSUED FOR STAGE APPROVAL
	S5	N/A
	S6	ISSUED FOR PIM AUTHORISATION
	S7	ISSUED FOR AIM AUTHORISATION
	D1	ISSUED FOR COSTING
	D2	ISSUED FOR TENDER
	D3	ISSUED FOR CONTRACTOR DESIGN
	D4	ISSUED FOR MANUFACTURE/PROCUREMENT
PUBLISHED		
A1, A2, etc	etc	ACCEPTED AS STAGE COMPLETE
B1, B2, etc	etc	PARTIALLY SIGNED OFF
CR		AS CONSTRUCTION RECORD
* INTEGER INDICATES RIBA STAGE COMPLETION		

S3	P01	01/04/2020	Issued for Review & Comment	CR	LIB	RJ	CR
STATUS/REV	DATE	DESCRIPTION	DSG   DRW   CHK   APP				

MAN CONTRACTOR

Bouygues UK  
Becket House  
1 Lambeth Palace Rd  
Lambeth, London SE1 7EU  
Tel: 020 7401 0020

CLIENT LOGO

KEY PLAN

ORIGINATOR

PROPERTY & CONSTRUCTION CONSULTANTS  
3 VALENTINE PLACE LONDON, SE1 8QH TEL: 020 7583 3400 WWW.RIDGE.CO.UK

PROJECT NAME: **Maitland Park Redevelopment**

DRAWING TITLE: **ASPEN COURT HEATING SCHEMATIC SHEET 2 OF 2**

SCALE @ A1	MODEL FILE NAME - REVISION						
N.T.S.							
FIRST ISSUE DATE	PROJECT STAGE	STATUS CODE					
01/04/2020	Stage 4a	S3 - Issued for Review & Comment					
PROJECT	ORIGINATOR	VOLUME	LEVEL	TYPE	ROLE	NUMBER	REV
MPR	RDG	AC	ZZ	SM	J	001723	P01