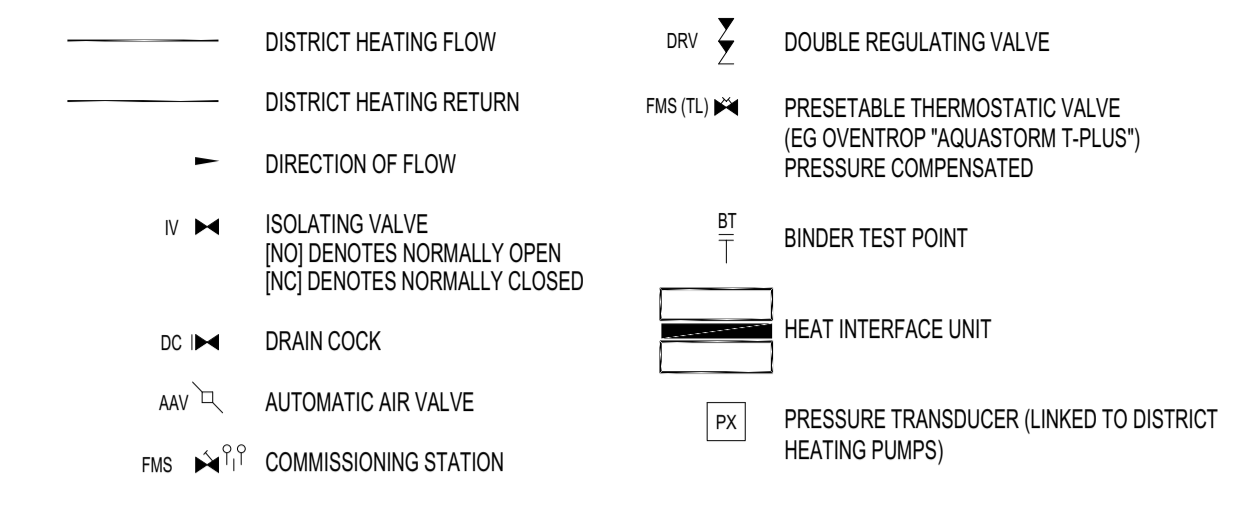


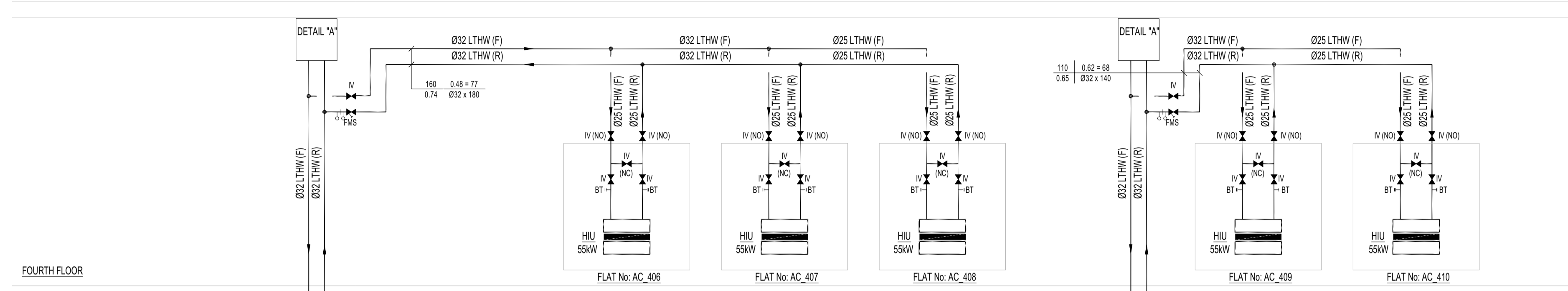
NOTES

- ALL DIMENSIONS ARE IN MILLIMETERS UNLESS NOTATED OTHERWISE
- THIS DRAWING IS TO BE READ IN CONJUNCTION WITH THE TECHNICAL SPECIFICATION REF MP-TGA-XX-XX-M-59-0001
- ALL PIPE SIZES ARE PROVISIONAL
- ALL EQUIPMENT SELECTIONS ARE PROVISIONAL
- COMMUNITY HEATING PIPE WORK INCLUDING CONNECTION INTO HIU SHALL BE IN BS EN10255 MEDIUM GRADE MILD STEEL
- USE COMPATIBLE MILD STEEL OR MALLEABLE IRON FITTINGS
- SCREW AND SOCKET JOINTING FOR PIPE SIZES < DN50, BUTT WELDED JOINTING FOR PIPE SIZES > DN65
- DWELLING CENTRAL HEATING SYSTEM PIPE WORK SHALL BE IN BS 7291 CROSS-LINKED POLYETHYLENE (PE-X) BARRIER PIPE
- USE COMPATIBLE MECHANICAL PIPE FITTINGS FOR CONNECTIONS AT F&R HEADERS/UFH MANIFOLDS AND RADIATORS
- RADIATOR TAILS, WHERE VISIBLE, SHALL BE IN BS EN105 CAPILLARY JOINTED COPPER PIPE AND FITTINGS
- PIPE WORK SHALL BE ADEQUATELY SUPPORTED IN THE RUNNING LENGTH USING PROPRIETARY CLIPS AND BRACKETS
- PIPELINES PASSING THROUGH A FIRE RATED ELEMENT OF CONSTRUCTION SHALL INCLUDE A PIPE SLEEVE AND PROPRIETARY FIRE STOPPING
- INCLUDE MANUAL AIR COCKS AT HIGH POINTS AND DRAIN COCKS AT LOW POINTS
- SERVICE ISOLATING VALVES SHALL BE 1/4 TURN BALL TYPE
- ALL VALVES AND ACCESSORIES SHALL BE ACCESSIBLE
- ALL PIPELINES SHALL INCLUDE THERMAL INSULATION
- THERMAL INSULATION SHALL BE CONTINUOUS IN THE RUNNING LENGTH, CONTINUOUS THROUGH SUPPORTS AND OVER FITTINGS
- CIRCULATING PUMPS AND MOTORISED CONTROL VALVES SHALL BE THERMALLY INSULATED USING PROPRIETARY PRE-MADE INSULATION SHELLS
- VALVES, STRAINERS AND OTHER PIPELINE ACCESSORIES SHALL INCLUDE PROPRIETARY TIE-ON INSULATED JACKETS

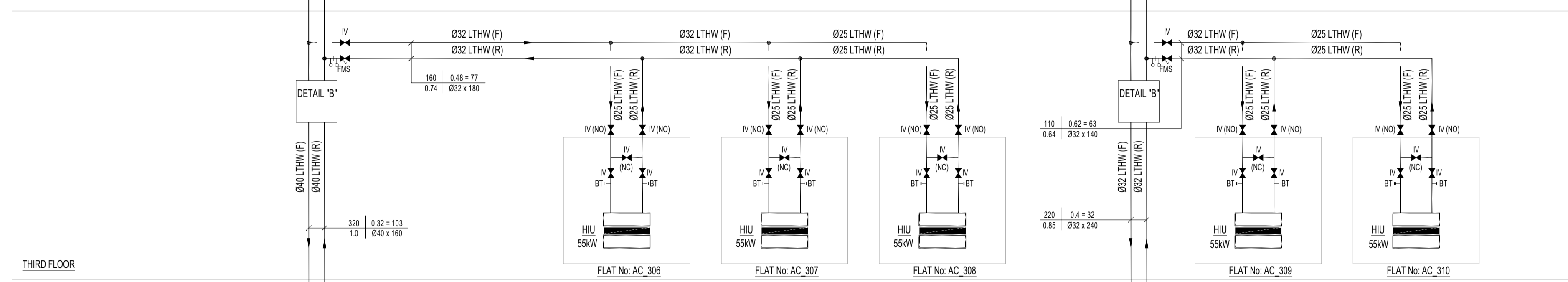
LEGEND:



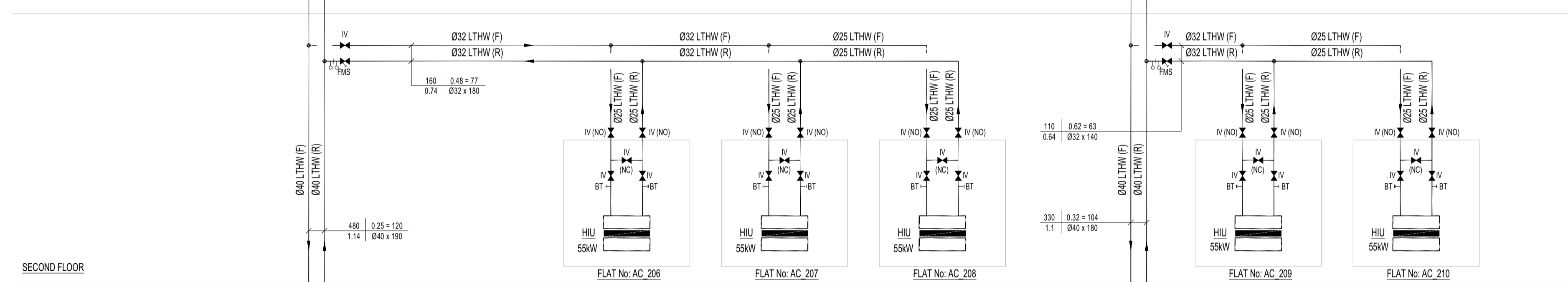
ROOF FLOOR



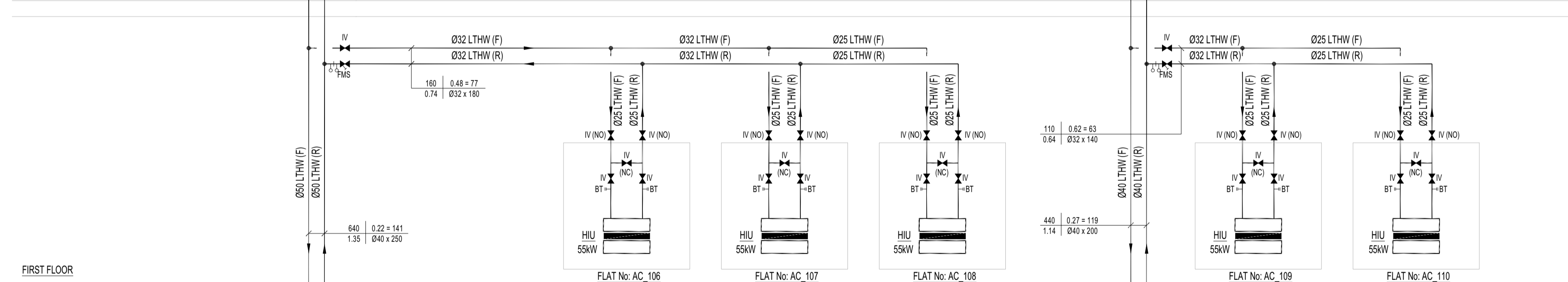
FOURTH FLOOR



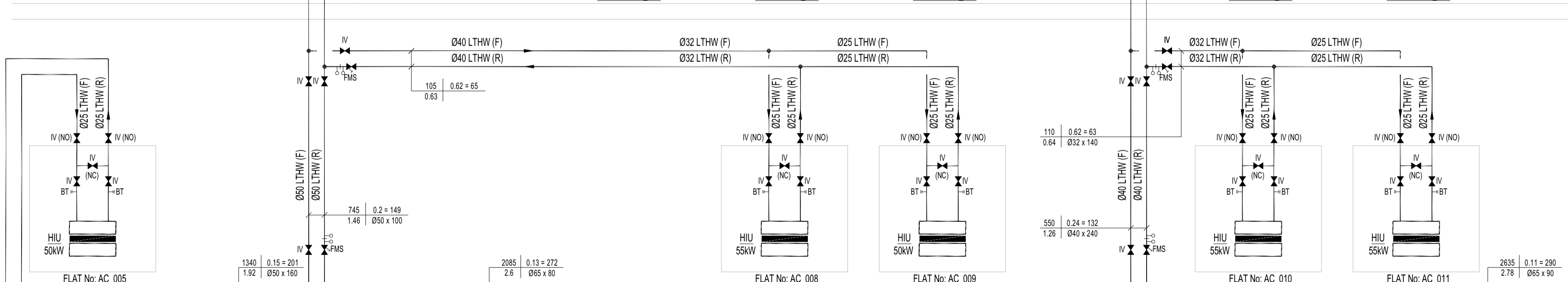
THIRD FLOOR



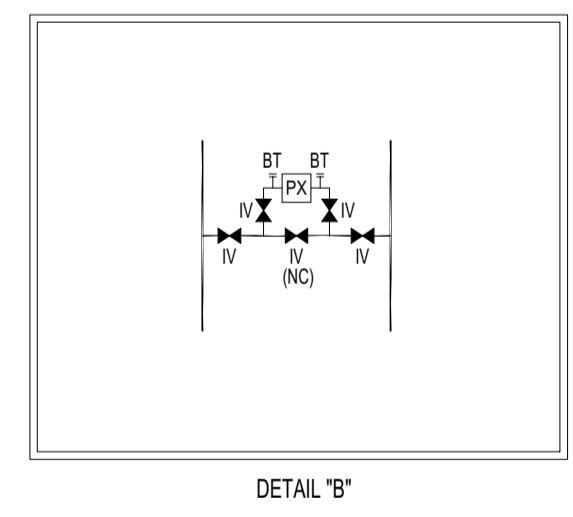
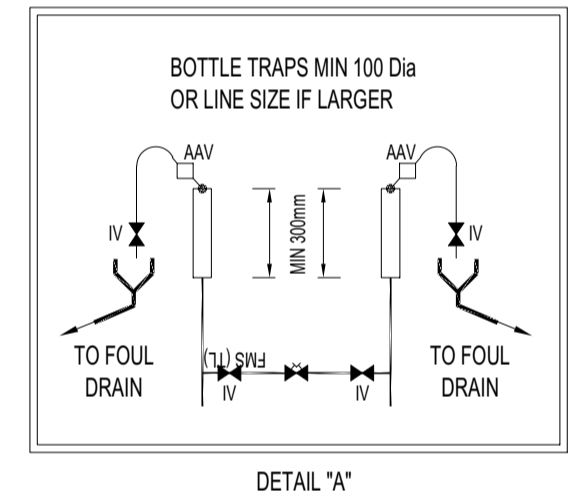
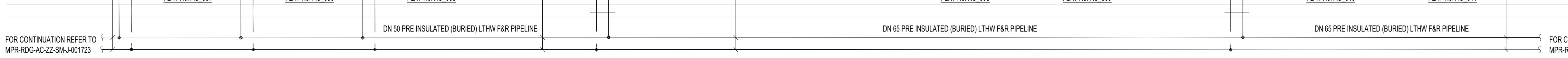
SECOND FLOOR



FIRST FLOOR



GROUND FLOOR



LINKED MODEL SCHEDULE

MAXIMUM INSTANTANEOUS LOAD	
1 BED - 44kW DHWS + 2.3kW HTG - 46.3kW (55kW UNITS) 250 320 Palm	
2 BED - 56kW DHWS + 3.4kW HTG - 53.4kW (55kW UNITS) 250 400 Palm	
3 BED - 75kW DHWS + 4.9kW HTG - 80.0kW (80kW UNITS) 320 400 Palm	
Δt @ 25°C	
REFERENCE DOCUMENTS	
<ul style="list-style-type: none"> TGA SPEC-MP-TGA-XX-XX-SP-M-59-0001 DATED 14.01.20. THIS DOCUMENT INCLUDES APPENDIX A - CAMDEN HEAT NETWORK DESIGN SUPPLEMENT J1.3 DATED NOV 2016. TGA DISTRICT HEATING SCHEMATIC DATED 18.12.19. TGA ENERGY STRATEGY FINAL ISSUE DATED 21.02.20 RIDGE SIZING DIVERSITY BASED ON DANISH STANDARD DS439 	
WIP	
S0	INITIAL STATUS OR WORK IN PROGRESS
SHARED	
S1	ISSUED FOR CO-ORDINATION
S2	ISSUED FOR INFORMATION
S3	ISSUED FOR INTERNAL REVIEW AND COMMENT
S4	ISSUED FOR STAGE APPROVAL
S5	N/A
S6	ISSUED FOR PIM AUTHORISATION
S7	ISSUED FOR AIM AUTHORISATION
D1	ISSUED FOR COSTING
D2	ISSUED FOR TENDER
D3	ISSUED FOR CONTRACTOR DESIGN
D4	ISSUED FOR MANUFACTURE/PROCUREMENT
PUBLISHED	
A1, A2, etc	ACCEPTED AS STAGE COMPLETE
B1, B2, etc	PARTIALLY SIGNED OFF
CR	AS CONSTRUCTION RECORD
* INTEGER INDICATES RIBA STAGE COMPLETION	
DRAWING STAGE DEFINITIONS (BSRIA BG6/2014)	
STAGE 2	CONCEPT DRAWING
STAGE 3	DEVELOPED DESIGN DRAWING
STAGE 4A	TECHNICAL DESIGN DRAWING
STAGE 4B	COORDINATED WORKING DRAWING
STAGE 4C	COORDINATED WORKING DRAWING (SPECIALIST INPUT)
STAGE 5	INSTALLATION DRAWING/RECORD DRAWING

S3	P01	01/04/2020	Issued for Review & Comment	CR	LIB	RJ	CR
STATUS/REV		DATE	DESCRIPTION	DSG DRW CHK APP			
ALL REVISIONS							
MAIN CONTRACTOR							
				Bouygues UK Becket House 1 Lambeth Palace Rd Lambeth, London SE1 7EU Tel: 020 7401 0020			
CLIENT LOGO							
KEY PLAN							

ORIGINATOR							
				RIDGE PROPERTY & CONSTRUCTION CONSULTANTS 3 VALENTINE PLACE LONDON, SE1 8QH TEL: 020 7583 3400 WWW.RIDGE.CO.UK			

PROJECT NAME							
Maitland Park Redevelopment							
DRAWING TITLE							
ASPEN COURT HEATING SCHEMATIC SHEET 1 OF 2							

SCALE @ A1		MODEL FILE NAME - REVISION					
N.T.S.							
FIRST ISSUE DATE		PROJECT STAGE		STATUS CODE			
01/04/2020		Stage 4a		S3 - Issued for Review & Comment			
PROJECT	ORIGINATOR	VOLUME	LEVEL	TYPE	ROLE	NUMBER	REV
MPR	RDG	AC	ZZ	SM	J	001722	P01

FOR CONTINUATION REFER TO MPR-RDG-AC-ZZ-SM-J-001723

FOR CONTINUATION REFER TO MPR-RDG-AV-ZZ-SM-J-001713