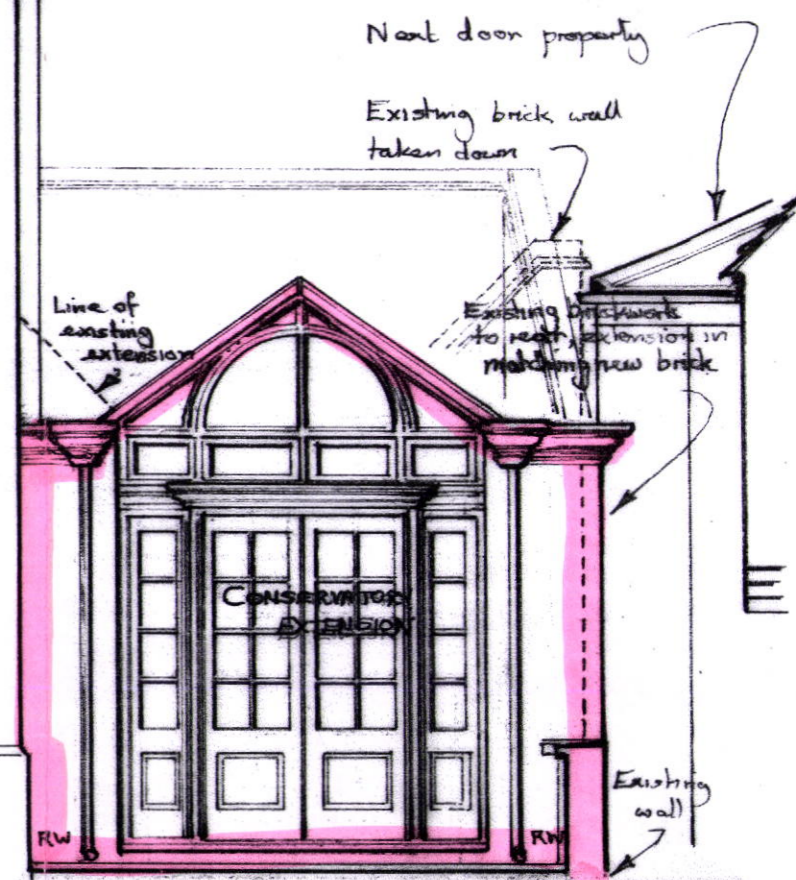




LONDON BOROUGH OF CAMDEN
TOWN AND COUNTRY PLANNING ACTS
02 JUL 2004
PLANS APPROVED
ON BEHALF OF THE COUNCIL

2004/0711/L
LONDON BOROUGH OF CAMDEN
TOWN AND COUNTRY PLANNING ACTS
02 JUL 2004
RECOMMENDATION AGREED
ON BEHALF OF THE COUNCIL

2004/0710/P



ATRIA ASSOCIATES
68 MANSFIELD ROAD LONDON NW3 2HU
TEL: 020 7267 9480 FAX: 020 7267 2361
14 Gainsborough Gdns, London NW3
Proposed Scheme: front elevation
Date: February 2004 Rev F Scale 1:50
Drawn HRL Jb/Dw No 2245/15