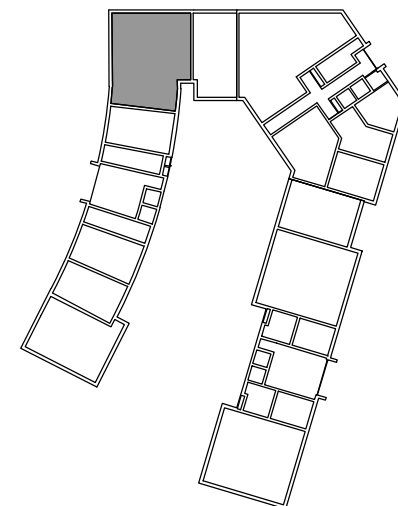


Plot Numbers:
C84

Key Plan
Unit locations denoted in grey



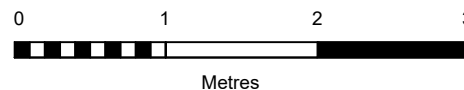
Key plan

Rev	Date	Drawn	Description
1	30.10.20	ALE	Initial Issue

Notes:
Do not scale from drawings unless by agreement with HTA. Use figured dimensions only. Check all dimensions on site prior to commencing the works. Drawing to be read in conjunction with other relevant consultant information.

Legend

This drawing is the copyright of HTA Design LLP and must not be copied or reproduced in part, or in whole, without the express permission of HTA Design LLP. Drawing to be read in conjunction with specification.



3 Bed/ 5 Person - Type RW
drawing title Unit Plan

CHA-HTA-A-0318
drawing number

*

Vistry Partnerships
Belmont Street Site, Camden
client / project

1:50
scale @ A3

GAL-CHA
project number

ALE
originated by

FOR PLANNING
status

HTA Design LLP
www.hta.co.uk
London | Edinburgh | Manchester | Bristol

