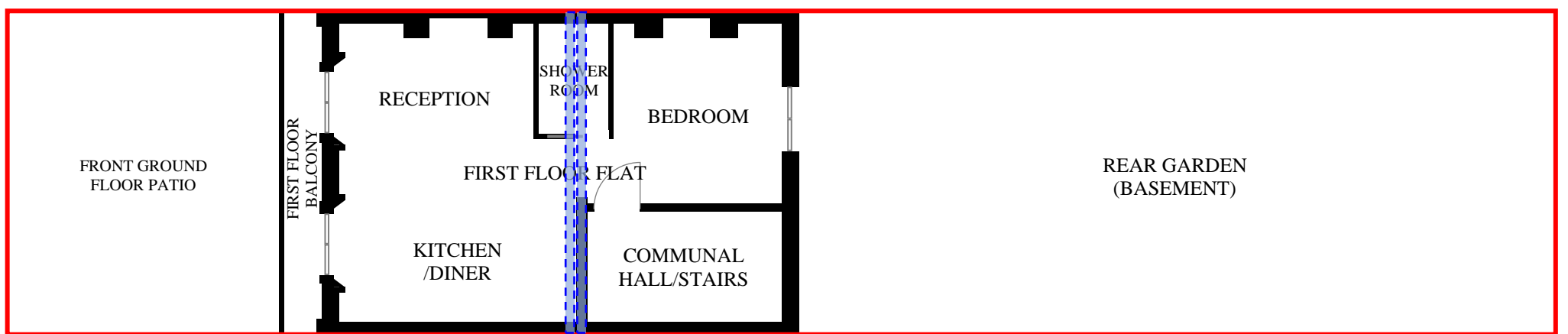


PRE-EXISTING INTERNAL LAYOUT

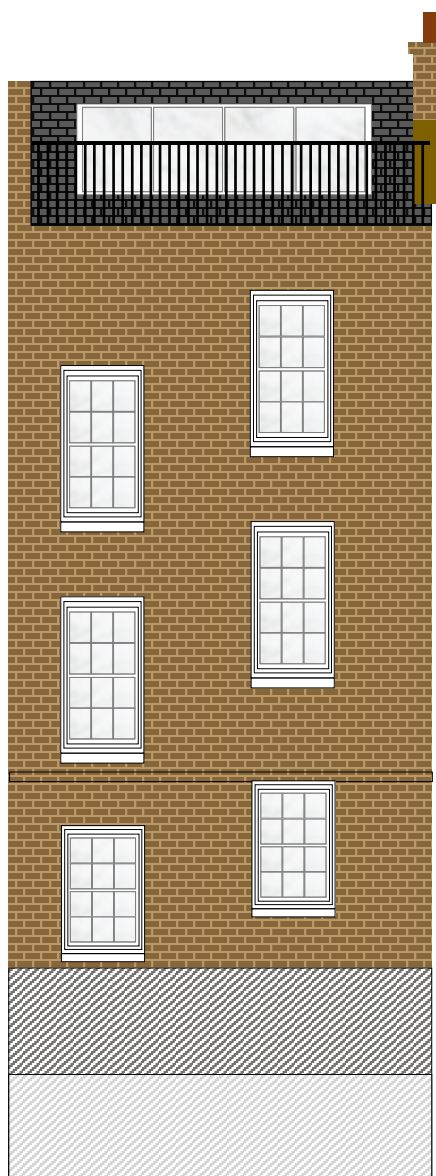


AS-BUILT INTERNAL LAYOUT

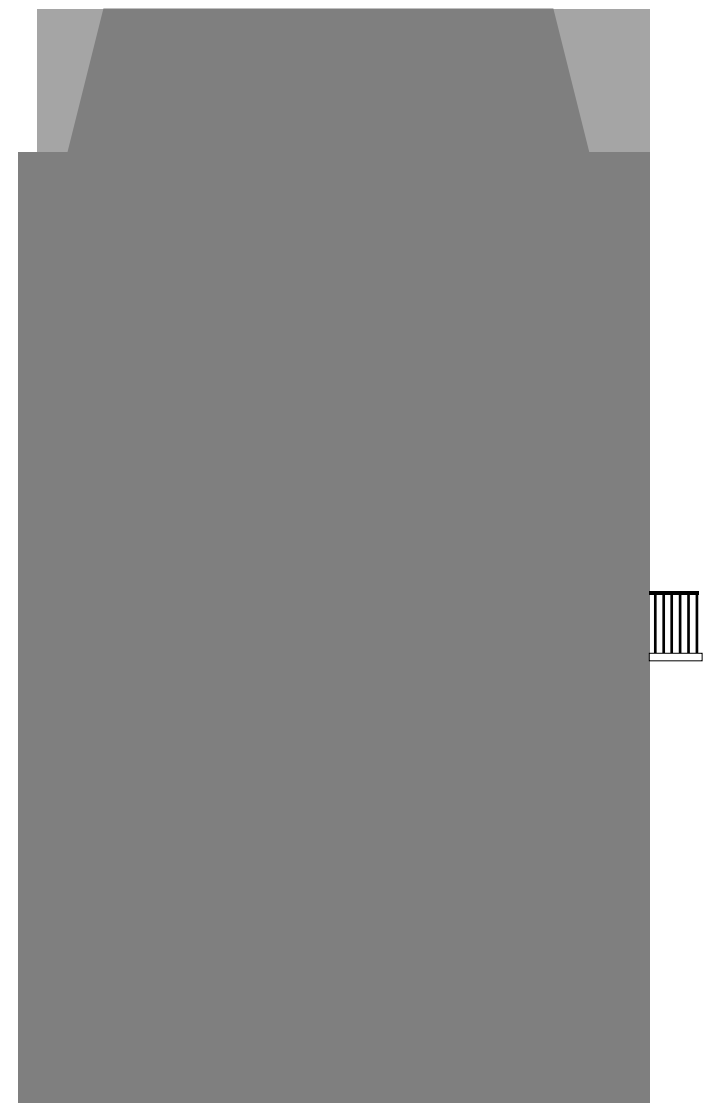
The only changes are the new full-span RSJs to carry the central supporting wall of the building. These were inserted on direction from Structural Engineers who noticed significant bending of the original timber beams that were not sufficiently strong to carry the load applied to them from above. This change was made on the basis of safety with no benefit to the flat owner and has prevented possible future structural damage or collapse.



FRONT ELEVATION
(UNCHANGED)



REAR ELEVATION
(UNCHANGED)



NORTH SIDE ELEVATION
(UNCHANGED)