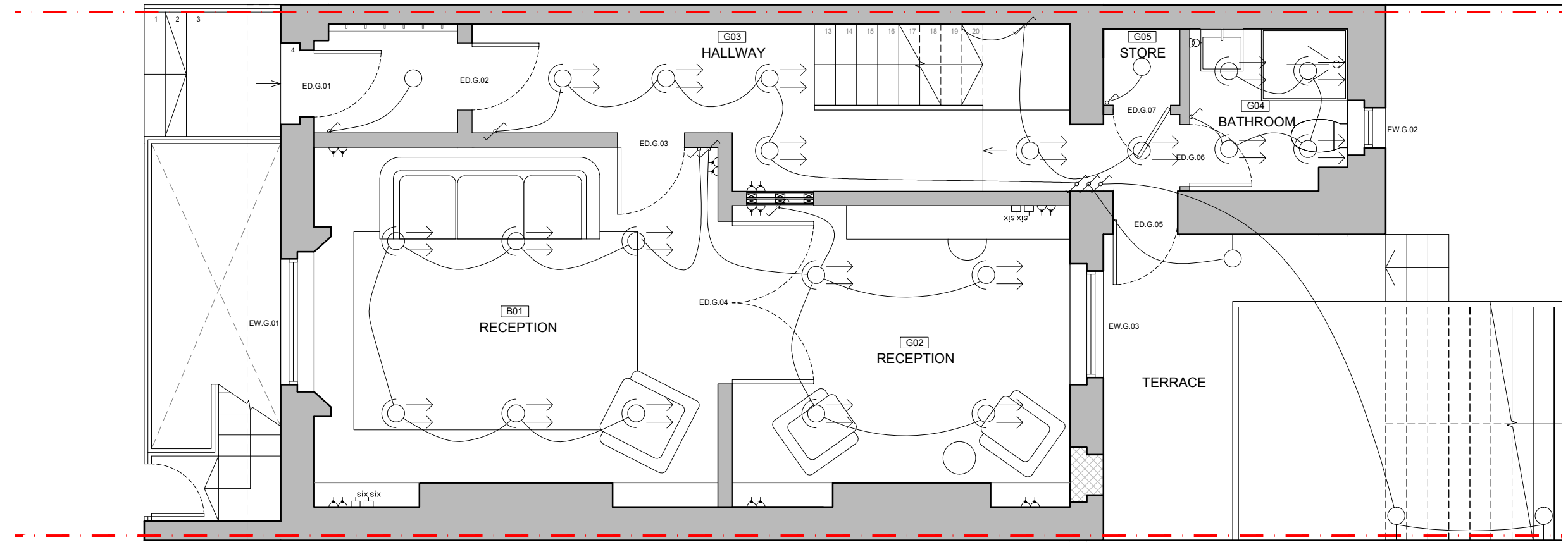


Rev.	Date	By	Check	Appr.	Description
-	22.10.20	JV	GS	GS	Retrospective Planning issue.
A	04.11.20	JV	GS	GS	Updated to client comments.

Key

△	single socket	↗	single switch
△△	double socket	↗↗	double switch
△△△△	4 gang socket	↗↗↗	three pole switch
△	single spur	↗↗↗↗	four pole switch
△	shaver socket	↗↗↗↗↗	two-way switch
□	cooker control	↗↗↗↗↗↗	pull-cord switch
□	cooker control	↗↗↗↗↗↗↗	time operated switch
□	transformer	↗↗↗↗↗↗↗↗	dimmer switch
□	distribution board	●	push button switch
□	isolator	○	single light
□	terminal to earth	○	spot light
Y	lightning protection	○	flood light
Ⓜ	radio	—	fluorescent light
Ⓜ	television	⊕	emergency light
Ⓜ	private service tv	⊖	wall light
Ⓜ	cctv	⊕	light with pull-cord
Ⓜ	telephone	⊕	mains operated smoke alarm
Ⓜ	modem	●	ceiling speakers
Ⓜ	fax		
Ⓜ	CAT 6 socket		
Ⓜ	extract fan		

Notes:  
 - Smoke alarms to be provided in each room.  
 - Extract to bathrooms / W.C's.  
 - Burglar alarm to be installed. Contact points on doors.



Hestestock LLP  
 Studio 10, Cliff Road Studios  
 Cliff Road, London NW19 9AN  
 tel +44 (0)20 7267 7676  
 info@hestestock.com  
 www.hestestock.com

**Client:**  
 Mr. D. Brooks

**Job Title:**  
 60 Delancey Street

**Drawing Title:**  
 Lighting & Small Power - Ground Floor Plan

**Job/Drawings/Rev:** 1153 P1301 A

Drawn:	Checked:	Appr:	Date:
JVB	GS	DG	21.09.2018

**Drawing status:** Planning  
 Do not scale from this drawing. Check all dimensions on site before ordering.  
**Scale:** 1:100@A3