

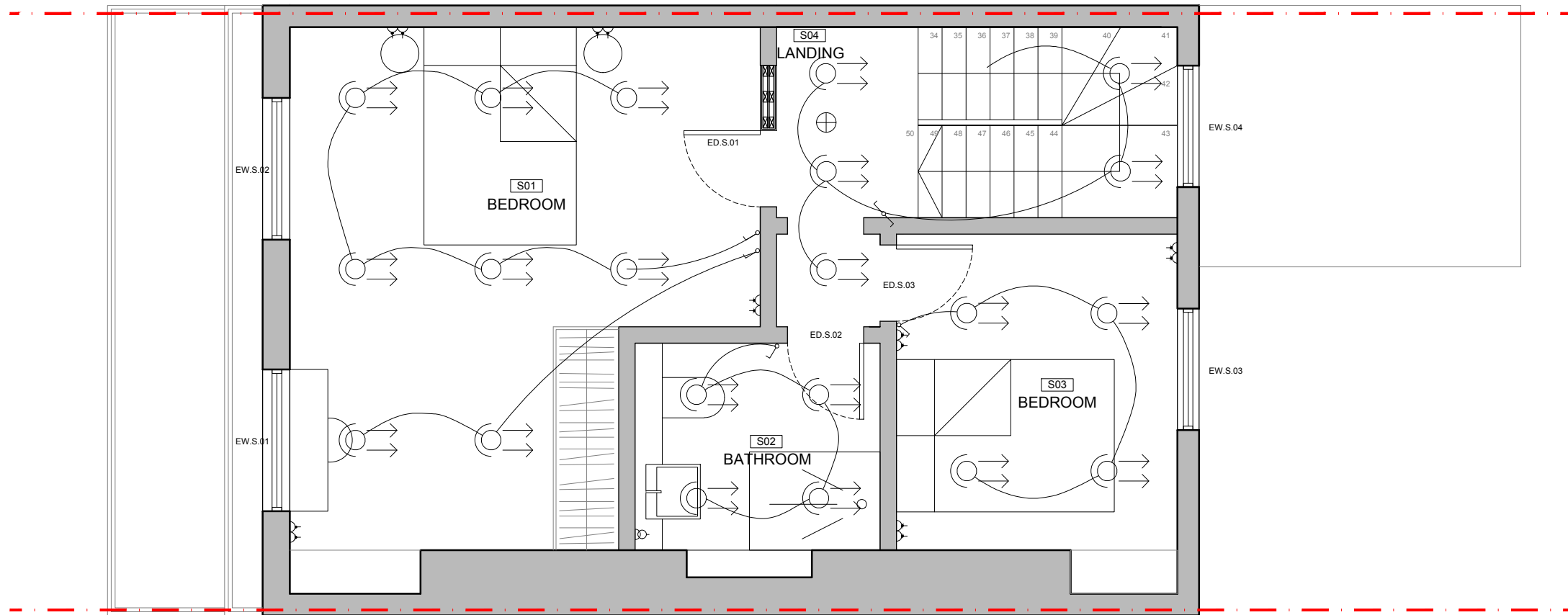
Rev.	Date	By	Check	Appr.	Description
-	22.10.20	JV	GS	GS	Retrospective Planning issue.
A	04.11.20	JV	GS	GS	Updated to client comments.

Key

△	single socket	↗	single switch
△△	double socket	↖↗	double switch
△△△	4 gang socket	↖↗↘↙	three pole switch
△	single spur	↖↗↘↙	four pole switch
△	shaver socket	↖↗↘↙	two-way switch
□	cooker control	↖↗↘↙	pull-cord switch
□	cooker control	↖↗↘↙	time operated switch
□	transformer	○	single light
□	distribution board	○	spot light
□	isolator	○	floor light
□	terminal to earth	○	fluorescent light
⚡	lightning protection	⊕	emergency light
Ⓜ	radio	○	wall light
Ⓜ	television	○	light with pull-cord
Ⓜ	private service tv	⊕	mains operated smoke alarm
Ⓜ	cctv	●	ceiling speakers
Ⓜ	telephone		
Ⓜ	modem		
Ⓜ	fax		
Ⓜ	CAT 6 socket		
Ⓜ	extract fan		

Notes:

- Smoke alarms to be provided in each room.
- Extract to bathrooms / W.C's.
- Burglar alarm to be installed. Contact points on doors.



Hestonstock LLP
 Studio 10, Cliff Road Studios
 Cliff Road, London NW19 9AN
 Tel: +44 (0)20 7267 7676
 info@hestonstock.com
 www.hestonstock.com

Client:
 Mr. D. Brooks

Job Title:
 60 Delancey Street

Drawing Title:
 Lighting & Small Power - Second Floor Plan

Job/Drawings/Rev:
 1153 P1303 A

Drawn:	Checked:	APP:	Date:
JVB	GS	DG	21.09.2018

Drawing status: Planning
 Do not scale from this drawing. Check all dimensions on site before ordering.
Scale: 1:100@A3