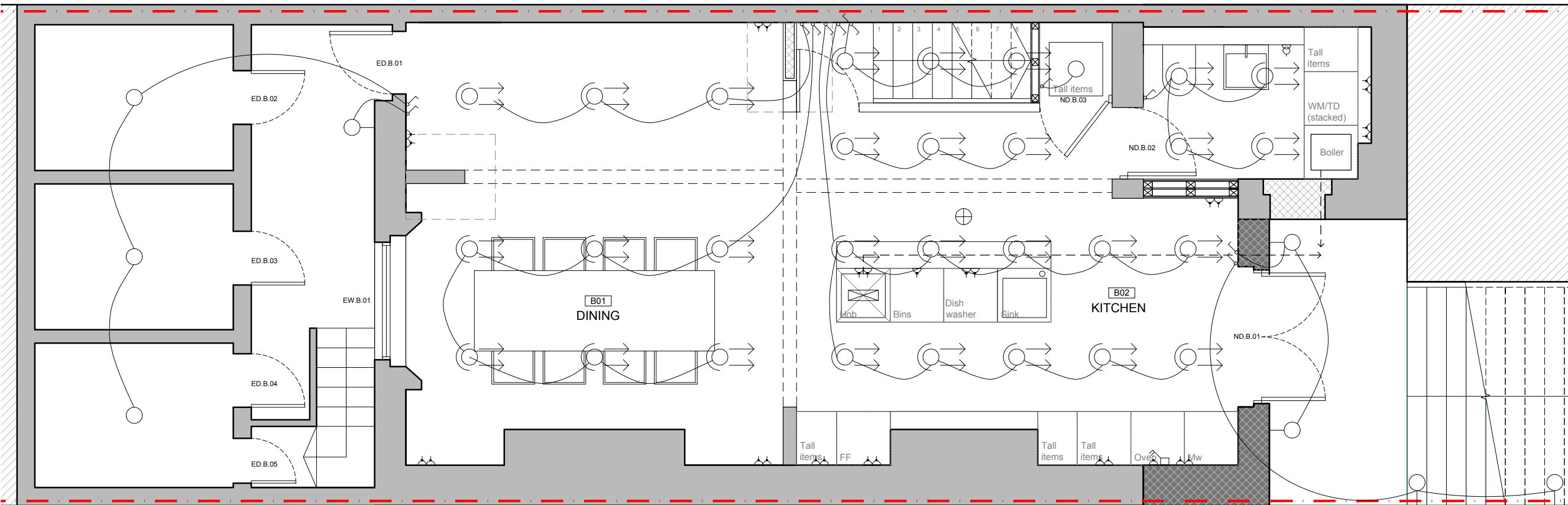


Rev.	Date	By	Check	Appr.	Description
-	22.10.20	JV	GS	GS	Retrospective Planning issue.
A	04.11.20	JV	GS	GS	Updated to client comments.

Key

△	single socket	↗	single switch
△△	double socket	↘	double switch
△△△	4 gang socket	↖	three pole switch
△△△△	single spur	↗↘	four pole switch
△△△△△	shaver socket	↖↗	two-way switch
△△△△△△	cooker control	↖↗↘	pull-cord switch
□	cooker control	↖↗↘↙	time operated switch
□□	transformer	↖↗↘↙↕	dimmer switch
□□□	distribution board	●	push button switch
□□□□	isolator	○	single light
□□□□□	terminal to earth	○	spot light
□□□□□□	lightning protection	○	flood light
□□□□□□□	radio	—	fluorescent light
□□□□□□□□	television	⊕	emergency light
□□□□□□□□□	private service tv	⊖	wall light
□□□□□□□□□□	cctv	⊕	light with pull-cord
□□□□□□□□□□□	telephone	⊕	mains operated smoke alarm
□□□□□□□□□□□□	modem	●	ceiling speakers
□□□□□□□□□□□□□	fax		
□□□□□□□□□□□□□□	CAT 6 socket		
□□□□□□□□□□□□□□□	extract fan		

Notes:  
 - Smoke alarms to be provided in each room.  
 - Extract to bathrooms / W.C's.  
 - Burglar alarm to be installed. Contact points on doors.



Hestonstock LLP  
 Studio 10, Cliff Road, Studios  
 Cliff Road, London NW19 9AN  
 Tel: +44 (0)20 7267 7676  
 info@hestonstock.com  
 www.hestonstock.com

**Client:**  
 Mr. D. Brooks

**Job Title:**  
 60 Delancey Street

**Drawing Title:**  
 Lighting & Small Power - Basement Floor Plan

**Job/Drawings/Rev:** 1153 P1300 A

Drawn:	Checked:	APP:	Date:
JVB	GS	DG	21.09.2018

**Drawing status:** Planning  
 Do not scale from this drawing. Check all dimensions on site before ordering.  
**Scale:** 1:100@A3