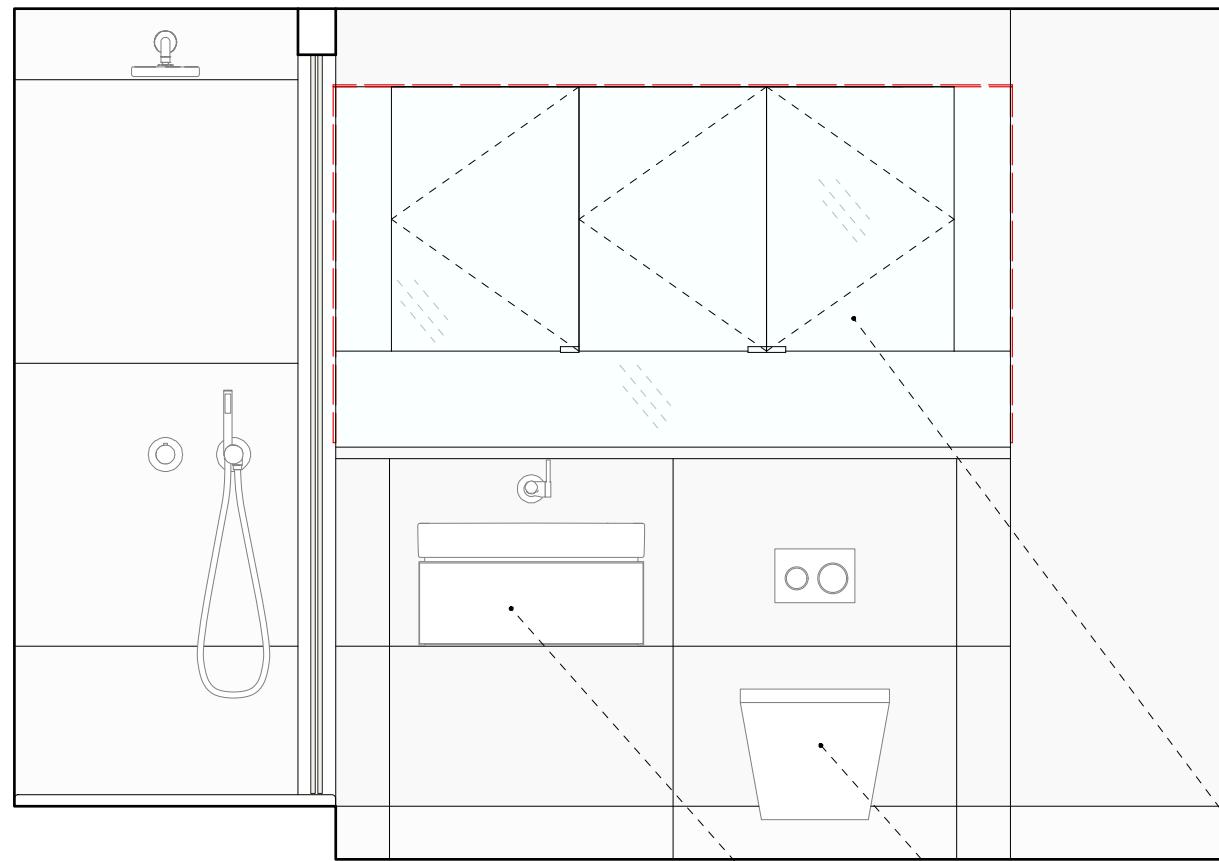


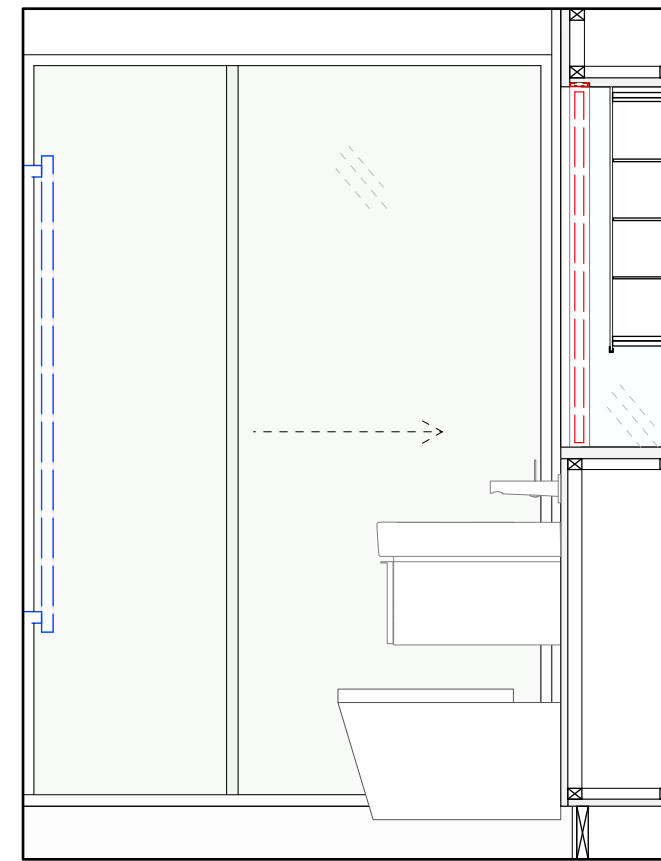
General Notes
 Do not scale from this drawing
 All dimensions to be verified on site
 To be read in conjunction with all relevant documents
 In the event of discrepancy notify the Architect immediately
 This document is copyright of Hugh Cullum Architects Ltd

Issue Status

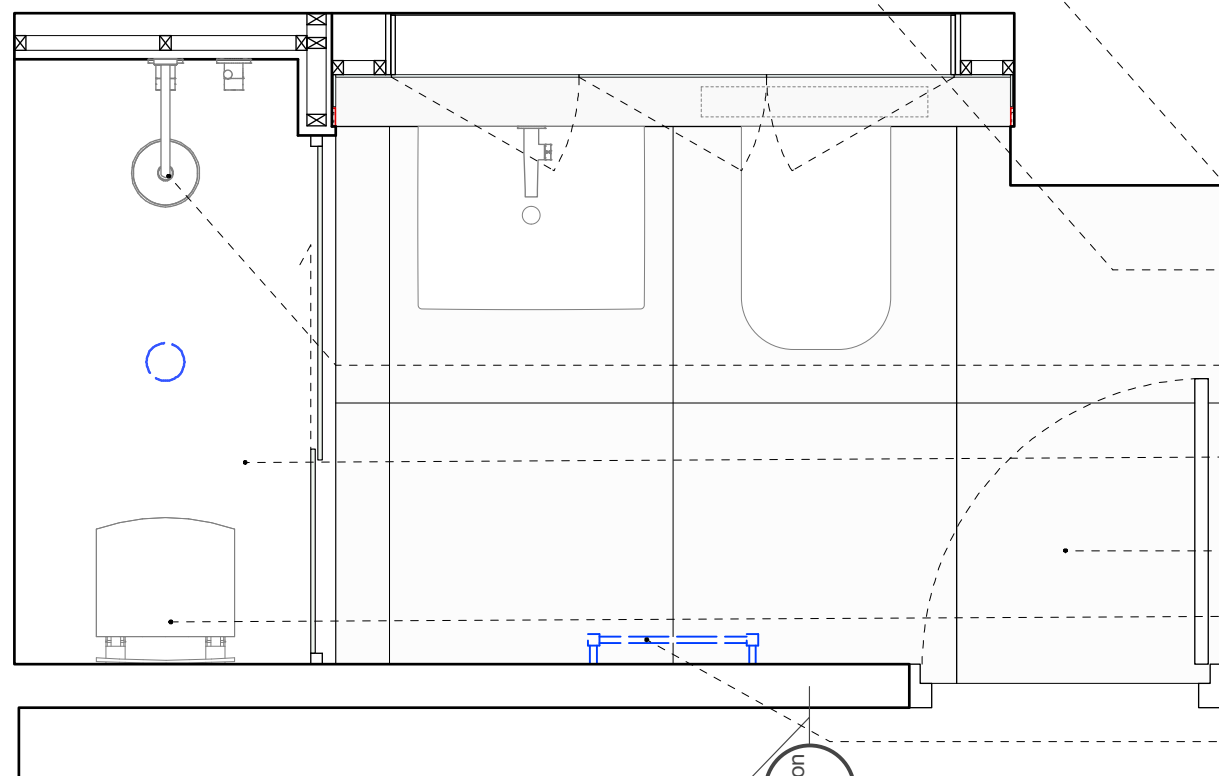
SK	Sketch	E	Existing Condition
D	Design	P	Permissions
T	Tender	C	Contract



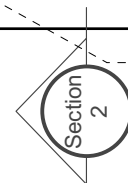
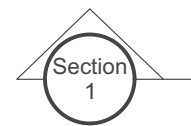
SECTION 1



SECTION 2



PLAN



- Joinery cabinet panelling in Corian to be similar in style to existing; mirrored recess with linear LED side and top lights and shallow mirror faced Royal Modular 2.0 cupboard by Keuco above
- Geberit Aquaclean Mera Classic wall-mounted pan
- Geberit iCon washbasin with Geberit iCon cabinet with one drawer; Keuco lxmo single lever basin mixer
- Keuco lxmo shower head, thermostatic mixer, diverter valve, shower hose and round pencil hand shower
- Gemini steam shower with glazed sliding door and fixed glazed side panel
- White large format floor and wall porcelain tiles
- Keuco wall mounted tip-up seat
- Zehnder Subway electric towel radiator



Proposed_Second Floor Bathroom

(): Issued for Planning

23.10.20 /TS/TS)

Please refer to sample board submitted with this application for proposed finishes.

HUGH CULLUM ARCHITECTS LTD
 Bloomsbury Design
 61b Judd Street
 London WC1H 9QT
 t 020 7383 7647
 f 020 7387 7645
 mail@hughcullum.com

10 Grand Union Walk
 Proposed
 Second Floor Bathroom
 1:20@A3 Oct 2020
 Drawn: TS Checked: TS
GUW10-P142()