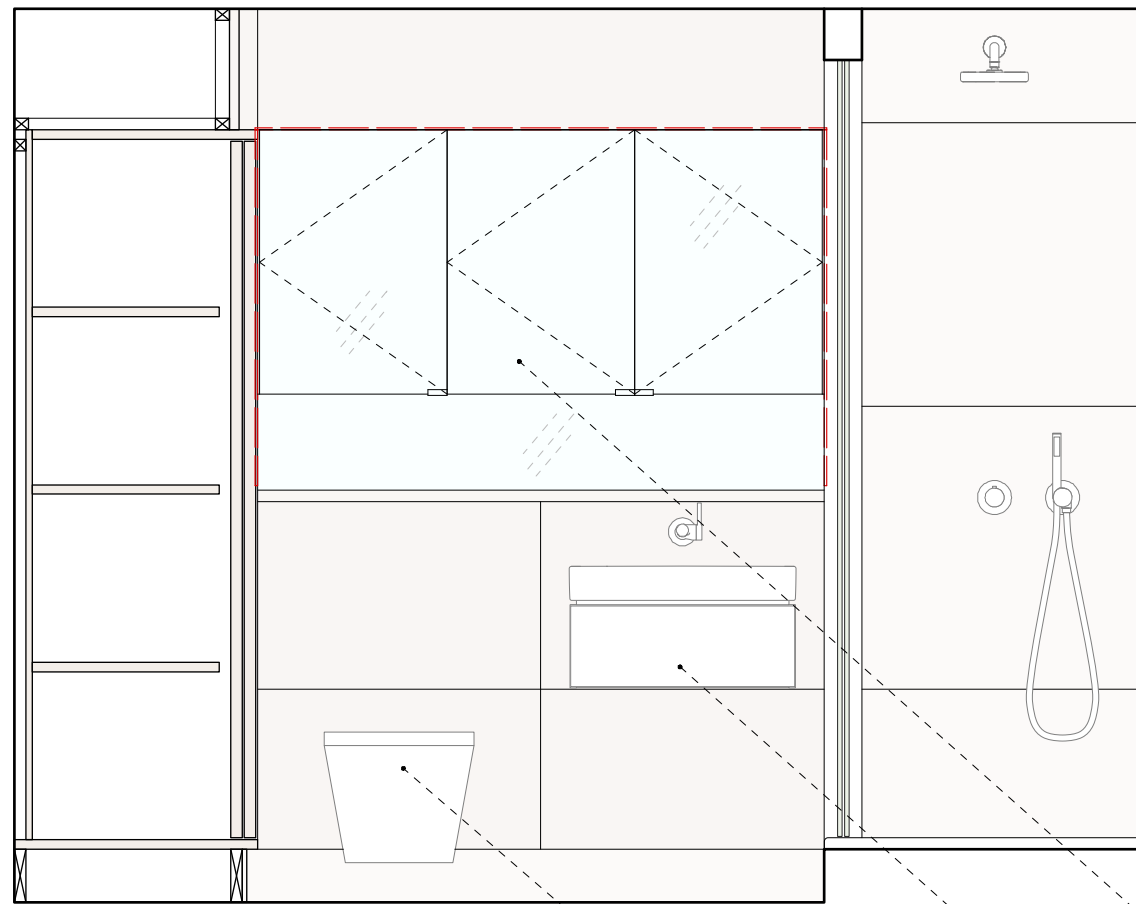
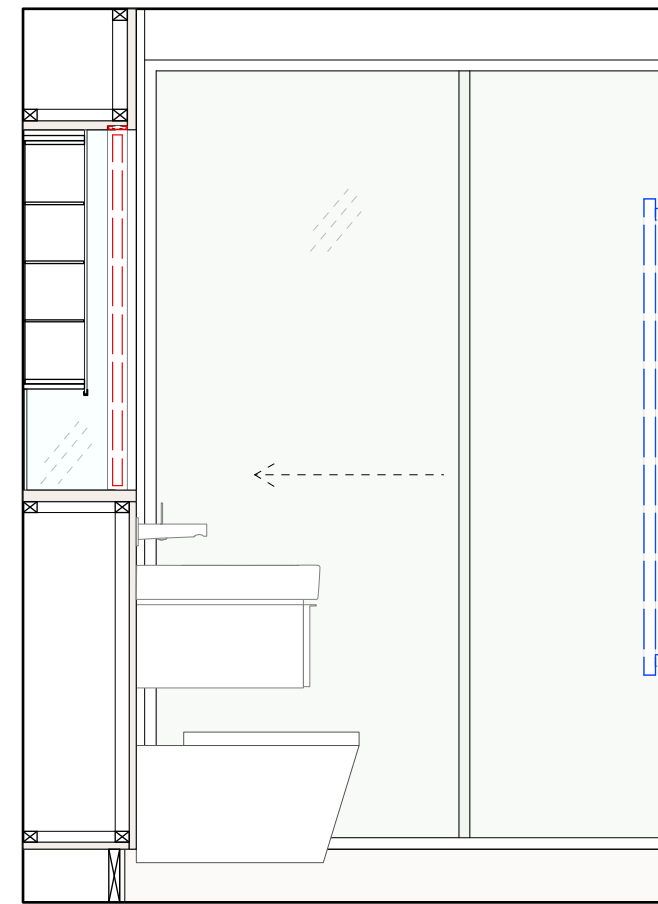


General Notes
 Do not scale from this drawing
 All dimensions to be verified on site
 To be read in conjunction with all relevant documents
 In the event of discrepancy notify the Architect immediately
 This document is copyright of Hugh Cullum Architects Ltd

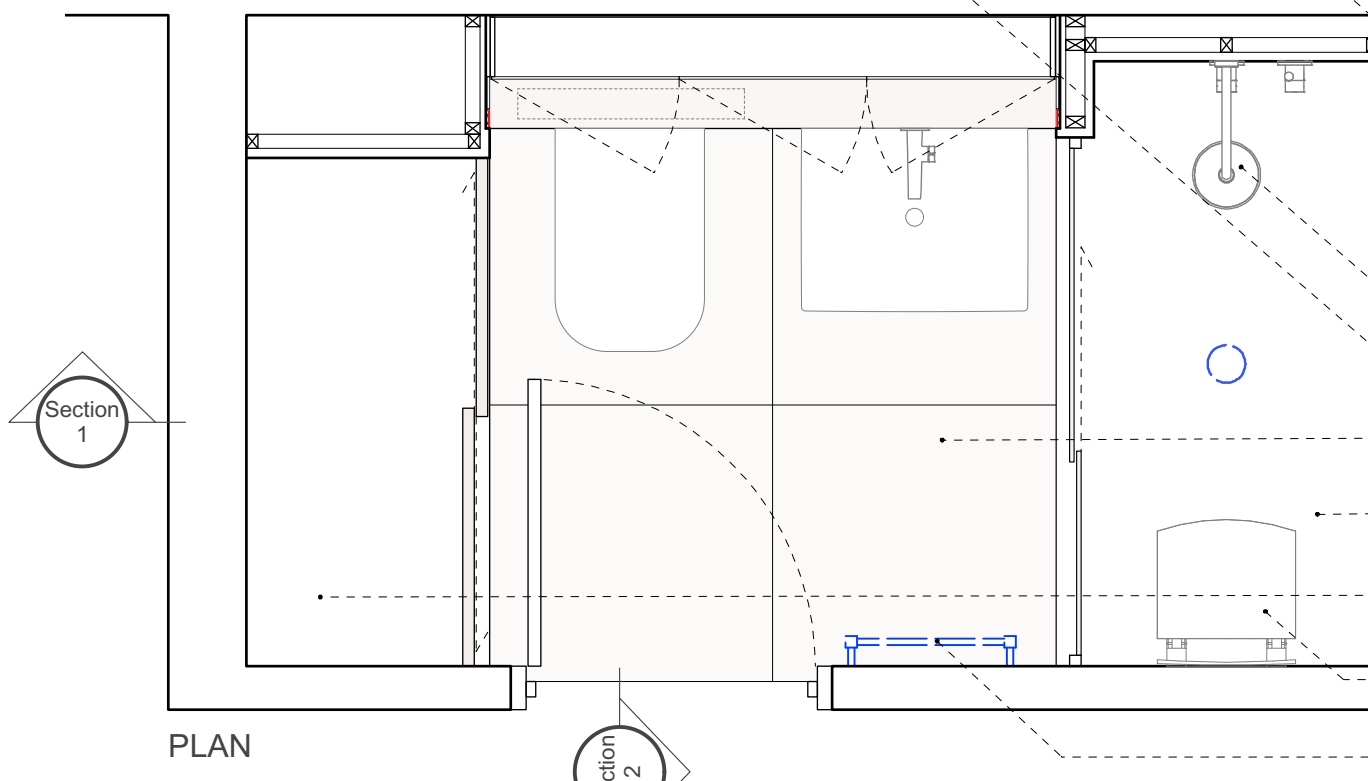
Issue Status
 SK Sketch E Existing Condition
 D Design P Permissions
 T Tender C Contract



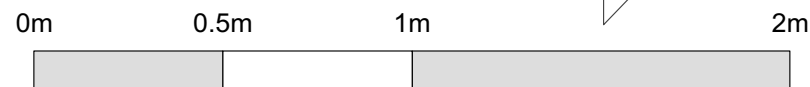
SECTION 1



SECTION 2



PLAN



Proposed_Ground Floor Bathroom

- Joinery cabinet panelling in Corian to be similar in style to existing; mirrored recess with linear LED side and top lights and shallow mirror faced Royal Modular 2.0 cupboard by Keuco above
- Geberit iCon washbasin with Geberit iCon cabinet with one drawer; Keuco lxmo single lever basin mixer
- Keuco lxmo shower head, thermostatic mixer, diverter valve, shower hose and round pencil hand shower
- Geberit Aquaclean Mera Classic wall-mounted pan
- Off-white large format floor and wall porcelain tiles
- Gemini steam shower with glazed sliding door and fixed glazed side panel
- Joinery cabinet with sliding doors, similar in style to existing
- Keuco wall mounted tip-up seat
- Zehnder Subway electric towel radiator

Please refer to sample board submitted with this application for proposed finishes.

(): Issued for Planning

23.10.20 /TS/TS

HUGH CULLUM
 ARCHITECTS LTD
 Bloomsbury Design
 61b Judd Street
 London WC1H 9QT
 t 020 7383 7647
 f 020 7387 7645
 mail@hughcullum.com

10 Grand Union Walk
 Proposed
 Ground Floor Bathroom
 1:20@A3 Oct 2020
 Drawn: TS Checked: TS
GUW10-P141()