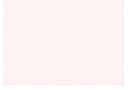



**General Notes**  
 Do not scale from this drawing  
 All dimensions to be verified on site  
 To be read in conjunction with all relevant documents  
 In the event of discrepancy notify the Architect immediately  
 This document is copyright of Hugh Cullum Architects Ltd

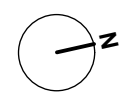
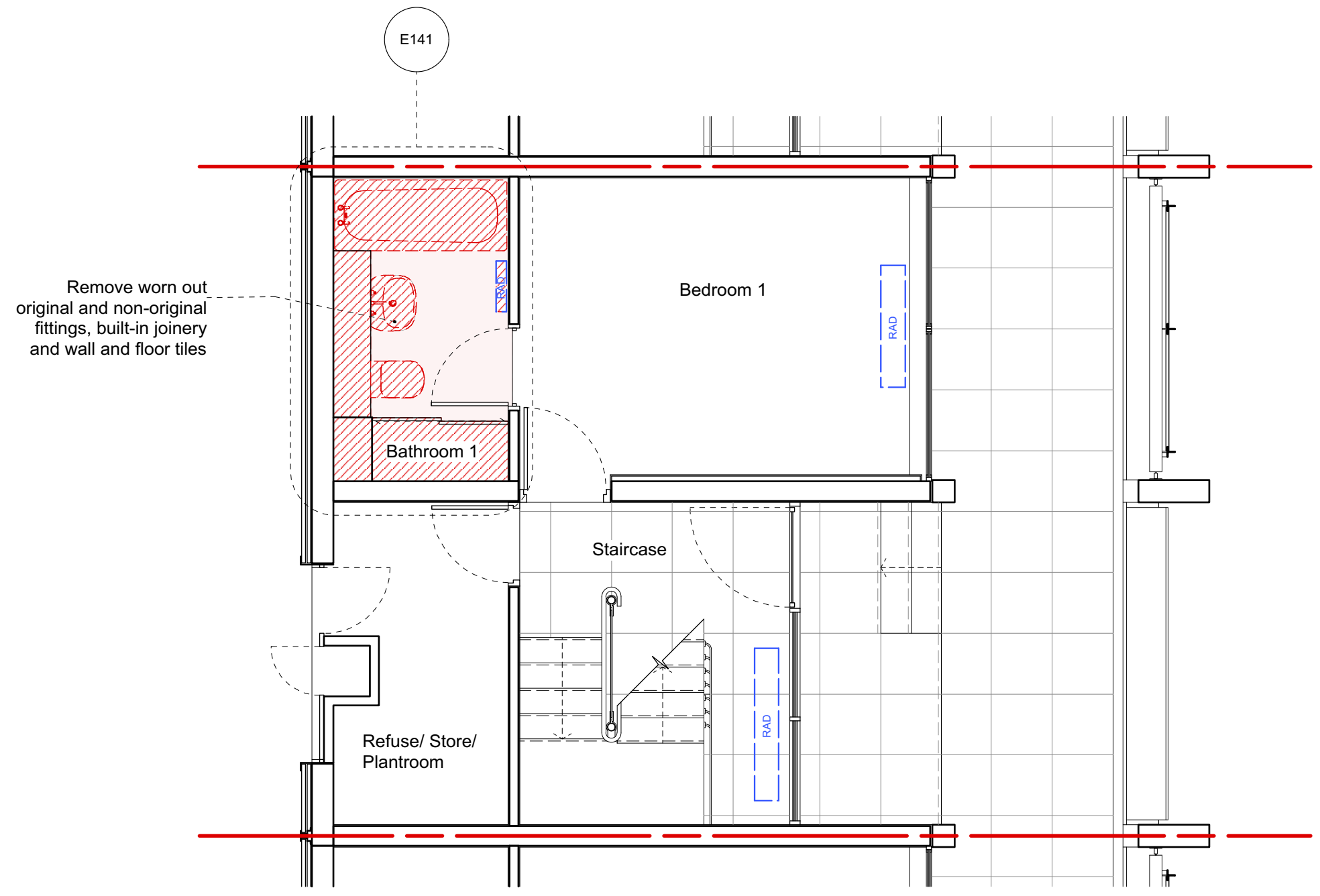
**Issue Status**

SK	Sketch	E	Existing Condition
D	Design	P	Permissions
T	Tender	C	Contract

( ): Issued for Planning 23.10.20 /TS/TS)

 Indicates surfaces to be demolished

 Indicates fixtures to be demolished



**As Existing\_Ground Floor Plan**

**HUGH CULLUM ARCHITECTS LTD**  
 Bloomsbury Design  
 61b Judd Street  
 London WC1H 9QT  
 t 020 7383 7647  
 f 020 7387 7645  
 mail@hughcullum.com

**10 Grand Union Walk**  
 As Existing  
 Ground Floor Plan  
 1:50@A3 Oct 2020  
 Drawn: TS Checked: TS  
**GUW10-E110( )**