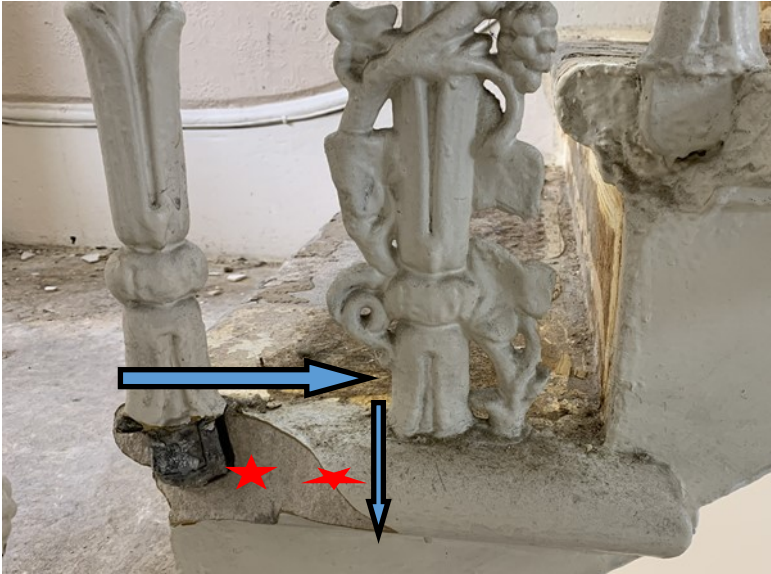


METHOD STATEMENT FOR THE REPAIR OF THE MOULDED TREADS TO THE MAIN STAIRCASE.



This photograph shows the typical damage to the Portland stone tread of the cantilevered staircase. The damage has been caused by the base of the iron balustrade spalling and bursting the stone at its weakest point.

The proposed method repair would be for our skilled masons to carefully square cut the damaged areas along the lines shown by the blue arrows.

A new piece of Portland stone pre-cut off site to match the moulded leading edge and return of the tread will be fixed into position on stainless steel dowels. These dowels will be 6mm 304 grade stainless steel resin fixed into the existing tread as indicated on the photograph with a red star.

The new piece of stone will be fitted around the balustrade base and glued in position and pointed with fine lime putty mortar.

The balustrade will be resin fixed into the new stone indent and left ready for redecorations by others.

Repair of Landing stones :

Failed areas of the landing will have the damaged stone carefully lifted out of their existing position and a new solid lime mortar and sharp sand bed installed beneath. The fractured stone will then be pinned back in position using stainless steel dowels as described above.



The blue arrows indicate where the new stainless steel dowels will be inserted.



To the second floor landing the broken slab of York stone will be re-bedded as previously and have multiple pins inserted across the various cracks. The surface joints will be grouted with lime mortar.