

# London Borough of Camden

## Site Address

Agar Grove Development, Agar Grove NW1 9TB

Bus Stop CAM0124AB

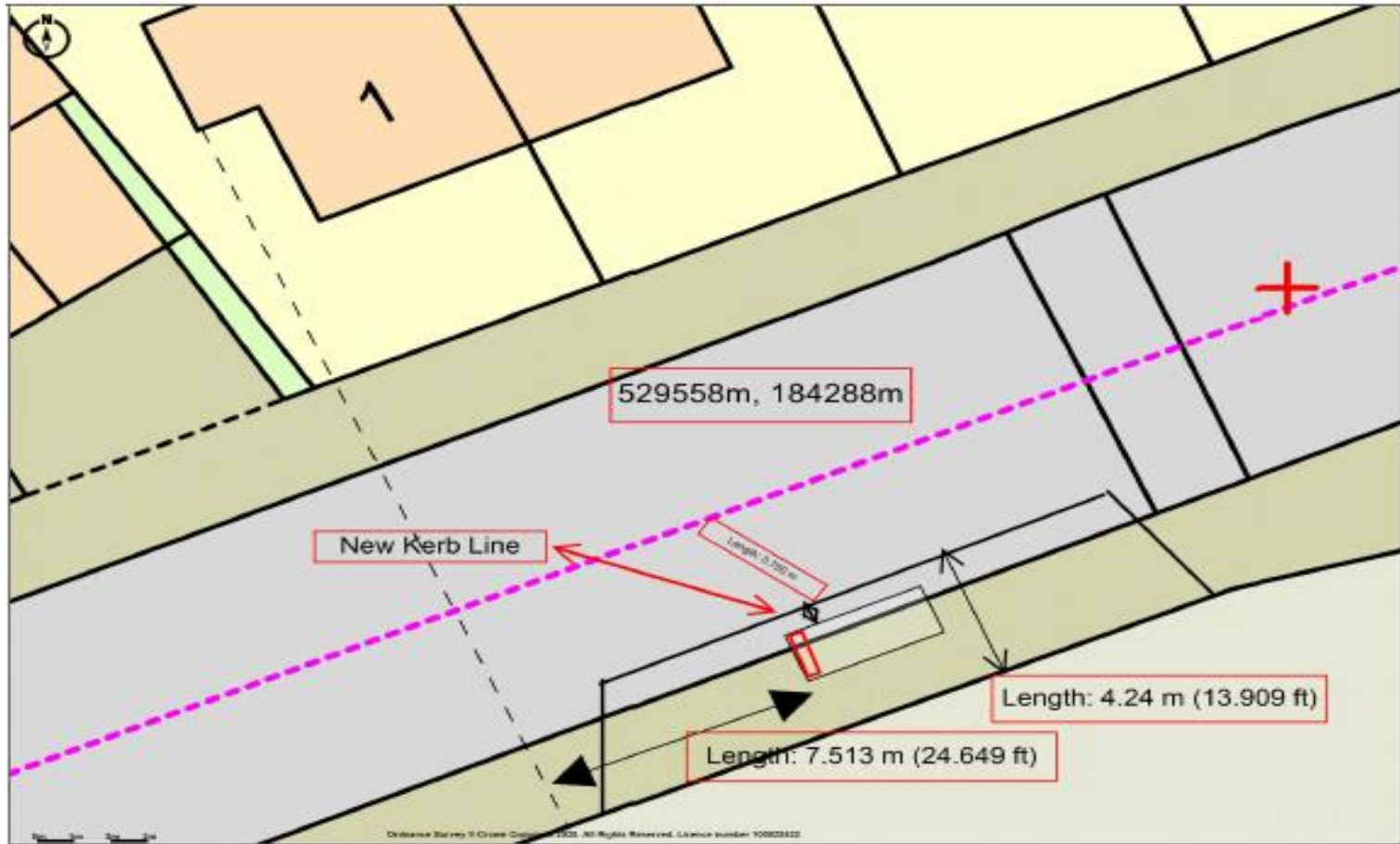




**Site Address**

Agar Grove Development, Agar Grove NW1 9TB

**Bus Stop CAM0124AB**



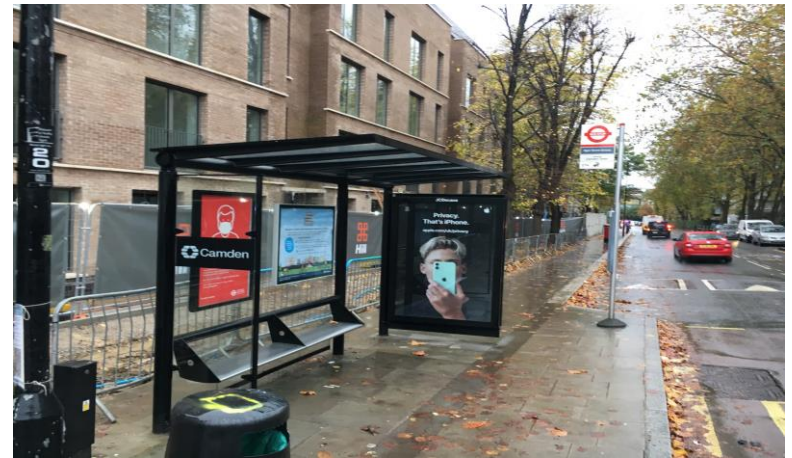
**Site Address**

Agar Grove Development, Agar Grove NW1 9TB

**Bus Stop CAM0124AB**



## Site Images



### Site Address

Agar Grove Development, Agar Grove NW1 9TB

Bus Stop CAM0124AB

Bus shelter: Design Norman Foster



Bus shelter: Design Norman Foster



## Bus shelter: Design Norman Foster

### Paper advertising to rear of digital screen

Edgelit LED display.

Standard 6 sheet poster display.

Unique and proven paper poster retention design.

### Double sided paper advertising

x4 LED tubes

Scrolling versions are also available.

Visible screen area: 1066mm x 1095mm.

### Lighting

Provided by a LED array located in the shelter roof.

Low power consumption 9W.

Excellent levels of illumination within the shelter.

Lighting designed to be easily visible when on to provide a safe and reassuring environment.

PIR sensor can be installed.

Solar variants exist.

### Electricity

Power supply

Single phase 220 V/240 V - 50 Hz

Can be fed via a feeder pillar or in certain scenarios all electrical gear can be housed in the touchscreen enclosure.

Standard Protection:

16A-32A circuit breaker.

25A-30mA RCD.



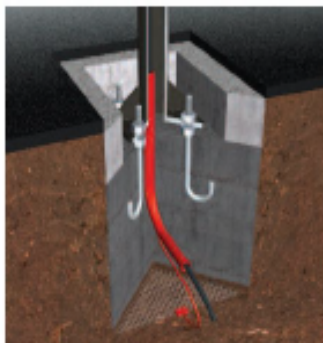
## Bus shelter: Design Norman Foster

### Foundation

Unit anchored on solid concrete fittings buried to conceal fasteners

Fitted with an electricity input duct and an earth grid

Calculated according to the region where it is installed



Foundation principle

### Standards

Design and manufacture certified ISO 9001 and ISO 14001.

### Environmental aspects

Electric and electronic equipment recycled according to WEEE regulations.

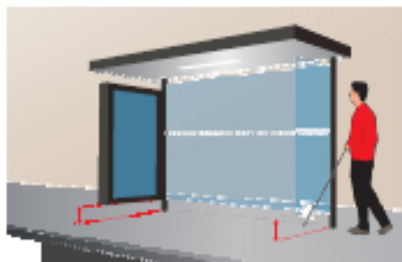
Furniture made from durable and recyclable materials.

Full product life cycle analysis available.

### Visibility

The lowest parts of the shelter no more than 20 cm from the ground so that it can be detected with a white cane.

Silk-screen printed warning bands on return glass are available to reduce risk of bumping into the glass.



### Resistance to vandalism

Anti-impact protection index > IK 10 (corresponding to the impact of a 2 kg metal ball falling one metre)

All doors and access hatches are unlocked by means of a special designed key.

Standard anti-vandal and JCDecaux specific fixings.

A special designed screw is used for the visible fastenings (glass brackets, lighting, etc.) to avoid malicious dismantling of the glazing.

In the event of it smashes the glass is designed to fragment into small pieces reducing the risk of injury. No visible cables or ducting.

Furniture made up of non-flammable materials

In sensitive areas, the rear glass panels may be replaced by walls in perforated sheet metal

