

New timber double glazed sash windows to replace existing metal/ aluminum windows to compliment conservation area, and adjacent properties.

New timber double glazed sash windows to replace existing metal/ aluminum windows to compliment conservation area, and adjacent properties



PROPOSED FRONT ELEVATION

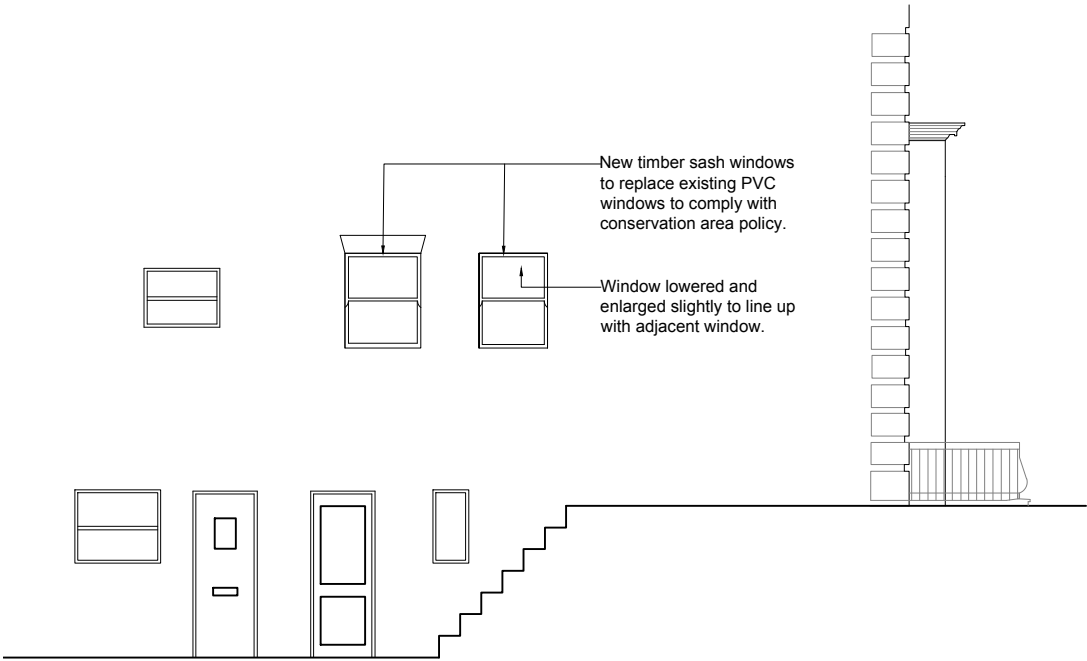
Existing red tiles removed and replaced with new tiles to compliment conservation area & match closely to adjacent properties

New front door to fit in with conservation areas and adjacent properties

New iron flat bar handrail

New timber sash windows to replace existing PVC windows to comply with conservation area policy.

Window lowered and enlarged slightly to line up with adjacent window.

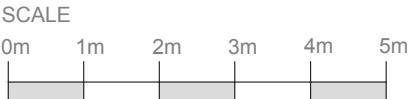


PROPOSED NORTH FACING ELEVATION



PROPOSED SOUTH FACING ELEVATION

New timber double glazed sash window to replace existing metal/ aluminum windows to compliment conservation area, and adjacent properties



This drawing is the property of Studio Lloyd Ltd. Copyright is reserved & this drawing is issued on the condition that it is not copied, reproduced, retained or disclosed to any unauthorised person, either wholly or in part, without our consent. Do not scale from this drawing, check all dimensions on site.

REV	DATE	NOTES
STUDIO LLOYD		
info@studiolloyd.co.uk www.studiolloyd.co.uk +44 (0) 7876756721		
CLIENT:		
PRIVATE CLIENT		
PROJECT:		
FLAT 3 - 60 WEST LANE		
DRAWING TITLE		
PROPOSED ELEVATIONS		
DRAWING STATUS		
FOR PLANNING APPROVAL		
DRAWN BY	CHECKED	SCALE 1:100@A3
DRAWING REFERENCE		
DATE:	PROJECT NO:	DRAWING NO:
30.08.2020	04_WL	04_WL-05
REVISION:		
A		