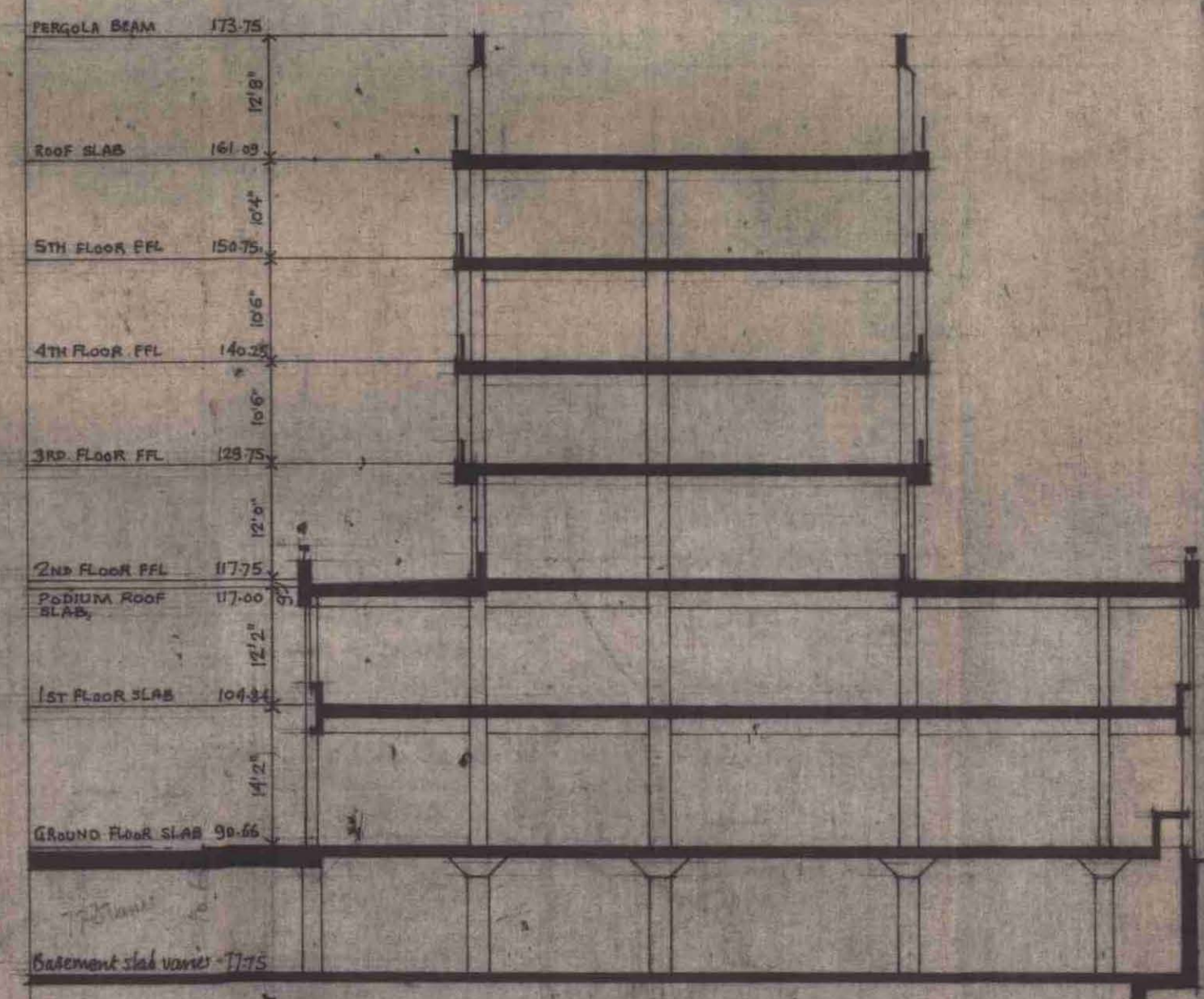
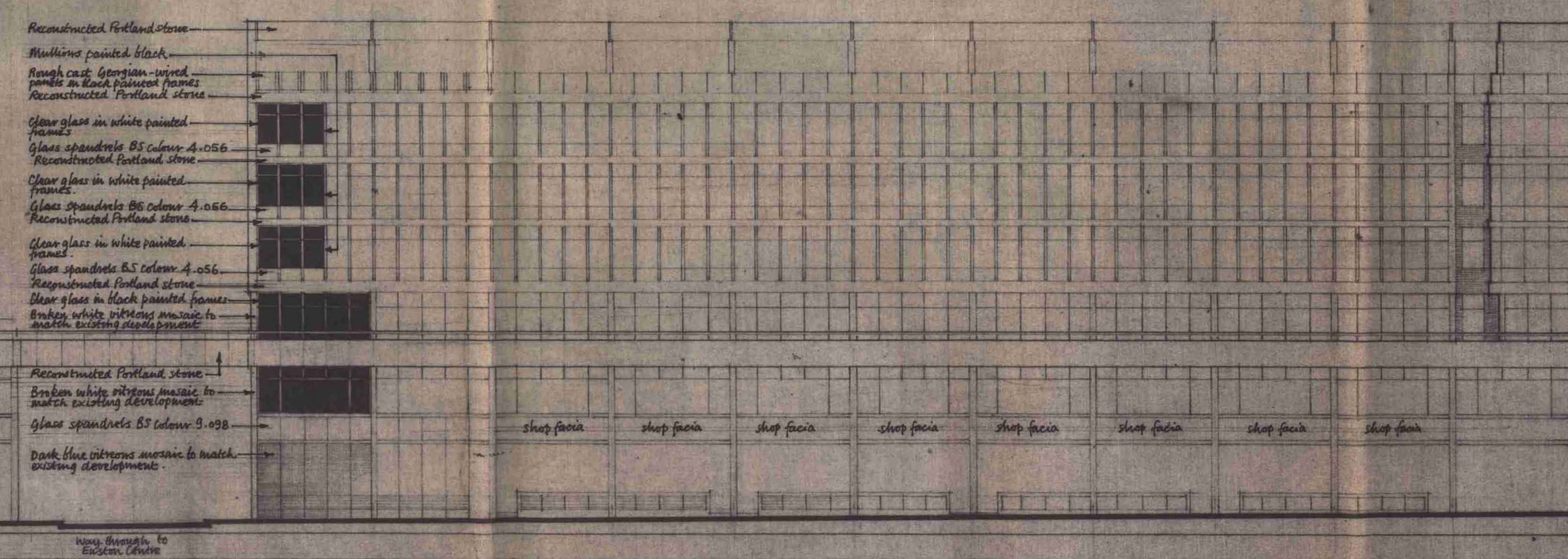


Trafalgar Square Way-through under Block E Way-through into Drummond Street Hampstead Road

SOUTH ELEVATION OF BLOCK "C"



MATERIALS AND COLOURS GENERALLY  
As indicated and defined, details of which are set out below, are the same as those used on Blocks E and F already completed.



- Reconstructed Portland stone
- Mullions painted black
- Rough cast Georgian-wired panes in black painted frames
- Reconstructed Portland stone
- Clear glass in white painted frames
- Glass spandrels BS colour 4.056
- Reconstructed Portland stone
- Clear glass in white painted frames
- Glass spandrels BS colour 4.056
- Reconstructed Portland stone
- Clear glass in white painted frames
- Glass spandrels BS colour 4.056
- Reconstructed Portland stone
- Clear glass in black painted frames
- Dark blue vitreous mosaic to match existing development
- Reconstructed Portland stone
- Broken white vitreous mosaic to match existing development
- Glass spandrels BS colour 9.098
- Dark blue vitreous mosaic to match existing development

BLOCK "B" Development already completed NORTH ELEVATION OF BLOCK "C"

CTP/m12/4x/A/10/85

T.P. DRAWING NOT TO BE REVISED

DATE REVISED	DETAIL OF REVISION	REVISION LETTER

**EUSTON CENTRE** BLOCK C

PROJECT: BLOCK C - SCHEME J\* SHOPS AND WAREHOUSE (REVISED) ELEVATION

SUBJECT: Sidney Kaye, Eric Firmin & Partners ARCHITECTS AND PLANNING CONSULTANTS THAVIES INN HOUSE, 5, HOLBORN CIRCUS, LONDON E.C.1. 01-583 8911

TAS 4 Feb. 1971

1 inch = 16 feet

**C.82**