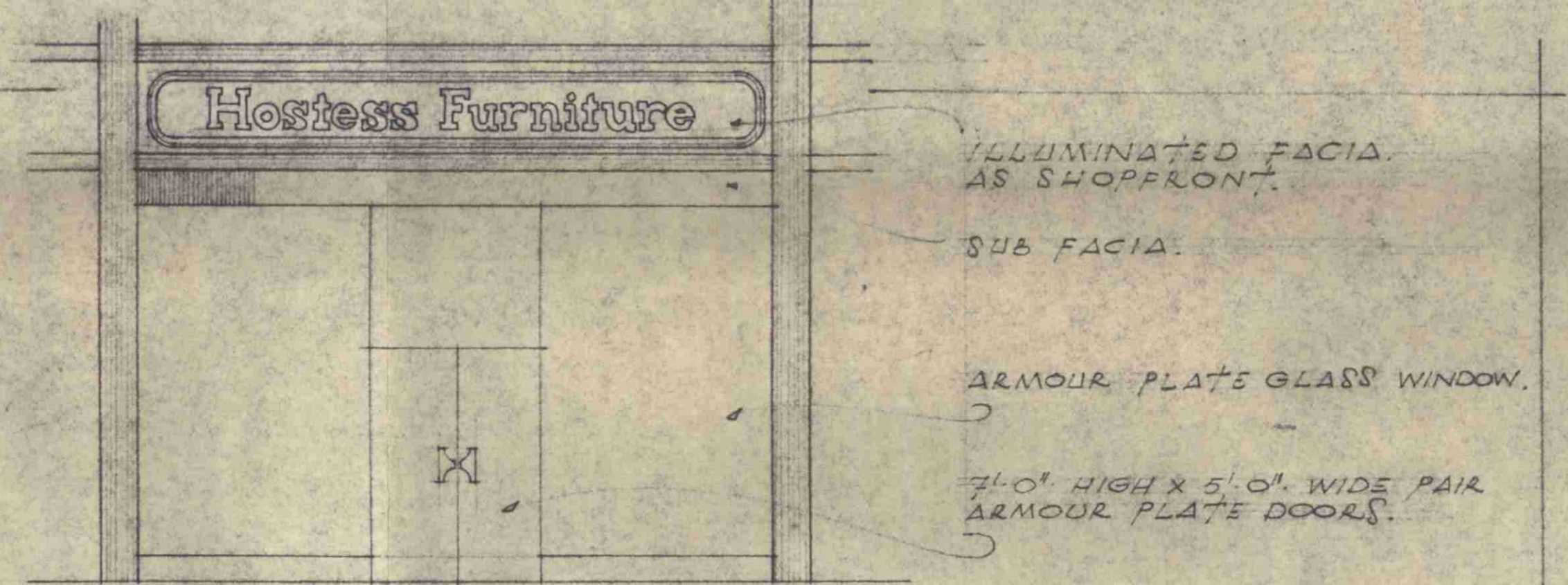
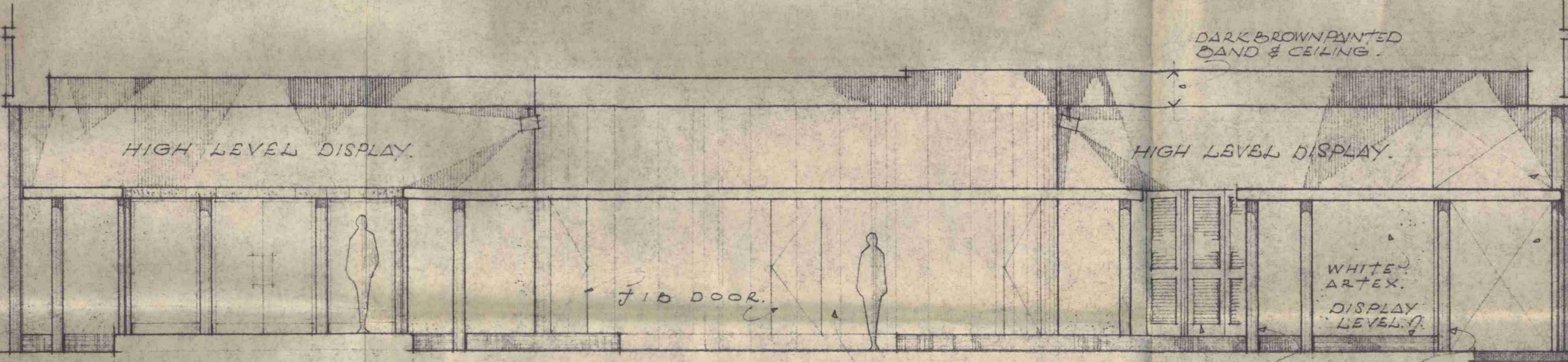
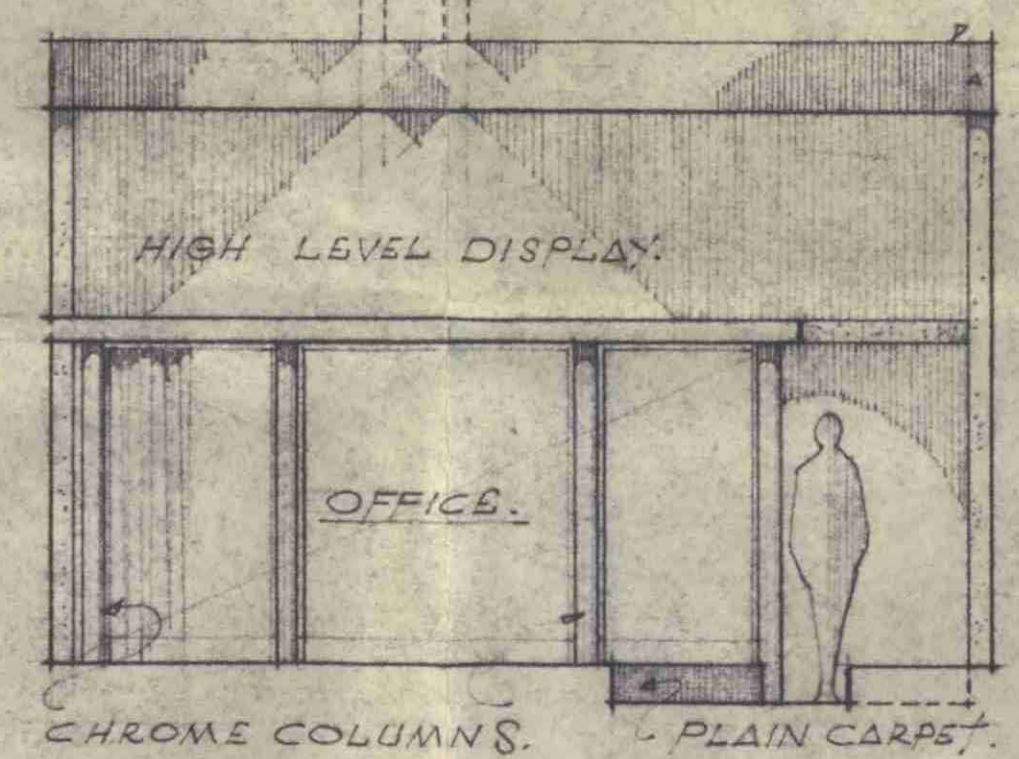


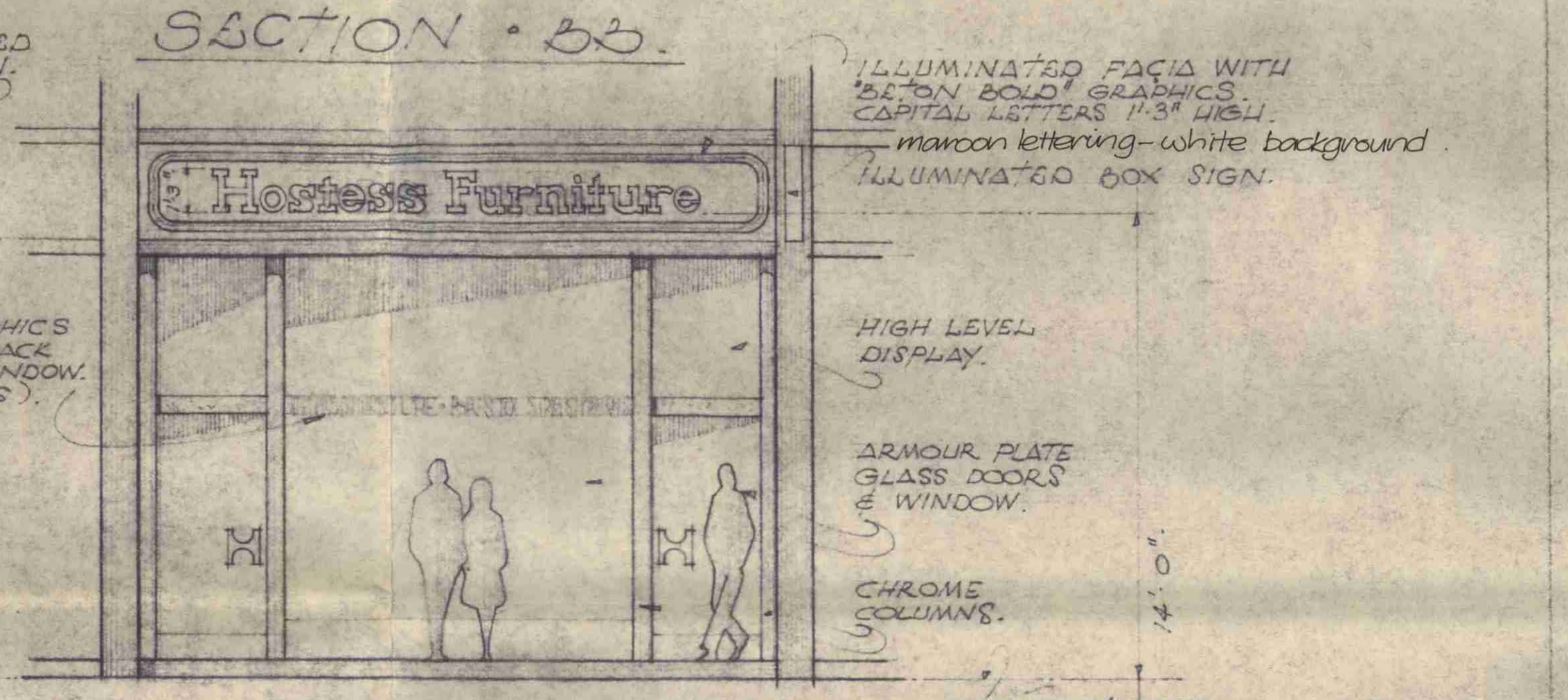
PLAN - HIGH LEVEL.



SHOP REAR ENTRANCE FROM SERVICE ROAD.



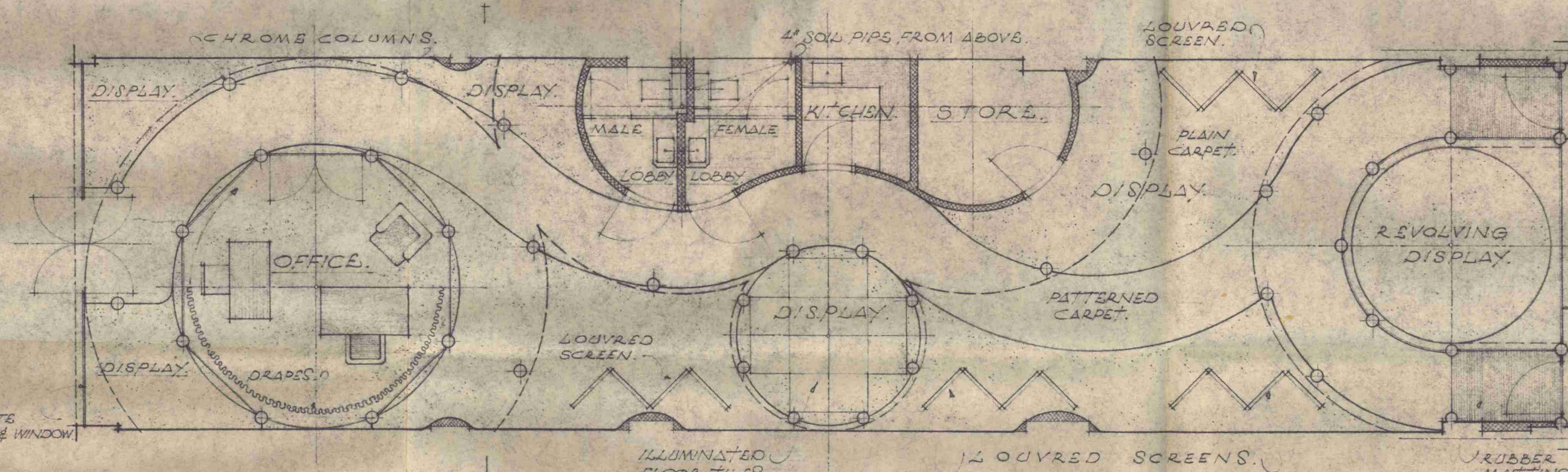
SECTION - AA.



SECTION - BB.

SHOPFRONT (HAMPSHIRE ROAD)

* KITCHEN & TOILET LOBBYS TO BE MECHANICALLY VENTILATED, 3 AIR CHANGES PER HOUR. FANS WIRED TO LIGHT SWITCHES.



1/4\"/>

- LIGHTING KEY.**
- F.A. DOWNLIGHTER.
 - UPLIGHTER.
 - DIR. SPOT.
 - ▣ DIR. TRACK FITTING.
 - ▣ OPAU PERSPEX FITTING.
 - ▣ DIFFUSED STRIPLIGHT.
 - ▣ ARCH. STRIP.
- DISPLAY LIGHTING TO BE ON 3 SEP. DIMMER CONTROLS. ALLOW FOR 3RD. DOUBLE 13 AMP SOCKET OUTLETS.

LONDON BOROUGH OF CAMDEN
APPROVED
PLANS
-6 FEB 1973
ON BEHALF OF THE COUNCIL

GARNETT, GLOUSHER, REMORE & ASSOCIATES
ARCHITECTS AND DESIGN CONSULTANTS
28 Queen Anne's Gate, London, S.W.1 6SQ-6222

406-888 FURNITURE
68, BEATTY HOUSE, LONDON, N.W.1.
PLAN & ELEVATIONS
SHOP & SHOPFRONT.

1/4\"/>

M12 11x 11 15476