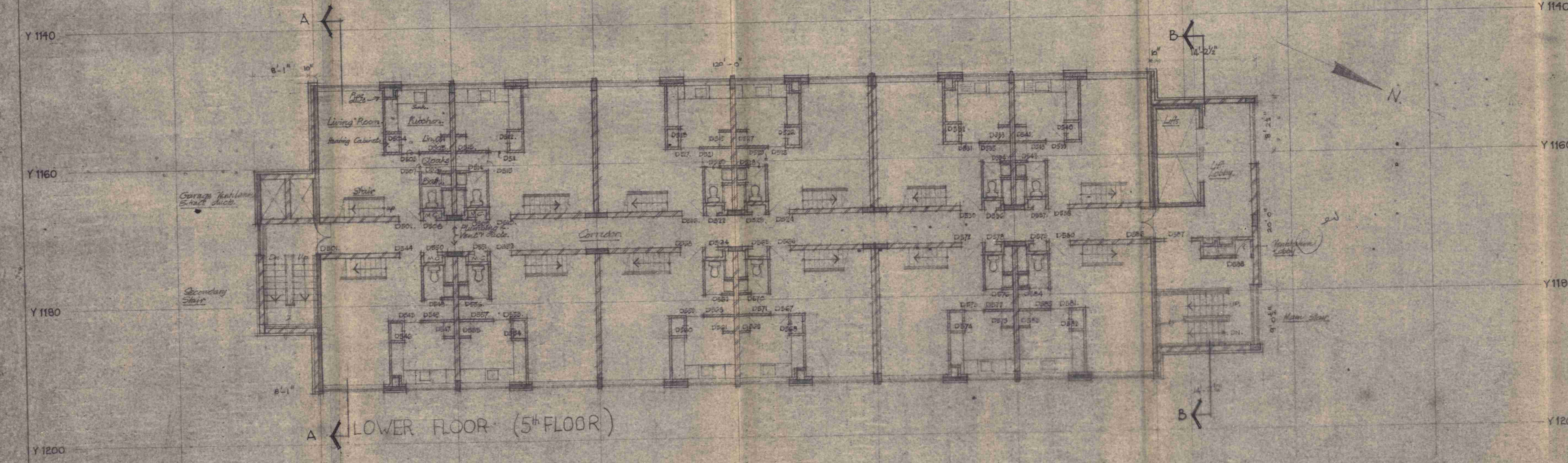


UPPER FLOOR (6<sup>th</sup> FLOOR)

- a. NO DIMENSION IS TO BE SCALED FROM THIS DRAWING.
- b. THIS COPY OF THIS DRAWING SUPERSEDES ALL PREVIOUS ISSUED DRAWINGS RELATING TO THE SAME ITEM OF WORK.
- c. THIS DRAWING IS TO BE COMPARED WITH ALL OTHER DRAWINGS RELATING TO THE WORK INCLUDING DRAWINGS BY SUB-CONTRACTORS & SPECIALISTS. ANY DISCREPANCY IS TO BE REPORTED TO THE ARCHITECTS BEFORE ANY WORK IS COMMENCED.
- d. THE LIMIT OF WORK TO WHICH THIS DRAWING REFERS WILL BE SHOWN WHERE NECESSARY BY A LINE DRAWN THERE.

21 NOVEMBER 68	ELEC. RISER MOVED FROM LIFTS TO NEAR REFUSE CHUTE. REFUSE CHUTE REPOSITIONED.	A
JAN 14 69	BLINDS IN LIT. INCREASED. DUCTS IN GARAGE STAIRS CORRECTED. EXPANSION JOINT ADDED.	B
JAN 20 69	SWAP J. L. T. IN CORRIDOR. CORRIDOR STAIRS ADDED.	C
FEB 5 69	DOOR NUMBERS ADDED.	D



LOWER FLOOR (5<sup>th</sup> FLOOR)

CTP/M12/14x/A/6727

TOWN PLANNING SET  
February 1969.

DATE REVISED    DETAIL BY REVISION    REVISION LETTER

**EUSTON CENTRE** BLOCK **B**

PROJECT  
MAISONNETTES 5<sup>th</sup> & 6<sup>th</sup> FLOORS

ARCHITECT  
**Sidney Kaye, Eric Firmin & Partners**  
ARCHITECTS AND PLANNING CONSULTANTS  
TRAVIES INN HOUSE 5, HOLBORN CIRCUS LONDON EC1 01-583-8811

1.B    3/1/68

1/8" to 1'-0"

**BS5**